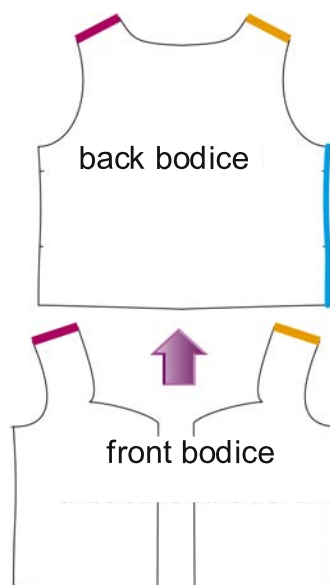


4.

Pin right sides together:

- the shoulders of the back and front bodices
- the sides of the back and front bodices

Iron the seams apart.

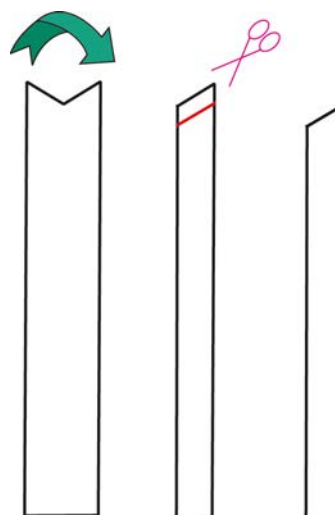


Here is a **video** that illustrates steps 5 to 11 on my youtube channel:

Iribole Couture: poser la bordure, la fermeture à glissière sur le corsage de patron couture Breizh

5.

Fold the front bodice band right sides together then sew the top 1 cm from the edge (**red line**). Turn it over and iron it.



6.

Interline the front and back borders if you have a soft fabric (twill, very light viscose...).

Cut out the interfacing with the border pattern in the straight line.

On the ironing board lay your piece of fabric upside down towards you.

Position the piece of interfacing previously cut on the corresponding piece of fabric with the glue side against the back side of the fabric. No pinning.

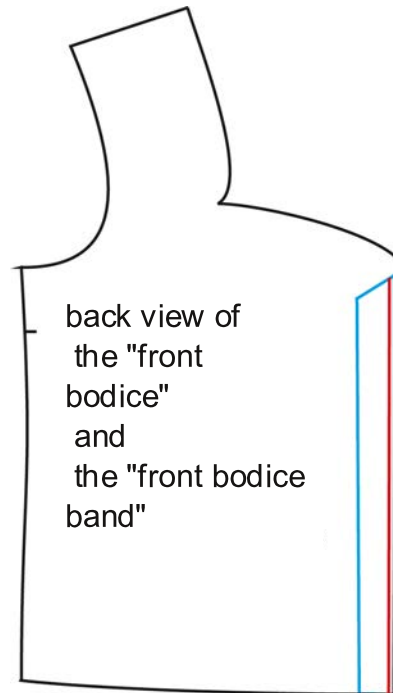
Slowly apply the hot iron without ironing on the interfacing and the fabric.

Move the iron as you go by lifting it. Don't stay too long at each iron pose.

7.

Pin the "front bodice band" to the wrong side of the "front bodice" (it doesn't matter which side of the bodice is up to you. However if you are using buttons or snaps, be aware that the buttons will not line up in the middle of the bodice).

Stitch 0.5 cm from the edge. (red line)



If you want to put buttons with buttonholes or press studs, go to step 9 and only put the buttons or press studs at the very end of your work. page 28

8.

If you are installing a zipper, you can choose an invisible or a pretty, well-visible, non-separable one.

You can take a separable zipper if you sew the top alone with the bodice that opens.

You are going to lay it face down against the wrong side of the fabric.

When it is put on, you will have the impression that it is badly put on, but that is because the finish is missing!

laying steps:

- Change the foot of your sewing machine by installing a special machine foot with invisible zipper or not depending on the zipper you have chosen.
- Open the zipper.
- Pin one side of the zipper with one side of the bodice wrong sides together
- You match the top of the zipper (small pieces of plastic or metal) to 1 cm from the top of the bodice. The remaining cm will be folded down when assembling the border.

- Stitch flush with the teeth of the invisible zipper. But not too much, otherwise you won't be able to close your bodice). Same for visible closures.

- Close the zipper.

- Pin the second side of the zipper wrong sides together with the other side of the bodice.

Make sure that the marks of the two front bodice pieces coincide face to face.

Feel free to hand stitch to hold the zipper in place before stitching.

- Open the zipper then sew.

- Close the zipper and finish stitching the bottom of each of the zipper pieces

Be careful, if you sew a separable closure, it's almost the same except that you can fully open.

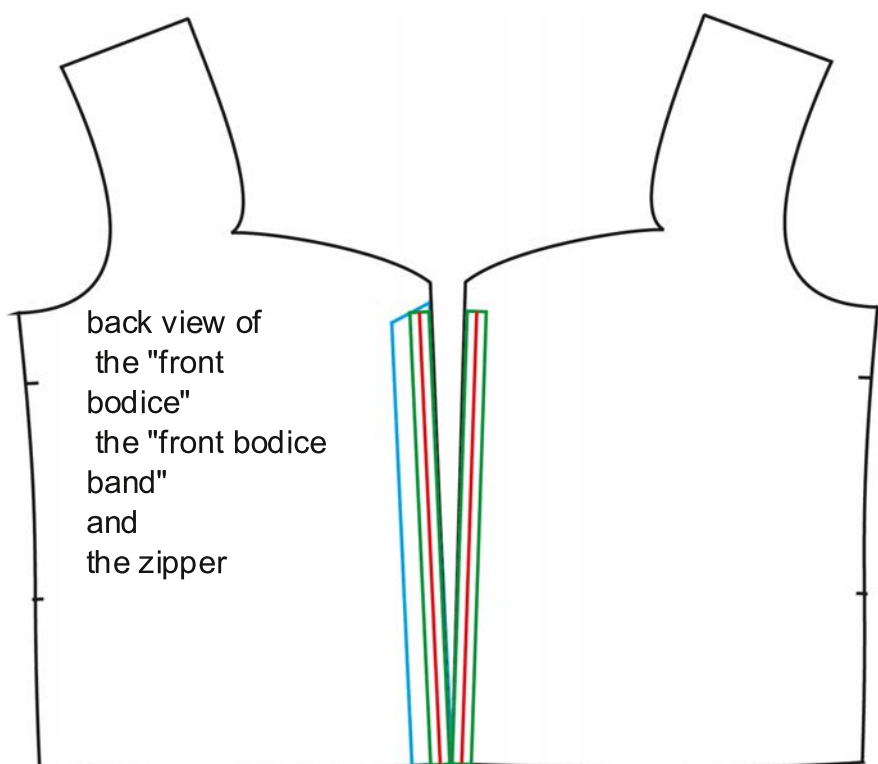
Diagram:

black: the bodice face up visible

blue: the front bodice band

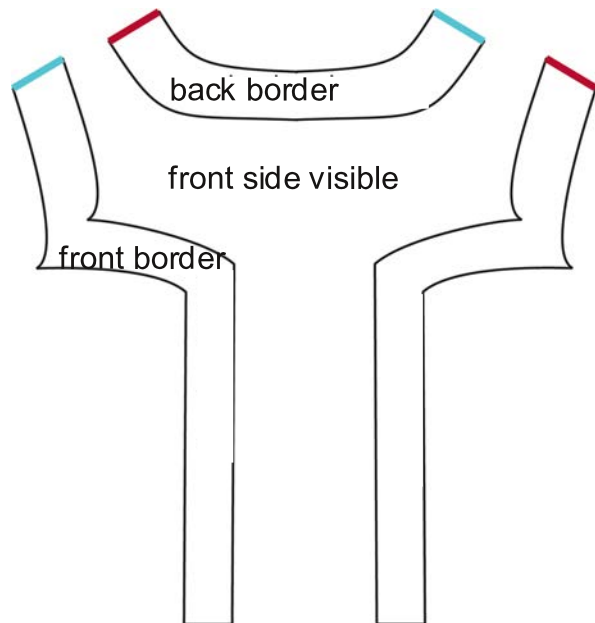
green: the zipper

red: the stitching to do to install the zipper



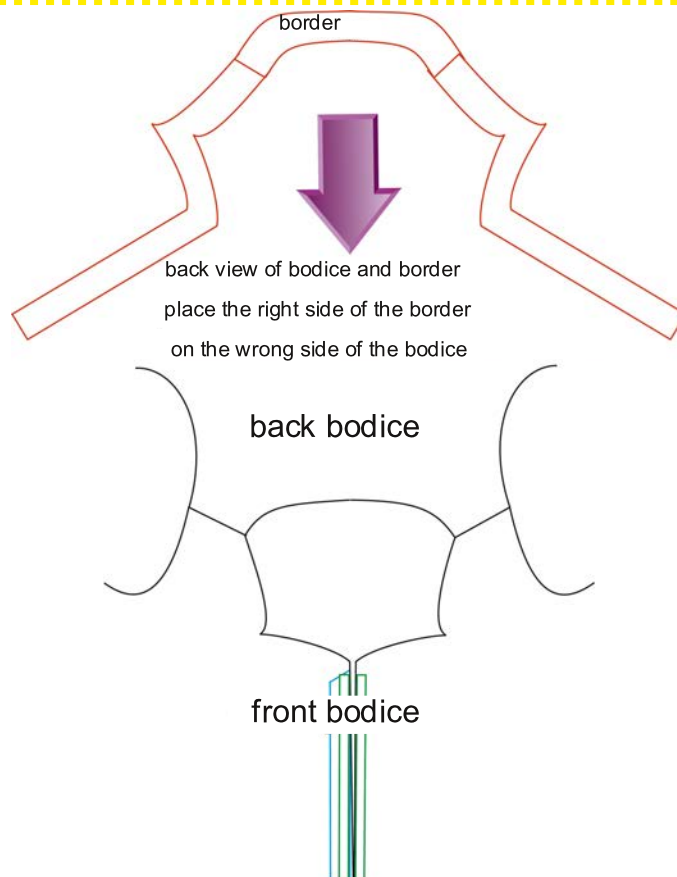
9.

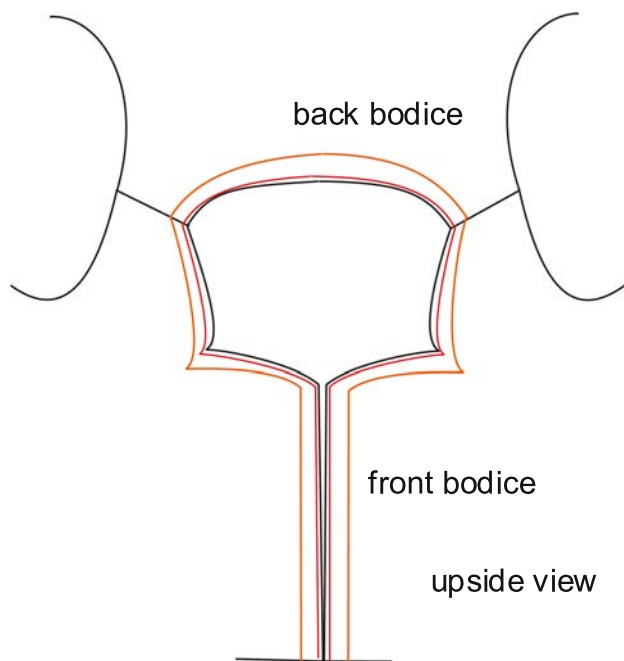
Pin the front border to the sides of the back border.
Iron the seams apart.



10.

Pin the border thus created to the bodice.
you pin it right side against the wrong side of the bodice... Yes yes, you read that right!
Sew, notch then fold the border entirely on the place.





orange: border

red: seam before binding on the right side

11.

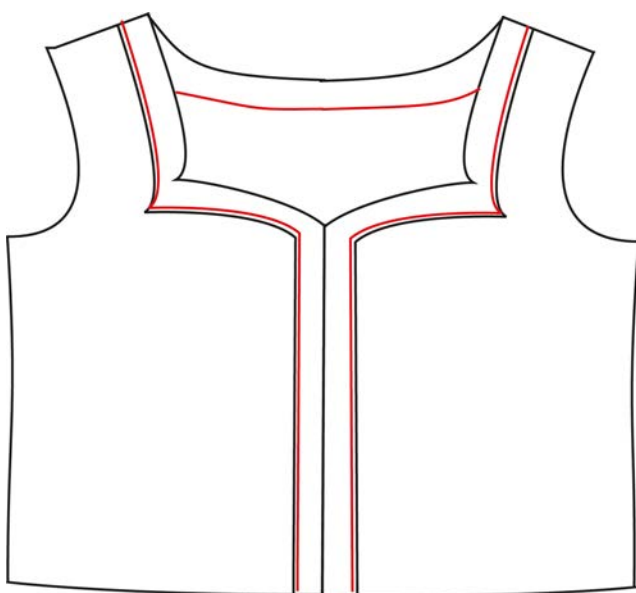
If you don't feel like creating a fill on the border, you can roll the entire border of the loose edge then sew, near the rolled edge, on the right side, the border to the bodice.

There is also the possibility of overcasting the border and laying a lace or other joy to hide the overcast.

Either way, remember to pin the border to the bodice before stitching.

Otherwise, pre-iron a 1cm fill all around the border.

Pin it to the bodice then stitch close to the edge of the border.



red: stitching on the outer edge of the border