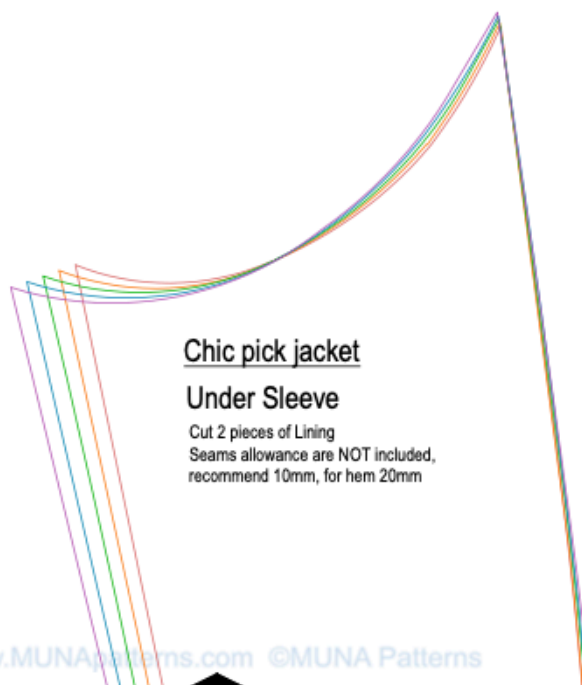


8



### Chic pick jacket

#### Under Sleeve

Cut 2 pieces of Lining  
Seams allowance are NOT included,  
recommend 10mm, for hem 20mm

www.MUNApatterns.com ©MUNA Patterns

9

### Chic pick jacket

#### Back

Cut 2 pieces of Main fabric and Interfacing  
Seams allowance are NOT included,  
recommend 10-13mm, for hem 40mm

### Chic Pick veste

#### Pièce de dos

Couper x2 du tissu principal et en thermocollant  
Marge de couture NON incluse,  
recommande 10-13mm, ourlet 40mm

www.MUNApatterns.com ©MUNA Patterns

### Chic pick jacket

#### Front

Cut 2 pieces of Main fabric and Interfacing  
Seams allowance are NOT included,  
recommend 10-13mm, for hem 40mm

### Chic Pick veste

#### Devant

Couper x2 du tissu principal et en thermocollant  
Marge de couture NON incluse,  
recommande 10-13mm, ourlet 40mm

www.MUNApatterns.com ©MUNA Patterns

10