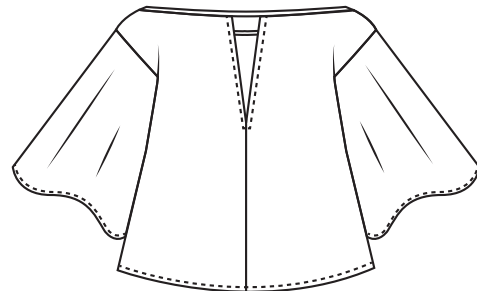
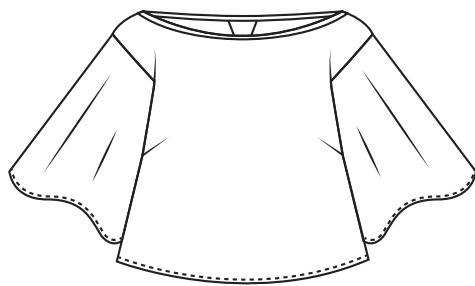


audax*
*** stella

TOP MARNIE

Size 38 to 52

Sewing Instructions
Level: it is not my first project



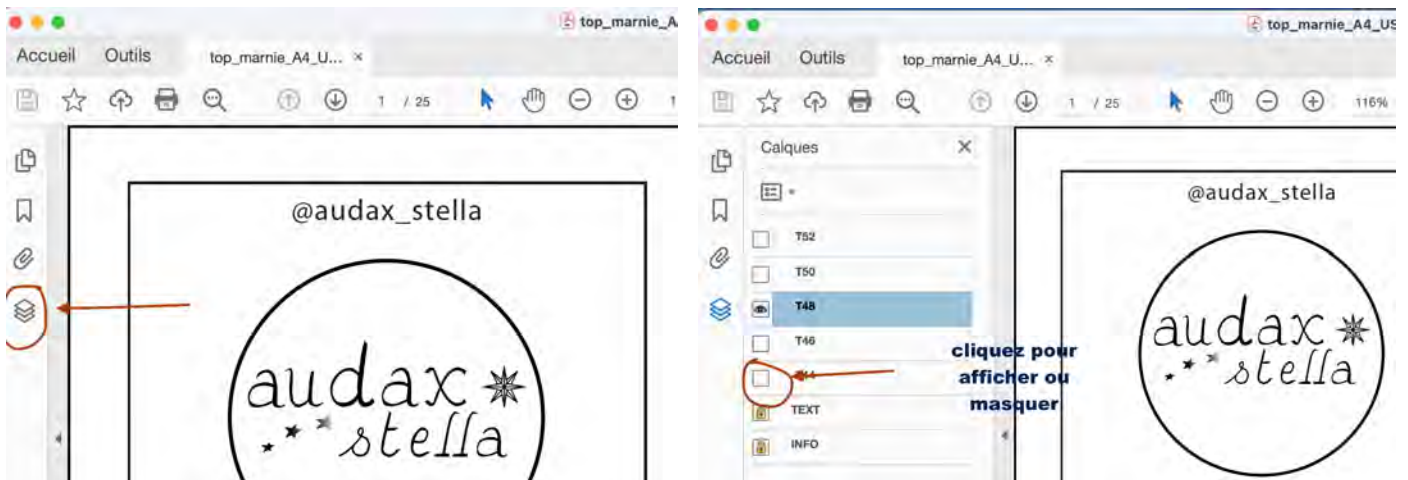
Marnie is a loose and flowing crop-top, with short sleeves, boat neckline and a V-shaped opening at the back.

It goes perfectly with the Marnie Skirt, it is easy to sew and can be lengthen and shorten according to your needs.

How to print a pdf pattern?

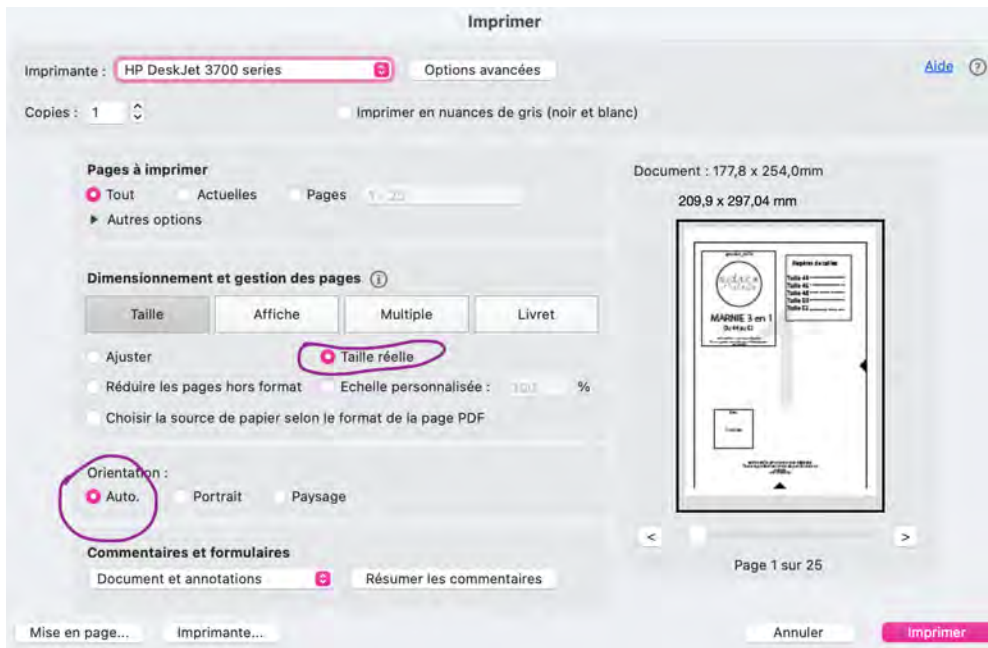
Etape 1. Save the file on your computer (printing directly from a browser induces several scale issues).
Open the file with Acrobat Reader.

Etape 2. Select the size(s) that you wish to print in the layers panel :



Etape 3. File > Print.

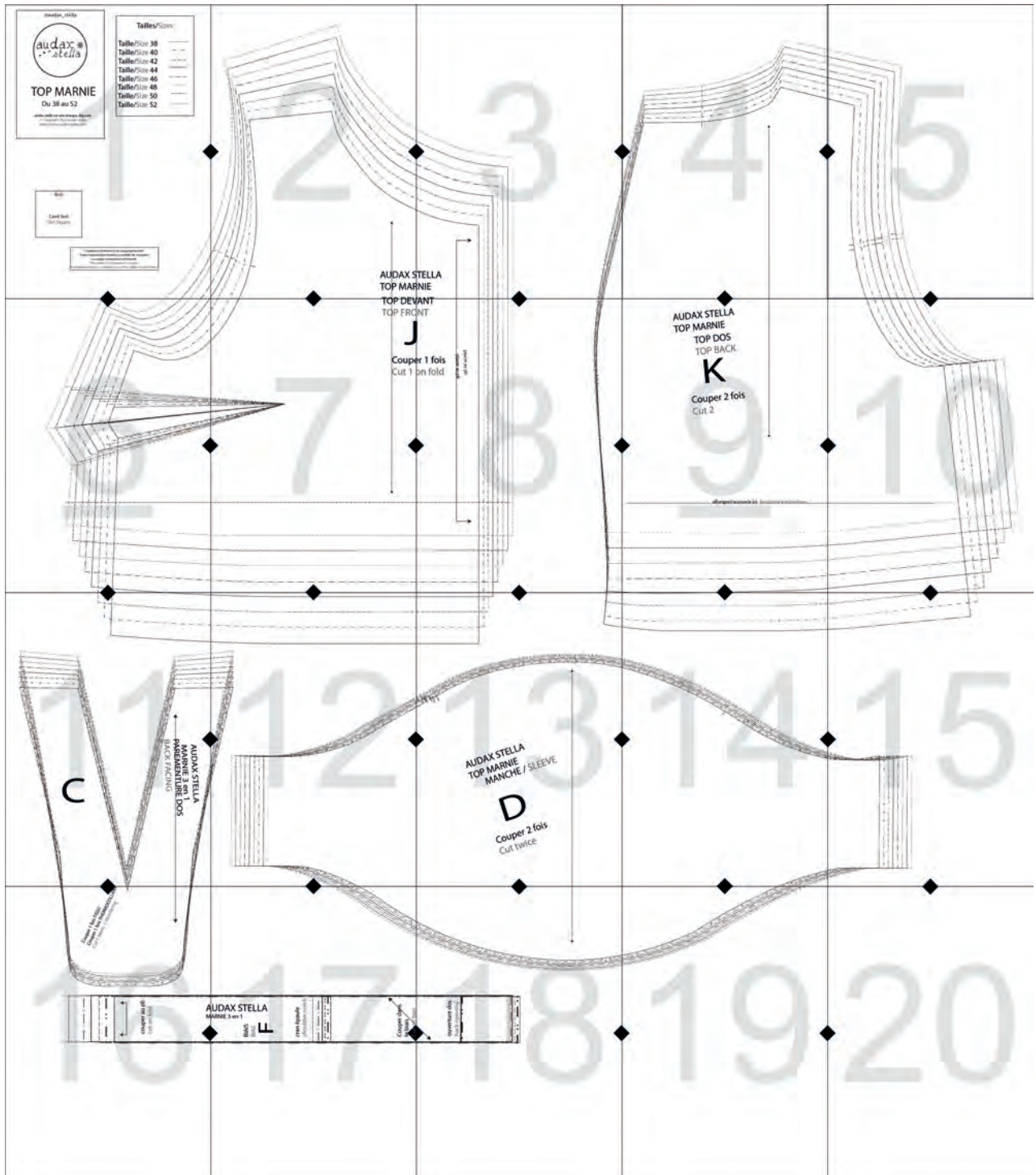
Apply the following setup once the dialogue box opens:



Etape 4. Print the first page, which is the test page to check that the little square is 4cm in height and width.

Etape 5. Print all the pages you need using the preview on the next page to help you assemble the sheets together.

A4 printing plan



Measurement Table

In order to sew Marnie, refer to your bust measurement. If you are between sizes choose the smaller one. Marnie has a good amount of ease, do not hesitate to make a muslin should you wish to lengthen it.

Audax Stella's patterns are designed for an average height of 170cm. If you are taller or shorter there are some lines on some pieces of the pattern to help you lengthen or shorten it.

Measurements in cm								
	38	40	42	44	46	48	50	52
Bust	88	92	96	100	104	108	112	116
Waist	72	76	80	84	88	92	96	100
Hips	98	102	106	110	114	118	122	126

Supplies

Choose a lightweight fabric that drapes well: viscose, voile, satin, silk or even velvet.

You will need for biggest sizes:

For the top: 0,9m of fabric in 140cm wide or 1,1m in 110cm wide fabric.

Interfacing: 40cm of light interfacing for the belts and the back facing.

Bias: if you do not wish to make it from the fabric you can buy one of 1m long for the top or the dress.

Cutting plan, advices and list of pattern pieces

Cut the pattern pieces using the cutting layout below. Mark all the notches on every pieces. Some pieces have a right and a left side, like the sleeves. The back has two notches and the front one.

Most of the pattern pieces should be cut twice once on the right side of the fabric and once on the wrong side of the fabric: since there is a left and a right side to each pattern piece.

Pay attention to the placement of the pattern pieces especially if you work with prints.

Fabric quantity is indicative as you may need more meters if you use print fabric for instance.

Seam allowances are 1cm unless mentioned otherwise.

List of pattern pieces

C. BACK FACING - cut 1 on the fold on the fabric and 1 on the interfacing

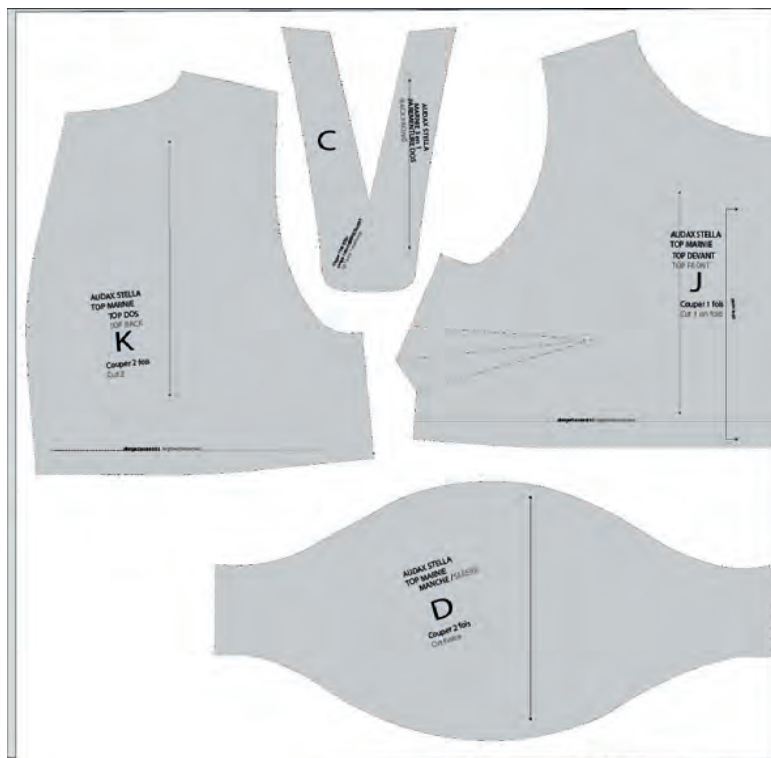
D. SLEEVE - cut 2 (1 on the right side, 1 on the wrong side)

F. BIAS - cut 1

J. TOP FRONT - cut 1 on the fold

K. TOP BACK - cut 2 (1 on the right side, 1 on the wrong side)

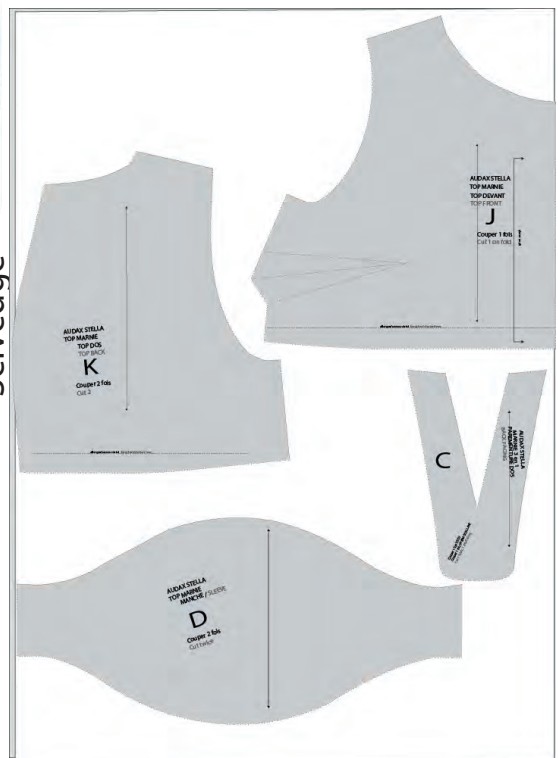
Cutting layout - Top 140 and 110 cm wide fabric



Fold

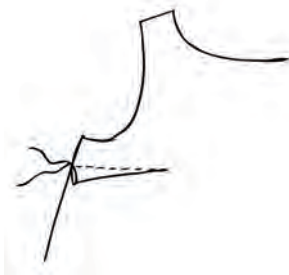
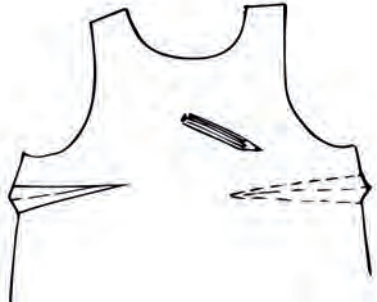
Fold

Selvedge



Sewing instructions: THE TOP

1. Sew the two darts of the FRONT (J) by matching the notches (dotted lines illustrated) right sides together. Press the dart towards the bottom.



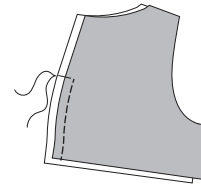
2. Interface the facing (C) on the wrong side



3. Finish the edges of the following pieces :
- the SLEEVES (D) sides and hemline,
- the BACK (K) shoulders, sides, center back
- the FRONT (J) shoulders, sides, hemline
- the outer edges of the FACING (C),
Pay attention to keep your notches visible

4. Pin together the center back of the two BACK (K) pieces right side together from the notch until the hemline and sew at 1cm

Press the seams open.



5. Align the top edges of the BACK (K) to the internal edges of the FACING (C) right side together.

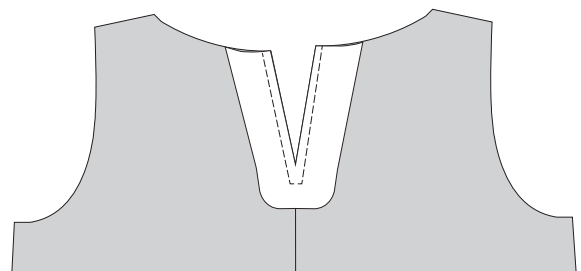
- Pin the FACING (C) along the BACK (K) opening right sides together
- Match the facing's notch to the back's notch.

Sew at 1cm from the notches up to the edges (you will have a v-shape seam)
Make several stay stitches to secure the angle (where you initially pinned your notches). Clip the angle.

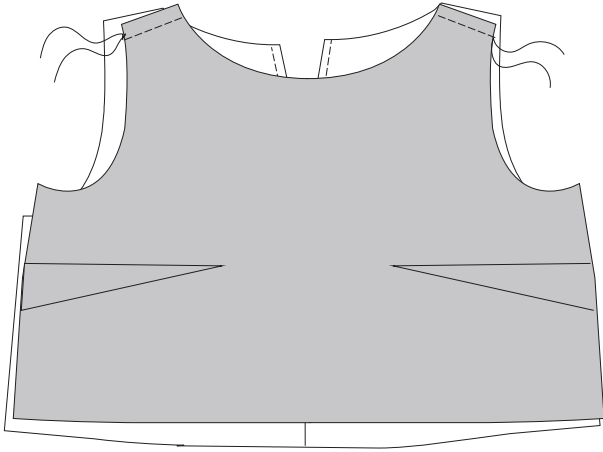


6. Turn the FACING (C) on the wrong side and press.

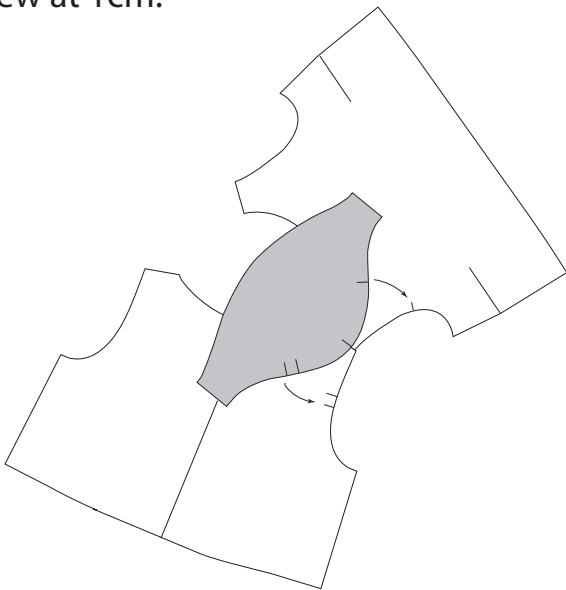
Topstitch the opening at 0.5cm.



7. Pin the shoulders of the BACK (K) and the FRONT (J) right sides together and sew at 1cm. Press the seams open.



8. Pin the sleeves to the armhole of the dress right sides together by matching the notches. The double notch on the sleeve is to be matched with the double notch of the BACK (K). The single notch at the middle of the sleeve is to be matched with the shoulder seam and the remaining notch is to be matched with the FRONT (J). Sew at 1cm.



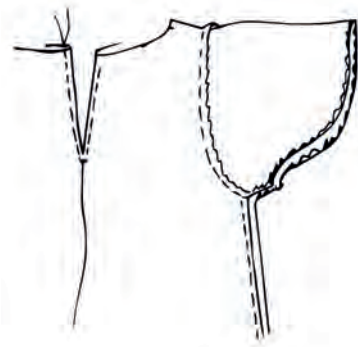
Note : The sleeve is a little bit longer than the armhole. In order to help you sew it, you can make gathers at the top of the sleeve so it matches the length of the armhole.

Serge the seams together and press them

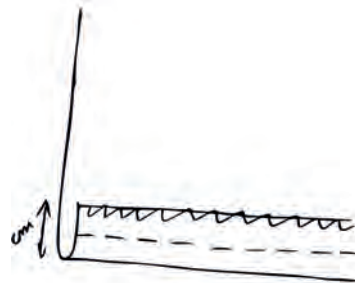
towards the sleeve.

9. Pin the sides of the dress right sides together. Pin together the hemline of the sleeve, the armhole seam, the front dart with the corresponding back notch, until the end (which is just before the round shape where the ruffles are going to be sewn).

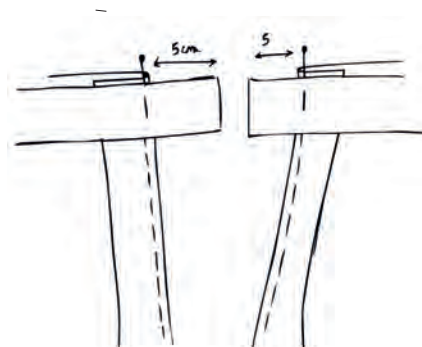
Sew at 1cm
Press the seams open.



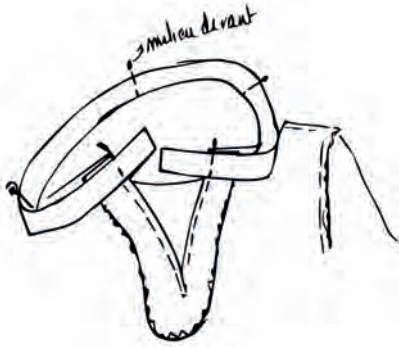
10. Fold the raw edges of the sleeves up to 1cm on the wrong side. Press and stitch at 0,5cm from the edge.



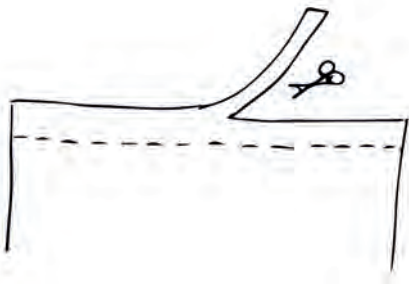
11. Take the BIAS (F) and mark each notch and pin them to the garment (back, shoulder, center front, back opening).



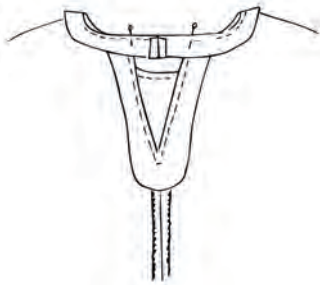
12. Sew at 1cm. Do not hesitate to gently pull the bias while sewing.



Clip the seam allowances at 0,5cm.



13. Pin the two raw edges of the bias right sides together and sew at 1cm. Press.



14. Fold the remaining long edge of the bias by 1cm toward the wrong side of the bias.



15. Align the edge of the fold toward the right side of the garment. Cover the first seam by 1mm, the idea is to hide this seam.

Sew at 1mm from the fold

