

FROM THE FOUNDER OF THE #VIKISEWS BRAND

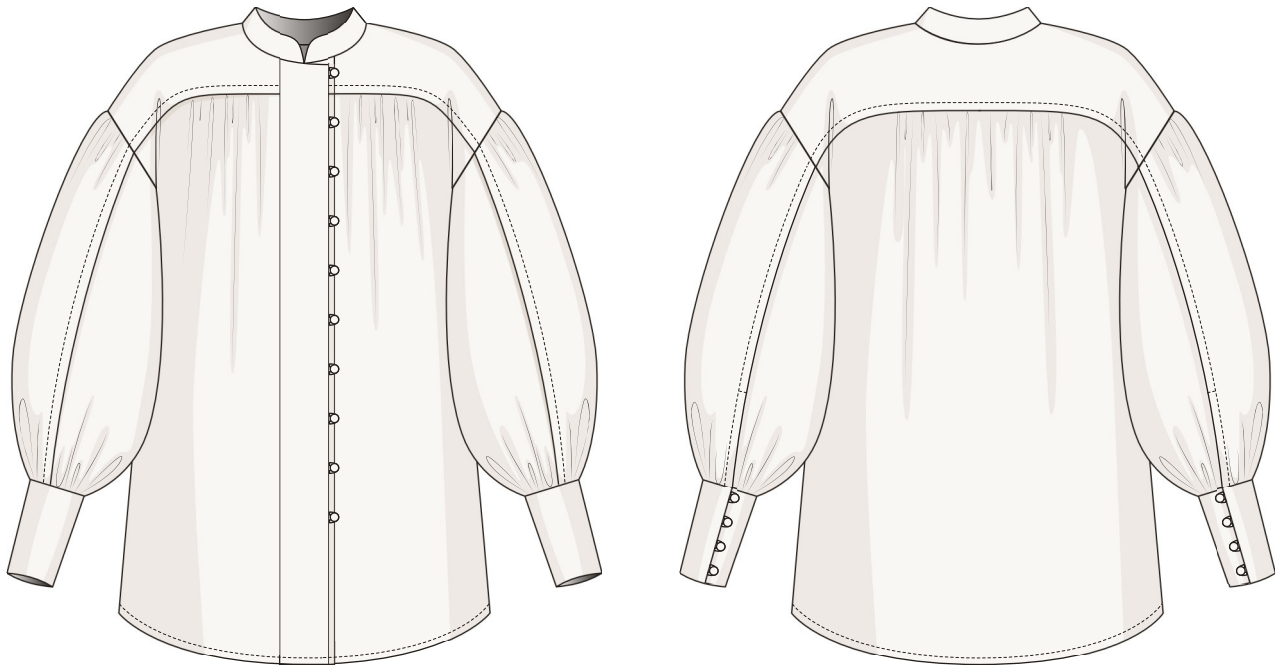


Back in 2016, when I was working on my first set of sewing instructions, I was trying to write them in such a way that even a complete beginner could easily understand and use them to create their very first garment. These instructions laid the foundation for the Vikisews brand, its vision and its mission. I wanted to create modern patterns with the utmost detailed and clear instructions.

Now, with each new collection we are constantly improving our instructions, amending them and adding more relevant details. By the time the final product reaches you, our drafters, correctors, and editors would have spent weeks perfecting every word and every photograph. If you compile a few of our instructions together, you will get a sewing manual that will assist you in sewing all kinds of garments at any difficulty level.

And I would be very happy if these instructions helped you to turn your hobby into a lifelong passion... Enjoy the process! Create your ultimate dream wardrobe! Wear your garments proudly for years to come!

If you have any questions, please contact us at info@vikisews.com — we are always there to help.



LIZA PATTERN DESCRIPTION

Liza is a voluminous straight-cut blouse. The front and back of the blouse has yokes that finish with a pintuck at their bottom edge. The center sections of the front and back feature gathers peeking out from underneath the yoke. The blouse has wide plackets at the center front which fasten with buttons and button rouleau loops. The blouse has a Mandarin collar and long, three-piece, set-in sleeves. There are gathers along the top part of the sleeve cap, as well as along the bottom edge of the sleeve. The sleeves have pintucks along the front and elbow seams. These pintucks align with those on the front and back yokes. The elbow seam on the sleeve finishes with a vent. The bottom edge of the sleeve features wide cuffs with a button and button rouleau loop fastening. Liza is hip-length.



IMPORTANT!

The contents of this pattern are copyright protected and belong exclusively to Vikisews. You may use Vikisews patterns for personal use. It is prohibited to share Vikisews patterns and instructions with third parties, as well as to publish patterns and instructions online for public access. According to part 1 of clause 1252 and clause 1301 of the Civil Code of the Russian Federation, failure to comply with the mentioned rules constitutes a breach of the legislation in force in the field of copyright and entails liability of the violator. Illegal use or distribution will be prosecuted in accordance with legislation.

You may use Vikisews patterns for commercial use, to sew custom-made garments and/or create fashion collections, on the condition that the patterns are solely used in a manufacturing setting and are not further shared with individuals.

TOTAL EASE ALLOWANCE

	Bust ease	Waistline ease	Hipline ease	Upper arm ease
cm	38.2–48.7	53.7–63.5	16.9–27.1	32–37.3
inches	15–19 1/8	21 1/8–25	6 5/8–10 5/8	12 5/8–14 5/8

GARMENT LENGTH, SLEEVE LENGTH

Height, cm	Garment length at center back, cm	Sleeve length including shoulder and cuff width, cm
1 (154–160)	65.7–67.5	73.8–75.6
2 (162–168)	68.7–70.5	75.6–78.4
3 (170–176)	71.7–73.5	77.9–79.5
4 (178–184)	74.7–76.5	79.5–81.1

Height, ft	Garment length at center back, in	Sleeve length including shoulder and cuff width, in
1 (5'1"–5'3")	25 7/8–26 5/8	29–29 3/4
2 (5'4"–5'6")	27–27 3/4	29 3/4–30 7/8
3 (5'7"–5'9")	28 1/4–28 7/8	30 5/8–31 1/4
4 (5'10"–6'1")	29 3/8–30 1/8	31 1/4–31 7/8

SUGGESTED FABRIC

To sew this blouse, choose blouse-weight fabrics with the following properties:

- lightweight, pliable, soft, non-stretch or with very little stretch, sheer or semi-sheer
- the fiber content can include natural fibers (silk, cotton), artificial fibers (viscose), blends (cotton + silk, viscose + polyester, cotton + viscose, etc.), and synthetics (polyester, polyester + elastane)
- the following fabrics are recommended: gauze, textured viscose, silk, artificial silk, chiffon, batiste, organza.

Attention! We do not recommend heavyweight, thick fabrics (heavyweight linen, denim), as well as knit fabrics.

The blouse in the photo is made of textured viscose. The fabric is lightweight, pliable, soft, and stretchy. The fiber content is a blend of viscose (85%) and organic cotton (15%).

2. Lightweight knit or woven interfacing, 140 cm wide, for all sizes:

Height, cm	In meters
1 (154–160)	0.7
2 (162–168)	0.7
3 (170–176)	0.75
4 (178–184)	0.75

Lightweight knit or woven interfacing, 55" wide, for all sizes:

Height, ft	In yards
1 (5'1"–5'3")	3/4
2 (5'4"–5'6")	3/4
3 (5'7"–5'9")	7/8
4 (5'10"–6'1")	7/8

3. Eighteen (plus one extra) buttons or button blanks, 0.7–1 cm (1/4–3/8") in diameter.

4. Matching thread — 5 spools (1 spool for the sewing machine + 4 spools for the overlocker).

TOOLS AND EQUIPMENT

- sewing machine for construction
- overlocker for finishing raw edges. This may be replaced with a stretch overlock stitch or a zigzag stitch on the sewing machine (overlock or zigzag stitch width 2–3 mm, stitch length 2.5 mm)
- edgestitch foot for the sewing machine (optional)
- loop turner (optional)
- hand-press tool for button covering and button blanks (optional).

If one of the pieces ends up longer than the other after basting, do not rush to true them by cutting off the excess or stretching the shorter piece. First make sure that the notches are properly matched, lay the pieces on a flat surface and try to re-baste them together. If the pieces still don't match in length because they have stretched or there has been a cutting mistake, you can always true the pieces after the fitting, during the construction of the garment.

After assembling the garment, press it lightly and press the seam allowances either to one side or open.

What to look for during fitting?

The left and right sides of the garment should look the same.

Check the garment balance – the side seams should be vertical.

The hems should not open or overlap at the front of the blouse.

The garment hem should be straight and parallel to the floor.

Evaluate the fit of the front and back while looking at the person from the side. The front and back should not be riding up or sagging. There shouldn't be any horizontal wrinkles across the back or any tension across the shoulder blades, shoulders or under the collar.

Evaluate the side seams from the front or back. The garment sides should not sag or ride up.

Verify the garment length.

Check the shape of the collar stand. The collar stand should sit flush against the neck at the back.

Check for fit issues associated with individual features of the body (for example, an asymmetrical figure with shoulders at different levels, etc.).

The button placement shouldn't cause any pulling, folds or creases.

Verify the garment volume, there should be enough ease for a comfortable fit.

After the fitting, mark changes symmetrically to both sides of the garment; if needed, baste once more for another fitting.



Using a 4 mm stitch length and working from the right side, machine two rows of gathering stitches in-between the notches along the top edge of the front (2 pieces) and back pieces. One row should be at 1.5 cm (5/8") from the edge and the second at 1.7 cm (3/4").

Pull on both lower (bobbin) threads simultaneously to form gathers.

The gathered section should be as long as the central section of the yoke (in-between the notches).