

IMPORTANT!

The contents of this pattern are copyright protected and belong exclusively to VikiSews. You may use VikiSews patterns for personal use. It is prohibited to share VikiSews patterns and instructions with third parties, as well as to publish patterns and instructions online for public access. You may use VikiSews patterns for commercial use, to sew custom-made garments and/or create garment collections, on the condition that the patterns are solely used in a manufacturing setting and are not further shared with individuals.

VILLANELLE

#vikisews

PATTERN DESCRIPTION

Villanelle is a semi-fitted quilted double-breasted coat with a straight silhouette. It's made with raincoat fabric and insulated with Isosoft 200. Diamond-shaped quilting is done on the front, back, and sleeve pieces. The bust darts on the front as well as the shoulder darts on the back start at the shoulder seam. The welt pockets, located below the waist, are placed over the side seams. Flaps are topstitched above the welt and cover the pocket opening. The classic notched collar has a stand and rectangular shaped lapels. The coat has a dropped shoulder and set-in two-piece long sleeves decorated with a tab and button. Villanelle is cinched in at the waist with a tie belt which passes through two belt loops at the side seams. Villanelle fastens with sew-on snaps and is mid-calf length.

The coat on the model is sewn with an asymmetrical quilted pattern on the front.



TOTAL WEARING EASE

Bust ease, cm	Waistline ease, cm	Hipline ease, cm	Upper arm ease, cm
23,5	44,5	20	12-17

GARMENT LENGTH, SLEEVE LENGTH

Garment length is measured at center back.

Height, cm	Back length, cm	Sleeve length, cm
1 (154-160)	111	56
2 (162-168)	115	58
3 (170-176)	119	60
4 (178-184)	123	62

SUGGESTED FABRIC

To sew this coat, choose raincoat and outerwear fabrics with the following properties:

- Medium weight, flexible, breathable, soft, non-stretch, opaque
- The fiber content can include natural fibers (cotton), artificial (viscose), blends (cotton + polyester, etc.), and synthetic (polyester, polyester + elastane)
- The following fabrics are recommended: blended raincoat fabrics, Dewspo, tweed, taffeta, Taslan, and other water-repellent and water-resistant materials.

Attention! We do not recommend stretchy knit materials or lightweight sheer materials (chiffon, organza, stretch lace).

For the insulation material, we recommend Alpolux 200, Isosoft 200, Fibertech, hollow-fiber, Thinsulate, Primaloft, or pre-quilted insulated material.

For the lining, we recommend artificial fibers (viscose), blends (viscose + elastane, viscose + polyester), or synthetic fibers (polyester, polyester + elastane).

The coat on the photo is made with raincoat fabric. This material is medium weight and non-stretch. The fiber content is 100% polyester. The lining is 100% viscose.

FABRIC AND NOTIONS REQUIREMENTS

1. Main fabric, 140cm wide, with nap or directional print, in meters:

Size Height, cm	34	36	38	40	42	44	46	48	50	52
1 (154-160)	3,5	3,52	3,54	3,58	3,62	3,66	3,71	3,75	3,81	3,89
2 (162-168)	3,6	3,6	3,61	3,63	3,66	3,7	3,74	3,79	3,83	3,92
3 (170-176)	3,7	3,71	3,71	3,72	3,74	3,75	3,79	3,83	3,89	3,97
4 (178-184)	3,8	3,81	3,82	3,82	3,83	3,84	3,86	3,87	3,97	4,01

Main fabric, 140cm wide, without nap or with a non-directional print, in meters:

Size Height, cm	34	36	38	40	42	44	46	48	50	52
1 (154-160)	3,49	3,5	3,52	3,53	3,54	3,59	3,63	3,7	3,76	3,82
2 (162-168)	3,56	3,58	3,58	3,62	3,68	3,67	3,73	3,79	3,86	3,91
3 (170-176)	3,69	3,7	3,7	3,7	3,75	3,75	3,81	3,82	3,87	3,92
4 (178-184)	3,75	3,8	3,8	3,81	3,83	3,8	3,85	3,89	3,95	4,02

2. Lining fabric, 140cm wide, for all sizes:

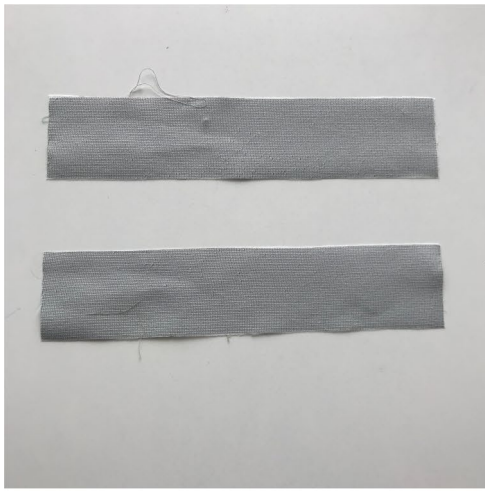
Height, cm	Yardage, m
1 (154-160)	1,93
2 (162-168)	1,99
3 (170-176)	2,05
4 (178-184)	2,11

IMPORTANT!

When purchasing fabric, please account for shrinkage and buy 5% more than required.

3. Isosoft 200 insulation material, 150cm wide, without nap, in meters:

Size Height, cm	34	36	38	40	42	44	46	48	50	52
1 (154-160)	2,5	2,53	2,55	2,56	2,56	2,57	2,59	2,61	2,66	2,68
2 (162-168)	2,59	2,61	2,63	2,65	2,67	2,69	2,71	2,73	2,75	2,77
3 (170-176)	2,57	2,6	2,67	2,71	2,73	2,74	2,76	2,78	2,83	2,85
4 (178-184)	2,61	2,63	2,69	2,72	2,75	2,78	2,81	2,85	2,91	2,95



Prior to interfacing the pieces, we recommend testing the interfacing and/or seam tape interfacing on a scrap piece of the main fabric. Also check your iron settings: what temperature suits your fabric, can the interfacing be applied with steam, as well as the time needed to hold the iron over the interfacing for perfect adhesion.

Fully interface the following pieces:

- Welt – 2 pieces

Partially interface the following:

- Pockets location on the front and back (as indicated on pattern pieces)



To interface, put the gluey side of the interfacing (the side that feels rough to the touch) on top of the wrong side of the fabric piece (or a section thereof) and press with the iron. Do not iron the piece, but instead press it section by section, holding it down with the iron a few seconds until that section is adhered and then pressing down the next section. You may use a cotton pressing cloth to protect your iron sole. Once the interfacing process complete, leave the piece on a hard flat surface for 15 minutes for it to cool down.



Hand baste around the perimeter of this area to ensure it doesn't shift during quilting. Mark the placement of the pocket and the center front line with hand stitches. Hand stitches must be made in light-colored thread to avoid bleeding onto the fabric during pressing and steaming steps.

Mark the quilting lines on the right side of the main pieces. Prior to this, verify that the soap or chalk comes off and doesn't leave grease marks on your fabric after pressing. We recommend using waxed chalk, but make sure to also test it on a scrap piece of your fabric.



Roughly cut the pieces, then cut off the excess seam allowance from the paper pattern pieces.

Place the pattern piece on top of the fabric and mark the quilting lines on the edges using a ruler.

The quilting lines marked on the front pattern piece match the ones on the right front side on the modelled coat. The quilting on the left front side on the photographed coat has a bigger scale, with 20cm side squares.