

# FROM THE FOUNDER OF THE #VIKISEWS BRAND

---

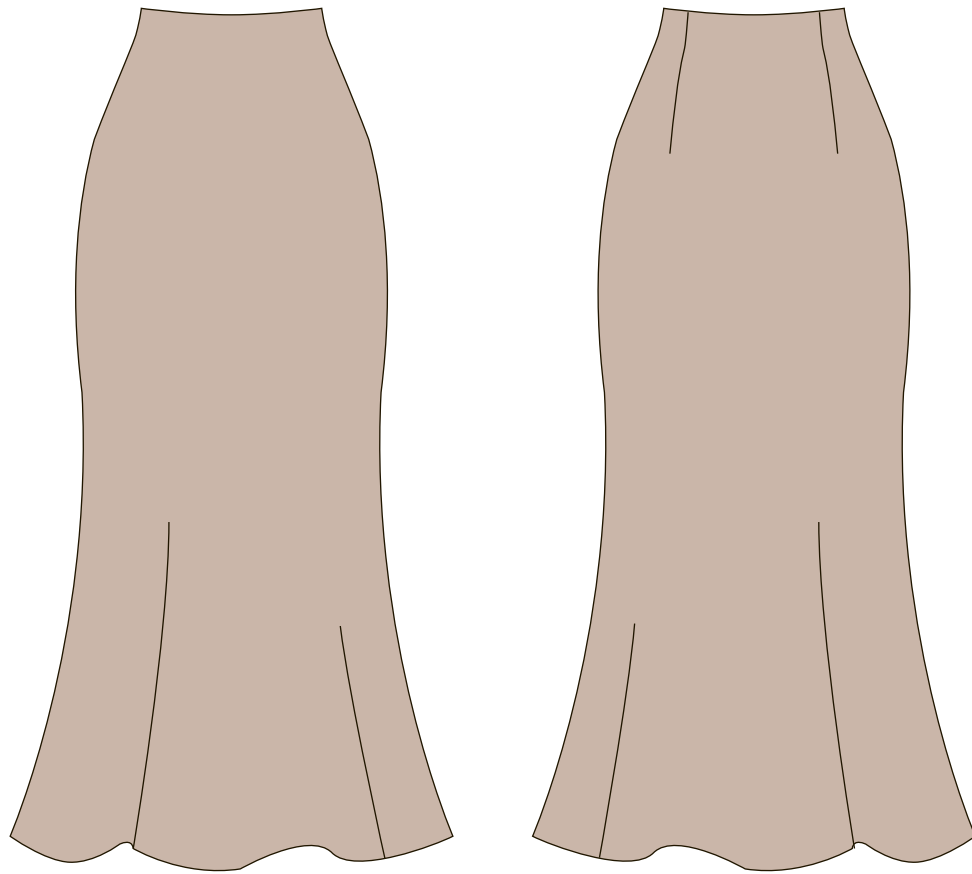


Back in 2016, when I was working on my first set of sewing instructions, I was trying to write them in such a way that even a complete beginner could easily understand and use them to create their very first garment. These instructions laid the foundation for the Vikisews brand, its vision and its mission. I wanted to create modern patterns with the utmost detailed and clear instructions.

Now, with each new collection we are constantly improving our instructions, amending them and adding more relevant details. By the time the final product reaches you, our drafters, correctors, and editors would have spent weeks perfecting every word and every photograph. If you compile a few of our instructions together, you will get a sewing manual that will assist you in sewing all kinds of garments at any difficulty level.

And I would be very happy if these instructions helped you to turn your hobby into a lifelong passion... Enjoy the process! Create your ultimate dream wardrobe! Wear your garments proudly for years to come!

If you have any questions, please contact us at [info@vikisews.com](mailto:info@vikisews.com) — we are always there to help.



## SATI PATTERN DESCRIPTION

---

Sati is a bias-cut close-fitting skirt with a slight trapeze silhouette and an elastic waistband. Sati has a luxe finishing with French seams and a pin hem, without the use of an overlocker. Sati is above-ankle length.



## IMPORTANT!

---

The contents of this pattern are copyright protected and belong exclusively to Vikisews. You may use Vikisews patterns for personal use. It is prohibited to share Vikisews patterns and instructions with third parties, as well as to publish patterns and instructions online for public access. According to part 1 of clause 1252 and clause 1301 of the Civil Code of the Russian Federation, failure to comply with the mentioned rules constitutes a breach of the legislation in force in the field of copyright and entails liability of the violator. Illegal use or distribution will be prosecuted in accordance with legislation.

You may use Vikisews patterns for commercial use, to sew custom-made garments and/or create fashion collections, on the condition that the patterns are solely used in a manufacturing setting and are not further shared with individuals.

# IMPORTANT!

Due to the nature of the bias cut and various properties of different fabrics, the volume of the skirt might differ. To ensure proper fit, it's recommended to baste the skirt out of the main fabric prior to final construction. Cut the pieces with extra wide seam allowances, adding 2 cm (3/4") on each side of the front and back pieces. Start by basting the side seams along the original stitching line, which is at 3 cm (1 1/8") from the cut edge. Try it on and if the skirt is too tight across the hips, let out the side seam allowances as needed. Trim the seam allowances down to 1 cm (3/8") and continue with the construction of the skirt.

## TOTAL EASE ALLOWANCE

	Waistline ease	Hipline ease (in the pattern pieces)
cm	3.9	7*
inches	1 1/2	2 3/4*

*IMPORTANT! The actual ease in the hips is 0–1 cm (0–3/8") due to the nature of the bias cut.*

## GARMENT LENGTH

Height, cm	Skirt length at side seam, cm	Height, ft	Skirt length at side seam, in
1 (154–160)	89	1 (5'1"–5'3")	35
2 (162–168)	92	2 (5'4"–5'6")	36 1/4
3 (170–176)	95	3 (5'7"–5'9")	37 3/8
4 (178–184)	98	4 (5'10"–6'1")	38 5/8

*IMPORTANT! Due to the bias cut and various fabric properties, the skirt length might be bigger.*

## SUGGESTED FABRIC

To sew this skirt, choose lightweight woven fabrics with the following properties:

- soft, opaque, thin, with or without elastane, printed or solid colours;
- the fiber content can include natural fibers (silk), synthetic fibers (polyester, polyester + elastane), and blends (silk + elastane, etc.);
- the following fabrics are recommended: natural silk, silk satin, synthetic silk, synthetic satin, lightweight silk crepe.

The skirt in the photo is made of natural silk. This fabric is soft, opaque, and non-stretch.

*IMPORTANT! When purchasing fabric, please account for shrinkage and buy 5% more than required.*

## TOOLS AND EQUIPMENT

---

- sewing machine for construction

## PATTERN PIECES LIST

---

### 1. From main fabric:

- front skirt — cut 1
- back skirt — cut 1

### 2. Additional piece for measuring elastic (do not cut in fabric!)

- elastic waistband — cut 2

*IMPORTANT! Don't forget to transfer all pattern markings and notches onto the fabric.*

## SEAM ALLOWANCES

---

All pattern pieces include 1 cm (3/8") seam allowances.  
Take this into account when laying out pattern pieces on the fabric.



Pin each dart on the back skirt piece and hand-baste with a fine needle along the markings. Stitch on the machine, starting at the wide end and finishing at the perpendicular mark. Backstitch at the beginning of the stitching lines.

**Important!** Finish stitching at the dart point with a rounded edge and not a sharp corner. This is done to avoid having a protruding tip at the dart point on the right side of a bias cut garment.

Leave thread tails at the end of the stitching lines, tie a knot and cut the threads.



Press the darts flat, then press the dart allowance towards the center back. Carefully press the dart points using a tailor's ham.



To finish the side seams with French seams, complete the following steps.

Place the front and back skirt pieces wrong sides together along the side seams, matching all notches. Pin with fine pins and baste.



Stitch on the machine, sewing on the right side at 5 mm (just under 1/4") from the edge.

Trim the seam allowances down to 3 mm (1/8").