

FROM THE FOUNDER OF THE #VIKISEWS BRAND

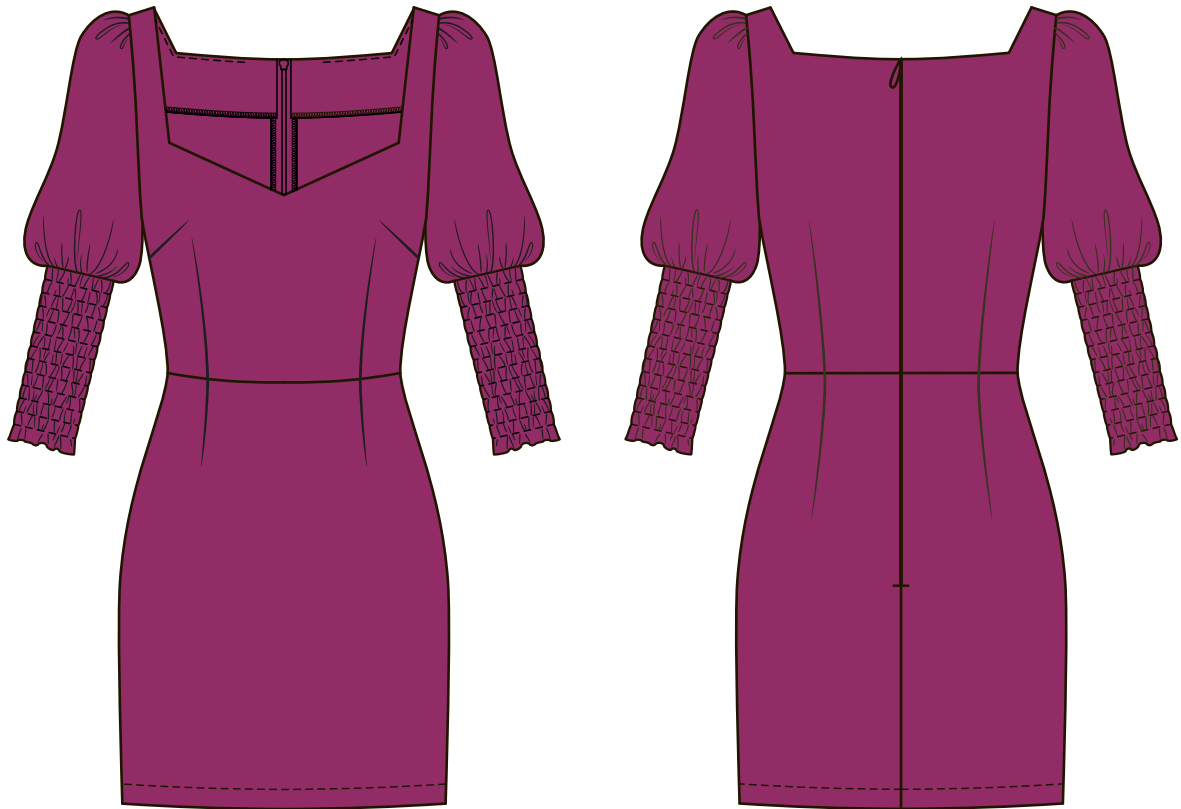


Back in 2016, when I was working on my first set of sewing instructions, I was trying to write them in such a way that even a complete beginner could easily understand and use them to create their very first garment. These instructions laid the foundation for the Vikisews brand, its vision and its mission. I wanted to create modern patterns with the utmost detailed and clear instructions.

Now, with each new collection we are constantly improving our instructions, amending them and adding more relevant details. By the time the final product reaches you, our drafters, correctors, and editors would have spent weeks perfecting every word and every photograph. If you compile a few of our instructions together, you will get a sewing manual that will assist you in sewing all kinds of garments at any difficulty level.

And I would be very happy if these instructions helped you to turn your hobby into a lifelong passion... Enjoy the process! Create your ultimate dream wardrobe! Wear your garments proudly for years to come!

If you have any questions, please contact us at info@vikisews.com — we are always there to help.



GLORIA PATTERN DESCRIPTION

Gloria is a close fitting dress with a sweetheart neckline. The slim fit shaping is achieved with front and back waist darts, both on the bodice and the skirt. The front also features bust darts that start at the side seam. Gloria has voluminous sleeves with gathering along the sleeve cap and at the bottom, just above the close fitting long shirred cuffs. The shirring on the cuffs starts 2 cm (3/4") away from the hemmed edge, thus forming a ruffle at the bottom of the sleeve. The 3/4 sleeve length can be adjusted with the shirred cuff. The dress fastens with an invisible zipper in the center back seam. Gloria is above knee, mini length.



IMPORTANT!

The contents of this pattern are copyright protected and belong exclusively to Vikisews. You may use Vikisews patterns for personal use. It is prohibited to share Vikisews patterns and instructions with third parties, as well as to publish patterns and instructions online for public access. According to part 1 of clause 1252 and clause 1301 of the Civil Code of the Russian Federation, failure to comply with the mentioned rules constitutes a breach of the legislation in force in the field of copyright and entails liability of the violator. Illegal use or distribution will be prosecuted in accordance with legislation.

You may use Vikisews patterns for commercial use, to sew custom-made garments and/or create fashion collections, on the condition that the patterns are solely used in a manufacturing setting and are not further shared with individuals.

TOTAL WEARING EASE

Bust ease, cm	Waistline ease, cm	Hipline ease, cm	Upper arm ease, cm
3,7-4,1	3,1	4,4-4,5	16-16,1

GARMENT LENGTH, SLEEVE LENGTH

Garment length is measured at the back from the waist down. Sleeve length includes the cuff.

Height, cm	Garment length, cm	Sleeve length, cm
1 (154-160)	41	48,6-49,1
2 (162-168)	45	50,8-51,2
3 (170-176)	49	52,6-53,2
4 (178-184)	52,6-53,2	54,6-55,1

SUGGESTED FABRIC

To sew this dress, choose woven fabrics with the following properties:

- Medium weight, flexible, breathable, soft, non-stretch or with very little stretch, opaque;
- The fiber content can include natural fibers (silk, cotton, linen), artificial (viscose), blends (cotton + silk, linen + polyester, cotton + viscose, etc), and synthetic (polyester, polyester + elastane);
- The following fabrics are recommended: dress weight cotton, viscose poplin, lightweight denim, viscose challis, modal.

Attention! We do not recommend stretchy knit materials and lightweight sheer fabrics (chiffon, organza, stretch lace).

The dress on the photo is made with cotton fabric. This fabric is medium weight, soft and not stretchy. The fiber content is 100% cotton.

PATTERN PIECES LIST

1. From main fabric:

- Front bodice – cut 1 on fold;
- Front skirt – cut 1 on fold;
- Back bodice – cut 2;
- Back skirt – cut 2;
- Sleeve – cut 2;
- Cuff – cut 2;
- Back neck facing – cut 2;
- Front neck facing – cut 1 on fold.

2. From interfacing:

- Front neck facing – cut 1 on fold;
- Back neck facing – cut 2.

IMPORTANT!

Don't forget to transfer all pattern markings and notches onto the fabric.

You will also need to cut two 2cm wide strips of interfacing for reinforcing the zipper area (measure the length from the pattern piece). The grainline on the interfacing strip should be along the long side (along the interfacing selvedge).

SEAM ALLOWANCES

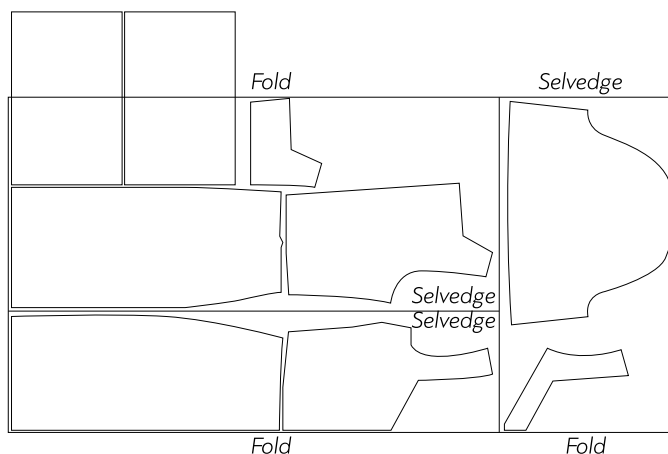
All pattern pieces include 1cm seam allowances, except the center back seam which has a 1.5cm seam allowance. The dress hem allowance is 4cm. Take this into account when laying out pattern pieces on the fabric.

CUTTING LAYOUT

Main fabric, 140cm wide, in two parts for size 34 in all heights, with a directional print

1st part – with two folds,

2nd part- with one fold.



Cut the cuff pieces from the leftover material.



On the wrong side of the following pieces, pin the darts along the marked lines: waist darts on the front and back skirt pieces, waist darts on the back bodice piece, and waist and bust darts on the front bodice piece. If desired, first baste by hand, then stitch on the sewing machine starting at the wide end and stitching to the dart apex. Backstitch at the beginning and end.



Press the darts flat, then press the allowance of the waist darts towards the center, and the bust darts up. Use a pressing ham to steam around the dart points.



Place the front and back skirt pieces right sides together along the side seams, matching all notches. If needed, hand baste the pieces. The basting stitch should be at 1.2-1.5cm from the edge, so that it doesn't get caught in the permanent stitching. Stitch the side seams on the sewing machine, backstitching at the beginning and end.

Overlock the seam allowances with the back piece facing up.

Press the seams flat, then press the seam allowances towards the front.