

FROM THE FOUNDER OF THE #VIKISEWS BRAND

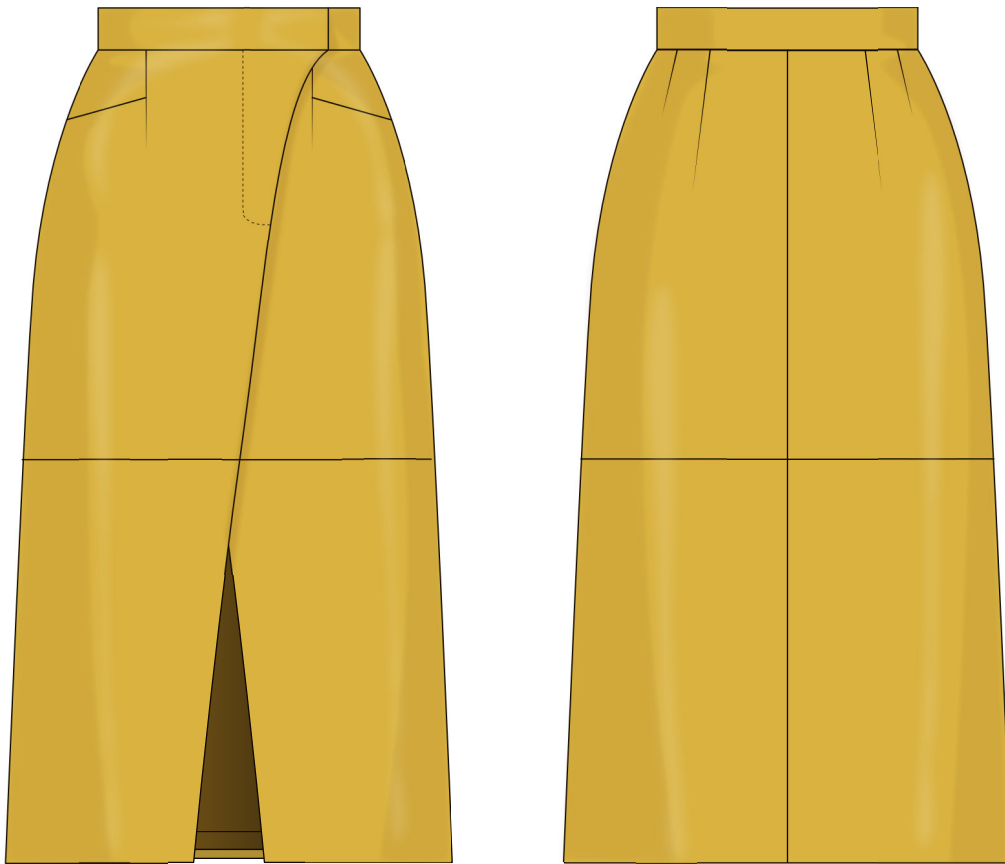


Back in 2016, when I was working on my first set of sewing instructions, I was trying to write them in such a way that even a complete beginner could easily understand and use them to create their very first garment. These instructions laid the foundation for the Vikisews brand, its vision and its mission. I wanted to create modern patterns with the utmost detailed and clear instructions.

Now, with each new collection we are constantly improving our instructions, amending them and adding more relevant details. By the time the final product reaches you, our drafters, correctors, and editors would have spent weeks perfecting every word and every photograph. If you compile a few of our instructions together, you will get a sewing manual that will assist you in sewing all kinds of garments at any difficulty level.

And I would be very happy if these instructions helped you to turn your hobby into a lifelong passion... Enjoy the process! Create your ultimate dream wardrobe! Wear your garments proudly for years to come!

If you have any questions, please contact us at info@vikisews.com — we are always there to help.



ILANA PATTERN DESCRIPTION

Ilana is a semi-fitted, slightly flared skirt with a straight silhouette. The skirt is lined and features darts both at the front and back, as well as a horizontal design line below the hip. The front features slash pockets at the top and an A-shaped slit at the bottom. The skirt fastens with an asymmetrical fly front zipper. The waistband fastens with snaps. Ilana is midi length.



IMPORTANT!

The contents of this pattern are copyright protected and belong exclusively to Vikisews. You may use Vikisews patterns for personal use. It is prohibited to share Vikisews patterns and instructions with third parties, as well as to publish patterns and instructions online for public access. According to part 1 of clause 1252 and clause 1301 of the Civil Code of the Russian Federation, failure to comply with the mentioned rules constitutes a breach of the legislation in force in the field of copyright and entails liability of the violator. Illegal use or distribution will be prosecuted in accordance with legislation.

You may use Vikisews patterns for commercial use, to sew custom-made garments and/or create fashion collections, on the condition that the patterns are solely used in a manufacturing setting and are not further shared with individuals.

TOTAL EASE ALLOWANCE

	Waistline ease	Hipline ease
cm	4.1	6.1
inches	1 5/8	2 3/8

GARMENT LENGTH

Height, cm	Back length not including waistband, cm	Height, ft	Back length not including waistband, in
1 (154–160)	73	1 (5'1"–5'3")	28 3/4
2 (162–168)	76	2 (5'4"–5'6")	29 7/8
3 (170–176)	79	3 (5'7"–5'9")	31 1/8
4 (178–184)	82	4 (5'10"–6'1")	32 1/4

SUGGESTED FABRIC

To sew this skirt, choose suiting fabrics with the following properties:

- medium weight, easily pressed and steamed, soft, non-stretch or with very little stretch, opaque
- the fiber content can include natural fibers (wool, cotton), blends (wool + silk, wool + polyester, cotton + viscose, etc.), and synthetics (polyester, polyester + polyurethane)
- the following fabrics are recommended: wool suiting, cotton gabardine, corduroy, faux suede, faux leather

Attention! We do not recommend thin dress-weight fabrics (wool, cotton, polyester).

For the lining, we recommend artificial fibers (viscose), blends (viscose + elastane, viscose + polyester), and synthetics (polyester, polyester + elastane).

The skirt in the photo is made of faux leather. The fabric is medium weight, soft, has very little stretch and presses well. The fiber content is a blend of polyester and polyurethane.

The lining is 100% viscose.

Additionally, cut the following pieces from interfacing:

- two strips that are 4 cm (1 5/8") wide and as long as the slit seam allowances on the bottom front pieces
- one strip, 4 cm by 19 cm (1 5/8" by 7 1/2"), to interface the zipper section on the top front lining piece

The interfacing strips should be cut on the straight grain (parallel to the selvedge).

SEAM ALLOWANCES

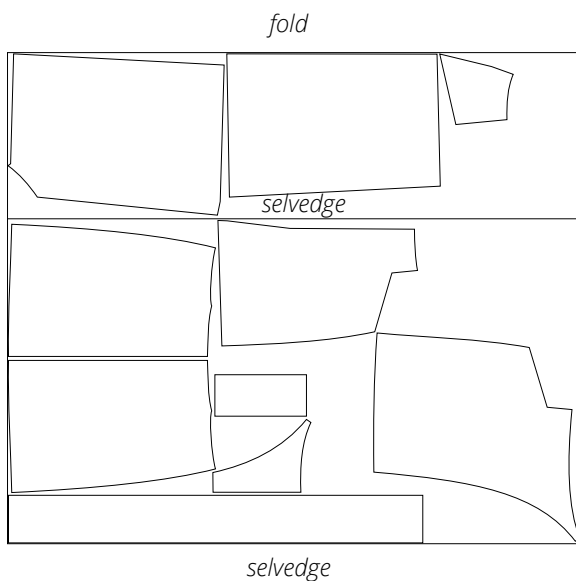
All pattern pieces include seam allowances as follows:

- garment hem allowance — 4 cm (1 5/8")
- all other edges — 1 cm (3/8")

Take this into account when laying out pattern pieces on the fabric.

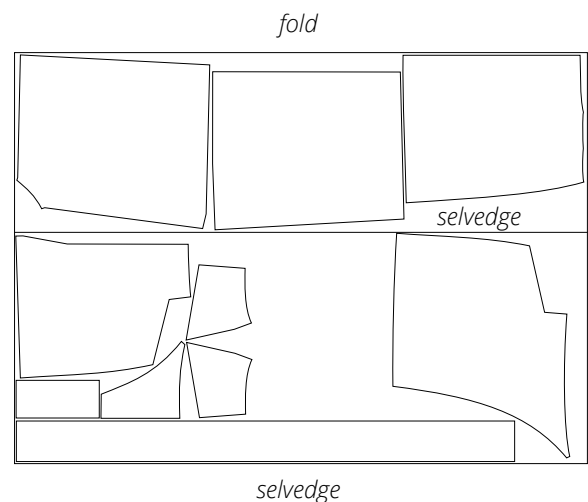
CUTTING LAYOUT

Main fabric, 140 cm (55") wide, with a directional print/nap, cut on a partial fold, for sizes 34–38 in all heights



Attention! Cut the left top front, right top front and fly facing pieces on the right side of the fabric.

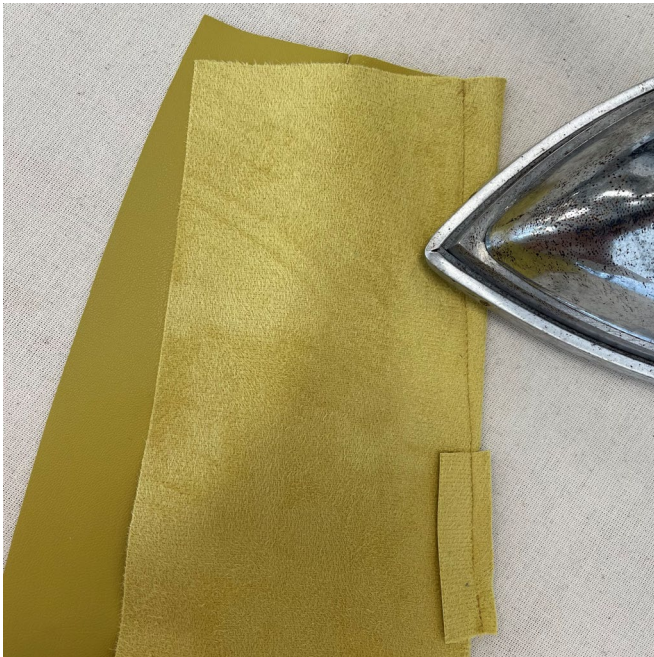
Main fabric, 140 cm (55") wide, with a directional print/nap, cut on a partial fold, for sizes 40–52 in all heights



Attention! Cut the left top front, right top front and fly facing pieces on the right side of the fabric.



Pin each dart on the wrong side of the top back pieces, inserting strips of the main fabric underneath the dart points. Position the strip so that it covers extra 1.5 cm (5/8") below the dart point.



Stitch on the sewing machine, starting on the strip of fabric and stopping at 1 cm (3/8") from the dart point. Then backstitch and machine-stitch the dart up to the top edge. Backstitch at the end of the seam.

Press the seam flat.



Cut the dart open in the middle, from the top edge to the strip of fabric.