

FROM THE FOUNDER OF THE #VIKISEWS BRAND

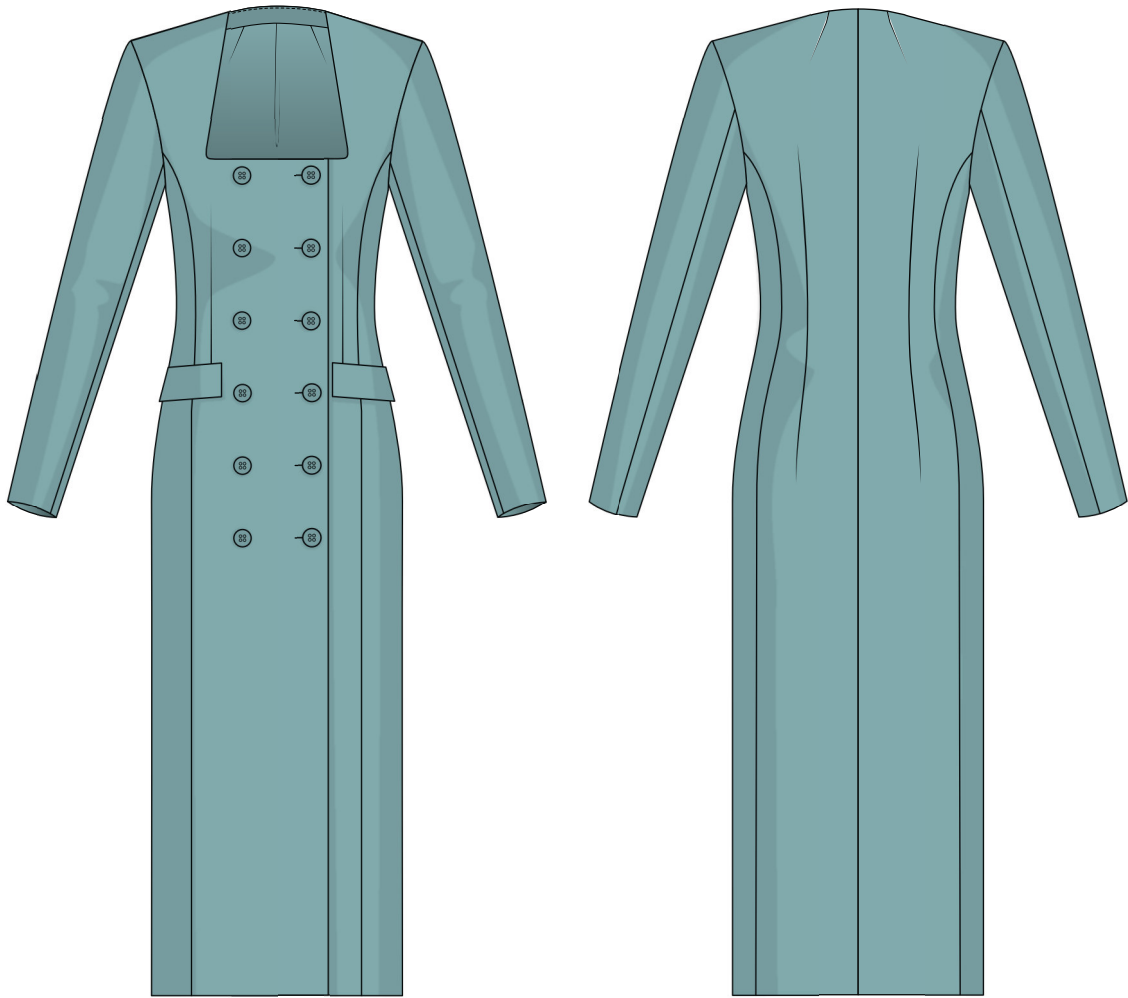


Back in 2016, when I was working on my first set of sewing instructions, I was trying to write them in such a way that even a complete beginner could easily understand and use them to create their very first garment. These instructions laid the foundation for the Vikisews brand, its vision and its mission. I wanted to create modern patterns with the utmost detailed and clear instructions.

Now, with each new collection we are constantly improving our instructions, amending them and adding more relevant details. By the time the final product reaches you, our drafters, correctors, and editors would have spent weeks perfecting every word and every photograph. If you compile a few of our instructions together, you will get a sewing manual that will assist you in sewing all kinds of garments at any difficulty level.

And I would be very happy if these instructions helped you to turn your hobby into a lifelong passion... Enjoy the process! Create your ultimate dream wardrobe! Wear your garments proudly for years to come!

If you have any questions, please contact us at info@vikisews.com — we are always there to help.



JENNIFER PATTERN DESCRIPTION

Jennifer is a semi-fitted dress with an accentuated waist. Both front and back feature vertical princess seams and waist darts. The dress has sewn-on flaps on the front and a center back seam. The deep square neckline blends into a grown-on collar stand shaped with darts at the back. The long set-in sleeves are made up of two pieces. The dress closes with a double-breasted button front closure. There is a free-hanging lining on the front and back. Jennifer is midi length.



IMPORTANT!

The contents of this pattern are copyright protected and belong exclusively to Vikisews. You may use Vikisews patterns for personal use. It is prohibited to share Vikisews patterns and instructions with third parties, as well as to publish patterns and instructions online for public access. According to part 1 of clause 1252 and clause 1301 of the Civil Code of the Russian Federation, failure to comply with the mentioned rules constitutes a breach of the legislation in force in the field of copyright and entails liability of the violator. Illegal use or distribution will be prosecuted in accordance with legislation.

You may use Vikisews patterns for commercial use, to sew custom-made garments and/or create fashion collections, on the condition that the patterns are solely used in a manufacturing setting and are not further shared with individuals.

TOTAL EASE ALLOWANCE

	Bust ease	Waistline ease	Hipline ease	Upper arm ease
cm	5.9–8.3	5.8–8.5	5.5–6.9	5–5.1
inches	2 3/8–3 1/4	2 1/4–3 3/8	2 1/8–2 3/4	2

GARMENT LENGTH, SLEEVE LENGTH

Height, cm	Back length (estimated), cm	Sleeve length, cm	Height, ft	Back length (estimated), in	Sleeve length, in
1 (154–160)	116.6–118.4	57.8–59.5	1 (5'1"–5'3")	45 7/8–46 5/8	22 3/4–23 3/8
2 (162–168)	120.6–122.4	59.7–61.5	2 (5'4"–5'6")	47 1/2–48 1/4	23 1/2–24 1/4
3 (170–176)	124.6–126.4	61.7–63.5	3 (5'7"–5'9")	49–49 3/4	24 1/4–25
4 (178–184)	128.6–130.4	63.8–65.6	4 (5'10"–6'1")	50 5/8–51 3/8	25 1/8–25 7/8

SUGGESTED FABRIC

To sew this dress, choose dress-weight and suiting fabrics with the following properties:

- medium weight, malleable, breathable, soft, non-stretch or with very little stretch, opaque
- the fiber content can include natural fibers (wool, silk, cotton), artificial fibers (viscose), blends (wool + silk, wool + polyester, polyester + viscose, etc.), and synthetics (polyester, polyester + elastane)
- the following fabrics are recommended: malleable suiting fabrics, dress-weight wool, gabardine, wool crepe.

Attention! We do not recommend stretchy knit fabrics and lightweight sheer fabrics (chiffon, organza, stretch lace).

For the lining, choose lining fabrics made of artificial fibers (viscose), blends (viscose + elastane, viscose + polyester), or synthetics (polyester, polyester + elastane).

The dress in the photo is made of suiting. The fabric is medium weight, soft, low-stretch and malleable. The fiber content is a blend of viscose and polyester.

The lining's fiber content is a blend of viscose and polyester.

2. Lining fabric, 140 cm wide,
for all sizes, in meters:

Height, cm	Meters
1 (154–160)	1.25
2 (162–168)	1.3
3 (170–176)	1.3
4 (178–184)	1.35

Lining fabric, 55" wide,
for all sizes, in yards:

Height, ft	Yards
1 (5'1"–5'3")	1 3/8
2 (5'4"–5'6")	1 3/8
3 (5'7"–5'9")	1 3/8
4 (5'10"–6'1")	1 1/2

IMPORTANT! When purchasing fabric,
please account for shrinkage and buy
5% more than required.

3. Lightweight knit or woven interfacing,
140 cm wide, for all heights, in meters:

Height, cm	Meters
1 (154–160)	1.3
2 (162–168)	1.35
3 (170–176)	1.4
4 (178–184)	1.45

Lightweight knit or woven interfacing,
55" wide, for all heights, in yards:

Height, ft	Yards
1 (5'1"–5'3")	1 3/8
2 (5'4"–5'6")	1 1/2
3 (5'7"–5'9")	1 1/2
4 (5'10"–6'1")	1 5/8

4. Twelve buttons, 2 cm (3/4") in diameter

5. Two backing buttons, 1.5–1.7 cm (5/8") in diameter

6. One pair of shoulder pads

7. Matching thread — 5 spools (1 spool for the sewing machine + 4 spools for the overlocker)

Check the size and placement of the small decorative pieces (flaps). Cut the flap out of calico and pin it to the garment.

Verify the garment length.

Check for fit issues associated with individual features of the body (for example, an asymmetrical figure with shoulders at different levels, etc.).

The button placement shouldn't cause any pulling, folds or creases.

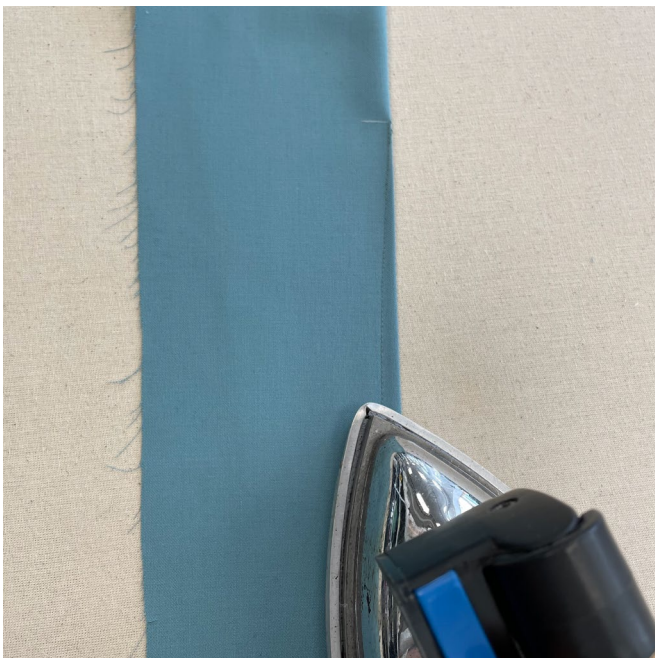
Verify the garment volume, there should be enough ease for a comfortable fit.

After the fitting, make changes symmetrically to both sides of the garment; if needed, baste once more for another fitting.



Match and pin the waist and shoulder dart legs on the wrong side of the back pieces.

Machine-stitch the shoulder darts moving from the wide end towards the dart point. Backstitch at the beginning. At the end of the seam, tie thread ends into a knot and hide the thread tail inside the dart. When stitching waist darts, tie thread ends into knots both at the beginning and end of the seam, and hide the thread tails inside the darts.



Press the darts flat.