

FROM THE FOUNDER OF THE #VIKISEWS BRAND

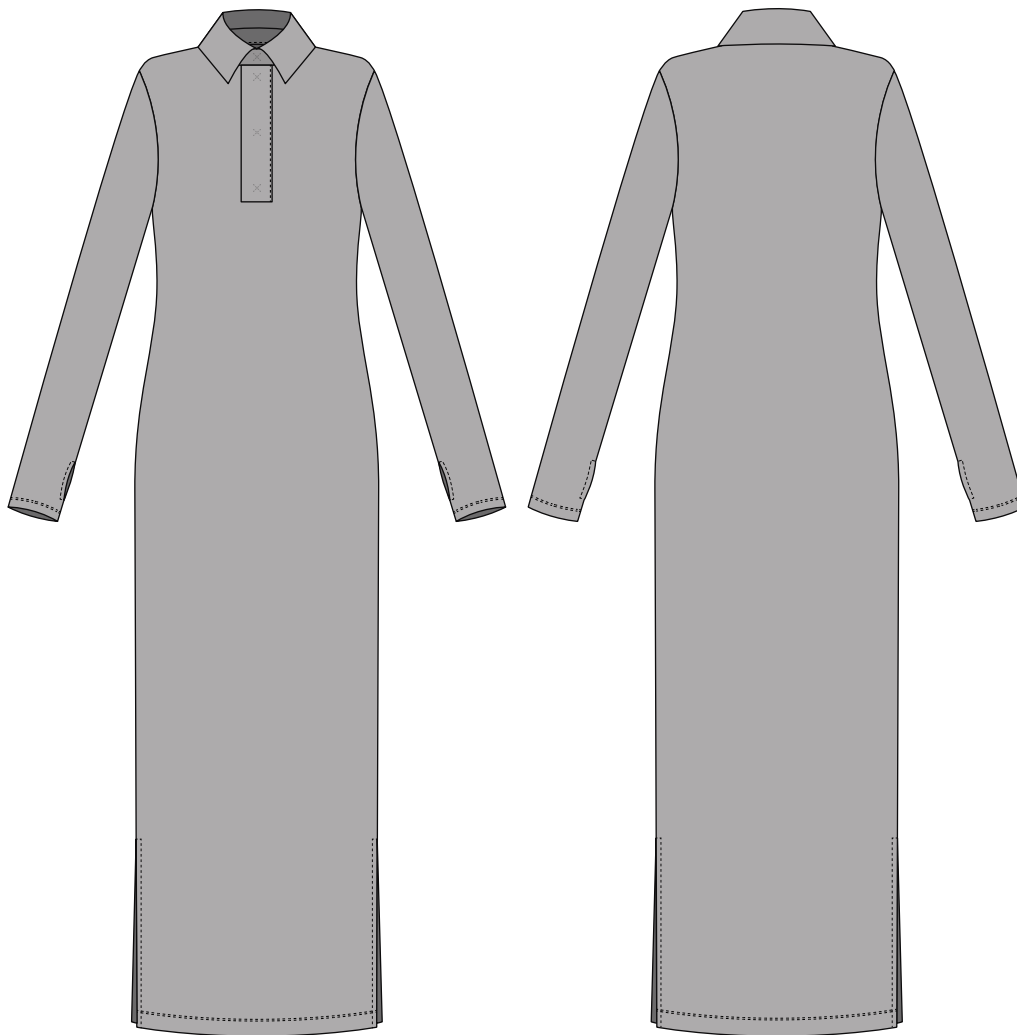


Back in 2016, when I was working on my first set of sewing instructions, I was trying to write them in such a way that even a complete beginner could easily understand and use them to create their very first garment. These instructions laid the foundation for the Vikisews brand, its vision and its mission. I wanted to create modern patterns with the utmost detailed and clear instructions.

Now, with each new collection we are constantly improving our instructions, amending them and adding more relevant details. By the time the final product reaches you, our drafters, correctors, and editors would have spent weeks perfecting every word and every photograph. If you compile a few of our instructions together, you will get a sewing manual that will assist you in sewing all kinds of garments at any difficulty level.

And I would be very happy if these instructions helped you to turn your hobby into a lifelong passion... Enjoy the process! Create your ultimate dream wardrobe! Wear your garments proudly for years to come!

If you have any questions, please contact us at info@vikisews.com — we are always there to help.



ANDIE PATTERN DESCRIPTION

Andie is a semi-fitted dress with a straight cut and a round neckline. Sizes 42–52 include bust darts. The dress has a turn-down collar, a collar stand, and a henley placket that closes with hidden set-in snaps. The set-in sleeves are long, close-fitting, and feature thumbholes. There are slits in the side seams. Andie is ankle-length.



IMPORTANT!

The contents of this pattern are copyright protected and belong exclusively to Vikisews. You may use Vikisews patterns for personal use. It is prohibited to share Vikisews patterns and instructions with third parties, as well as to publish patterns and instructions online for public access. According to part 1 of clause 1252 and clause 1301 of the Civil Code of the Russian Federation, failure to comply with the mentioned rules constitutes a breach of the legislation in force in the field of copyright and entails liability of the violator. Illegal use or distribution will be prosecuted in accordance with legislation.

You may use Vikisews patterns for commercial use, to sew custom-made garments and/or create fashion collections, on the condition that the patterns are solely used in a manufacturing setting and are not further shared with individuals.

TOTAL EASE ALLOWANCE

	Bust ease	Waistline ease	Hipline ease	Upper arm ease
cm	6.6–7.2	27.9–28.5	10.9–12	1.4–1.9
inches	2 5/8–2 7/8	11–11 1/4	4 1/4–4 3/4	1/2–3/4

GARMENT LENGTH, SLEEVE LENGTH

Height, cm	Back length, cm	Sleeve length, cm
1 (154–160)	126.4–127.3	66
2 (162–168)	130.4–131.2	68
3 (170–176)	134.4–135.2	70
4 (178–184)	138.4–139.1	72

Height, ft	Back length, in	Sleeve length, in
1 (5'1"–5'3")	49 3/4–50 1/8	26
2 (5'4"–5'6")	51 3/8–51 5/8	26 3/4
3 (5'7"–5'9")	52 7/8–53 1/4	27 1/2
4 (5'10"–6'1")	54 1/2–54 3/4	28 3/8

SUGGESTED FABRIC

To sew this dress, choose knit fabrics with the following properties:

- soft, stretchy and very stretchy (with a stretch factor of at least 1.7), medium-weight
- the fiber content should include elastane or spandex and can also include natural fibers (wool, cotton), artificial fibers (viscose), blends (wool + polyester, cotton + polyester, cotton + elastane, etc.), and synthetics (polyester, polyester + elastane)
- the following fabrics are recommended: soft sweater knits.

Attention! We recommend using only soft stretchy fabrics for this dress.

You can determine the stretch factor of your fabric yourself. Mark 10 cm (4") along the crosswise grain of the fabric, lay a ruler next to the marked section and stretch the fabric. Divide the measurement you get by 10.

The dress in the photos is made of soft sweater knit. The fabric is soft, opaque, not scratchy, has a good stretch and recovery, doesn't wrinkle. The fiber content is a blend of 10% viscose, 80% acrylic, and 10% spandex.

PATTERN PIECES LIST

1. From main fabric:

- front – cut 1 on fold
- back – cut 1 on fold
- sleeve – cut 2
- upper collar – cut 1 on fold
- undercollar – cut 1 on fold
- collar stand – cut 2 on fold
- placket – cut 2.

2. From interfacing:

- upper collar – cut 1 on fold
- undercollar – cut 1 on fold
- collar stand – cut 2 on fold
- placket – cut 2.

***IMPORTANT!** Don't forget to transfer all pattern markings and notches onto the fabric.*

Additionally, cut the following pieces from interfacing:

- 4 strips to interface the slit edges.

To interface the seam allowances, cut strips of interfacing that are 1.5 cm (5/8") wide and as long as the slit edge (measure on the pattern).

- 6 squares, 3×3 cm (1 1/8×1 1/8"), to reinforce the snap placement
- a strip to interface the bottom edge of the placket cutout (measure on the pattern).

The interfacing strips should be cut on the cross grain (perpendicular to the selvedge).

SEAM ALLOWANCES

All pattern pieces include seam allowances as follows:

- sleeve hem allowance – 2 cm (3/4")
- garment hem allowance – 4 cm (1 5/8")
- slit edges – 1.5 cm (5/8")
- all other edges – 1 cm (3/8").

Take this into account when laying out pattern pieces on the fabric.

Check for fit issues associated with individual features of the body (for example, an asymmetrical figure with different angles of the shoulder slope, etc.).

Verify the garment volume, there should be enough ease for a comfortable fit.

The snap/button placement shouldn't cause any pulling, folds or creases.

After the fitting, mark changes symmetrically to both sides of the garment; if needed, baste once more for another fitting.



Attention! Sizes 42–52 include a bust dart.

Match up the dart legs on the wrong side of the front piece. Pin and baste.



Machine-stitch, starting at the wide end of the dart and moving toward the dart point marking. Backstitch at the base of the dart only. At the tip of the dart, leave long thread tails, tie them into a knot, and hide them between the dart layers using a large-eye needle.