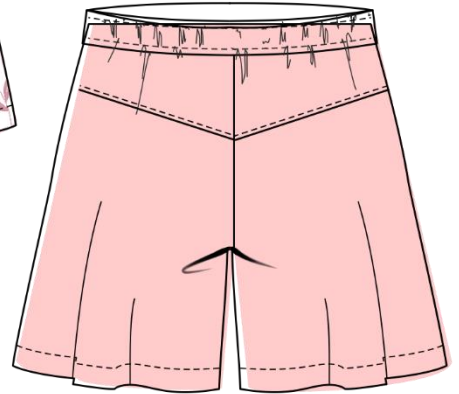
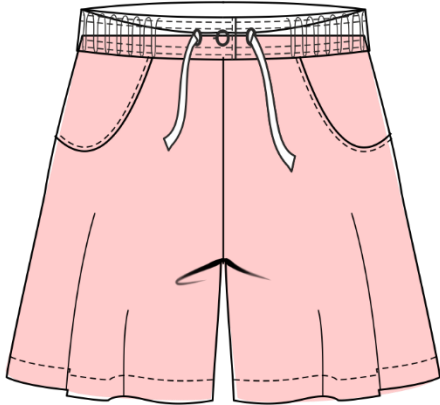
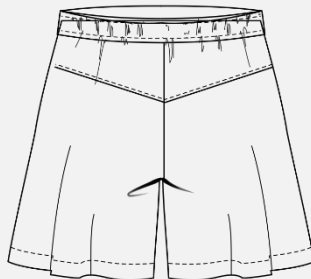


## Trousers Annuk



Sectional drawing :



**#trousersannuk**

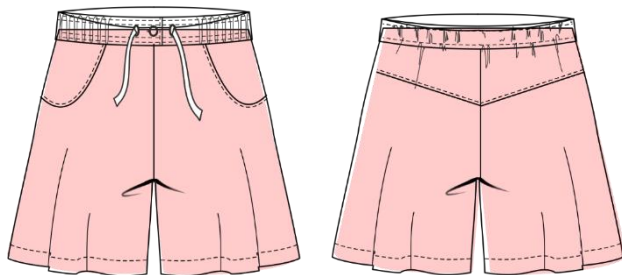
Art.-Nr: 5-E-16

Size: 34-54

Level:



## Sewing instructions - pattern



### Shopping List Pants Annuk

#### Material

- Jersey, French Terry, Muslin
- slightly stretchy fabrics)
- Ribbons (e.g. cord, satin ribbon, etc.)
- Eyelets / eyelet patches
- elastic 1,5cm wide 2x hip size
- Seam tape
- Remaining interlining for the eyelets
- Contrast fabric for piping to decorate (optional)

#### Fabric consumption 1,40m fabric width

Size 34-36	1,10m
Size 38-40	1,20m
Size 42-44	1,40m
Size 46-54	1,50m

#### Table of contents :

Licence of use  
Find the right size  
Technical drawing/cutting plan  
Adjusting the sewing machine  
Cutting

Page 3  
Page 4  
Page 5  
Page 6  
Page 7



### Licence of use

You will receive a usage licence for each purchased product (pattern / embroidery file / ebook).

### Commercial use

All self-made products from our patterns/embroidery files/e-books may be sold on a small scale (50 pieces). However, we insist that we are named as the manufacturer of the pattern/embroidery file/e-book with our name "TOSCAminni Schnittmanufaktur" as well as our internet address: [www.toscaminni.de](http://www.toscaminni.de).

The customer may only edit and use the contents beyond the scope stated with the consent of the respective rights holder. If you have any questions, please contact us at [info@toscaminni.de](mailto:info@toscaminni.de).

### Copyright

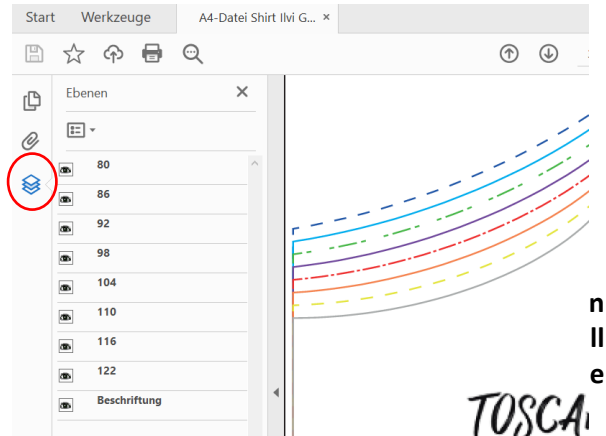
All products from our online shop have been designed and created by us. Our patterns / embroidery file / ebook are protected by copyright and may not be sold, given away, copied or altered.

We own the sole copyright unless expressly stated.

### Cut on layers

Each size is saved on its own layer. This makes it possible to show only the sizes you actually want to print. For this function you need Acrobat Reader, which you can download free of charge from the Internet.

Click on the layer symbol in Acrobat Reader and show or hide sizes as you wish. or hide.



Lines are drawn around the sheets with rows and pages, so you can use these as a guide when gluing them together.

### Tips for beamer users:

Improve the contrast when projecting on dark materials by using the following setting:

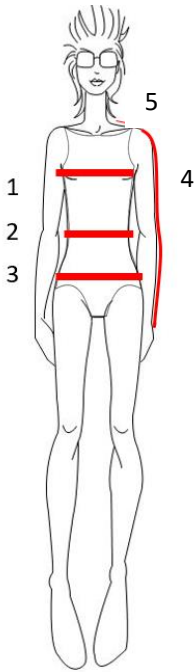
File / Edit / Settings / Accessibility (or Shortcut Ctrl+K

activate the check mark "Replace document colours

- deactivate the checkmark "Change colour of black text or vector graphics only".



## Find the right size



### 1 Bust measurement:

The bust is measured horizontally around the body. The tape measure is placed around the highest part of the chest and over the shoulder blades/back.

### 2 Waist measurement:

The tape measure is placed loosely around the waist.

### 3 Hip measurement:

The hip is measured around the strongest point

### 4 Arm length:

The arm length is measured with one arm slightly bent, over the elbow to the wrist

### 5 Shoulder width:

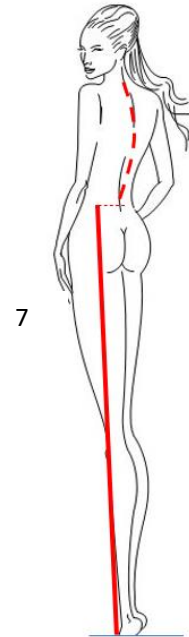
From the base of the neck to the ball of the arm

### 6 Back length:

Measure from the base of the neck to the waist

### 7 Side length:

Measure the length from the waist to the floor



## Ladies measurement chart

Size	34	36	38	40	42	44	46	48	50	52	54
Waist size	86	90	94	98	102	106	110	116	122	128	134

The hip size is decisive for the size selection. You can lengthen or shorten the trousers downwards as you wish.

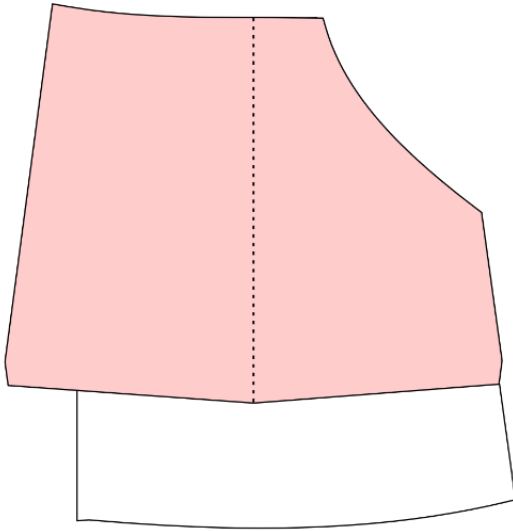
Compare the measurements of the paper pattern again with your personal measurements. Don't forget to subtract the seam allowance.

Tip: We draw in the seam allowance at the point to be measured with a pencil, so you can avoid calculation errors.





Fold



- There are marks on the pocket bag which you have transferred from the pattern - the piece is folded outwards exactly at this mark ... (see dotted line - it is called "fold pocket side part" on the cutting sheet).

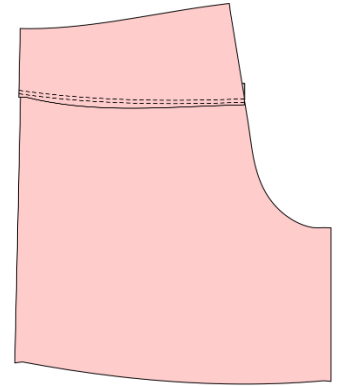
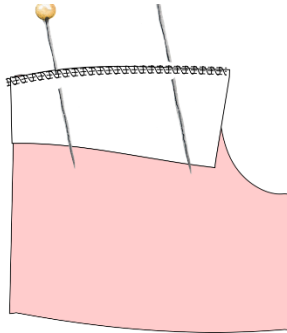
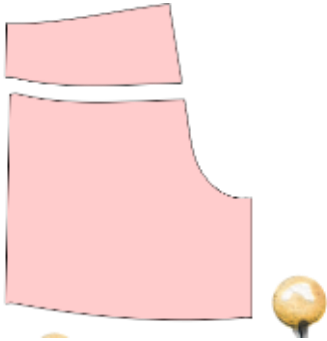


## Back part/saddle

You need the two back pieces and the two saddle pieces (to fit).

Place each yoke right sides together on the lower, back trousers panel - sew

Press the seam allowance into the yoke and topstitch (stitch size 4).



When sewing together, the piping is caught in between. Sew with the sewing machine again (as already mentioned, the piping is optional).





- Pull the elastic slightly tight around the hip and measure the required length - 2x the length is needed. Pull the elastic through the opening in the centre back with the help of a safety pin. If necessary, fix with a pin beforehand and check whether the width is comfortable.
- When everything fits, place the ends on top of each other and topstitch - hand-sew the opening with a few stitches. Finally, pull the binding through the eyelets - finished.



**Congratulations, you did it and you can be proud of yourself!**  
We would be pleased if you mark your works so that we can admire them.

**Hashtags: #toscaminni #trouserslune**

**Are you on Makerist?**

You can also show your work here in the [>>sewing show](#) - we would be happy if you link us here and rate the pattern.

**Impressum:**

Silvia Vogt  
TOSCAminni-Schnittmanufaktur  
Scheibenstraße 1  
94557 Niederalteich  
0160-4546016  
[www.toscaminni.de](http://www.toscaminni.de)  
[info@toscaminni.de](mailto:info@toscaminni.de)  
USt-IdNr.: DE 247560793

