

FROM THE FOUNDER OF THE #VIKISEWS BRAND

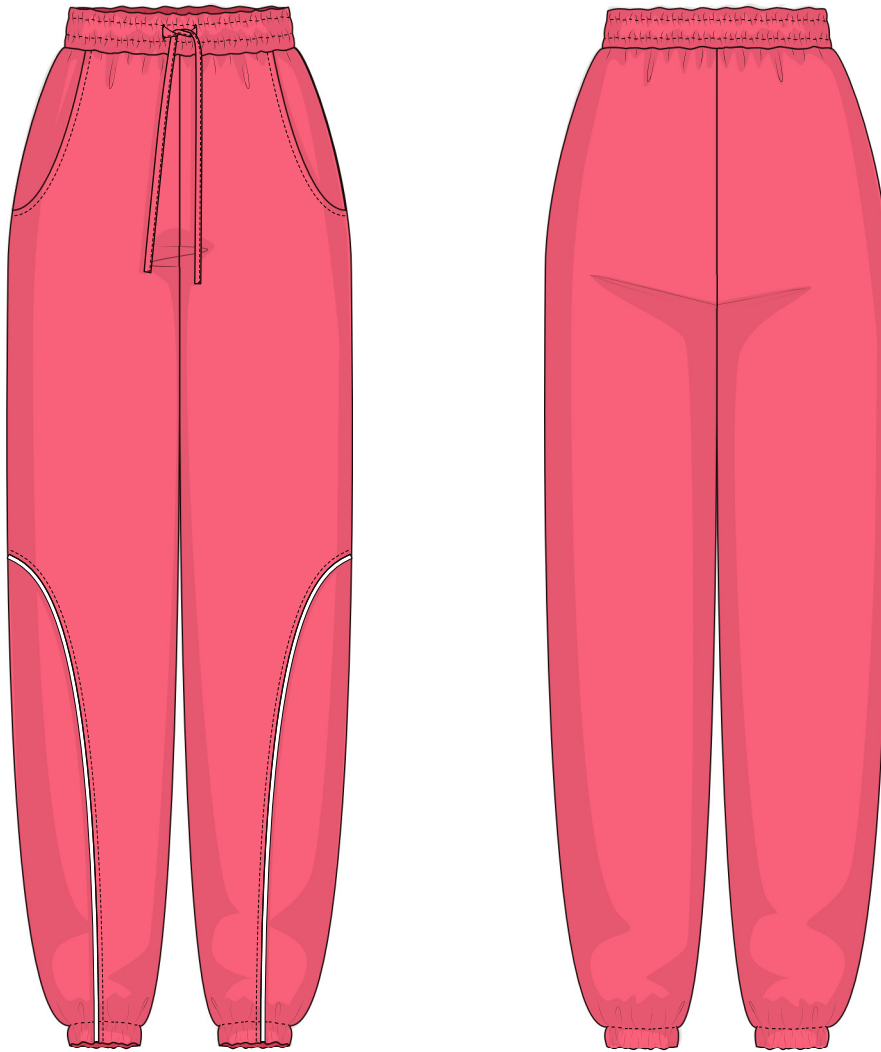


Back in 2016, when I was working on my first set of sewing instructions, I was trying to write them in such a way that even a complete beginner could easily understand and use them to create their very first garment. These instructions laid the foundation for the Vikisews brand, its vision and its mission. I wanted to create modern patterns with the utmost detailed and clear instructions.

Now, with each new collection we are constantly improving our instructions, amending them and adding more relevant details. By the time the final product reaches you, our drafters, correctors, and editors would have spent weeks perfecting every word and every photograph. If you compile a few of our instructions together, you will get a sewing manual that will assist you in sewing all kinds of garments at any difficulty level.

And I would be very happy if these instructions helped you to turn your hobby into a lifelong passion... Enjoy the process! Create your ultimate dream wardrobe! Wear your garments proudly for years to come!

If you have any questions, please contact us at info@vikisews.com — we are always there to help.



TRUA PATTERN DESCRIPTION

Trua is a pair of semi-fitted pants with a straight silhouette. The applied elasticated waistband is finished with two rows of topstitching that form a casing with a cord threaded through it. The front features slash pockets and design lines decorated with piping. The pants are hemmed with a casing for elastic. The garment is ankle-length.



IMPORTANT!

The contents of this pattern are copyright protected and belong exclusively to Vikisews. You may use Vikisews patterns for personal use. It is prohibited to share Vikisews patterns and instructions with third parties, as well as to publish patterns and instructions online for public access. According to part 1 of clause 1252 and clause 1301 of the Civil Code of the Russian Federation, failure to comply with the mentioned rules constitutes a breach of the legislation in force in the field of copyright and entails liability of the violator. Illegal use or distribution will be prosecuted in accordance with legislation.

You may use Vikisews patterns for commercial use, to sew custom-made garments and/or create fashion collections, on the condition that the patterns are solely used in a manufacturing setting and are not further shared with individuals.

TOTAL EASE ALLOWANCE

	Waistline ease	Hipline ease
cm	22.7–23	9–10.5
inches	8 7/8–9	3 1/2–4 1/8

GARMENT LENGTH

Height, cm	Side seam length including waistband, cm
1 (154–160)	99.3–101.2
2 (162–168)	103.6–105.5
3 (170–176)	107.9–109.8
4 (178–184)	112.2–114.1

Height, ft	Side seam length including waistband, in
1 (5'1"–5'3")	39 1/8–39 7/8
2 (5'4"–5'6")	40 3/4–41 1/2
3 (5'7"–5'9")	42 1/2–43 1/4
4 (5'10"–6'1")	44 1/8–44 7/8

SUGGESTED FABRIC

To sew this garment, choose knit fabrics with the following properties:

- soft, breathable, non-stretch or with very little stretch, medium-weight
- the fiber content can include natural fibers (wool, cotton), artificial fibers (viscose), blends (wool + polyester, cotton + polyester, cotton + elastane, etc.), and synthetics (polyester, polyester + elastane)
- the following fabrics are recommended: heavyweight sweatshirt fleece

Attention! We do not recommend lightweight knit fabrics, jersey fabrics, French terry and lighter weight sweatshirting.

The garment in the photo is made of heavyweight sweatshirt fleece. The fabric is soft and low-stretch. The fiber content is a blend of viscose, polyester and elastane.

IMPORTANT! When purchasing fabric, please account for shrinkage and buy 5% more than required.

2. Elastic, 4 cm wide, for waistband, for all heights, in centimeters:

Size	34	36	38	40	42	44	46	48	50	52
Centimeters	54	58	62	66	70	74	78	82	86	90

Elastic, 1 5/8" wide, for waistband, for all heights, in inches:

Size	34	36	38	40	42	44	46	48	50	52
Inches	21 1/4	22 7/8	24 3/8	26	27 1/2	29 1/8	30 3/4	32 1/4	33 7/8	35 3/8

3. Elastic, 2.5 cm wide, for hem casing (cut into two equal pieces), in centimeters:

Height, cm	Size									
	34	36	38	40	42	44	46	48	50	52
1 (154–160)	54	54.8	55.6	56.4	57.2	58	58.8	59.4	60.2	61
2 (162–168)	54.6	55.4	56.2	57	57.8	58.6	59.4	60	60.8	61.6
3 (170–176)	55.2	56	56.8	57.6	58.4	59.2	60	60.6	61.4	62.2
4 (178–184)	55.8	56.6	57.4	58.2	59	59.8	60.6	61.2	62	62.8

Elastic, 1" wide, for hem casing (cut into two equal pieces), in inches:

Height, ft	Size									
	34	36	38	40	42	44	46	48	50	52
1 (5'1"–5'3")	21 1/4	21 5/8	21 7/8	22 1/4	22 1/2	22 7/8	23 1/8	23 3/8	23 3/4	24
2 (5'4"–5'6")	21 1/2	21 3/4	22 1/8	22 1/2	22 3/4	23 1/8	23 3/8	23 5/8	23 7/8	24 1/4
3 (5'7"–5'9")	21 3/4	22	22 3/4	22 5/8	23	23 1/4	23 5/8	23 7/8	24 1/8	24 1/4
4 (5'10"–6'1")	22	22 1/4	22 5/8	22 7/8	23 1/4	23 1/2	23 7/8	24 1/8	24 3/8	24 3/4

Important! If the needle leaves visible holes in the fabric (sweater knits, etc.), we recommend making a toile first in order to check the fit and evaluate possible issues. In this case, there is no need for a fitting, except to check the lengths. We recommend testing on a scrap of fabric first to see whether your material is prone to be marked by needles.

If one of the pieces ends up longer than the other after basting, do not rush to true them by cutting off the excess or stretching the shorter piece. First make sure that the notches are properly matched, lay the pieces on a flat surface and try to re-baste them together. If the pieces still don't match in length because they have stretched or there has been a cutting mistake, you can always true the pieces after the fitting, during the construction of the garment.

After assembling the garment, press it lightly and press the seam allowances either to one side or open.

What to look for during fitting?

The left and right sides of the garment should look the same.

Make sure the garment fits properly at the waist and hips. Check the garment length and if the crotch depth is sufficient.

Check the garment balance — the side seams should be vertical.

The garment hem should be parallel to the floor.

Verify the garment length.

Check for fit issues associated with individual features of the body (for example, an asymmetrical figure with hips at different levels, etc.).

Verify the garment volume, there should be enough ease for a comfortable fit.

After the fitting, make changes symmetrically to both sides of the garment; if needed, baste once more for another fitting.



Place the front leg and pocket bag right sides together, align the edges at the pocket opening, pin and machine-sew, backstitching at the beginning and end.