

FROM THE FOUNDER OF THE #VIKISEWS BRAND

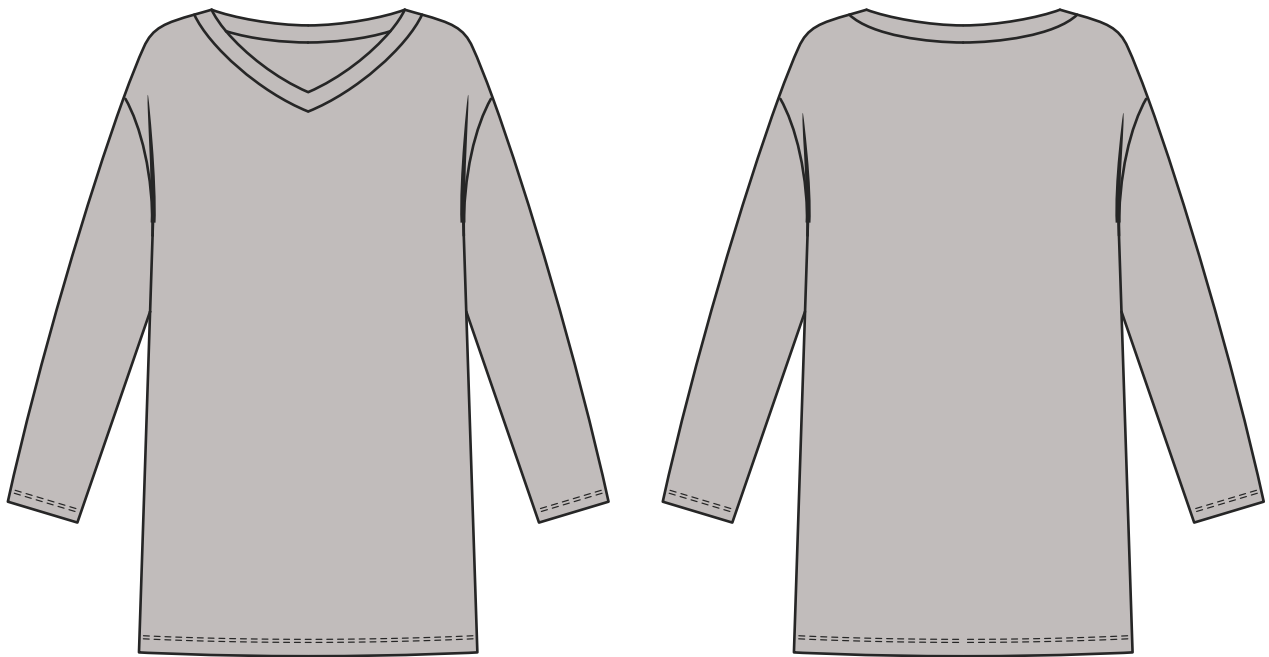


Back in 2016, when I was working on my first set of sewing instructions, I was trying to write them in such a way that even a complete beginner could easily understand and use them to create their very first garment. These instructions laid the foundation for the Vikisews brand, its vision and its mission. I wanted to create modern patterns with the utmost detailed and clear instructions.

Now, with each new collection we are constantly improving our instructions, amending them and adding more relevant details. By the time the final product reaches you, our drafters, correctors, and editors would have spent weeks perfecting every word and every photograph. If you compile a few of our instructions together, you will get a sewing manual that will assist you in sewing all kinds of garments at any difficulty level.

And I would be very happy if these instructions helped you to turn your hobby into a lifelong passion... Enjoy the process! Create your ultimate dream wardrobe! Wear your garments proudly for years to come!

If you have any questions, please contact us at info@vikisews.com - we are always there to help.



RUTA PATTERN DESCRIPTION

Ruta is a comfy, loose-fitting, straight-cut sweater with an extended shoulder line and long, set-in shirt sleeves. The boatneck is slightly V-shaped at the center front and finished with a neckband. The sweater is mid-hip length.



IMPORTANT!

The contents of this pattern are copyright protected and belong exclusively to Vikisews. You may use Vikisews patterns for personal use. It is prohibited to share Vikisews patterns and instructions with third parties, as well as to publish patterns and instructions online for public access. According to part 1 of clause 1252 and clause 1301 of the Civil Code of the Russian Federation, failure to comply with the mentioned rules constitutes a breach of the legislation in force in the field of copyright and entails liability of the violator. Illegal use or distribution will be prosecuted in accordance with legislation.

You may use Vikisews patterns for commercial use, to sew custom-made garments and/or create fashion collections, on the condition that the patterns are solely used in a manufacturing setting and are not further shared with individuals.

TOTAL EASE ALLOWANCE

Size	Bust ease, cm	Waistline ease, cm	Hipline ease, cm	Upper arm ease, cm
XS (32–34) – S (36–38)	19	27	13	13
M (40–42)	15	25	13	10
L (44–46)	13	22	9	10
XL (48–50)	10	20	7	10

Size	Bust ease, in	Waistline ease, in	Hipline ease, in	Upper arm ease, in
XS (32–34) – S (36–38)	7 1/2	10 5/8	5 1/8	5 1/8
M (40–42)	5 7/8	9 7/8	5 1/8	3 7/8
L (44–46)	5 1/8	8 5/8	3 1/2	3 7/8
XL (48–50)	3 7/8	7 7/8	2 3/4	3 7/8

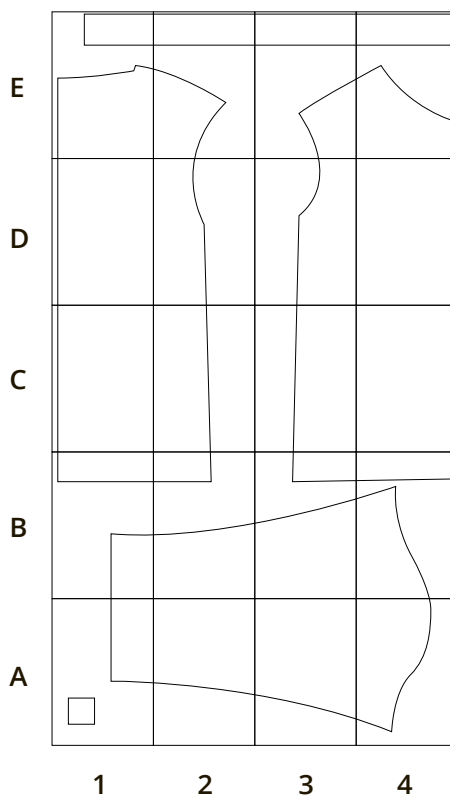
GARMENT LENGTH, SLEEVE LENGTH

Height, cm	Garment length at center back, cm	Sleeve length including shoulder width, cm
1 (154–160)	66	67 +/- 2
2 (162–168)	68	71 +/- 2
3 (170–176)	70	75 +/- 2
4 (178–184)	72	79 +/- 2

Height, ft	Garment length at center back, in	Sleeve length including shoulder width, in
1 (5'1"–5'3")	26	26 3/8 +/- 3/4
2 (5'4"–5'6")	26 3/4	28 +/- 3/4
3 (5'7"–5'9")	27 1/2	29 1/2 +/- 3/4
4 (5'10"–6'1")	28 3/8	31 1/8 +/- 3/4

PRINTED PATTERN LAYOUT

A4 FORMAT



PATTERN PIECES LIST

1. From main fabric:

- front – cut 1 on fold
- back – cut 1 on fold
- sleeve – cut 2
- neckband – cut 1

IMPORTANT! Don't forget to transfer all pattern markings and notches onto the fabric.



Press and steam the seams. To do so, press the seams flat, and then press the seam allowances towards the front on a tailor's board.



Fold the neckband piece in half lengthwise, right side out.

Shape the neckband piece as a circle by pressing, stretching the long raw edge with the iron and shrinking out the fold, as shown in the photo.

