

FROM THE FOUNDER OF THE #VIKISEWS BRAND

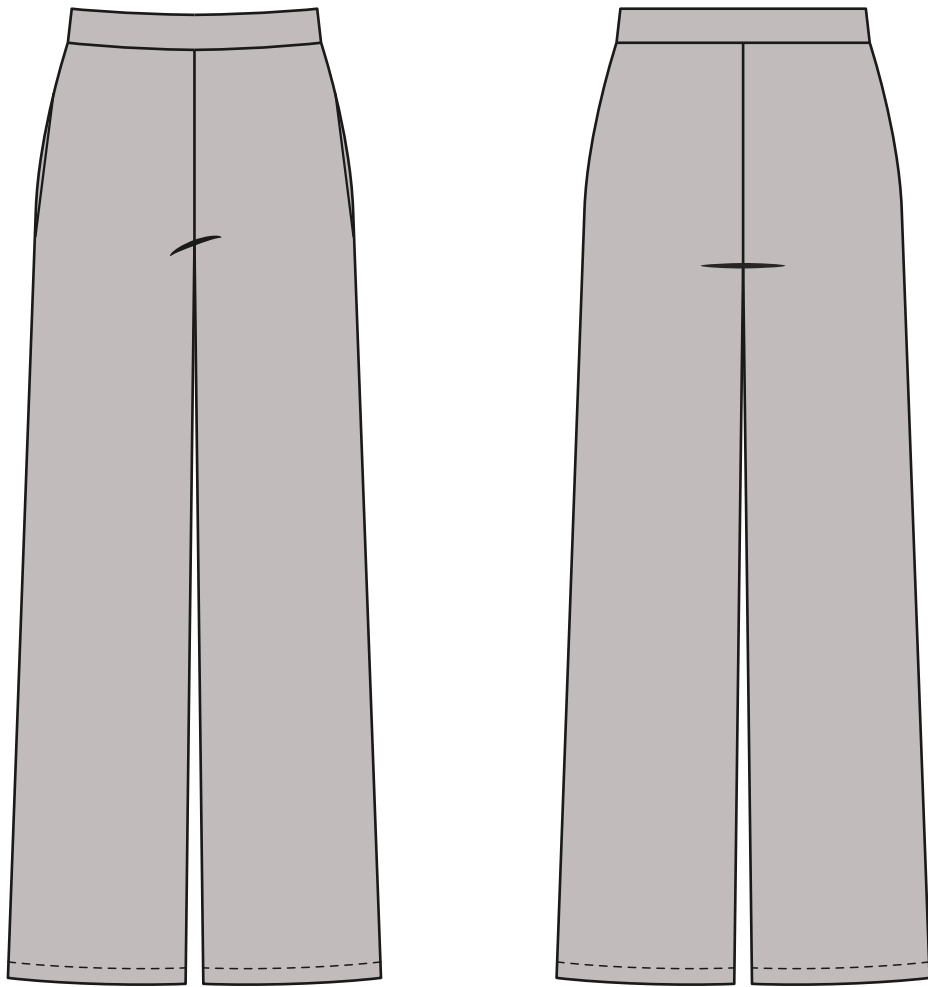


Back in 2016, when I was working on my first set of sewing instructions, I was trying to write them in such a way that even a complete beginner could easily understand and use them to create their very first garment. These instructions laid the foundation for the Vikisews brand, its vision and its mission. I wanted to create modern patterns with the utmost detailed and clear instructions.

Now, with each new collection we are constantly improving our instructions, amending them and adding more relevant details. By the time the final product reaches you, our drafters, correctors, and editors would have spent weeks perfecting every word and every photograph. If you compile a few of our instructions together, you will get a sewing manual that will assist you in sewing all kinds of garments at any difficulty level.

And I would be very happy if these instructions helped you to turn your hobby into a lifelong passion... Enjoy the process! Create your ultimate dream wardrobe! Wear your garments proudly for years to come!

If you have any questions, please contact us at info@vikisews.com - we are always there to help.



RUTA PATTERN DESCRIPTION

Ruta is a pair of drapey, comfy, semi-fitted straight-cut pants featuring pockets in the side seams and an elasticated waistband. The pants are floor length.



IMPORTANT!

The contents of this pattern are copyright protected and belong exclusively to Vikisews. You may use Vikisews patterns for personal use. It is prohibited to share Vikisews patterns and instructions with third parties, as well as to publish patterns and instructions online for public access. According to part 1 of clause 1252 and clause 1301 of the Civil Code of the Russian Federation, failure to comply with the mentioned rules constitutes a breach of the legislation in force in the field of copyright and entails liability of the violator. Illegal use or distribution will be prosecuted in accordance with legislation.

You may use Vikisews patterns for commercial use, to sew custom-made garments and/or create fashion collections, on the condition that the patterns are solely used in a manufacturing setting and are not further shared with individuals.

TOTAL EASE ALLOWANCE

	Waistline ease	Hipline ease
cm	12	5
inches	4 3/4	2

GARMENT LENGTH

Height, cm	Side seam length including waistband, cm	Height, ft	Side seam length including waistband, in
1 (154–160)	102	1 (5'1"–5'3")	40 1/8
2 (162–168)	105	2 (5'4"–5'6")	41 3/8
3 (170–176)	108	3 (5'7"–5'9")	42 1/2
4 (178–184)	111	4 (5'10"–6'1")	43 3/4

SUGGESTED FABRIC

To sew these pants, choose sweater knit fabrics with the following properties:

- medium weight, soft, opaque, with good drape, stretchy or low-stretch
- the fiber content can include natural fibers (wool, cotton, silk), blends (wool + polyester, cotton + elastane), artificial fibers (viscose), and synthetics (polyester, polyester + elastane)

For the pocket lining, we recommend light-weight knit fabrics: jersey knits, interlock knits.

The pants in the photo are made of soft sweater knit. The fiber content is wool + polyester. The pocket bag is made of jersey knit. The fiber content is cotton.

TOOLS AND EQUIPMENT

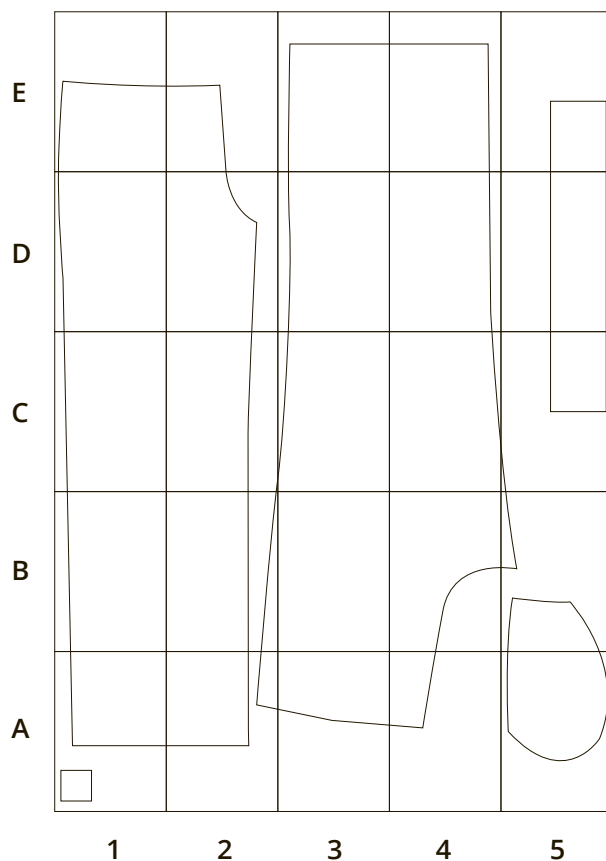
- overlocker for finishing raw edges and construction (this may be replaced with a zigzag stitch or a stretch overlock stitch on the sewing machine)
- sewing machine for joining small pieces
- coverstitch / coverlock machine for finishing the garment hem and sleeve hem edges (this may be replaced with a twin needle on the sewing machine)

Important!

We recommend using specialty ballpoint needles when sewing knits on a domestic sewing machine. When sewing, a ball-shaped needle point pushes the knit loops apart without piercing the threads.

PRINTED PATTERN LAYOUT

A4 FORMAT



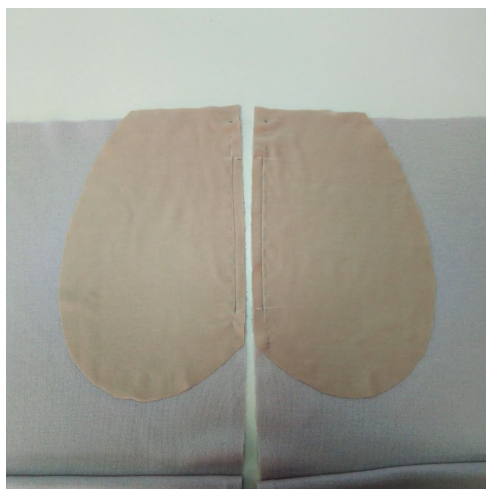
If one of the pieces ends up longer than the other after basting, do not rush to true them by cutting off the excess. First make sure that the notches are properly matched, lay the pieces on a flat surface and try to re-baste them together. If the pieces still don't match (i.e., they have stretched or there has been a cutting mistake), you can always true the pieces after the fitting as you sew.

After assembling the garment, press it lightly and press the seam allowances either to one side or open.

What to look for during fitting?

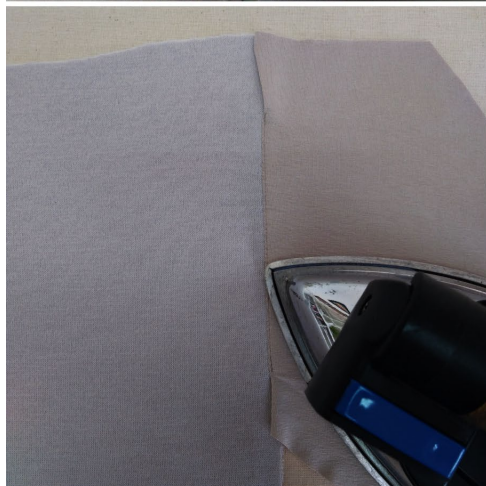
The left and right sides of the garment should look the same.

After the fitting, make changes symmetrically to both sides of the garment; if needed, baste once more for another fitting.



Place the pocket bag and the front leg right sides together, aligning the pocket opening edges and the notches. Baste and machine-stitch the pocket bag to the front leg. Backstitch at the beginning and end.

Press and steam the seam. To do so, press the seam flat.



Fold the pocket bag towards the seam allowance. Understitch the seam allowance, sewing along the right side of the pocket bag at 1-2 mm from the seam. Press flat.



Clip into the seam allowance at the top and bottom of the pocket opening, stopping 2 mm away from the seam.