

# FROM THE FOUNDER OF THE #VIKISEWS BRAND

---

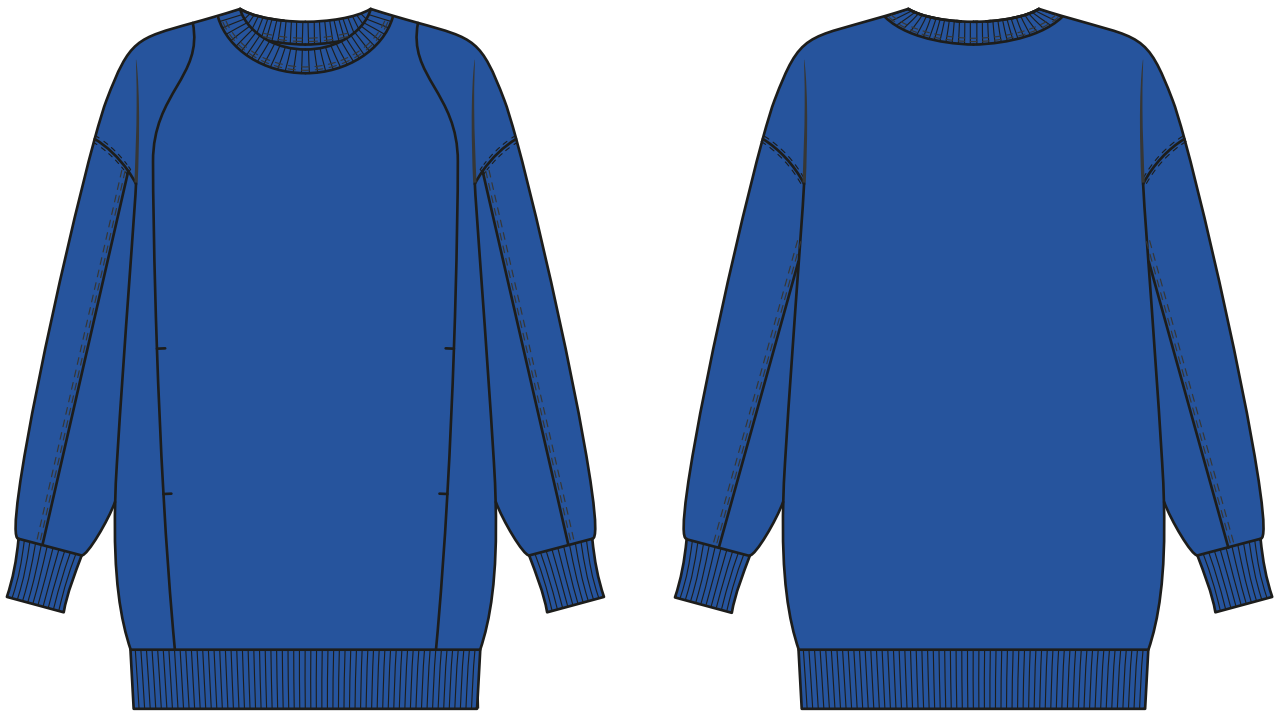


Back in 2016, when I was working on my first set of sewing instructions, I was trying to write them in such a way that even a complete beginner could easily understand and use them to create their very first garment. These instructions laid the foundation for the Vikisews brand, its vision and its mission. I wanted to create modern patterns with the utmost detailed and clear instructions.

Now, with each new collection we are constantly improving our instructions, amending them and adding more relevant details. By the time the final product reaches you, our drafters, correctors, and editors would have spent weeks perfecting every word and every photograph. If you compile a few of our instructions together, you will get a sewing manual that will assist you in sewing all kinds of garments at any difficulty level.

And I would be very happy if these instructions helped you to turn your hobby into a lifelong passion... Enjoy the process! Create your ultimate dream wardrobe! Wear your garments proudly for years to come!

If you have any questions, please contact us at [info@vikisews.com](mailto:info@vikisews.com) - we are always there to help.



## MEG PATTERN DESCRIPTION

---

Meg is an oversized, straight-cut sweatshirt. The front features shaped princess seams with pockets hidden inside them. The sweatshirt has dropped shoulders and shirt sleeves with two decorative seams. The cuffs, waistband, and neckband are made of ribbing. There is decorative topstitching along the sleeve and shoulder seams, as well as along the upper part of the sleeve cap. Meg is below-hip length.



## IMPORTANT!

---

The contents of this pattern are copyright protected and belong exclusively to Vikisews. You may use Vikisews patterns for personal use. It is prohibited to share Vikisews patterns and instructions with third parties, as well as to publish patterns and instructions online for public access. According to part 1 of clause 1252 and clause 1301 of the Civil Code of the Russian Federation, failure to comply with the mentioned rules constitutes a breach of the legislation in force in the field of copyright and entails liability of the violator. Illegal use or distribution will be prosecuted in accordance with legislation.

You may use Vikisews patterns for commercial use, to sew custom-made garments and/or create fashion collections, on the condition that the patterns are solely used in a manufacturing setting and are not further shared with individuals.

# TOTAL EASE ALLOWANCE

---

	Bust ease	Waistline ease	Hipline ease	Upper arm ease
cm	42.2	60.9–61.2	32.5	24.5
inches	16 5/8	24–24 1/8	12 3/4	9 5/8

# GARMENT LENGTH, SLEEVE LENGTH

---

The garment length is measured at the center back and includes the width of the waistband and neckband. The sleeve length is measured including shoulder and cuff width.

Height, cm	Garment length, cm	Sleeve length, cm
1 (154–160)	73.8	74.1–75.5
2 (162–168)	76.8	76.1–77.5
3 (170–176)	79.8	78–79.2
4 (178–184)	82.8	80–81.5
Height, ft	Garment length, in	Sleeve length, in
1 (5'1"–5'3")	29	29 1/8–29 3/4
2 (5'4"–5'6")	30 1/4	30–30 1/2
3 (5'7"–5'9")	31 3/8	30 3/4–31 1/8
4 (5'10"–6'1")	32 5/8	31 1/2–32 1/8

# SUGGESTED FABRIC

---

To sew this garment, choose knit fabrics with the following properties:

- soft, breathable, non-stretch or with very little stretch, medium-weight
- the fiber content can include natural fibers (wool, cotton), artificial fibers (viscose), blends (wool + polyester, cotton + polyester, cotton + elastane, etc.), and synthetics (polyester, polyester + elastane)
- the following fabrics are recommended: sweatshirt fleece, thick French terry, ponte di roma.

**Attention!** We do not recommend lightweight sheer fabrics (chiffon, organza, stretch lace).

As an additional material for the waistband, cuffs, and neckband we recommend using rib knits.

The garment in the photo is made of sweatshirt fleece. The fabric is medium-weight, soft, and has very little stretch. The fiber content is a blend of viscose, polyester, and elastane. The waistband, cuffs, and neckband are made of ribbing.

2. Additional fabric (ribbing), 120 cm (47") wide — 0.35 m (3/8 yd).
3. Lining fabric for the pocket bags:  
for sizes 34–40 — 0.25 m (1/4 yd); for sizes 42–46 — 0.3 m (3/8 yd).

***IMPORTANT!** When purchasing fabric, please account for shrinkage and buy 5% more than required.*

4. Two strips of interfacing that are 3.5 cm (1 3/8") wide and 18 cm (7 1/8") long. It may be replaced with premade straight fusible stay tape.
5. Twill tape for stabilizing the neckline — 10–20 cm (4–8").
6. Matching thread — 5 spools (1 spool for the sewing machine + 4 spools for the overlocker).

## TOOLS AND EQUIPMENT

---

- sewing machine for construction
- overlocker for construction and finishing raw edges. This may be replaced with a stretch overlock stitch or a zigzag stitch on the sewing machine (overlock or zigzag stitch width 2–3 mm, stitch length 2.5 mm)
- coverstitch or coverlock machine for topstitching. If you don't have a coverstitch machine, it can be replaced with a twin needle on any regular sewing machine that can do a zigzag stitch.

***IMPORTANT!** We recommend using specialty needles when working with knit fabrics (for example, STRETCH, SUPER STRETCH, JERSEY, etc.). These are ballpoint needles, so they part the threads of the fabric you are stitching rather than piercing them.*



We recommend testing your interfacing and/or fusible stay tape on a scrap of fabric before applying it to the main pieces. Check your iron's temperature and steam settings (check if it's safe to use steam on your main fabric). Check how long it takes for the interfacing to bond.

**Partially interface the following pieces:**

- pocket seam allowance on the center front piece. The interfacing strips should be cut following the grainline on the garment (parallel to the pocket opening).

To interface, put the gluey side of the interfacing onto the wrong side of the fabric piece (or a section thereof) and press with the iron. Do not iron the piece, but instead press it section by section, holding it down with the iron for a few seconds until that section is adhered and then pressing down the next section. You may use a cotton pressing cloth to protect your iron sole. Once the interfacing is fused, leave the piece on a hard flat surface for 15 minutes for it to cool down.



Working on the right side, overlock the straight edge of the pocket bag made of the main fabric, as well as the pocket seam allowance on the side front pieces.

Press and steam the seam.



Place the pocket bag made of the lining fabric right sides together with the center front piece. Place the pocket bag made of the main fabric right sides together with the side front piece. Align along the pocket seam allowance edges and match all the notches. Pin and, if necessary, hand-baste. Stitch the pocket bag made of the main fabric on the sewing machine, backstitching at the beginning and end of the seam. Stitch the pocket bag made of the lining fabric on the overlocker. Press.