

FROM THE FOUNDER OF THE #VIKISEWS BRAND



Back in 2016, when I was working on my first set of sewing instructions, I was trying to write them in such a way that even a complete beginner could easily understand and use them to create their very first garment. These instructions laid the foundation for the Vikisews brand, its vision and its mission. I wanted to create modern patterns with the utmost detailed and clear instructions.

Now, with each new collection we are constantly improving our instructions, amending them and adding more relevant details. By the time the final product reaches you, our drafters, correctors, and editors would have spent weeks perfecting every word and every photograph. If you compile a few of our instructions together, you will get a sewing manual that will assist you in sewing all kinds of garments at any difficulty level.

And I would be very happy if these instructions helped you to turn your hobby into a lifelong passion... Enjoy the process! Create your ultimate dream wardrobe! Wear your garments proudly for years to come!

If you have any questions, please contact us at info@vikisews.com - we are always there to help.



CAROL PATTERN DESCRIPTION

Carol is a semi-fitted, straight-cut sweater. It has long, set-in, drop-shoulder sleeves. The round neckline is finished with a neckband. Carol is hip-length.



IMPORTANT!

The contents of this pattern are copyright protected and belong exclusively to Vikisews. You may use Vikisews patterns for personal use. It is prohibited to share Vikisews patterns and instructions with third parties, as well as to publish patterns and instructions online for public access. According to part 1 of clause 1252 and clause 1301 of the Civil Code of the Russian Federation, failure to comply with the mentioned rules constitutes a breach of the legislation in force in the field of copyright and entails liability of the violator. Illegal use or distribution will be prosecuted in accordance with legislation.

You may use Vikisews patterns for commercial use, to sew custom-made garments and/or create fashion collections, on the condition that the patterns are solely used in a manufacturing setting and are not further shared with individuals.

TOTAL EASE ALLOWANCE

	Bust ease	Waistline ease	Hipline ease	Upper arm ease
cm	8	28.1	2.2	6
inches	3 1/8	11 1/8	7/8	2 3/8

GARMENT LENGTH, SLEEVE LENGTH

Height, cm	Back length, cm	Sleeve length including shoulder width, cm
1 (154–160)	58.5–59.6	67.8–69.9
2 (162–168)	61.5	69.8–71.9
3 (170–176)	64.5	71.8–73.9
4 (178–184)	67.5	73.8–75.9

Height, ft	Back length, in	Sleeve length including shoulder width, in
1 (5'1"–5'3")	23–23 1/2	26 3/4–27 1/2
2 (5'4"–5'6")	24 1/4	27 1/2–28 1/4
3 (5'7"–5'9")	25 3/8	28 1/4–29 1/8
4 (5'10"–6'1")	26 5/8	29–29 7/8

SUGGESTED FABRIC

To sew this sweater, choose knit fabrics with the following properties:

- soft, stretchy, medium-weight, smooth or textured
- the fiber content can include natural fibers (wool, cotton, silk), artificial fibers (acrylic, viscose), blends (wool + polyester, cotton + polyester, cotton + elastane, wool + elastane, etc.), and synthetics (polyester, polyester + elastane, polyester + acrylic)
- the following fabrics are recommended: sweater knits, angora, soft double knits.

Attention! We do not recommend lightweight, sheer, very stretchy fabrics.

The garment in the photos is made of sweater knit. The fabric is medium-weight, soft, and stretchy. The fiber content is wool + elastane.

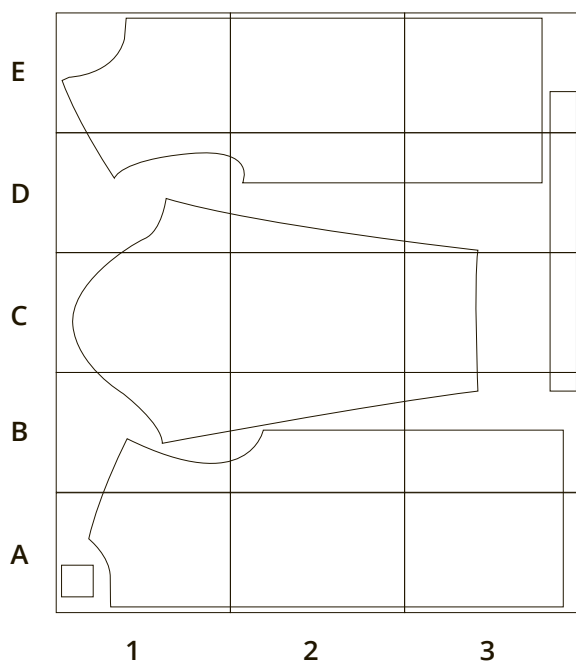
TOOLS AND EQUIPMENT

- sewing machine for construction
- overlocker for construction and finishing raw edges. It can be replaced with a stretch overlock stitch or a zigzag stitch on the sewing machine (overlock or zigzag stitch width 2–3 mm, stitch length 2.5 mm)
- coverstitch or coverlock machine for finishing the garment hem and sleeve hems. If you don't have a coverstitch machine, it can be replaced with a twin needle on any regular sewing machine that can do a zigzag stitch.

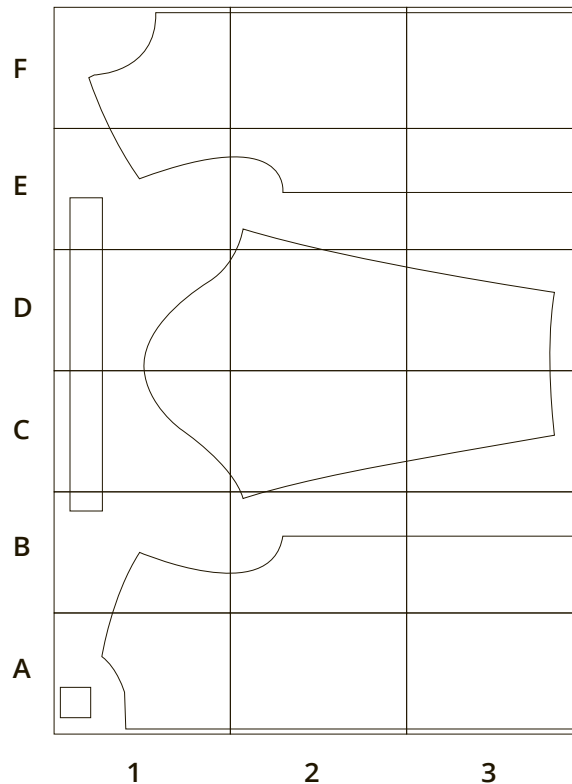
IMPORTANT! We recommend using specialty needles when working with knit fabrics (for example, *STRETCH*, *SUPER STRETCH*, *JERSEY*, etc.). These are ballpoint needles, so they part the threads of the fabric you are stitching rather than piercing them.

PRINTED PATTERN LAYOUT A4 FORMAT

Sizes 34–42



Sizes 44–52





Place the front and back pieces right sides together. Align the shoulder and side seam edges, match the notches.

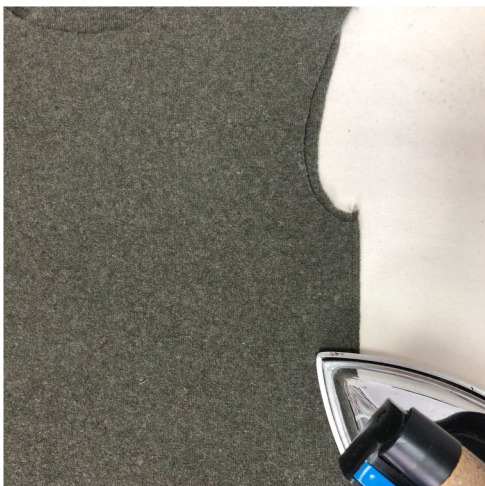
Pin, baste, and stitch on the overlocker, keeping the back piece facing up. The overlock stitch width is 7 mm (just over 1/4"), so 3 mm (1/8") will be trimmed off the edge.



Press the shoulder seam flat.



Press the seam allowance toward the front.



Press the side seam flat.