

# FROM THE FOUNDER OF THE #VIKISEWS BRAND

---

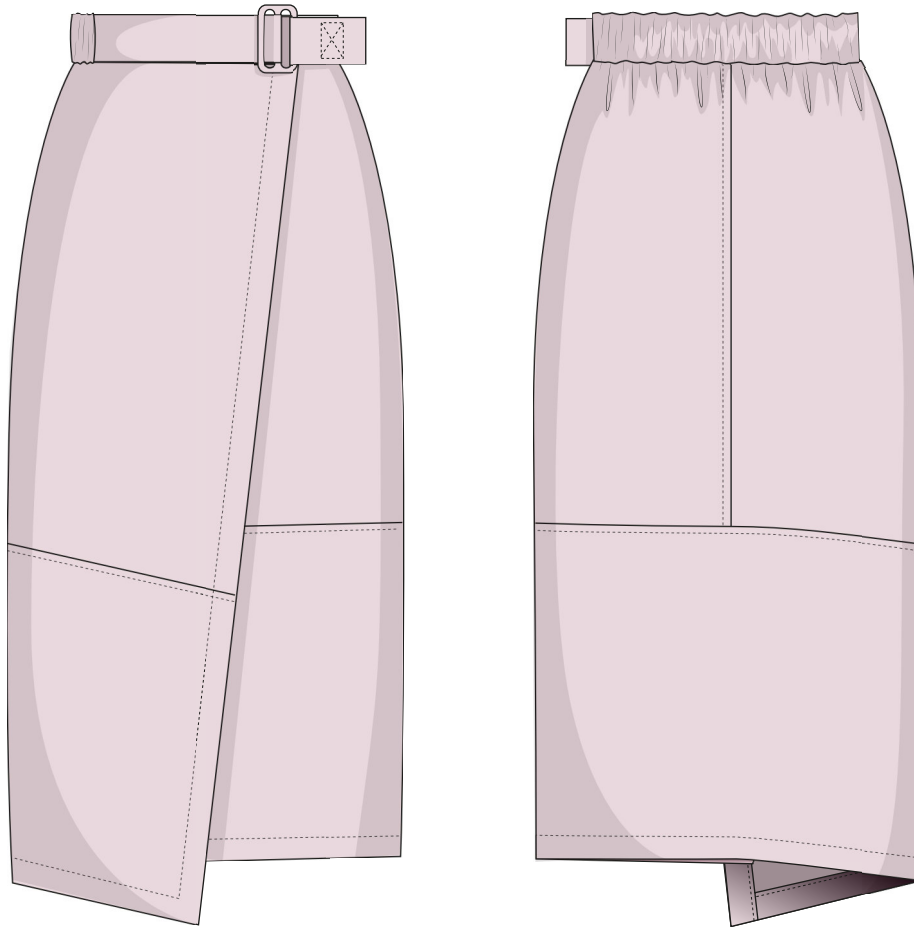


Back in 2016, when I was working on my first set of sewing instructions, I was trying to write them in such a way that even a complete beginner could easily understand and use them to create their very first garment. These instructions laid the foundation for the Vikisews brand, its vision and its mission. I wanted to create modern patterns with the utmost detailed and clear instructions.

Now, with each new collection we are constantly improving our instructions, amending them and adding more relevant details. By the time the final product reaches you, our drafters, correctors, and editors would have spent weeks perfecting every word and every photograph. If you compile a few of our instructions together, you will get a sewing manual that will assist you in sewing all kinds of garments at any difficulty level.

And I would be very happy if these instructions helped you to turn your hobby into a lifelong passion... Enjoy the process! Create your ultimate dream wardrobe! Wear your garments proudly for years to come!

If you have any questions, please contact us at [info@vikisews.com](mailto:info@vikisews.com) - we are always there to help.



## VILORA PATTERN DESCRIPTION

---

Vilora is a semi-fitted wrap skirt with a straight silhouette. It features an asymmetrical horizontal design line below the hip on both the front and back panels. The back of the skirt has a center seam in the top section. The asymmetry of the skirt is emphasized by the angled edge on the right side and the longer hemline which extends from the center to the side seam. Vilora has a waistband with an elasticated section in the back. The left front waistband features a belt which fastens with a buckle and thus secures the waistband at the waist. The top of the waistband sits at the natural waistline. The skirt fastens with Velcro. Topstitching is featured along the center seam of the back panel, the asymmetrical design line, the front edge, and along the hem of the garment.



## IMPORTANT!

---

The contents of this pattern are copyright protected and belong exclusively to VikiSews. You may use VikiSews patterns for personal use. It is prohibited to share VikiSews patterns and instructions with third parties, as well as to publish patterns and instructions online for public access. According to part 1 of clause 1252 and clause 1301 of the Civil Code of the Russian Federation, failure to comply with the mentioned rules constitutes a breach of the legislation in force in the field of copyright and entails liability of the violator. Illegal use or distribution will be prosecuted in accordance with legislation.

You may use VikiSews patterns for commercial use, to sew custom-made garments and/or create fashion collections, on the condition that the patterns are solely used in a manufacturing setting and are not further shared with individuals.

# TOTAL EASE ALLOWANCE

	Waistline ease	Hipline ease
cm	0.2	5.6–5.7
inches	1/8	2 1/4

# GARMENT LENGTH

Height, cm	Garment length at center back including waistband, cm	Height, ft	Garment length at center back including waistband, in
1 (154–160)	70.4	1 (5'1"–5'3")	27 3/4
2 (162–168)	73.4	2 (5'4"–5'6")	28 7/8
3 (170–176)	76.4	3 (5'7"–5'9")	30 1/8
4 (178–184)	79.4	4 (5'10"–6'1")	31 1/4

# ELASTIC LENGTH

Size	34	36	38	40	42	44	46	48	50	52
Elastic length, cm	36.2	38.1	40	41.9	43.8	45.7	47.6	49.2	50.8	52.4
Elastic length, in	14 1/4	15	15 3/4	16 1/2	17 1/4	18	18 3/4	19 3/8	20	20 5/8

# SUGGESTED FABRIC

To sew this skirt, choose woven fabrics with the following properties:

- Medium weight, structured, breathable, soft, non-stretch or with very little stretch, opaque
- The fiber content can include natural fibers (wool, silk, cotton, linen), artificial (viscose), blends (wool + silk, cotton + polyester, cotton + viscose, etc.), and synthetic fibers (polyester, polyester + elastane)
- The following fabrics are recommended: dress-weight or suiting wool, gabardine, denim, micro-corduroy, faux leather, cotton suiting, linen suiting

**Attention!** We do not recommend stretchy knit materials and lightweight sheer fabrics (chiffon, organza, stretch lace).

The skirt in the photo is made of denim fabric. This fabric is medium weight, soft, structured, and has very little stretch. The fiber content is 100% cotton.

# TOOLS AND EQUIPMENT

---

- Sewing machine for construction
- Overlocker for finishing raw edges. This may be replaced with a stretch overlock stitch or a zigzag stitch on the sewing machine (overlock or zigzag stitch width 2-3mm, stitch length 2.5mm)
- Stitch-in-the-ditch foot for your sewing machine (optional)
- Bodkin for threading elastic through a channel (may be replaced with a safety pin)

# PATTERN PIECES LIST

---

## 1. From main fabric:

- Top right back - cut 1
- Top left back - cut 1
- Bottom back - cut 1
- Top left front - cut 1
- Bottom left front - cut 1
- Top right front - cut 1
- Bottom right front - cut 1
- Back waistband - cut 1
- Large right front waistband - cut 1
- Small right front waistband - cut 1
- Buckle strap - cut 1
- Left front waistband - cut 1
- Belt - cut 1
- Right front facing - cut 1
- Left front facing - cut 1

*IMPORTANT! Don't forget to transfer all pattern markings and notches onto the fabric.*

## 2. From interfacing:

- Right front facing – cut 1
- Left front facing – cut 1
- Left front waistband – cut 1
- Large right front waistband – cut 1
- Small right front waistband – cut 1

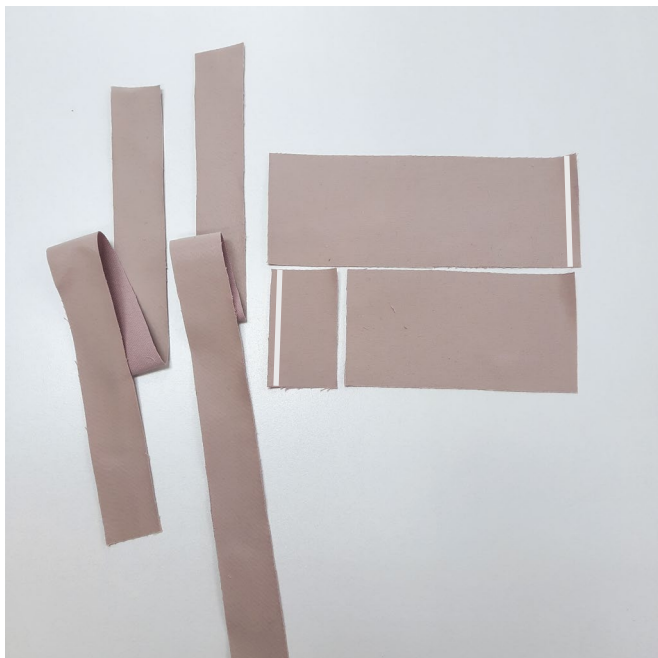
# SEAM ALLOWANCES

---

The pattern pieces include the following seam allowances:

- Garment hem — 3.7 cm (1 1/2")
- All other edges — 1 cm (3/8")

Take this into account when laying out pattern pieces on the fabric.



Prior to interfacing the main garment pieces, we recommend to test and interface and/or apply fusible stay tape to a scrap piece of the main material. Also check your iron settings: what temperature suits your fabric, can the interfacing be applied with steam, as well as the time needed to hold the iron over the interfacing for perfect adhesion.

**Fully interface the following pieces:**

- Right front facing – 1 piece
- Left front facing – 1 piece
- Left front waistband – 1 piece
- Large right front waistband – 1 piece
- Small right front waistband – 1 piece

To interface, put the gluey side of the interfacing on top of the wrong side of the fabric piece (or a section thereof) and press with the iron. Do not iron the piece, but instead press it section by section, holding it down with the iron a few seconds until that section is adhered and then pressing down the next section. You may use a cotton pressing cloth to protect your iron sole. Once the interfacing process complete, leave the piece on a hard flat surface for 15 minutes for it to cool down.



**Interface the following edges with straight-grain fusible stay tape:**

- Small right front waistband, side edge
- Left front waistband, side edge
- Top left front, center edge
- Bottom left front, center edge
- Top right front, center edge
- Bottom right front, center edge

The stay tape is fused at 8 mm from the edge, parallel to it. The length of the tape is equal to the length of the distance to be reinforced.

Hand-baste a running stitch along center front lines on all the front pieces. Basting should be done with light-colored thread in order to avoid staining the fabric during pressing and steaming. Transfer the Velcro markings from the pattern piece to the large right front waistband piece using chalk or soap.