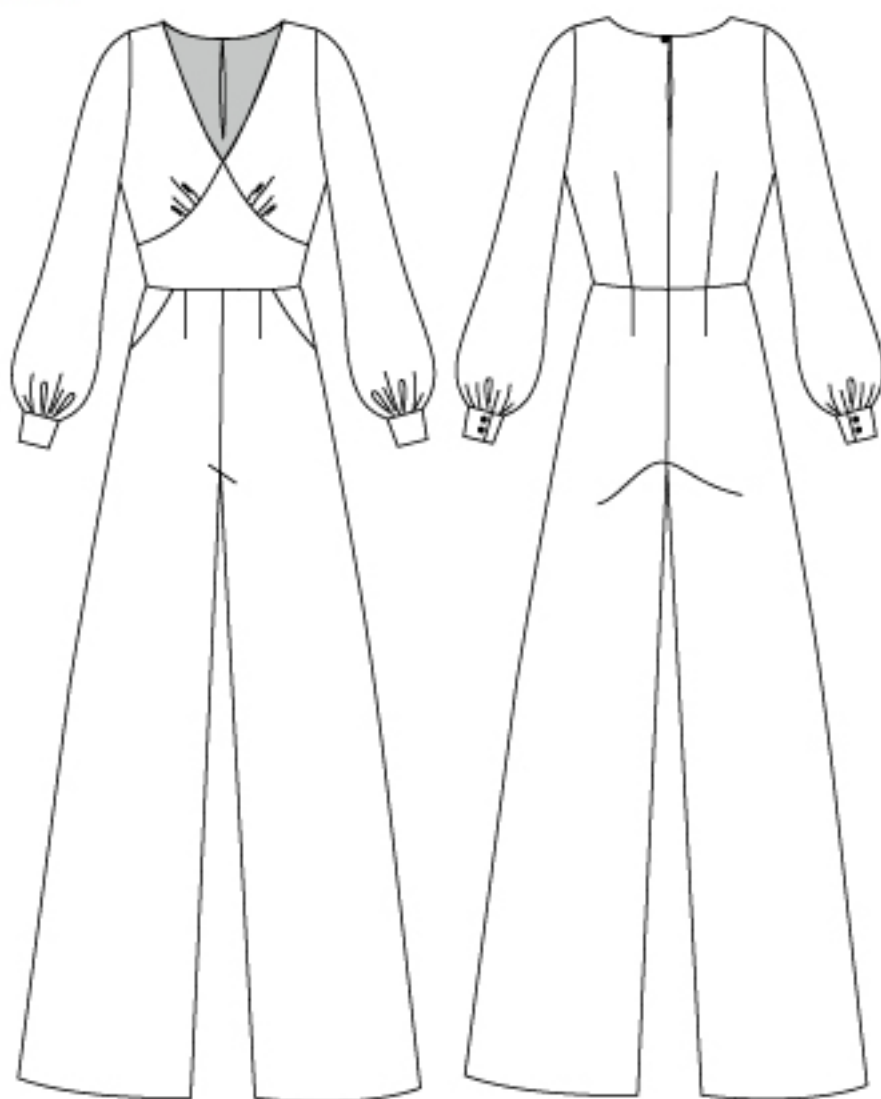


Sew Love PATTERNS

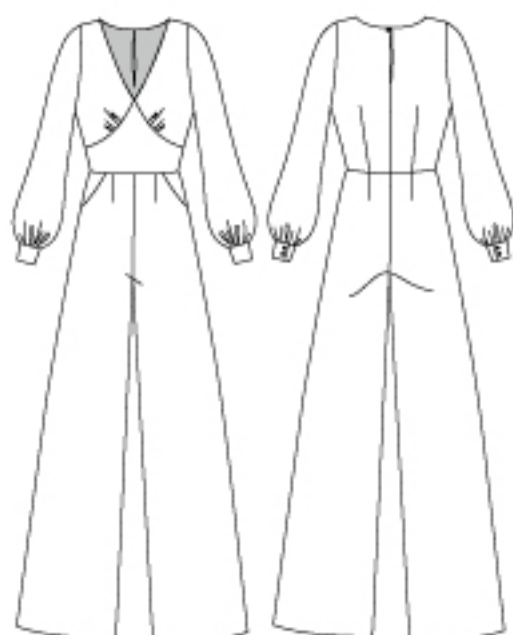


Springe Jumpsuit Sleeve Extension

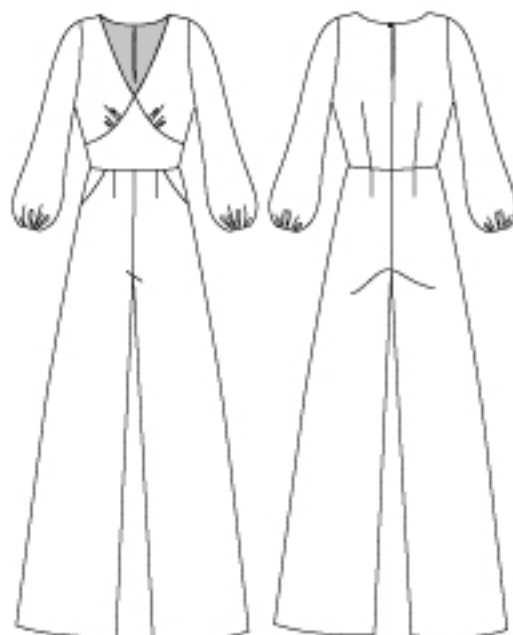
SIZES A - H
INTERMEDIATE SEWING LEVEL



About the 'Springe' Jumpsuit Sleeve Extension



Version A - Full Length Sleeve with Buttoned Cuff



Version B - Bracelet Length Sleeve with Elastic Cuff

GARMENT OVERVIEW

The Springe Jumpsuit Sleeve Extension is an add on to the original Springe Jumpsuit, so you will need the original pattern to complete the extension. It has two different sleeve versions. Version A is a full length set-in bell sleeve, that gathers into a buttoned cuff. Version B is the same set-in bell sleeve, that gathers into an elastic cuff at bracelet length. Version B is easier to make. Please see the original Springe Jumpsuit Instructions for the size guide, finished garment measurements, suggested fabrics and glossary of terms.

NOTION REQUIREMENTS

As well as the notions required for the original Springe Jumpsuit, you will need:

Sleeve version A: 4 x approx 1.5cm buttons and some iron-on interfacing for the cuff

Sleeve version B: 45 - 55cm of 1-2cm wide elastic

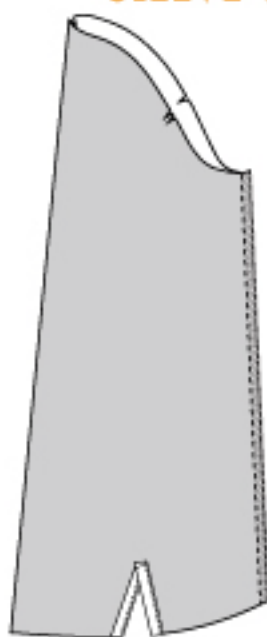
FABRIC REQUIREMENTS FOR THE SLEEVE EXTENSION (Versions A&B)

The following chart shows the fabric requirements for the jumpsuit made with the sleeve extension and is for a cutting layout with directional prints.

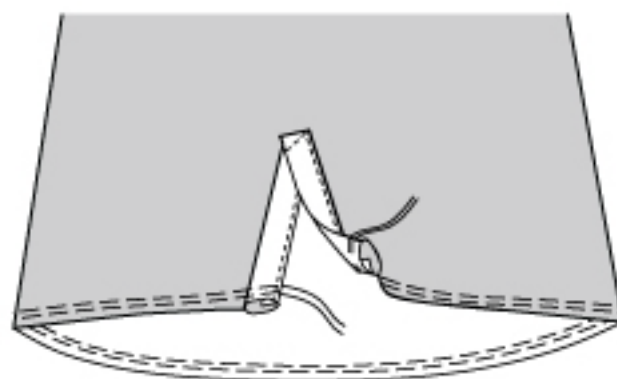
		A	B	C	D	E	F	G	H
140cm wide	Version 1 - Full length trs	3.7m	3.7m	3.7m	3.8m	4.3m	4.3m	4.4m	4.4m
	Version 2 - Cropped trs	3.3m	3.3m	3.3m	3.5m	4m	4m	4.1m	4.1m
	Version 3 - Playsuit	2.7m	2.7m	2.7m	2.8m	3.1m	3.1m	3.2m	3.2m
115cm wide	Version 1 - Full length trs	4.9m	4.9m	4.9m	5m	5.4m	5.4m	5.5m	5.5m
	Version 2 - Cropped trs	4.5m	4.5m	4.5m	4.6m	5m	5m	5.1m	5.1m
	Version 3 - Playsuit	3.5m	3.5m	3.5m	3.6m	4m	4m	4.1m	4.1m
		A	B	C	D	E	F	G	H
55" wide	Version 1 - Full length trs	4yds	4yds	4yds	4.1 yds	4.7yds	4.7yds	4.8 yds	4.8 yds
	Version 2 - Cropped trs	3.6yds	3.6yds	3.6yds	3.8yds	4.3yds	4.3yds	4.4yds	4.4yds
	Version 3 - Playsuit	2.9yds	2.9yds	2.9yds	3yds	3.3yds	3.3yds	3.4yds	3.4yds
45" wide	Version 1 - Full length trs	5.3yds	5.3yds	5.3yds	5.4yds	5.9yds	5.9yds	6yds	6yds
	Version 2 - Cropped trs	4.9yds	4.9yds	4.9yds	5yds	5.4yds	5.4yds	5.5yds	5.5yds
	Version 3 - Playsuit	3.8yds	3.8yds	3.8yds	3.9yds	4.3yds	4.3yds	4.4yds	4.4yds

Sewing Instructions

SLEEVE VERSION A: Attaching the cuff



Step 7a. With the wrong sides together stitch the underarm of the sleeve. Press the seams to one side and then overlock them.



Step 8a. Add two lines of gathering stitch to the hem of the sleeve.



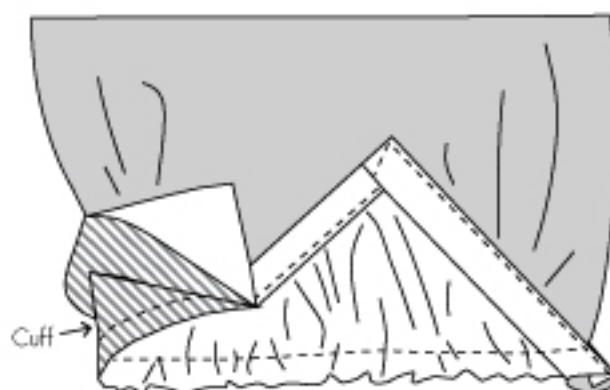
Step 9a. Add iron on interfacing to the sleeve cuff.



Step 10a. Fold the cuff in half lengthways with the right sides together. Stitch along both ends of the cuff.



Step 11a. Trim the corner of the cuffs and then turn them the right side out and press.



Step 12a. Pull the 2 gathering threads at the hem of the sleeve so that it matches the length of the cuff. Attach the right side of the cuff (one layer only) to the wrong side of the sleeve. Make sure that the placket is in place (as in step 6a) and that the gathering is evenly spread. Stitch in place and then remove the 2 gathering threads.