

# FROM THE FOUNDER OF THE #VIKISEWS BRAND

---



Back in 2016, when I was working on my first set of sewing instructions, I was trying to write them in such a way that even a complete beginner could easily understand and use them to create their very first garment. These instructions laid the foundation for the Vikisews brand, its vision and its mission. I wanted to create modern patterns with the most detailed and clear instructions.

Now, with each new collection we are constantly improving our instructions, amending them and adding more relevant details. By the time the final product reaches you, our drafters, correctors, and editors would have spent weeks perfecting every word and every photograph. If you compile a few of our instructions together, you will get a sewing manual that will assist you in sewing all kinds of garments at any difficulty level.

And I would be very happy if these instructions helped you to turn your hobby into a lifelong passion... Enjoy the process! Create your ultimate dream wardrobe! Wear your garments proudly for years to come!

If you have any questions, please contact us at [info@vikisews.com](mailto:info@vikisews.com) - we are always there to help.



## CHRISTIAN PATTERN DESCRIPTION

---

Christian is a men's semi-fitted shirt jacket with a straight silhouette and a slightly dropped shoulder line. The two-piece long shirt sleeve features a slit with a placket down the elbow seam. The sleeves are finished with snapped cuffs. The front pieces have flapped gusset pockets at the chest and single-welt pockets on the sides. The back of the shirt jacket features a yoke. The shirt collar has a collar stand. The garment fastens with snaps at the center front placket. The jacket is insulated and fully lined, has a curved hem and is mid-hip length.



## IMPORTANT!

---

The contents of this pattern are copyright protected and belong exclusively to VikiSews. You may use VikiSews patterns for personal use. It is prohibited to share VikiSews patterns and instructions with third parties, as well as to publish patterns and instructions online for public access. According to part 1 of clause 1252 and clause 1301 of the Civil Code of the Russian Federation, failure to comply with the mentioned rules constitutes a breach of the legislation in force in the field of copyright and entails liability of the violator. Illegal use or distribution will be prosecuted in accordance with legislation.

You may use VikiSews patterns for commercial use, to sew custom-made garments and/or create fashion collections, on the condition that the patterns are solely used in a manufacturing setting and are not further shared with individuals.

# TOTAL EASE ALLOWANCE

---

	Chest ease	Waistline ease	Hipline ease	Upper arm ease
cm	26.7–27.1	36.4–40.5	21.6	14.2–14.5
inches	10 ½–10 5/8	14 3/8–16	8 ½	5 5/8–5 ¾

# GARMENT LENGTH, SLEEVE LENGTH

---

Height, cm	Garment length at center back, cm	Sleeve length including cuff, cm	Height, ft	Garment length at center back, in	Sleeve length including cuff, in
1 (170-176)	75.2	64.5	1 (5'7"–5'9")	29 ½	25 ½
2 (178-184)	78.2	66.5	2 (5'10"–6')	30 ¾	26 ¼
3 (186-192)	81.2	68.5	3 (6'1"–6'3")	32	27
4 (194-200)	84.2	70.5	4 (6'4"–6'7")	33 ¼	27 ¾

# SUGGESTED FABRIC

---

To sew the Christian jacket, choose outerwear fabrics with the following properties:

- Lightweight or medium weight, non-stretch or with very little stretch, opaque, wind-proof and water-resistant
- The fiber content can include natural fibers (cotton), artificial (acetate), blends (cotton + polyester + viscose, etc.), and synthetic (polyester, polyester + elastane, terylene/dacron)
- The following fabrics are recommended: outerwear fabrics, such as gabardine, dewspo, taslan, membrane fabrics, taffeta, jordan, etc.

For the lining, we recommend artificial fibers (viscose), blends (viscose + elastane, viscose + polyester) or synthetic (polyester, polyester + elastane). For the insulation, use polyester batting, such as Thinsulate, alpolux, isosoft 100g/m<sup>2</sup>, etc.

The garment in the photo is made of outerwear fabric. This fabric is medium weight and non-stretch. The fiber content is 100% polyester. The lining fabric is a blend of viscose and polyester. The insulation used is sintepon 100 g/m<sup>2</sup>.

# TOOLS AND EQUIPMENT

---

- Sewing machine for construction
- Stitch-in-the-ditch foot for your sewing machine (optional)
- Snap press machine (optional)

## PATTERN PIECES LIST

---

### 1. From main fabric:

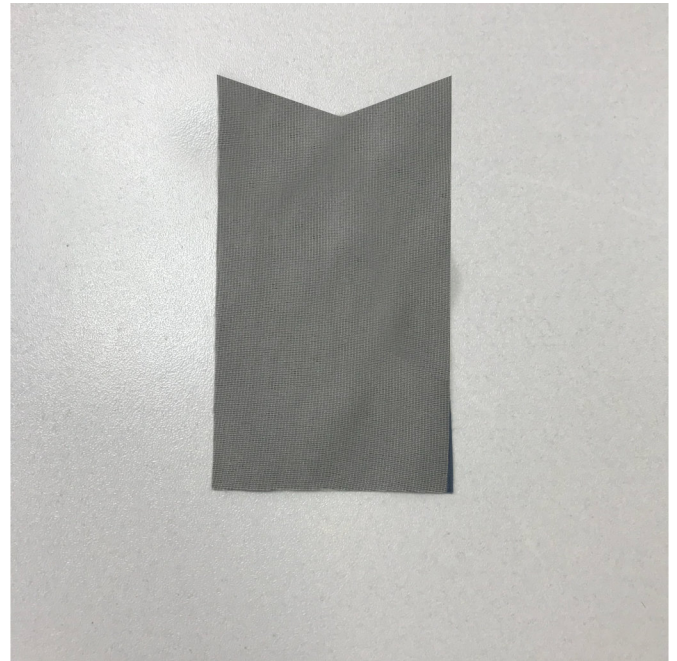
- Front - cut 2
- Placket - cut 2
- Back - cut 1 on fold
- Back yoke - cut 1 on fold
- Top sleeve - cut 2
- Bottom sleeve - cut 2
- Cuff - cut 2
- Sleeve placket - cut 2
- Upper collar - cut 1 on fold
- Undercollar - cut 1 on fold
- Collar stand - cut 2
- Gusset pocket - cut 2
- Pocket gusset - cut 2
- Gusset pocket top flap - cut 2
- Gusset pocket bottom flap - cut 2
- Bottom pocket welt - cut 2
- Bottom pocket bag with grown-on facing - cut 2
- Back hem facing - cut 1 on fold
- Back neck facing - cut 1 on fold
- Front hem facing - cut 2

### 2. From lining fabric:

- Front lining - cut 2
- Back lining - cut 1 on fold
- Top sleeve lining - cut 2
- Bottom sleeve lining - cut 2
- Gusset pocket lining - cut 2
- Gusset lining - cut 2
- Bottom pocket bag - cut 2

**IMPORTANT!** Don't forget to transfer all pattern markings and notches onto the fabric.

Before you apply interfacing to the garment pieces, we recommend applying a piece of the interfacing material and/or fusible seam tape to a scrap of the main fabric for testing. Please also check the iron settings: what temperature suits your fabric, whether or not the interfacing can be applied with steam, and the holding time needed for the interfacing to be fused to the main fabric.



**Fully interface the following pieces:**

- Back neck facing - 1 piece cut on fold
- Front hem facing - 2 pieces
- Back hem facing - 1 piece cut on fold
- Sleeve placket - 1 piece cut on fold



**Partially interface the following pieces:**

- Front - 2 pieces. Interface the gusset pocket and side pocket areas
- Front placket - 2 pieces. Interface the half of the placket facing the outside in the finished garment
- Gusset pocket - 2 pieces. Interface the grown-on pocket facing
- Cuff - 2 pieces. Interface the half of the cuffs facing the outside in the finished garment