

# FROM THE FOUNDER OF THE #VIKISEWS BRAND

---

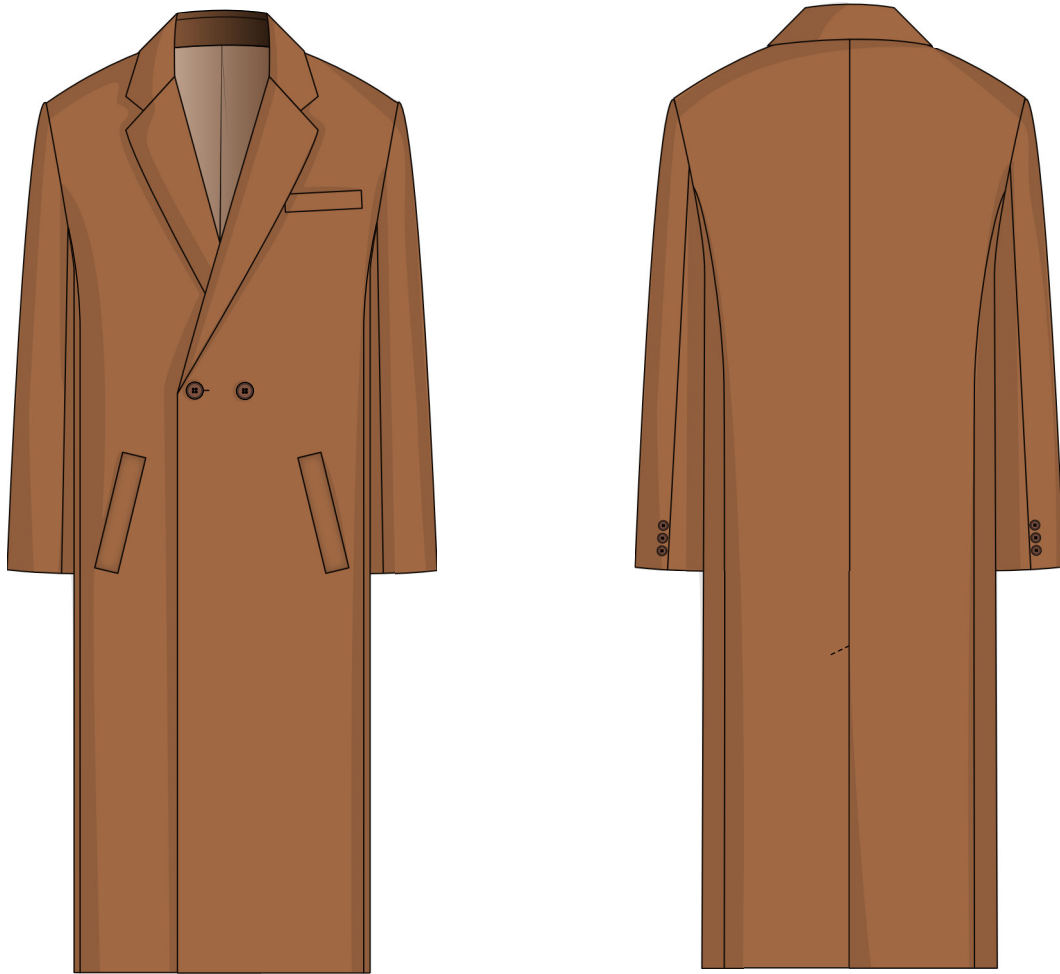


Back in 2016, when I was working on my first set of sewing instructions, I was trying to write them in such a way that even a complete beginner could easily understand and use them to create their very first garment. These instructions laid the foundation for the Vikisews brand, its vision and its mission. I wanted to create modern patterns with the most detailed and clear instructions.

Now, with each new collection we are constantly improving our instructions, amending them and adding more relevant details. By the time the final product reaches you, our drafters, correctors, and editors would have spent weeks perfecting every word and every photograph. If you compile a few of our instructions together, you will get a sewing manual that will assist you in sewing all kinds of garments at any difficulty level.

And I would be very happy if these instructions helped you to turn your hobby into a lifelong passion... Enjoy the process! Create your ultimate dream wardrobe! Wear your garments proudly for years to come!

If you have any questions, please contact us at [info@vikisews.com](mailto:info@vikisews.com) - we are always there to help.



## BERNARD PATTERN DESCRIPTION

---

Bernard is a men's semi-fitted double-breasted coat with a straight silhouette. The coat is designed to be worn in between seasons. The tailored fit is achieved by the side panels with princess seams on the front and back, and the center back seam. The front features two bottom welt pockets and a chest welt pocket on the left side. Long, set-in, two-piece sleeves have faux vents with three buttons on each. The jacket collar with a collar stand is paired with long lapels folded down to the waistline. The coat fastens with two buttons and buttonholes. The center back seam has a vent. The coat is fully-lined and is below-the-knee length.



## IMPORTANT!

---

The contents of this pattern are copyright protected and belong exclusively to VikiSews. You may use VikiSews patterns for personal use. It is prohibited to share VikiSews patterns and instructions with third parties, as well as to publish patterns and instructions online for public access. According to part 1 of clause 1252 and clause 1301 of the Civil Code of the Russian Federation, failure to comply with the mentioned rules constitutes a breach of the legislation in force in the field of copyright and entails liability of the violator. Illegal use or distribution will be prosecuted in accordance with legislation.

You may use VikiSews patterns for commercial use, to sew custom-made garments and/or create fashion collections, on the condition that the patterns are solely used in a manufacturing setting and are not further shared with individuals.

# TOTAL EASE ALLOWANCE

	Chest ease	Waistline ease	Hipline ease	Upper arm ease
cm	24.8	33.4	24.6	10.8
inches	9 3/4	13 1/8	9 5/8	4 1/4

# GARMENT LENGTH, SLEEVE LENGTH

Height, cm	Garment length at center back, cm	Sleeve length, cm	Height, ft	Garment length at center back, in	Sleeve length, in
1 (170-176)	120	65	1 (5'7"-5'9")	47 1/4	25 5/8
2 (178-184)	125	67	2 (5'10"-6')	49 1/4	26 3/8
3 (186-192)	130	69	3 (6'1"-6'3")	51 1/8	27 1/8
4 (194-200)	135	71	4 (6'4"-6'7")	53 1/8	28

# SUGGESTED FABRIC

To sew the Bernard coat, choose coating fabrics with the following properties:

- heavyweight or medium weight, malleable, non-stretch or with very little stretch, opaque
- the fiber content can include natural fibers (wool, cashmere), artificial (viscose), blends (wool + cashmere, wool + polyester, etc.), and synthetic (polyester, polyester + elastane)
- the following fabrics are recommended: wool coating, cashmere, synthetic coating fabrics.

For the lining, we recommend artificial fibers (viscose), blended (viscose + elastane, viscose + polyester) or synthetic (polyester, polyester + elastane).

The garment in the photo is made of a wool coating fabric. This fabric is heavyweight and non-stretch. The fiber content is a blend of wool and cashmere. The fiber content of the lining is a blend of viscose and polyester.

4. 1 pair of shoulder pads
5. 1 pair of sleeve heads
6. 2 buttons, 2-2.5cm (3/4" - 1") in diameter (+1 spare button)
7. 6 buttons, 1.2cm (1/2") in diameter (+1 spare button)
8. 1 backing button, 1cm (3/8") in diameter, 1 backing button 2-2.5cm (3/4" - 1") in diameter
9. Thread matching the main fabric, 1 spool for the sewing machine
10. Thread matching the lining fabric, 1 spool for the sewing machine

## TOOLS AND EQUIPMENT

- Sewing machine for construction
- Buttonhole foot for your sewing machine
- Stitch-in-the-ditch foot for your sewing machine (optional)

## PATTERN PIECES LIST

**IMPORTANT!** Don't forget to transfer all pattern markings and notches onto the fabric.

### 1. From main fabric:

- front - cut 2
- back - cut 2
- side - cut 2
- top sleeve - cut 2
- bottom sleeve - cut 2
- upper collar - cut 1 on fold
- undercollar - cut 2
- collar stand - cut 2
- front facing - cut 2
- chest pocket welt - cut 1
- chest pocket facing - cut 1
- side pocket welt - cut 2
- side pocket facing - cut 2

### 2. From lining fabric:

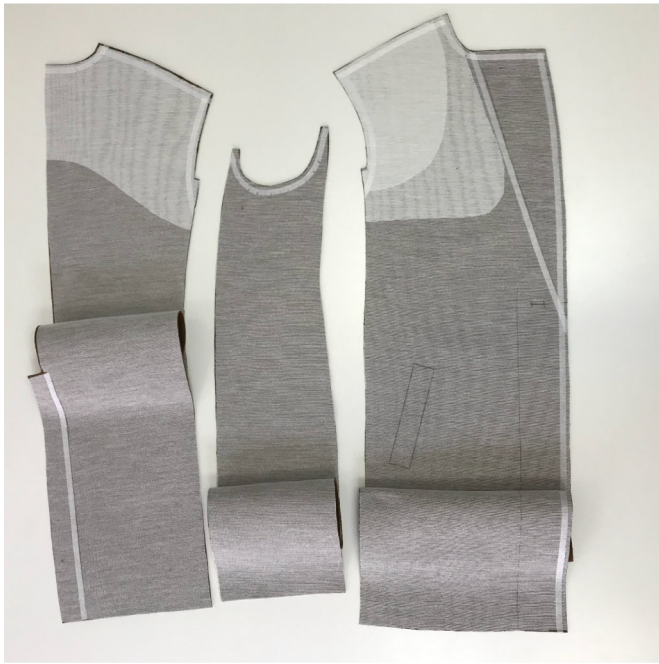
- front lining - cut 2
- back lining - cut 2
- side lining - cut 2
- top sleeve lining - cut 2
- bottom sleeve lining - cut 2
- chest pocket top lining - cut 1
- chest pocket bottom lining - cut 1
- side pocket top lining - cut 2
- side pocket bottom lining - cut 2

### 3. From interfacing:

- front - cut 2
- back - cut 2
- side - cut 2
- top sleeve, partially (sleeve cap and sleeve bottom areas marked in the pattern) - cut 2
- bottom sleeve, partially (top and bottom areas of the bottom sleeve piece marked in the pattern) - cut 2
- upper collar - cut 1 on fold
- undercollar - cut 2
- collar stand - cut 2
- front facing - cut 2
- chest pocket welt - cut 1
- chest pocket facing - cut 1
- side pocket welt - cut 2
- side pocket facing - cut 2

Cut from interfacing as well:

- 4 pieces (contoured in the pattern) to interface the front piece additionally with the second and third layers of the interfacing material
- 2 strips, 5.5cm (2 1/8") wide (length according to the pattern), to interface the side pocket areas



Before you apply interfacing to the main pieces of your garment, we recommend that you try and fuse a piece of the interfacing material and/or fusible seam tape to a scrap of the main fabric for testing. Please also check the iron settings: what temperature suits your fabric, whether or not the interfacing can be applied with steam, and the holding time needed for the interfacing to be fused to the main fabric.

**Fully interface the following pieces:**

- Front - 2 pieces
- Back - 2 pieces
- Side - 2 pieces
- Front facing - 2 pieces
- Upper collar - 1 piece cut on fold
- Undercollar - 2 pieces
- Collar stand - 2 pieces
- Welt - 2 pieces
- Chest pocket welt - 1 piece
- Welt facing - 2 pieces
- Chest pocket welt facing - 1 piece

**Interface the following pieces additionally:**

- Front - 2 pieces. The front shoulder line must be interfaced with the second and third layers of the interfacing material along the lines marked in the pattern. The fusible seam tape must be applied at 8mm (3/8") from the edge. Clip the curved areas.

Apply fusible seam tape to the following:

- Center front edge
- Neckline
- Shoulder edge
- Armhole
- Lapel roll line

Transfer the main construction lines from the pattern to the front piece using hand basting stitches:

- Center front line
- Lapel roll line
- Pocket placement
- Buttons and buttonholes placement.

Use light-colored thread for basting to avoid color transfer during the pressing and steaming of the fabric.