

FROM THE FOUNDER OF THE #VIKISEWS BRAND

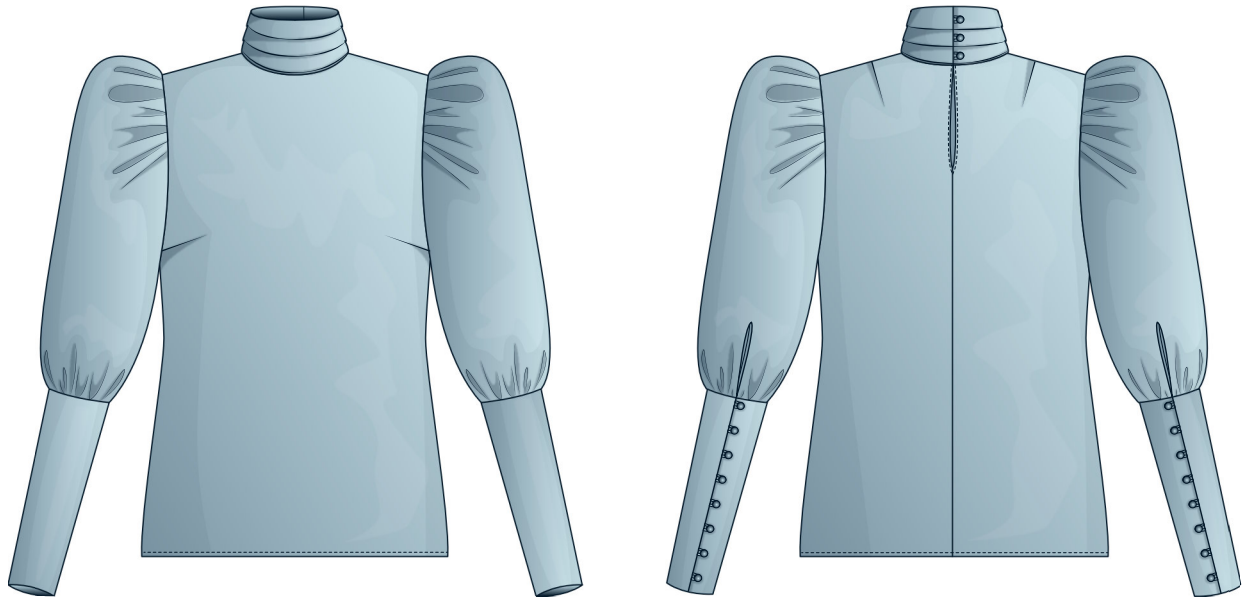


Back in 2016, when I was working on my first set of sewing instructions, I was trying to write them in such a way that even a complete beginner could easily understand and use them to create their very first garment. These instructions laid the foundation for the Vikisews brand, its vision and its mission. I wanted to create modern patterns with the most detailed and clear instructions.

Now, with each new collection we are constantly improving our instructions, amending them and adding more relevant details. By the time the final product reaches you, our drafters, correctors, and editors would have spent weeks perfecting every word and every photograph. If you compile a few of our instructions together, you will get a sewing manual that will assist you in sewing all kinds of garments at any difficulty level.

And I would be very happy if these instructions helped you to turn your hobby into a lifelong passion... Enjoy the process! Create your ultimate dream wardrobe! Wear your garments proudly for years to come!

If you have any questions, please contact us at info@vikisews.com - we are always there to help.



NITZAN PATTERN DESCRIPTION

Nitzan is a semi-fitted blouse with a straight silhouette and a gentle shaping at the sides. The front features bust darts, and the back features shoulder darts as well as a center back seam with a finished opening at the top for the fastening. The shoulder line is accentuated with shoulder pads and optional sleeve heads. Nitzan features a tall stand collar with horizontal draped pleats. The collar fastens with rouleau loops and buttons. The long set-in sleeves have lots of volume thanks to a generous gathering at the cap and a smaller gathering at the bottom. The sleeves are finished with long cuffs that fasten with rouleau loops and buttons. Nitzan is below-hip length.



IMPORTANT!

The contents of this pattern are copyright protected and belong exclusively to VikiSews. You may use VikiSews patterns for personal use. It is prohibited to share VikiSews patterns and instructions with third parties, as well as to publish patterns and instructions online for public access. According to part 1 of clause 1252 and clause 1301 of the Civil Code of the Russian Federation, failure to comply with the mentioned rules constitutes a breach of the legislation in force in the field of copyright and entails liability of the violator. Illegal use or distribution will be prosecuted in accordance with legislation.

You may use VikiSews patterns for commercial use, to sew custom-made garments and/or create fashion collections, on the condition that the patterns are solely used in a manufacturing setting and are not further shared with individuals.

TOTAL EASE ALLOWANCE

	Bust ease	Waistline ease	Hipline ease	Upper arm ease
cm	12.8	28.6	11.8	24.2–29.3
inches	5	11 1/4	4 5/8	9 1/2–11 1/2

GARMENT LENGTH, SLEEVE LENGTH

Height, cm	Back length, cm	Sleeve length, cm
1 (154-160)	57.9-59.9	59.8-61.4
2 (162-168)	60.9-62.7	61.8-63.4
3 (170-176)	63.9-65.7	63.8-65.4
4 (178-184)	65.8-67.4	65.8-67.4

Height, ft	Back length, in	Sleeve length, in
1 (5'1" - 5'3")	22 3/4–23 5/8	23 1/2–24 1/8
2 (5'4" - 5'6")	24–24 5/8	24 3/8–25
3 (5'7" - 5'9")	25 1/8–25 7/8	25 1/8–25 3/4
4 (5'10" - 6'1")	25 7/8–26 1/2	25 7/8–26 1/2

SUGGESTED FABRIC

To sew this blouse, choose woven fabrics with the following properties:

- Lightweight, with good drape, soft, non-stretch or with very little stretch, opaque or slightly sheer
- The fiber content can include natural fibers (silk, cotton), artificial (viscose), blends (cotton + silk, cotton + viscose, etc) and synthetic (polyester, polyester + elastane)
- The following fabrics are recommended: artificial silk, silk, viscose or silk crepe, atlas

Attention! We do not recommend stretchy knits and lightweight sheer fabrics (chiffon, organza, stretch lace).

The blouse in the photo is made of artificial silk. This fabric is lightweight, soft, has good drape and very little stretch. The fiber content is 100% polyester.

Main fabric, 150cm wide, with a directional print, in meters:

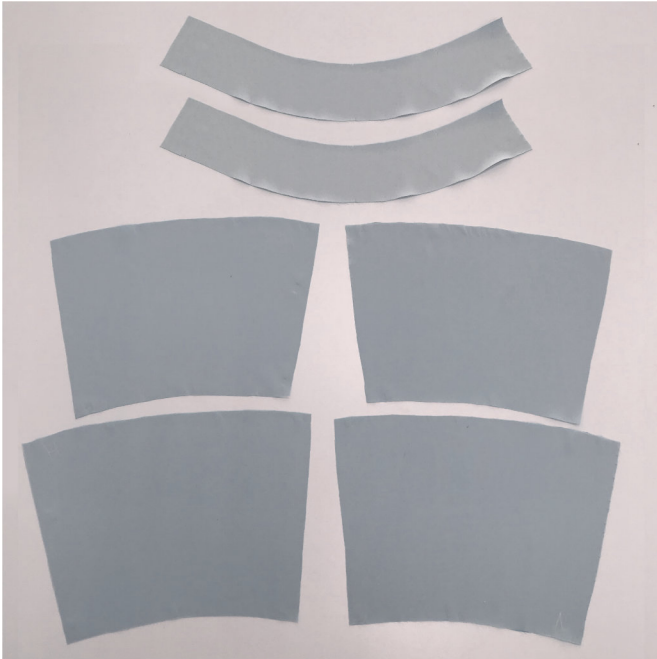
Height, cm	Size									
	34	36	38	40	42	44	46	48	50	52
1 (154-160)	1.55	1.55	1.6	1.6	1.65	1.7	1.8	1.8	1.85	1.85
2 (162-168)	1.6	1.6	1.65	1.65	1.7	1.75	1.85	1.85	1.9	1.9
3 (170-176)	1.65	1.65	1.7	1.7	1.75	1.8	1.9	1.9	1.95	1.95
4 (178-184)	1.7	1.7	1.75	1.75	1.8	1.85	1.95	1.95	2	2

Main fabric, 59" wide, with a directional print, in yards:

Height, ft	Size									
	34	36	38	40	42	44	46	48	50	52
1 (5'1" - 5'3")	1 3/4	1 3/4	1 3/4	1 3/4	1 3/4	1 7/8	2	2	2	2
2 (5'4" - 5'6")	1 3/4	1 3/4	1 3/4	1 3/4	1 7/8	1 7/8	2	2	2 1/8	2 1/8
3 (5'7" - 5'9")	1 3/4	1 3/4	1 7/8	1 7/8	1 7/8	2	2 1/8	2 1/8	2 1/8	2 1/8
4 (5'10" - 6'1")	1 7/8	1 7/8	1 7/8	1 7/8	2	2	2 1/8	2 1/8	2 1/8	2 1/8

IMPORTANT! When purchasing fabric, please account for shrinkage and buy 5% more than required.

2. Lightweight fusible knit or woven interfacing, 140cm (55") wide, for all sizes in all heights – 40cm (15 3/4")
3. Soft tulle for the sleeve head (optional), 130–140cm (51"–55") wide, for all sizes in all heights – 18cm (7 1/8")
4. A pair of thin shoulder pads
5. 19 cover buttons, 0.7–1cm (1/4"–3/8") in diameter
6. Matching thread — 5 spools (1 spool for the sewing machine and 4 spools for the overlocker)



Prior to interfacing the main garment pieces, we recommend testing and interfacing and/or applying seam tape interfacing to a scrap piece of the main material. Also check your iron settings: what temperature suits your fabric, can the interfacing be applied with steam, as well as the time needed to hold the iron over the interfacing for perfect adhesion.

Fully interface the following pieces:

- Cuff - 4 pieces
- Stand collar - 2 pieces

To interface, put the gluey side of the interfacing (the side that feels rough to the touch) on top of the wrong side of the fabric piece (or a section thereof) and press with the iron. Do not iron the piece, but instead press it section by section, holding it down with the iron a few seconds until that section is fused and then pressing down the next section. You may use a cotton pressing cloth to protect your iron sole. Once the interfacing process complete, leave the piece on a hard flat surface for 15 minutes for it to cool down.

First fitting

We recommend doing a first fitting for any garment.

For what purpose? The first fitting is done with the goal of checking the balance of the garment, correction of volumes (only to reduce the volume and in case you didn't make a toile and didn't make any pattern modifications prior to cutting fabric), correction of garment and sleeve lengths, checking of the neckline shape and depth.

How? After applying fusible interfacing, we recommend basting the darts and the main construction seams (center back seam, shoulder seams, side seams), including temporarily setting in the sleeves. Baste in the collar stand. Baste the garment hem. Baste the cuffs to the sleeves. This garment has shoulder pads, so the fitting must be done with shoulder pads as well. To ensure a well-fitting garment, it's important to properly assemble it for the first fitting, so pay attention to the notches during construction. Pin the pieces first at the notches and then between the notches, making sure the fabric is laying smoothly.

To baste the garment, use either a long straight machine stitch (stitch length 4–5mm [1/8"–1/4"] or baste by hand (stitch length approximately 1cm [3/8"]). For hand basting, it's important to have the pieces lay on a straight flat surface (table) without any parts hanging off the surface.