

FROM THE FOUNDER OF THE #VIKISEWS BRAND

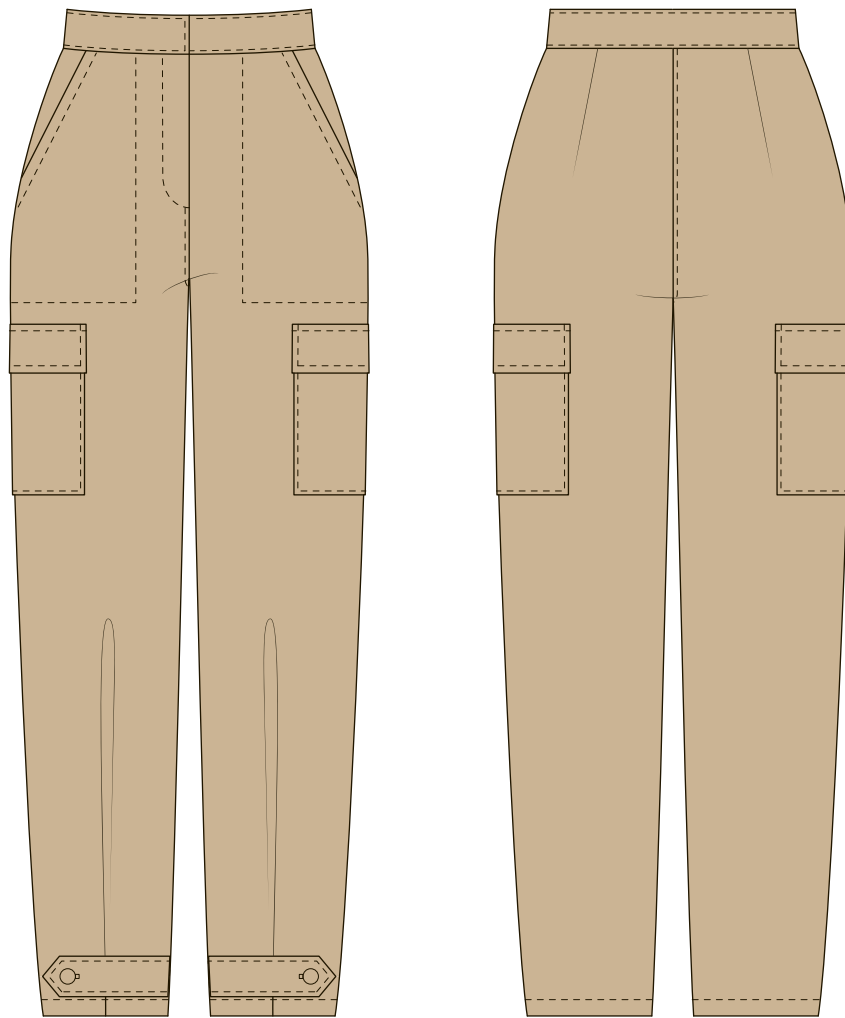


Back in 2016, when I was working on my first set of sewing instructions, I was trying to write them in such a way that even a complete beginner could easily understand and use them to create their very first garment. These instructions laid the foundation for the Vikisews brand, its vision and its mission. I wanted to create modern patterns with the utmost detailed and clear instructions.

Now, with each new collection we are constantly improving our instructions, amending them and adding more relevant details. By the time the final product reaches you, our drafters, correctors, and editors would have spent weeks perfecting every word and every photograph. If you compile a few of our instructions together, you will get a sewing manual that will assist you in sewing all kinds of garments at any difficulty level.

And I would be very happy if these instructions helped you to turn your hobby into a lifelong passion... Enjoy the process! Create your ultimate dream wardrobe! Wear your garments proudly for years to come!

If you have any questions, please contact us at info@vikisews.com — we are always there to help.



ANNE PATTERN DESCRIPTION

Anne pants are semi-fitted casual pants with a straight silhouette. The front features slash pockets as well as patch pockets with flaps topstitched over the side seams, and the back features waist darts. The waistband sits on the natural waist and fastens with a hook and eye. Anne fastens with a fly front zip. The bottom of the pants features an interesting detail: a buttonhole tab stitched into the inseam which fastens with a button on the front leg. The pockets, flaps, waistband, and hem feature decorative topstitching detail. Anne is ankle-length.



IMPORTANT!

The contents of this pattern are copyright protected and belong exclusively to Vikisews. You may use Vikisews patterns for personal use. It is prohibited to share Vikisews patterns and instructions with third parties, as well as to publish patterns and instructions online for public access. According to part 1 of clause 1252 and clause 1301 of the Civil Code of the Russian Federation, failure to comply with the mentioned rules constitutes a breach of the legislation in force in the field of copyright and entails liability of the violator. Illegal use or distribution will be prosecuted in accordance with legislation.

You may use Vikisews patterns for commercial use, to sew custom-made garments and/or create fashion collections, on the condition that the patterns are solely used in a manufacturing setting and are not further shared with individuals.

TOTAL EASE ALLOWANCE

| Waistline ease, cm | Hipline ease, cm |
|--------------------|------------------|
| 4,4 | 2 |

GARMENT LENGTH

| Height, cm | Garment length at side seam including waistband, cm |
|-------------|---|
| 1 (154-160) | 99 |
| 2 (162-168) | 102,5 |
| 3 (170-176) | 105,5 |
| 4 (178-184) | 108 |

SUGGESTED FABRIC

To sew these pants, choose woven fabrics with the following properties:

- Medium to heavy weight, soft, structured, non-stretch or with very little stretch, opaque
- The fiber content can include natural fibers (wool, cotton), blends (wool + polyester, cotton + polyester, etc), and synthetic (polyester, polyester + elastane)
- The following fabrics are recommended: heavy cotton, wool, corduroy, denim, twill.

The pants on the photo are made with denim fabric. This fabric is medium weight, soft and has very little stretch. The fiber content is a blend of cotton and elastane.

TOOLS AND EQUIPMENT

- Sewing machine for construction
- Overlocker for finishing raw edges. This may be replaced with a stretch overlock stitch or a zigzag stitch on the sewing machine (overlock or zigzag stitch width 2-3mm, stitch length 2.5mm)
- Buttonhole foot for your sewing machine
- Stitch-in-the-ditch foot for your sewing machine (optional)

PATTERN PIECES LIST

1. From main fabric:

- Front leg – cut 2
- Back leg – cut 2
- Waistband – cut 1
- Fly shield – cut 1 on fold
- Patch pocket – cut 2
- Flap – cut 4
- Slash pocket – cut 2
- Tab – cut 4
- Pocket facing – cut 2

2. From interfacing:

- Flap – cut 4
- Tab – cut 4
- Pocket facing – cut 2
- Waistband – cut 1

Additionally interface the following:

- Upper edge of patch pocket (with a 3cm wide strip of interfacing cut along the grainline)
- Fly extension – cut 1
- Zipper insertion area on the front left side (with a 1.5cm wide strip of interfacing cut along the grainline)
- Apply fusible seam tape interfacing to the slash pocket openings. This interfacing is fused at 8mm from the edge.

Also apply seam tape interfacing to two tabs and flaps in order to avoid stretching of the edges. This interfacing is fused at 8mm from the edge.

SEAM ALLOWANCES

All pattern pieces include 1cm seam allowances. The hem allowance is 4cm. Take this into account when laying out pattern pieces on the fabric.

IMPORTANT!

Don't forget to transfer all pattern markings and notches onto the fabric.

During basting, if it so happens that one piece is longer than the other, don't rush to true them by cutting the excess or stretching the shorter piece. First make sure that the notches are properly matched, lay the pieces on a flat surface and try to re-baste the pieces together. If the pieces still don't match in length, for example if one stretched or if there was a mistake during cutting, then the truing can be done after the first fitting, during construction of the garment.

After assembly, seams should be lightly pressed flat, then pressed to one side or pressed open.

What to look for during fitting?

The left and right sides of the garment should look the same.

Verify the garment's balance – the side seams should be vertical.

Evaluate the view from the front and back – there shouldn't be any draglines or wrinkles going towards the crotch.

Check the placement and size of the pockets and other small details (tabs, flaps). Cut out small pieces in muslin and pin to the garment.

Verify the garment's length.

Check for fit issues associated with individual features of the body.

Check garment's volume, it should be comfortable.

After the fitting, mark changes symmetrically to both sides of the garment; if needed, baste once more and try on again.



Place the pocket facing piece right sides together with the front leg pocket opening. Pin, baste, and stitch on the machine. Backstitch at the beginning and end.



Press the seam flat.