

FROM THE FOUNDER OF THE #VIKISEWS BRAND

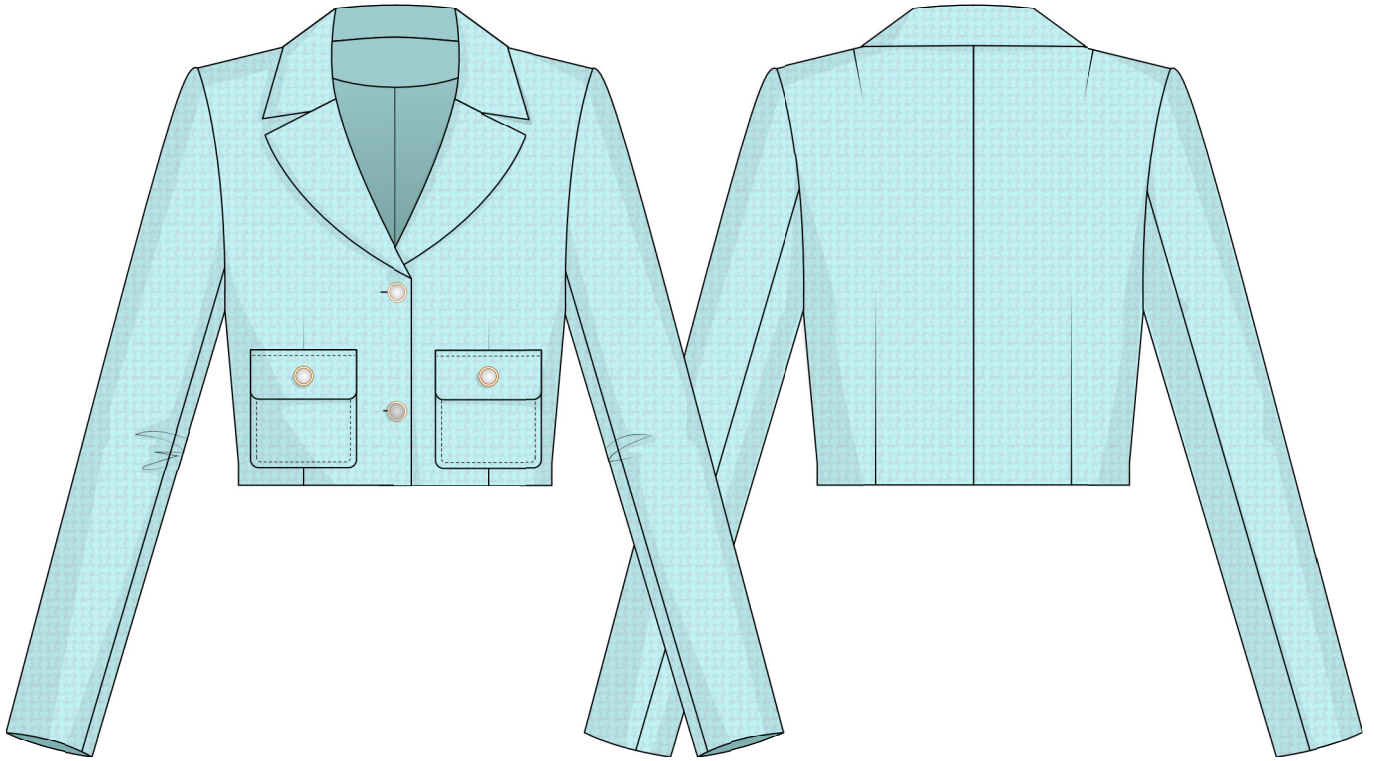


Back in 2016, when I was working on my first set of sewing instructions, I was trying to write them in such a way that even a complete beginner could easily understand and use them to create their very first garment. These instructions laid the foundation for the Vikisews brand, its vision and its mission. I wanted to create modern patterns with the utmost detailed and clear instructions.

Now, with each new collection we are constantly improving our instructions, amending them and adding more relevant details. By the time the final product reaches you, our drafters, correctors, and editors would have spent weeks perfecting every word and every photograph. If you compile a few of our instructions together, you will get a sewing manual that will assist you in sewing all kinds of garments at any difficulty level.

And I would be very happy if these instructions helped you to turn your hobby into a lifelong passion... Enjoy the process! Create your ultimate dream wardrobe! Wear your garments proudly for years to come!

If you have any questions, please contact us at info@vikisews.com — we are always there to help.



BRYCE PATTERN DESCRIPTION

Bryce is a cropped semi-fitted blazer with an accentuated waist. The front bust darts are converted into waist darts. There are waist and shoulder darts at the back. The turn-down collar is an imitation of the classic blazer-style notched collar. There are lower front patch pockets with flaps. The flaps close with buttons and buttonholes. The blazer has long, set-in, two-piece sleeves and a front button and buttonhole closure. The blazer is lined and finishes 2cm (3/4") below the waistline.



IMPORTANT!

The contents of this pattern are copyright protected and belong exclusively to Vikisews. You may use Vikisews patterns for personal use. It is prohibited to share Vikisews patterns and instructions with third parties, as well as to publish patterns and instructions online for public access. According to part 1 of clause 1252 and clause 1301 of the Civil Code of the Russian Federation, failure to comply with the mentioned rules constitutes a breach of the legislation in force in the field of copyright and entails liability of the violator. Illegal use or distribution will be prosecuted in accordance with legislation.

You may use Vikisews patterns for commercial use, to sew custom-made garments and/or create fashion collections, on the condition that the patterns are solely used in a manufacturing setting and are not further shared with individuals.

TOTAL EASE ALLOWANCE

	Bust ease	Waistline ease	Upper arm ease
cm	13.5–13.8	17.5–17.6	7
inches	5 3/8	6 7/8	2 3/4

GARMENT LENGTH, SLEEVE LENGTH

Height, cm	Back length, cm	Sleeve length, cm
1 (154–160)	39.1–40.9	58.8–60.7
2 (162–168)	40.1–41.9	60.8–62.6
3 (170–176)	41.1–42.9	62.8–64.6
4 (178–184)	42.1–43.9	64.8–66.6
Height, ft	Back length, in	Sleeve length, in
1 (5'1"–5'3")	15 3/8–16 1/8	23 1/8–23 7/8
2 (5'4"–5'6")	15 3/4–16 1/2	23 7/8–24 5/8
3 (5'7"–5'9")	16 1/8–16 7/8	24 3/4–25 3/8
4 (5'10"–6'1")	16 5/8–17 1/4	25 1/2–26 1/4

SUGGESTED FABRIC

To sew this garment, choose suiting and dress-weight fabrics with the following properties:

- medium-weight, non-stretch or low-stretch, opaque
- the fiber content can include natural fibers (wool, silk, cotton, linen), artificial fibers (viscose), blends (wool + silk, wool + polyester, cotton + viscose, etc.), and synthetics (polyester, polyester + elastane)
- the following fabrics are recommended: wool suiting, gabardine, tweed, corduroy, faux leather, suede.

Attention! We do not recommend very stretchy materials (knits) or lightweight, drapey, sheer fabrics (chiffon, challis, organza, stretch lace).

For the lining, choose lining fabrics made of artificial fibers (viscose), blends (viscose + elastane, viscose + polyester), and synthetics (polyester, polyester + elastane).

The garment in the photos is made of suiting. The fabric is medium-weight, pliable, soft, low-stretch. The fiber content is a blend of polyester, viscose and elastane.

The lining is a blend of viscose and polyester.

3. Lightweight interfacing, knit or woven, 140cm wide, in meters:

Height, cm	Sizes 34-38	Sizes 40-42	Sizes 44-46	Sizes 48-50	Size 52
1 (154–160)	0.9	0.95	1	1.05	1.05
2 (162–168)	0.9	0.95	1	1.05	1.1
3 (170–176)	0.95	0.95	1	1.05	1.1
4 (178–184)	0.95	1	1.05	1.1	1.15

Lightweight interfacing, knit or woven, 55" wide, in yards:

Height, ft	Sizes 34-38	Sizes 40-42	Sizes 44-46	Sizes 48-50	Size 52
1 (5'1"–5'3")	1	1	1 1/8	1 1/8	1 1/8
2 (5'4"–5'6")	1	1	1 1/8	1 1/8	1 1/4
3 (5'7"–5'9")	1	1	1 1/8	1 1/8	1 1/4
4 (5'10"–6'1")	1	1 1/8	1 1/8	1 1/4	1 1/4

4. Stitch-reinforced fusible bias tape – 4m (4 3/8yd)
5. One pair of shoulder pads
6. One pair of sleeve heads
7. Four buttons, 2.2cm (7/8") in diameter
8. Matching thread – 1 spool for the sewing machine.

TOOLS AND EQUIPMENT

- sewing machine for construction
- buttonhole foot for the sewing machine
- edgestitch foot for the sewing machine (optional).

Check the shape of the collar and lapels. The collar should sit flush against the neck at the back. Check for fitting issues that might be caused by unique features of the person's body (for example, if the figure is asymmetrical, with one shoulder higher than the other, etc.).

The button placement shouldn't cause any pulling, folds, or creases.

Make sure there is enough ease for a comfortable fit.

After the fitting, make the necessary adjustments to both sides of the garment and do another baste fitting if necessary.



For hand stitches, use a light-colored thread that won't bleed into the fabric when steam ironed. Transfer the main construction lines from the pattern to the fabric pieces.

Use chalk or soap to mark the dart legs on the wrong side of the pieces. Thread trace the center front line on the front piece, as well as the pocket and flap placement lines.



Working from the wrong side, pin the darts on the front and back pieces according to the marked lines.

Place the two back pieces right sides together, align the center back seam edges, pin. Machine-stitch the darts and center back seam. Start stitching the darts from the wider end (the base of the dart) and move toward the dart point. Backstitch neatly at both ends of each seam.