

FROM THE FOUNDER OF THE #VIKISEWS BRAND

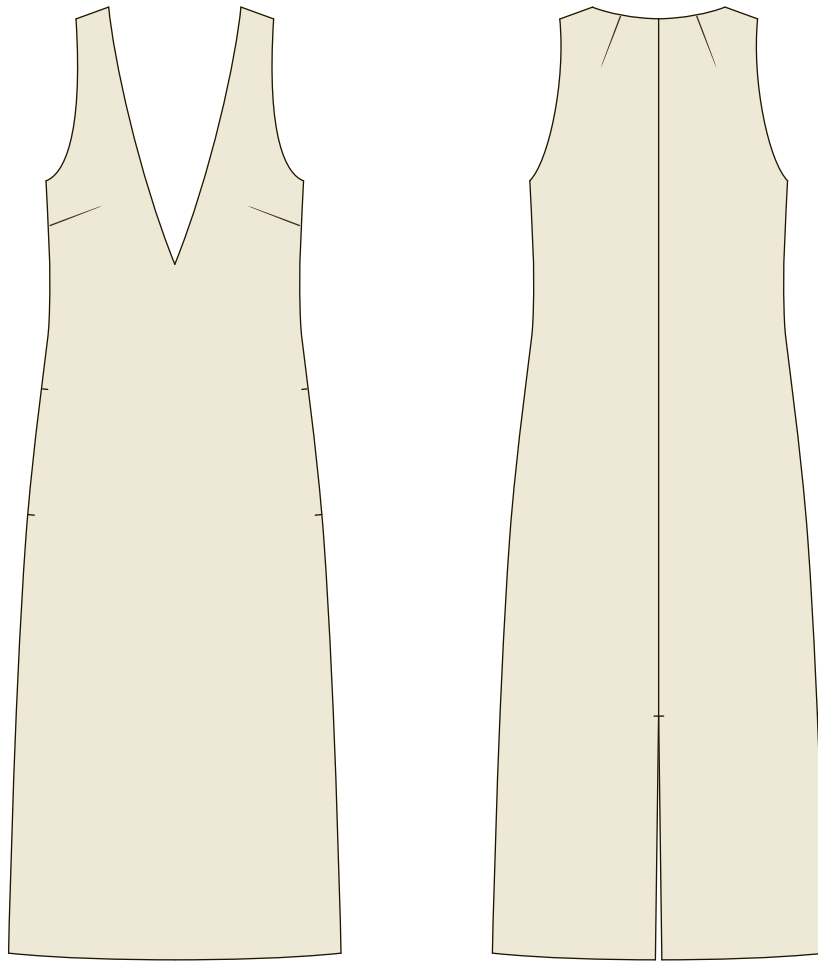


Back in 2016, when I was working on my first set of sewing instructions, I was trying to write them in such a way that even a complete beginner could easily understand and use them to create their very first garment. These instructions laid the foundation for the Vikisews brand, its vision and its mission. I wanted to create modern patterns with the utmost detailed and clear instructions.

Now, with each new collection we are constantly improving our instructions, amending them and adding more relevant details. By the time the final product reaches you, our drafters, correctors, and editors would have spent weeks perfecting every word and every photograph. If you compile a few of our instructions together, you will get a sewing manual that will assist you in sewing all kinds of garments at any difficulty level.

And I would be very happy if these instructions helped you to turn your hobby into a lifelong passion... Enjoy the process! Create your ultimate dream wardrobe! Wear your garments proudly for years to come!

If you have any questions, please contact us at info@vikisews.com — we are always there to help.



STACY PATTERN DESCRIPTION

Stacy is a semi-fitted dress with a slightly trapeze silhouette and a free-hanging lining. The silhouette is formed by the side seam as well as the center back seam lines, and the shaping at the bust is achieved with bust darts transferred to the side seams. Stacy has inseam pockets, no fastenings, and the center back seam ends with a slit opening. The dress is sleeveless, has a deep V neckline, and is below-the-knee length.



IMPORTANT!

The contents of this pattern are copyright protected and belong exclusively to Vikisews. You may use Vikisews patterns for personal use. It is prohibited to share Vikisews patterns and instructions with third parties, as well as to publish patterns and instructions online for public access. According to part 1 of clause 1252 and clause 1301 of the Civil Code of the Russian Federation, failure to comply with the mentioned rules constitutes a breach of the legislation in force in the field of copyright and entails liability of the violator. Illegal use or distribution will be prosecuted in accordance with legislation.

You may use Vikisews patterns for commercial use, to sew custom-made garments and/or create fashion collections, on the condition that the patterns are solely used in a manufacturing setting and are not further shared with individuals.

TOTAL WEARING EASE

Bust line ease, cm	Waistline ease, cm	Hipline ease, cm
10	30	9

GARMENT LENGTH

Height, cm	Garment length at center back, cm
1 (154-160)	104
2 (162-168)	108
3 (170-176)	112
4 (178-184)	116

SUGGESTED FABRIC

To sew this dress, choose woven fabrics with the following properties:

- Medium weight, soft, structured, non-stretch
- The fiber content can include natural fibers (wool, silk, cotton), artificial (viscose), blends (wool + silk, wool + polyester, cotton + viscose, etc.), and synthetic (polyester)
- The following fabrics are recommended: wool suiting, cotton, tweed, fine coating, gabardine, sturdy velvet, denim, jacquard.

Attention! We do not recommend stretchy knit materials and lightweight sheer materials. For the lining, we recommend artificial fibers (viscose), blends (viscose + polyester), or synthetic (polyester).

The dress on the photo is made with wool suiting. This fabric is medium weight, soft and non-stretch. The fiber content is 100% wool. The lining is 100% viscose.

PATTERN PIECES LIST

1. From main fabric:

- Front – cut 1 on fold
- Back – cut 2
- Slit reinforcement – cut 1

2. From lining:

- Front lining – cut 1 on fold
- Back lining – cut 2
- Pocket bag - cut 4

3. From interfacing:

- Interface the slit edges on the back pieces with a 4cm wide strip cut along the selvedge (take the length from the pattern piece)

- Interface the grown-on pocket facings on the front and back pieces with a strip cut along the selvedge (take the shape and size from the pattern pieces)

IMPORTANT!

Don't forget to transfer all pattern markings and notches onto the fabric.

Additionally, reinforce the armhole and neckline edges on the front and back pieces with bias cut and stitched stay tape (also known as Vilene stay tape). The stitching line on the strips should be at 9mm from the garment edges.

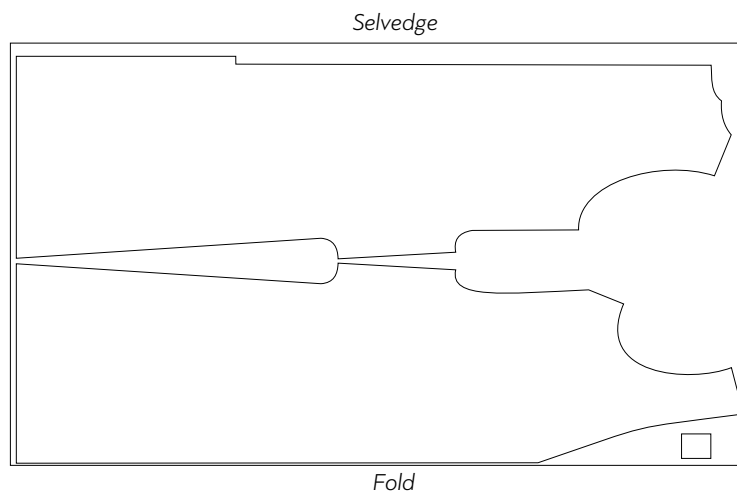
SEAM ALLOWANCES

All pattern pieces include:

- 1 cm seam allowances;
- the hem allowance is 4cm. Take this into account when laying out pattern pieces on the fabric..

Cutting layouts.

Main fabric, 140cm wide, with one fold, for sizes 34-42 in all heights, with nap and a directional print



What to look for during fitting?

The left and right sides of the garment should look the same.

Verify the balance of the garment – the side seams and the center front should be vertical, verify the shoulder seam. The slit should hang straight, without the edges pulling apart or overlapping.

Evaluate the side view of the front and back of the garment (look at yourself sideways in the mirror). The front and back should not sag or be pulled up. There shouldn't be any horizontal wrinkles across the back, nor any tension across the shoulder blades and shoulders.

Evaluate the side seam from the front or back. The side should not sag or pull up. Verify the garment's length.

Check for fit issues associated with individual features of the body (for example an asymmetrical figure with shoulders at different levels, etc.)

Check garment volume, there should be enough ease and it should feel comfortable.

After the fitting, mark changes symmetrically to both sides of the garment; if needed, baste once more and try on again.



On the wrong side of the front piece, pin, baste, and stitch the bust darts on the machine. Backstitch at the beginning, tie knots at the end of the stitching and hide thread tails in the dart bulk.



Press the darts flat.



Cut the dart allowance open, stopping 2cm short of the apex.