

FROM THE FOUNDER OF THE #VIKISEWS BRAND

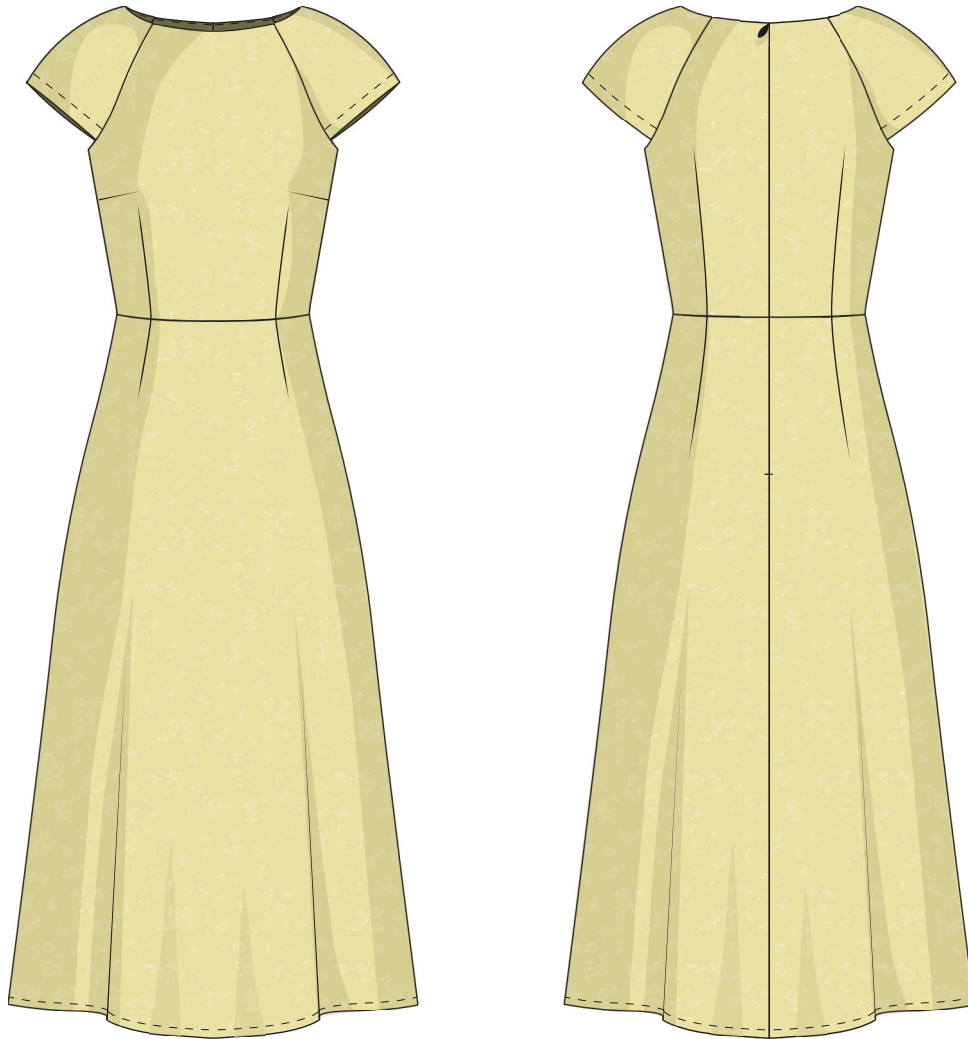


Back in 2016, when I was working on my first set of sewing instructions, I was trying to write them in such a way that even a complete beginner could easily understand and use them to create their very first garment. These instructions laid the foundation for the Vikisews brand, its vision and its mission. I wanted to create modern patterns with the most detailed and clear instructions.

Now, with each new collection we are constantly improving our instructions, amending them and adding more relevant details. By the time the final product reaches you, our drafters, correctors, and editors would have spent weeks perfecting every word and every photograph. If you compile a few of our instructions together, you will get a sewing manual that will assist you in sewing all kinds of garments at any difficulty level.

And I would be very happy if these instructions helped you to turn your hobby into a lifelong passion... Enjoy the process! Create your ultimate dream wardrobe! Wear your garments proudly for years to come!

If you have any questions, please contact us at info@vikisews.com - we are always there to help.



LEONIE PATTERN DESCRIPTION

Leonie is a close fitting dress with an accentuated waist. It features a slight A-line shape skirt, and a waist seam. The shaping on the front bodice is achieved with bust and waist darts. The bust darts have been transferred to the side seams. The shaping on the back bodice is achieved with waist darts and a center seam. The center back seam has an invisible zipper fastening. On the front and back bodice, Leonie features yokes whose shape resembles raglan sleeves. The dress has a slightly dropped shoulder line. Leonie is mid-calf length.



IMPORTANT!

The contents of this pattern are copyright protected and belong exclusively to VikiSews. You may use VikiSews patterns for personal use. It is prohibited to share VikiSews patterns and instructions with third parties, as well as to publish patterns and instructions online for public access. According to part 1 of clause 1252 and clause 1301 of the Civil Code of the Russian Federation, failure to comply with the mentioned rules constitutes a breach of the legislation in force in the field of copyright and entails liability of the violator. Illegal use or distribution will be prosecuted in accordance with legislation.

You may use VikiSews patterns for commercial use, to sew custom-made garments and/or create fashion collections, on the condition that the patterns are solely used in a manufacturing setting and are not further shared with individuals.

TOTAL EASE ALLOWANCE

Bust ease, cm	Waistline ease, cm	Hipline ease, cm	Upper arm ease, cm
7.3-7.5	4.2-4.3	8-8.2	2.5

GARMENT LENGTH, SLEEVE LENGTH

Height, cm	Garment length, cm	Shoulder seam length, cm
1 (154-160)	110.1-111.8	21-23.2
2 (162-168)	114.2-115.8	21.3-23.7
3 (170-176)	118.1-119,7	22-24.2
4 (178-184)	122-123.7	22,6-24.7

SUGGESTED FABRIC

To sew this dress, choose dress-weight fabrics with the following properties:

- light to medium weight, with good drape, breathable, soft, non-stretch or with little stretch, opaque
- the fabric content can include natural (silk, cotton, linen), artificial (viscose), blends (silk + cotton, cotton + viscose, etc.), and synthetic fibers (polyester, polyester + elastane)
- the following fabrics are recommended: dress-weight denim, challis, modal, dress-weight viscose, crepe, silk with elastane

Attention! We do not recommend very stretchy knit materials (jersey fabric) and lightweight sheer fabrics (chiffon, organza, stretch lace).

The dress on the photo is made in viscose. This fabric is soft, non-stretch, and has good drape. The fiber content is 100% viscose.

TOOLS AND EQUIPMENT

- sewing machine for construction
- serger for finishing raw edges. This may be replaced with a stretch overlock stitch or a zigzag stitch on the sewing machine (overlock or zigzag stitch width 2-3mm, stitch length 2.5mm)
- edge stitching foot for the sewing machine (optional)
- invisible zipper foot for the sewing machine

PATTERN PIECES LIST

1. From main fabric:

- front bodice – cut 1 on fold
- back bodice – cut 2
- back yoke – cut 2
- front yoke – cut 2
- front skirt – cut 1 on fold
- back skirt – cut 2
- front neck facing – cut 1 on fold
- back neck facing – cut 2
- bias binding – cut 2

Important! Don't forget to transfer all pattern markings and notches onto the fabric.

2. From interfacing:

- front neck facing – cut 1 on fold
- back neck facing – cut 2

Additionally, cut 2 fusible interfacing strips, 2 cm wide, to interface the seam allowances of center seam on the back bodice and skirt pieces, where the invisible zipper will be inserted. The grainline of the interfacing should be parallel to the longer side of the strips (along the selvedge of the interfacing).

SEAM ALLOWANCES

All pattern pieces include seam allowances as follows:

- garment hem allowance – 2 cm
- yoke hem allowance – 2 cm
- center seam – 1.5 cm
- all other seams – 1 cm

Take this into account when laying out pattern pieces on the fabric.

Before applying interfacing to the main fabric, we recommend testing interfacing and/or straight fusible tape on a leftover piece of fabric. Also, make sure to check the settings on your iron: the temperature, the steam (if the main fabric can be interfaced using the steam setting), and the time needed for the interfacing to adhere to the main fabric.



Fully interface the following pieces:

- front neck facing – 1 piece on fold
- back neck facing – 2 pieces

To interface (using the 1st method), put the gluey side of the interfacing (the side that feels rough to the touch) on top of the wrong side of the fabric piece (or a section thereof) and press with the iron. Do not iron the piece, but instead press it section by section, holding it down with the iron a few seconds until that section is adhered and then pressing down the next section. You may use a cotton pressing cloth to protect your iron sole. Once the interfacing process is complete, leave the piece on a hard, flat surface for 15 minutes for it to cool down.



To finish the neck facings without a serger (using the 2nd method), cut the following pieces from interfacing:

- front neck facing – 1 piece on fold
- back neck facing – 2 pieces