

FROM THE FOUNDER OF THE #VIKISEWS BRAND

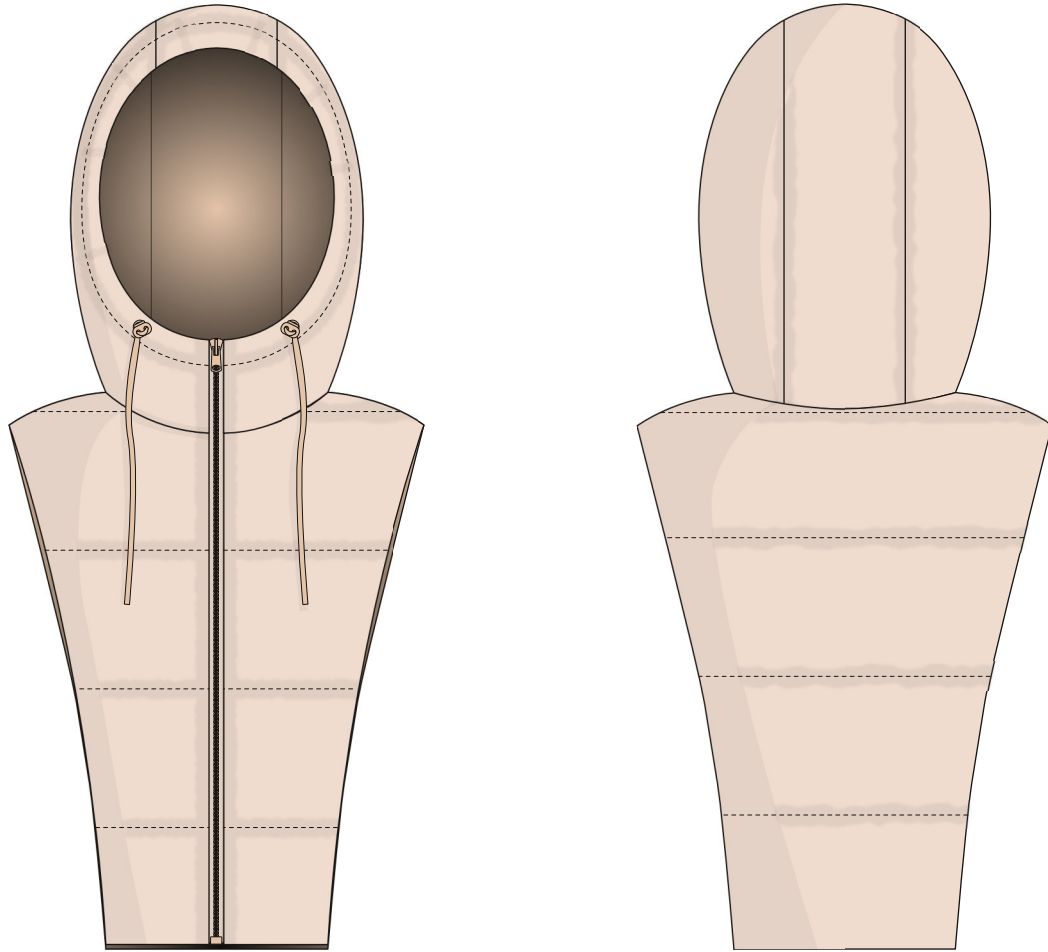


Back in 2016, when I was working on my first set of sewing instructions, I was trying to write them in such a way that even a complete beginner could easily understand and use them to create their very first garment. These instructions laid the foundation for the Vikisews brand, its vision and its mission. I wanted to create modern patterns with the most detailed and clear instructions.

Now, with each new collection we are constantly improving our instructions, amending them and adding more relevant details. By the time the final product reaches you, our drafters, correctors, and editors would have spent weeks perfecting every word and every photograph. If you compile a few of our instructions together, you will get a sewing manual that will assist you in sewing all kinds of garments at any difficulty level.

And I would be very happy if these instructions helped you to turn your hobby into a lifelong passion... Enjoy the process! Create your ultimate dream wardrobe! Wear your garments proudly for years to come!

If you have any questions, please contact us at info@vikisews.com - we are always there to help.



RONI PATTERN DESCRIPTION

Roni is a semi-fitted, padded, detachable hood that features wide horizontal quilting. The front has an open end zipper at the center. There is a casing along the edge of the hood with a cord threaded through it. The cord is secured with two metallic cord locks. Roni is waist-length.



IMPORTANT!

The contents of this pattern are copyright protected and belong exclusively to VikiSews. You may use VikiSews patterns for personal use. It is prohibited to share VikiSews patterns and instructions with third parties, as well as to publish patterns and instructions online for public access. According to part 1 of clause 1252 and clause 1301 of the Civil Code of the Russian Federation, failure to comply with the mentioned rules constitutes a breach of the legislation in force in the field of copyright and entails liability of the violator. Illegal use or distribution will be prosecuted in accordance with legislation.

You may use VikiSews patterns for commercial use, to sew custom-made garments and/or create fashion collections, on the condition that the patterns are solely used in a manufacturing setting and are not further shared with individuals.

GARMENT LENGTH

Height, cm	Back length, cm	Height, ft	Back length, in
1 (154-160)	46.3-47.5	1 (5'1"-5'3")	18 1/4-18 3/4
2 (162-168)	48.3-49.5	2 (5'4"-5'6")	19-19 1/2
3 (170-176)	50.3-51.5	3 (5'7"-5'9")	19 3/4-20 1/4
4 (178-184)	52.3-53.5	4 (5'10"-6'1")	20 5/8-21 1/8

SUGGESTED FABRIC

To sew this hood, choose outerwear fabrics with the following properties:

- medium-weight, soft, non-stretch, opaque, windproof and water-resistant
- the fabric content can include natural (cotton), artificial (viscose, acetate), blends (cotton + polyester, etc.), and synthetic fibers (polyester, polyester + elastane)
- the following fabrics are recommended: blended raincoat fabric, dewspo, twill, taffeta, taslan, etc. The main fabric is used for the lining as well.

For the insulation layer, use alpolux, isosoft, thinsulate, polyester batting 200 g/m2.

The hood in the photo is made in outerwear dewspo fabric (100% polyester). This fabric is medium-weight, structured, windproof and water-resistant. The insulation layer is polyester batting 200 g/m2.

FABRIC AND NOTIONS REQUIREMENTS

1. Main fabric, 140 cm wide, in meters:

Height, cm	Size		
	XS-S	M-L	XL
1 (154-160)	1.42	1.45	1.47
2 (162-168)	1.46	1.49	1.51
3 (170-176)	1.51	1.53	1.56
4 (178-184)	1.55	1.57	1.6

Main fabric, 150 cm wide, in meters:

Height, cm	Size		
	XS-S	M-L	XL
1 (154-160)	1.09	1.11	1.15
2 (162-168)	1.12	1.15	1.17
3 (170-176)	1.17	1.18	1.21
4 (178-184)	1.21	1.22	1.24

SEAM ALLOWANCES

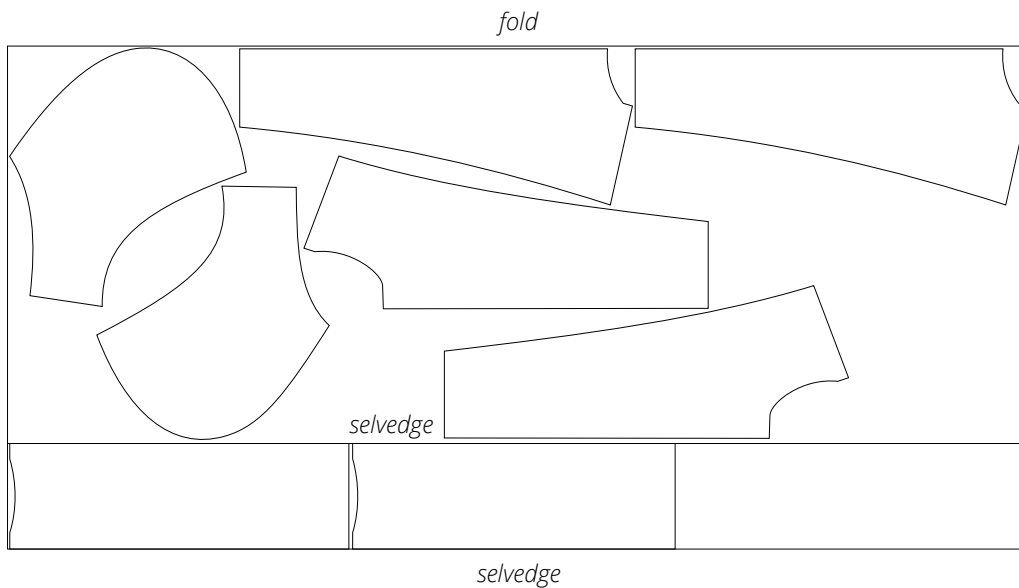
All pattern pieces include seam allowances as follows:

- shoulder edges - 1.5 cm (5/8")
- neckline edge - 1.5 cm (5/8")
- center front edges - 1.5 cm (5/8")
- zipper attachment edge on the outer hood side panel - 1.5 cm (5/8")
- zipper attachment edge on the inner hood side panel - 1.5 cm (5/8")
- side edges - 1.5 cm (5/8")
- hem allowance - 2.5 cm (1")
- all other seams - 1 cm (3/8").

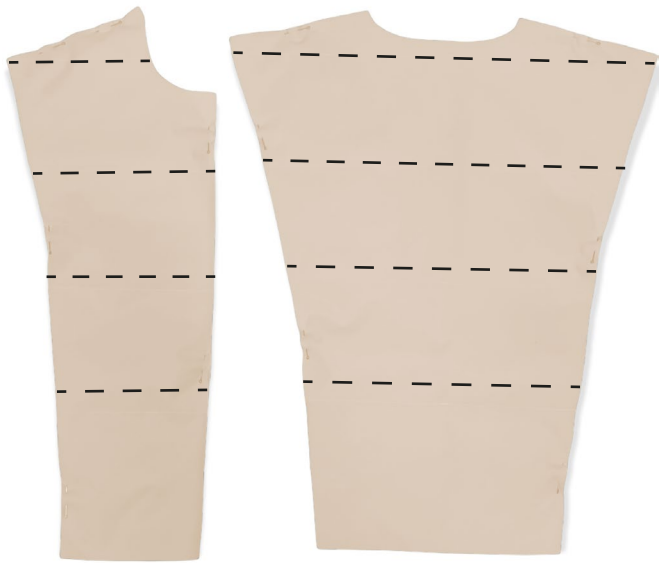
Take this into account when laying out pattern pieces on the fabric.

CUTTING LAYOUT

Main fabric with a non-directional print, 140 cm (55") wide, with one offset fold, for all sizes in all heights



The fold is offset to accommodate the outer and inner hood center pieces. They are cut on a single layer out of leftover fabric.



Pin the pieces cut out of the insulation material of choice to the wrong side of the main pieces. Working from the right side and using a 4–5 mm stitch length, quilt the pieces on the sewing machine.



Machine-stitch along the raw edges of the front and back pieces, 5mm (just under 1/4") away from the edge, as shown in the photo. Use a 5 mm stitch length.