

I M P O R T A N T !

The contents of this pattern are copyright protected and belong exclusively to VikiSews:

- **you may use VikiSews patterns for personal use.** It is prohibited to share VikiSews patterns and instructions with third parties, as well as to publish patterns and instructions online for public access.
- **You may use VikiSews patterns for commercial use,** to sew custom-made garments and/or create garment collections, on the condition that the patterns are solely used in a manufacturing setting and are not further shared with individuals.

A R I A D N A

#vikisews

PATTERN DESCRIPTION

Ariadna is a double-breasted blazer with a straight silhouette and an oversized fit. It features side panels, the front has a welt pocket in the top left, the vertical darts transition into double welt pockets with flaps which continue over the side panels. The back features shoulder darts and the centre back seam ends with a vent. The shoulder line is extended. Ariadna has a classic blazer-style collar with a stand and a peak lapel, the front edges are rounded at the hem, and it fastens with one buttonhole and button. The blazer has a long set-in two-piece sleeve. It's fully finished with a lining and is below-the-hip length.

A special feature of the Ariadna blazer is that some visible edges are left raw, notably the collar and lapel, the front edges, the garment and sleeve hems.



TOTAL WEARING EASE

Bust ease, cm	Waistline ease, cm	Hipline ease, cm	Upper arm ease, cm
15,8-26,6	26,4-37	13,0-21,6	11,5-11,8

GARMENT LENGTH, SLEEVE LENGTH

Height, cm	Garment length at center back, cm	Sleeve length, cm
1 (154-160)	69,6	60,5
2 (162-168)	72,6	62,5
3 (170-176)	75,6	64,5
4 (178-184)	78,6	66,5

SUGGESTED FABRIC

To sew this blazer, choose woven fabrics with the following properties:

- Medium weight, flexible, breathable, soft, non-stretch or with very little stretch, opaque
- The fiber content can include natural fibers (wool, silk, cotton, linen), artificial (viscose), blends (wool + silk, wool + polyester, cotton + viscose, etc), and synthetic (polyester, polyester + elastane)
- The following fabrics are recommended: wool suiting, gabardine, melton wool

Attention! We do not recommend stretchy knit materials and lightweight sheer fabrics (chiffon, organza, stretch lace).

For the lining, we recommend artificial fibers (viscose), blends (viscose + elastane, viscose + polyester), or synthetic fibers (polyester, polyester + elastane).

The blazer on the photo is made with viscose suiting. This material is medium weight, flexible, soft, non-stretch. The fiber content is a blend of viscose and polyester. The lining is 100% viscose.

FABRIC AND NOTIONS REQUIREMENTS

1. Main fabric, 140cm wide, in meters

Height, cm	Sizes 34-38	Sizes 40-46	Sizes 48-52
1 (154-160)	1,89	1,89	1,99
2 (162-168)	1,92	1,94	2,06
3 (170-176)	1,97	2,02	2,13
4 (178-184)	2,01	2,1	2,21

2. Lining fabric, 140cm wide, in meters

Height, cm	Sizes 34-38	Sizes 40-46	Sizes 48-52
1 (154-160)	1,37	1,41	1,54
2 (162-168)	1,41	1,45	1,59
3 (170-176)	1,47	1,5	1,64
4 (178-184)	1,52	1,55	1,68

IMPORTANT!

When purchasing fabric, please account for shrinkage and buy 5% more than required.

3. Lightweight fusible woven interfacing, 140cm wide, in meters

Height, cm	Sizes 34-38	Sizes 40-46	Sizes 48-52
1 (154-160)	1,8	1,87	2,01
2 (162-168)	1,85	1,92	2,04
3 (170-176)	1,9	1,98	2,08
4 (178-184)	1,96	2,03	2,12

4. Fusible straight grain tape interfacing – 3-5m depending on size and height

5. Fusible web - 1.5-2m depending on size and height

6. One pair of shoulder pads

7. One pair of sleeve heads

8. One button 2.3-2.5cm in diameter

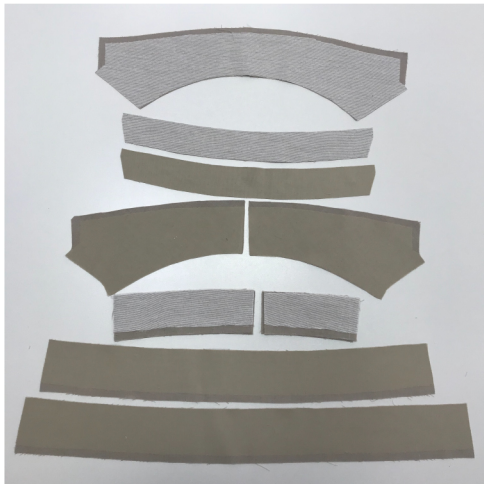
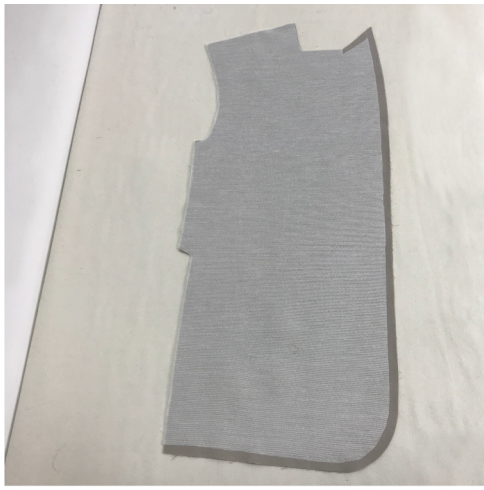
9. One transparent hidden backing button 2.3cm in diameter .

10. Matching thread, 1 spool

11. Matching topstitching thread, 1 spool

TOOLS AND EQUIPMENT

- Sewing machine for construction
- Buttonhole foot for your sewing machine
- Stitch-in-the-ditch foot for your sewing machine (optional)



This garment is cut out using the rough cutting method. This means that you need to add an additional seam allowance of 1cm around the perimeter of all the pieces when cutting out. This will help prevent shrinkage during the interfacing process.

Cut the interfacing pieces according to the pattern pieces, but trim off 1.5cm on the front edges and hems.

Prior to interfacing the main garment pieces, we recommend to test and interface and/or apply seam tape interfacing to a scrap piece of the main material. Also check your iron settings: what temperature suits your fabric, can the interfacing be applied with steam, as well as the time needed to hold the iron over the interfacing for perfect adhesion.

Fully interface the following pieces:

- Back – cut 2
- Side - cut 2
- Front – cut 2
- Front facing - cut 2
- Upper collar – cut 1 on fold
- Undercollar - cut 2
- Collar stand – cut 2
- Top sleeve hem facing - cut 2
- Bottom sleeve hem facing - cut 2
- Right hem facing - cut 1
- Left hem facing - cut 1
- Pocket flap - cut 2
- Pocket flap lining - cut 2
- Chest pocket welt - cut 1
- Chest pocket facing - cut 1
- Side pocket facing - cut 2
- Side pocket top welt - cut 2
- Side pocket bottom welt - cut 2

To interface, put the gluey side of the interfacing (the side that feels rough to the touch) on top of the wrong side of the fabric piece (or a section thereof) and press with the iron. Do not iron the piece, but instead press it section by section, holding it down with the iron a few seconds until that section is adhered and then pressing down the next section. You may use a cotton pressing cloth to protect your iron sole. Once the interfacing process complete, leave the piece on a hard flat surface for 15 minutes for it to cool down.

Additionally, partially interface the shoulder area on the front and back pieces with a sturdier interfacing material. The areas to interface are indicated on the pattern pieces. The grainline on the interfacing corresponds to the grainline on the main material.

Partially interface the following:

- Top part of the top sleeve cap - cut 2
- Top part of the bottom sleeve cap - cut 2
- Bottom part of the top sleeve - cut 2
- Bottom part of the bottom sleeve - cut 2