

FROM THE FOUNDER OF THE #VIKISEWS BRAND



Back in 2016, when I was working on my first set of sewing instructions, I was trying to write them in such a way that even a complete beginner could easily understand and use them to create their very first garment. These instructions laid the foundation for the Vikisews brand, its vision and its mission. I wanted to create modern patterns with the most detailed and clear instructions.

Now, with each new collection we are constantly improving our instructions, amending them and adding more relevant details. By the time the final product reaches you, our drafters, correctors, and editors would have spent weeks perfecting every word and every photograph. If you compile a few of our instructions together, you will get a sewing manual that will assist you in sewing all kinds of garments at any difficulty level.

And I would be very happy if these instructions helped you to turn your hobby into a lifelong passion... Enjoy the process! Create your ultimate dream wardrobe! Wear your garments proudly for years to come!

If you have any questions, please contact us at info@vikisews.com - we are always there to help.



BERTHA PATTERN DESCRIPTION

Bertha is a semi-fitted blouse with a straight silhouette. The front features bust darts coming from the side seam, and the back has shoulder darts. The deep V-neckline is finished with a facing and has a flounce falling gracefully from the shoulder seam. A long, set-in sleeve featuring a slit and pleats at the bottom has a cuff that closes with a button and buttonhole, and is finished with a flounce. The blouse is hip length.



IMPORTANT!

The contents of this pattern are copyright protected and belong exclusively to VikiSews. You may use VikiSews patterns for personal use. It is prohibited to share VikiSews patterns and instructions with third parties, as well as to publish patterns and instructions online for public access. According to part 1 of clause 1252 and clause 1301 of the Civil Code of the Russian Federation, failure to comply with the mentioned rules constitutes a breach of the legislation in force in the field of copyright and entails liability of the violator. Illegal use or distribution will be prosecuted in accordance with legislation.

You may use VikiSews patterns for commercial use, to sew custom-made garments and/or create fashion collections, on the condition that the patterns are solely used in a manufacturing setting and are not further shared with individuals.

TOTAL EASE ALLOWANCE

	Bust ease	Waistline ease	Hipline ease	Upper arm ease
cm	14	35	12.5	5–5.5
inches	5 1/2	13 3/4	4 7/8	2–2 1/8

GARMENT LENGTH, SLEEVE LENGTH

Height, cm	Garment length at center back, cm	Sleeve length including cuff and flounce, cm
1 (154–160)	57–58.8	63
2 (162–168)	60–61.8	65
3 (170–176)	63–64.8	67
4 (178–184)	66–67.8	69

Height, ft	Garment length at center back, in	Sleeve length including cuff and flounce, in
1 (5'1"–5'3")	22 1/2–23 1/8	24 3/4
2 (5'4"–5'6")	23 5/8–24 3/8	25 5/8
3 (5'7"–5'9")	24 3/4–25 1/2	26 3/8
4 (5'10"–6'1")	26–26 3/4	27 1/8

SUGGESTED FABRIC

To sew the blouse, choose woven blouse and dress-weight fabrics with the following properties:

- Moderately lightweight, with good drape, soft, non-stretch or with very little stretch
- The fiber content can include natural fibers (silk, cotton), artificial (viscose), blends (cotton + silk, viscose + polyester, cotton + viscose, etc.), and synthetics (polyester, polyester + elastane).
- The following fabrics are recommended: natural silk, artificial silk, chiffon, crepe de chine, organza, silk crepe.

Attention! We do not recommend stretchy materials (knit fabrics, stretch lace).

Important! The color of the wrong and right sides of your fabric must be practically the same.

The garment in the photo is made of artificial silk. This fabric is lightweight, soft, with good drape, and with very little stretch. The fiber content is 100% polyester.

TOOLS AND EQUIPMENT

- Sewing machine for construction
- Overlocker for finishing raw edges. This may be replaced with a stretch overlock stitch or a zigzag stitch on the sewing machine (overlock or zigzag stitch width 2–3mm, stitch length 2.5mm)
- Buttonhole foot for your sewing machine
- Stitch-in-the-ditch foot for your sewing machine (optional)

PATTERN PIECES LIST

1. From main fabric:

- Front — cut 1 on fold
- Front neckline flounce — cut 2
- Back — cut 1 on fold
- Sleeve — cut 2
- Cuff — cut 4
- Sleeve placket binding — cut 2
- Sleeve flounce — cut 2
- Front neck facing — cut 1 on fold
- Back neck facing — cut 1 on fold

IMPORTANT! Don't forget to transfer all pattern notches onto the fabric.

2. From interfacing:

- Cuff — cut 4
- Front neck facing — cut 1 on fold
- Back neck facing — cut 1 on fold

SEAM ALLOWANCES

Pattern pieces include the following seam allowances:

- Garment hem — 2cm (3/4")
- All the other edges — 1cm (3/8")

Take this into account when laying out the pattern pieces on the fabric.



Transfer the dart lines from the paper pattern to the wrong side of the front and back. Match and pin the dart legs together.

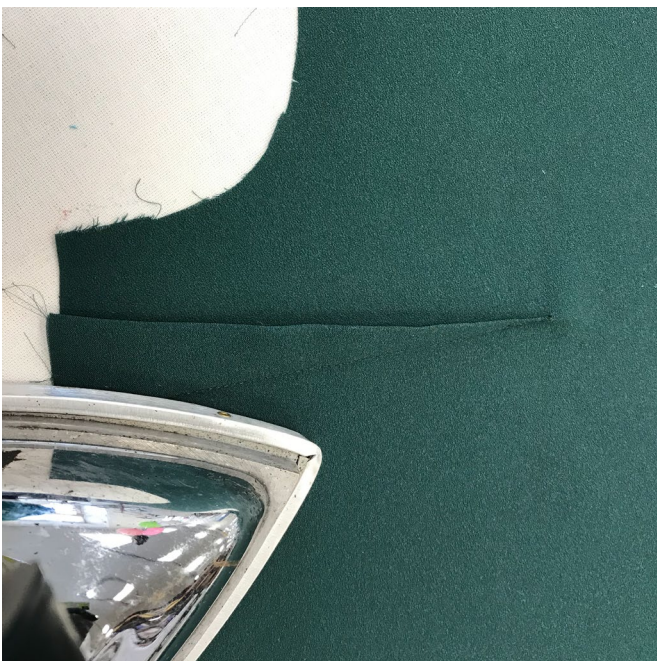
Stitch the darts, moving from the wide end towards the dart point. Backstitch at the beginning only. Leave long thread tails at the end, tie them into a double knot and hide them inside the dart.

Remove the chalk lines by rubbing them with a scrap piece of fabric to ensure that no chalk stains are left after the steam pressing.



Steam press the darts flat.

For sizes 44 and larger, trim the bust dart intake at 1cm (3/8") from the seam. Overlock the raw edge with the bottom side of the dart facing up.



Press the bust darts upwards, press the shoulder darts towards the center.