

# FROM THE FOUNDER OF THE #VIKISEWS BRAND

---



Back in 2016, when I was working on my first set of sewing instructions, I was trying to write them in such a way that even a complete beginner could easily understand and use them to create their very first garment. These instructions laid the foundation for the Vikisews brand, its vision and its mission. I wanted to create modern patterns with the most detailed and clear instructions.

Now, with each new collection we are constantly improving our instructions, amending them and adding more relevant details. By the time the final product reaches you, our drafters, correctors, and editors would have spent weeks perfecting every word and every photograph. If you compile a few of our instructions together, you will get a sewing manual that will assist you in sewing all kinds of garments at any difficulty level.

And I would be very happy if these instructions helped you to turn your hobby into a lifelong passion... Enjoy the process! Create your ultimate dream wardrobe! Wear your garments proudly for years to come!

If you have any questions, please contact us at [info@vikisews.com](mailto:info@vikisews.com) - we are always there to help.



## NURIT PATTERN DESCRIPTION

---

Nurit is a straight, loose-fitting coat, slightly tapered at the bottom, featuring wide horizontal quilting. The coat has front and back princess seams and front inseam pockets. The drop-shoulder sleeves are long and wide. The high standing collar is detachable and is attached with snaps. The coat closes with set-in snaps. Nurit is below-knee length.



## IMPORTANT!

---

The contents of this pattern are copyright protected and belong exclusively to VikiSews. You may use VikiSews patterns for personal use. It is prohibited to share VikiSews patterns and instructions with third parties, as well as to publish patterns and instructions online for public access. According to part 1 of clause 1252 and clause 1301 of the Civil Code of the Russian Federation, failure to comply with the mentioned rules constitutes a breach of the legislation in force in the field of copyright and entails liability of the violator. Illegal use or distribution will be prosecuted in accordance with legislation.

You may use VikiSews patterns for commercial use, to sew custom-made garments and/or create fashion collections, on the condition that the patterns are solely used in a manufacturing setting and are not further shared with individuals.

# TOTAL EASE ALLOWANCE

---

	Bust ease	Waistline ease	Hipline ease	Upper arm ease
cm	56	78	50	27
inches	22	30 3/4	19 5/8	10 5/8

# GARMENT LENGTH, SLEEVE LENGTH

---

Height, cm	Garment length, cm	Sleeve length including shoulder width, cm
1 (154-160)	108.6-109.2	77.8-80.4
2 (162-168)	112.6-113.2	79.8-82.4
3 (170-176)	116.6-117.2	81.8-84.4
4 (178-184)	120.7-121.3	83.8-86.4

Height, ft	Garment length, in	Sleeve length including shoulder width, in
1 (5'1" - 5'3")	42 3/4-43	30 5/8-31 5/8
2 (5'4" - 5'6")	44 3/8-44 5/8	31 3/8-32 1/2
3 (5'7" - 5'9")	45 7/8-46 1/8	32 1/4-33 1/4
4 (5'10" - 6'1")	47 1/2-47 3/4	33-34

# SUGGESTED FABRIC

---

To sew this coat, choose outerwear fabrics with the following properties:

- medium-weight, soft, without stretch, opaque, wind- and water-resistant
- the fiber content can include natural fibers (cotton), artificial fibers (viscose, acetate), blends (cotton + polyester, etc.), and synthetics (polyester, polyester + elastane)
- the following fabrics are recommended: blended raincoat fabrics, dewspo, twill, taffeta, taslan, etc.

For the lining, choose lining fabrics made from artificial fibers (viscose), blends (viscose + elastane, viscose + polyester), or synthetics (polyester, polyester + elastane).

For the insulation layer, use alpolux, isosoft, thinsulate, polyester batting 100 g/m2 + swan down.

Alpolux insulation, 60" wide, in yards:

Height, ft	Size XS-S	Size M-L	Size XL
1 (5'1" - 5'3")	2 3/4	2 7/8	3
2 (5'4" - 5'6")	2 3/4	3	3
3 (5'7" - 5'9")	2 7/8	3 1/8	3 1/8
4 (5'10" - 6'1")	2 7/8	3 1/8	3 1/4

Lightweight knit or woven interfacing, 55" wide, for all sizes, in yards:

Height, ft	Yards
1 (5'1" - 5'3")	1 3/8
2 (5'4" - 5'6")	1 3/8
3 (5'7" - 5'9")	1 3/8
4 (5'10" - 6'1")	1 1/2

**IMPORTANT!** When purchasing fabric, please account for shrinkage and buy 5% more than required.

6. Swan down filling 700-1000g (approximately the volume and weight of a 50x70cm (20x28 in) - 70x70cm (28x28 in) pillow).

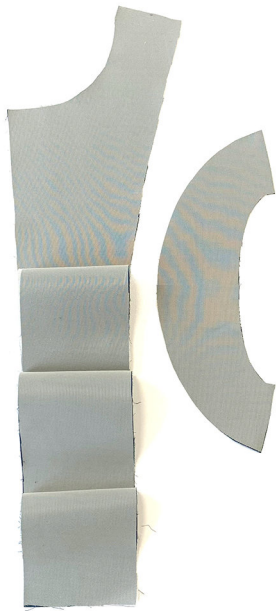
7. 19 set-in snaps, 1,3cm (1/2") in diameter

8. 2 spools of thread matching the main fabric, 1 spool of thread matching the lining.

## TOOLS AND EQUIPMENT

- sewing machine for construction
- walking foot for quilting
- edgestitch foot for the sewing machine (optional)
- snap setting tool.

If you don't have the tools or experience to install the snaps yourself, you can always take your coat to a tailor or a clothing repair shop and have them install the snaps for you.



We recommend testing your interfacing and/or fusible tape on a scrap of fabric before applying it to the pattern pieces. Check the iron's settings including temperature and steam settings (check if it's safe to use steam on your main fabric). Check how long it takes for the interfacing to bond.

Fully interface the following pieces:

- front facing - 2 pieces
- back neck facing - 1 piece

Partially interface the following pieces:

• back - 1 piece. Interface the neckline edge with stitch-reinforced fusible bias tape. Interface the shoulder edges with straight grain stay tape. Interface the snap placement with 2x2cm (3/4x3/4") squares of interfacing.

• front - 2 pieces. Interface the neckline edge with stitch-reinforced fusible bias tape. Interface the pocket opening with the grown-on pocket facing so that the interfacing covers the front piece by 1cm (3/8"). Interface the snap placement with 2x2cm (3/4x3/4") squares of interfacing.

• stand - 1 piece. Interface the side and bottom edges with strips of interfacing.

• placket - 1 piece. Interface one half along the long edge.

Interfacing pieces should be cut on grain (parallel to the selvedge lengthwise).

To interface, position the gluey side of the interfacing piece onto the wrong side of the fabric piece (or part of it) and press.

