

FROM THE FOUNDER OF THE #VIKISEWS BRAND



Back in 2016, when I was working on my first set of sewing instructions, I was trying to write them in such a way that even a complete beginner could easily understand and use them to create their very first garment. These instructions laid the foundation for the Vikisews brand, its vision and its mission. I wanted to create modern patterns with the utmost detailed and clear instructions.

Now, with each new collection we are constantly improving our instructions, amending them and adding more relevant details. By the time the final product reaches you, our drafters, correctors, and editors would have spent weeks perfecting every word and every photograph. If you compile a few of our instructions together, you will get a sewing manual that will assist you in sewing all kinds of garments at any difficulty level.

And I would be very happy if these instructions helped you to turn your hobby into a lifelong passion... Enjoy the process! Create your ultimate dream wardrobe! Wear your garments proudly for years to come!

If you have any questions, please contact us at info@vikisews.com - we are always there to help.



ELIZA PATTERN DESCRIPTION

Eliza is a close-fitting dress. The front of the dress consists of two parts: the main front part and the bodice overlay. The main front part has bust darts starting at the side seam and a deep plunging neckline that extends below the bust level. The front bodice overlay features a decorative twist at the bust level and a deep V-neckline. The set-in sleeves are long and close-fitting. Eliza is below-knee length.



IMPORTANT!

The contents of this pattern are copyright protected and belong exclusively to VikiSews. You may use VikiSews patterns for personal use. It is prohibited to share VikiSews patterns and instructions with third parties, as well as to publish patterns and instructions online for public access. According to part 1 of clause 1252 and clause 1301 of the Civil Code of the Russian Federation, failure to comply with the mentioned rules constitutes a breach of the legislation in force in the field of copyright and entails liability of the violator. Illegal use or distribution will be prosecuted in accordance with legislation.

You may use VikiSews patterns for commercial use, to sew custom-made garments and/or create fashion collections, on the condition that the patterns are solely used in a manufacturing setting and are not further shared with individuals.

TOTAL EASE ALLOWANCE

	Bust ease	Waistline ease	Hipline ease	Upper arm ease
cm	-5.1	6.3	-1	-0.5
inches	-2	2 1/2	-3/8	-1/4

GARMENT LENGTH, SLEEVE LENGTH

Height, cm	Center back length (estimated), cm	Sleeve length, cm
1 (154–160)	116.2–118	60.3–61
2 (162–168)	120.2–122	62.3–63
3 (170–176)	124.2–126	64.3–65
4 (178–184)	128.2–130	66.3–67

Height, ft	Center back length (estimated), in	Sleeve length, in
1 (5'1"–5'3")	45 3/4–46 1/2	23 3/4–24
2 (5'4"–5'6")	47 3/8–48	24 1/2–24 3/4
3 (5'7"–5'9")	48 7/8–49 5/8	25 3/8–25 5/8
4 (5'10"–6'1")	50 1/2–51 1/8	26 1/8–26 3/8

SUGGESTED FABRIC

To sew this dress, choose knit fabrics with the following properties:

- medium-weight, soft, pliable, stretchy (with elastane)
- the fiber content can include natural fibers (wool, cotton), artificial fibers (viscose), blends (wool + polyester, cotton + polyester, cotton + elastane, etc.), and synthetics (polyester, polyester + elastane)
- the following fabrics are recommended: sweater knits, Ponte di Roma, knits, ribbed knits.

Attention! We do not recommend lightweight sheer fabrics (chiffon, organza, stretch lace).

The dress in the photos is made of soft pliable sweater knit. The fiber content is 45% viscose + 33% polyester + 22% nylon.

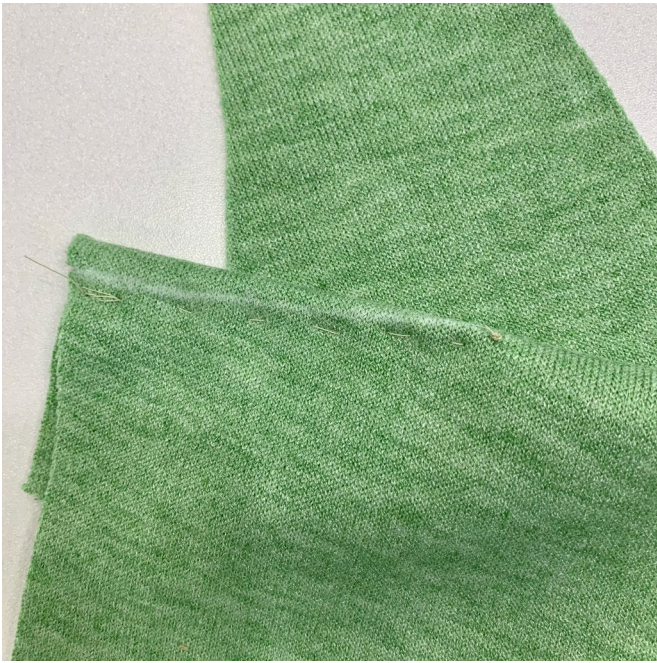
IMPORTANT! When purchasing fabric, please account for shrinkage and buy 5% more than required.

2. Lightweight knit interfacing, 140cm (55") wide, for all sizes and heights – 0.1m (1/8yd). Can be replaced with premade straight-grain fusible stay tape – 0.1m (1/8yd).
3. Fold-over elastic binding, 1 cm (3/8") wide – 1.5–3m (1 5/8–3 1/4yd), depending on the size. Measure the pattern pieces to find the exact length. (This premade fold-over elastic is often used in lingerie making. It can be replaced with 1cm (3/8") wide clear elastic.)
4. Matching thread – 5 spools (1 spool for the sewing machine + 4 spools for the overlocker).

TOOLS AND EQUIPMENT

- sewing machine for construction
- overlocker for construction and finishing raw edges. This may be replaced with a stretch overlock stitch or a zigzag stitch on the sewing machine (overlock or zigzag stitch width 2–3mm, stitch length 2.5mm)
- coverstitch or coverlock machine for finishing the neckline edges, garment and sleeve hems. It can be replaced with a twin needle on a regular sewing machine that can do a zigzag stitch
- ballpoint machine needles.

IMPORTANT! We recommend using specialty needles when working with knit fabrics (for example, STRETCH, SUPER STRETCH, JERSEY, etc.). These are ballpoint needles, so they part the threads of the fabric you are stitching rather than piercing them.



Use the markings to match the dart legs on the wrong side of the front piece, pin, baste. Baste 2mm from the seam line so that the basting doesn't get caught in with the stitching.



Machine-stitch the darts, starting at the side edge and moving toward the dart point. Backstitch at the beginning of the seam. At the end of the seam, leave long thread tails, tie them into a knot and hide them between the dart layers using a large eye needle.

