

# FROM THE FOUNDER OF THE #VIKISEWS BRAND

---



Back in 2016, when I was working on my first set of sewing instructions, I was trying to write them in such a way that even a complete beginner could easily understand and use them to create their very first garment. These instructions laid the foundation for the Vikisews brand, its vision and its mission. I wanted to create modern patterns with the utmost detailed and clear instructions.

Now, with each new collection we are constantly improving our instructions, amending them and adding more relevant details. By the time the final product reaches you, our drafters, correctors, and editors would have spent weeks perfecting every word and every photograph. If you compile a few of our instructions together, you will get a sewing manual that will assist you in sewing all kinds of garments at any difficulty level.

And I would be very happy if these instructions helped you to turn your hobby into a lifelong passion... Enjoy the process! Create your ultimate dream wardrobe! Wear your garments proudly for years to come!

If you have any questions, please contact us at [info@vikisews.com](mailto:info@vikisews.com) — we are always there to help.



## FABIA PATTERN DESCRIPTION

---

Fabia is a close-fitting dress with an accentuated waist. It features a waist seam, bust darts on the front, and waist darts on the front and back. The skirt is cut on a bias and is flaring out towards the bottom. There is an invisible zipper fastening in the side seam. Fabia features a deep V-shaped neckline that is finished with sheer dress netting. The dress has long fitted set-in sleeves with pleats around the sleeve cap area. Fabia is fully-lined and maxi length.



## IMPORTANT!

---

The contents of this pattern are copyright protected and belong exclusively to Vikisews. You may use Vikisews patterns for personal use. It is prohibited to share Vikisews patterns and instructions with third parties, as well as to publish patterns and instructions online for public access. According to part 1 of clause 1252 and clause 1301 of the Civil Code of the Russian Federation, failure to comply with the mentioned rules constitutes a breach of the legislation in force in the field of copyright and entails liability of the violator. Illegal use or distribution will be prosecuted in accordance with legislation.

You may use Vikisews patterns for commercial use, to sew custom-made garments and/or create fashion collections, on the condition that the patterns are solely used in a manufacturing setting and are not further shared with individuals.

# TOTAL EASE ALLOWANCE

	Bust ease	Waistline ease	Hipline ease	Upper arm ease
cm	7.5	4.2	7.1–12.5	5
inches	3	1 5/8	2 3/4–4 7/8	2

# GARMENT LENGTH, SLEEVE LENGTH

Height, cm	Length at center back, cm	Sleeve length, cm
1 (154–160)	144–145.8	62.6–66.2
2 (162–168)	148–149.8	64.5–67.9
3 (170–176)	152–153.8	66.3–69.7
4 (178–184)	156–157.8	68.2–71.5
Height, ft	Length at center back, in	Sleeve length, in
1 (5'1"–5'3")	56 3/4–57 3/8	24 5/8–26 1/8
2 (5'4"–5'6")	58 1/4–59	25 3/8–26 3/4
3 (5'7"–5'9")	59 7/8–60 1/2	26 1/8–27 1/2
4 (5'10"–6'1")	61 3/8–62 1/8	26 7/8–28 1/8

# SUGGESTED FABRIC

To sew the dress, choose dress-weight fabrics with the following properties:

- medium-weight, soft, breathable, with good drape, non-stretch or with very little stretch, opaque
- the fiber content can include natural fibers (silk, cotton), artificial fibers (viscose), blends (silk + elastane, silk + viscose, etc.) and synthetics (polyester + elastane)
- the following fabrics are recommended: silk, faux silk, satin, crepe, velvet with a silk backing and some elastane content

**Attention!** We do not recommend stretchy knit fabrics or lightweight sheer fabrics (chiffon, organza, stretch lace).

For the lining, choose lining fabrics made of natural fibers (silk), artificial fibers (viscose), blends (silk + elastane, viscose + elastane) and synthetics (polyester + elastane).

The dress in the photo is made of dress-weight silk. This fabric is medium-weight, soft, has good drape and no stretch. The fiber content is silk + viscose. The lining fabric is viscose + elastane. Additionally, the front center panel is made of dress netting.

2. Lining fabric, 145 cm wide, in meters:

Height, cm	Size									
	34	36	38	40	42	44	46	48	50	52
1 (154–160)	2.15	2.19	2.23	2.27	2.33	2.39	2.44	2.52	2.57	2.63
2 (162–168)	2.21	2.25	2.3	2.36	2.41	2.47	2.52	2.6	2.67	2.72
3 (170–176)	2.26	2.32	2.38	2.43	2.49	2.55	2.62	2.66	2.69	2.73
4 (178–184)	2.35	2.4	2.46	2.51	2.57	2.62	2.68	2.68	2.74	2.74

Lining fabric, 57" wide, in yards:

Height, ft	Size									
	34	36	38	40	42	44	46	48	50	52
1 (5'1"–5'3")	2 3/8	2 3/8	2 1/2	2 1/2	2 1/2	2 5/8	2 5/8	2 3/4	2 3/4	2 7/8
2 (5'4"–5'6")	2 3/8	2 1/2	2 1/2	2 5/8	2 5/8	2 3/4	2 3/4	2 7/8	2 7/8	3
3 (5'7"–5'9")	2 1/2	2 1/2	2 5/8	2 5/8	2 3/4	2 3/4	2 7/8	2 7/8	3	3
4 (5'10"–6'1")	2 5/8	2 5/8	2 3/4	2 3/4	2 3/4	2 7/8	2 7/8	2 7/8	3	3

**IMPORTANT!** When purchasing fabric, please account for shrinkage and buy 5% more than required.

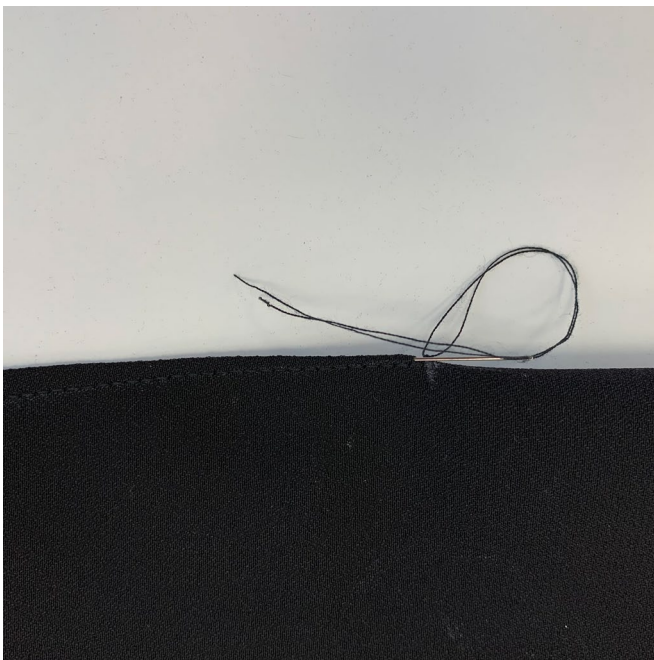
3. Stiff tulle or dress netting fabric for the front center panel – 20 cm (7 7/8")
4. Net fabric of medium stiffness for sleeve heads – 20 cm (7 7/8")
5. Bra cups (to size) – 1 pair
6. Stitched bias-cut fusible stay tape with stitch reinforcement

Sizes	34	36	38	40	42	44	46	48	50	52
Length, m	1.27	1.28	1.3	1.32	1.34	1.36	1.38	1.4	1.42	1.44
Length, yd	1 3/8	1 3/8	1 3/8	1 1/2	1 1/2	1 1/2	1 1/2	1 1/2	1 1/2	1 5/8

7. An invisible zipper, 30 cm (11 3/4") long for all sizes in all heights
8. Matching thread – 5 spools (1 spool for the sewing machine + 4 spools for the overlocker)



With the wrong side facing up, align together marked dart legs of the front and back pieces, pin and baste. Baste 2 mm away from the stitch line to prevent basting thread being caught in the seam.



Machine-sew, stitching from the edge of the bodice to the dart apex. Backstitch at the beginning of the seam, but leave long thread tails at the end of the seam, tie a knot and hide the thread tails inside the dart using a big-eyed needle.