

FROM THE FOUNDER OF THE #VIKISEWS BRAND

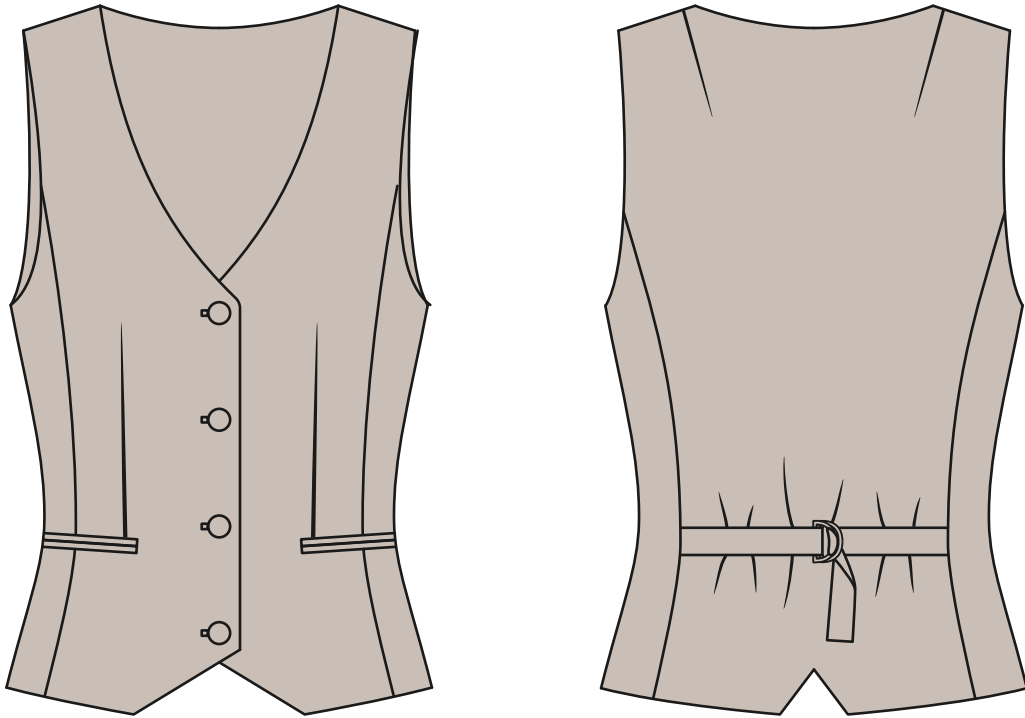


Back in 2016, when I was working on my first set of sewing instructions, I was trying to write them in such a way that even a complete beginner could easily understand and use them to create their very first garment. These instructions laid the foundation for the Vikisews brand, its vision and its mission. I wanted to create modern patterns with the utmost detailed and clear instructions.

Now, with each new collection we are constantly improving our instructions, amending them and adding more relevant details. By the time the final product reaches you, our drafters, correctors, and editors would have spent weeks perfecting every word and every photograph. If you compile a few of our instructions together, you will get a sewing manual that will assist you in sewing all kinds of garments at any difficulty level.

And I would be very happy if these instructions helped you to turn your hobby into a lifelong passion... Enjoy the process! Create your ultimate dream wardrobe! Wear your garments proudly for years to come!

If you have any questions, please contact us at info@vikisews.com - we are always there to help.



LILIANA PATTERN DESCRIPTION

Liliana is a semi-fitted vest. Its bust darts have been transferred to the princess seams and the double welt pocket line. The back features shoulder darts and princess seams, as well as tabs that fasten with a D-ring to further cinch in the waist. The back hem features an inverted V-shaped detail. The vest has a center fastening with four buttons and buttonholes, and is fully lined. Liliana is high-hip length.

Important! Liliana has been designed to be worn as a stand-alone piece, without an underlayer, and as such the armhole level is relatively high. If you're planning on wearing this vest over a sweater or a blouse, we recommend deepening the armhole for increased comfort.



IMPORTANT!

The contents of this pattern are copyright protected and belong exclusively to VikiSews. You may use VikiSews patterns for personal use. It is prohibited to share VikiSews patterns and instructions with third parties, as well as to publish patterns and instructions online for public access. According to part 1 of clause 1252 and clause 1301 of the Civil Code of the Russian Federation, failure to comply with the mentioned rules constitutes a breach of the legislation in force in the field of copyright and entails liability of the violator. Illegal use or distribution will be prosecuted in accordance with legislation.

You may use VikiSews patterns for commercial use, to sew custom-made garments and/or create fashion collections, on the condition that the patterns are solely used in a manufacturing setting and are not further shared with individuals.

TOTAL EASE ALLOWANCE

	Bust ease	Waistline ease
cm	7.2–10.2	8.4–10
inches	2 7/8–4	3 1/4–3 7/8

GARMENT LENGTH

Height, cm	Garment length, cm	Height, ft	Garment length, in
1 (154–160)		1 (5'1"–5'3")	19 1/8
2 (162–168)	48.5–48.6	2 (5'4"–5'6")	20 3/8
3 (170–176)	51.6	3 (5'7"–5'9")	21 1/2
4 (178–184)	54.5–54.6	4 (5'10"–6'1")	22 5/8
	57.6		

SUGGESTED FABRIC

To sew this vest, choose woven fabrics with the following properties:

- Medium weight, soft, structured, non-stretch or with very little stretch
- The fiber content can include natural fibers (wool, silk, cotton, linen), artificial (viscose), blends (wool + silk, wool + polyester, cotton + viscose, etc.), and synthetic (polyester, polyester + elastane)
- The following fabrics are recommended: wool suiting, cotton, linen, crepe, gabardine, denim

For the lining, we recommend artificial fibers (viscose), blends (viscose + elastane, viscose + polyester), or synthetic fibers (polyester, polyester + elastane).

The vest in the photo is made of 100% linen. This material is soft and non-stretch. The lining is 100% viscose.

PATTERN PIECES LIST

1. From main fabric:

- Front – cut 2
- Side front – cut 2
- Back – cut 1 on fold
- Side back – cut 2
- Back neck facing – cut 1 on fold
- Front facing – cut 2
- Left tab – cut 1
- Right tab – cut 1
- Top welt – cut 2
- Bottom welt – cut 2
- Bottom pocket bag – cut 2

2. From lining:

- Front lining – cut 2
- Side front lining – cut 2
- Back lining – cut 1 on fold
- Side back lining – cut 2
- Top pocket bag lining – cut 2

3. From interfacing:

- Front – cut 2
- Side front – cut 2
- Back – cut 1 on fold
- Side back – cut 2
- Back neck facing – cut 1 on fold
- Front facing – cut 2
- Left tab – cut 1
- Right tab – cut 1
- Top welt – cut 2
- Bottom welt – cut 2

IMPORTANT! Don't forget to transfer all pattern markings and notches onto the fabric.

You will also need to cut two strips of interfacing to reinforce the pocket opening (measure the length on the pattern piece). The grainline on the strips is along the long side (along the interfacing selvedge). Apply fusible stay tape along the armhole edges on the back and front pieces, as well as the back and front side panels; neckline edges on the back and front pieces, front shoulder edges, bottom edge of the front and along the inverted V detail on the back piece. The stay tape is fused at 8mm (just under 3/8") from the edge.



Block fuse the cut of main material, then cut out the pattern pieces.

Do not interface the bottom pocket bag pieces.

Additionally, interface the following with stitched straight-grain fusible stay tape:

- Armscye edges on front, back, side front, and side back pieces
- Neckline edge on front and back pieces
- Shoulder edges on front pieces
- Bottom edge on front pieces
- Inverted V detail edges on back piece

The stay tape is fused at 8mm (just under 3/8") from the edge.

Also interface the pocket placement with a strip of interfacing (measure length on pattern piece).

Prior to interfacing the main garment pieces, we recommend to test and interface and/or apply fusible stay tape to a scrap piece of the main material. Also check your iron settings: what temperature suits your fabric, can the interfacing be applied with steam, as well as the time needed to hold the iron over the interfacing for perfect adhesion.

To interface, put the gluey side of the interfacing on top of the wrong side of the fabric piece (or a section thereof) and press with the iron. Do not iron the piece, but instead press it section by section, holding it down with the iron a few seconds until that section is adhered and then pressing down the next section. You may use a cotton pressing cloth to protect your iron sole. Once the interfacing process complete, leave the piece on a hard flat surface for 15 minutes for it to cool down.