

FROM THE FOUNDER OF THE #VIKISEWS BRAND

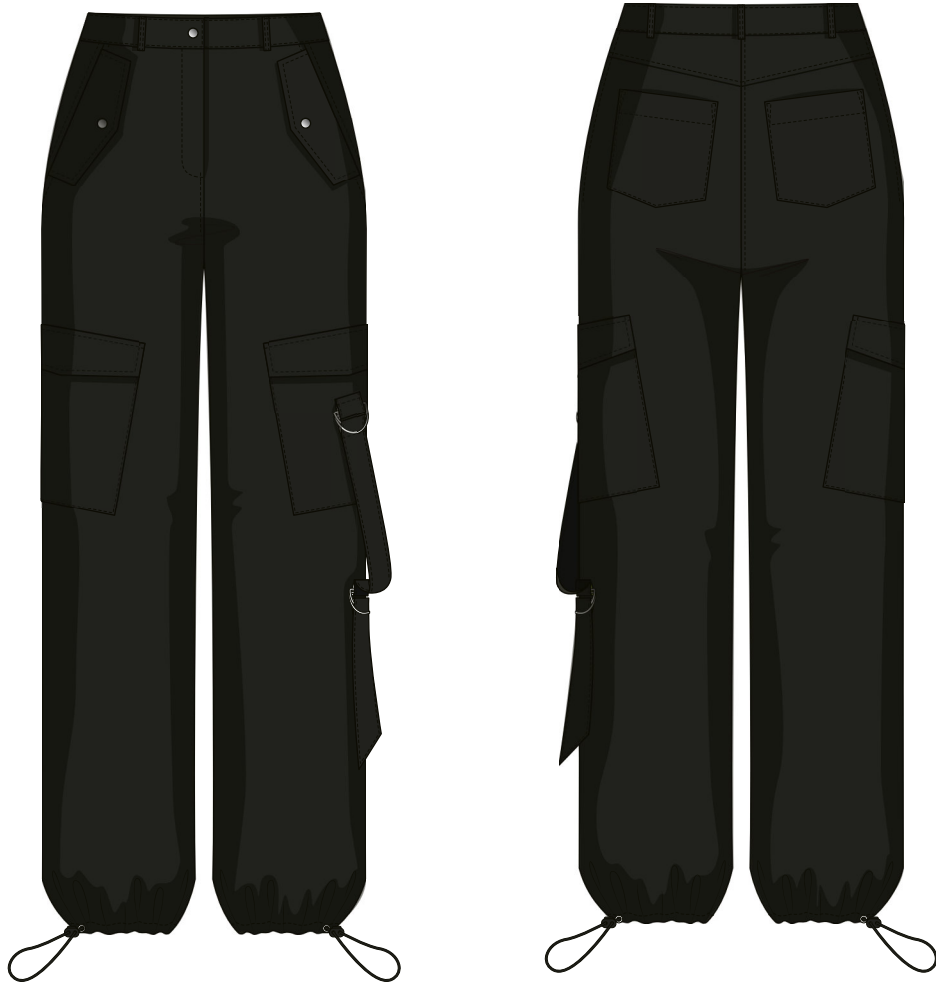


Back in 2016, when I was working on my first set of sewing instructions, I was trying to write them in such a way that even a complete beginner could easily understand and use them to create their very first garment. These instructions laid the foundation for the Vikisews brand, its vision and its mission. I wanted to create modern patterns with the utmost detailed and clear instructions.

Now, with each new collection we are constantly improving our instructions, amending them and adding more relevant details. By the time the final product reaches you, our drafters, correctors, and editors would have spent weeks perfecting every word and every photograph. If you compile a few of our instructions together, you will get a sewing manual that will assist you in sewing all kinds of garments at any difficulty level.

And I would be very happy if these instructions helped you to turn your hobby into a lifelong passion... Enjoy the process! Create your ultimate dream wardrobe! Wear your garments proudly for years to come!

If you have any questions, please contact us at info@vikisews.com - we are always there to help.



DERYLL PATTERN DESCRIPTION

Deryll is a pair of semi-fitted, straight-cut trousers with decorative topstitching. The waistband features topstitched belt loops. The garment has slash pockets with flaps on the front, a yoke and patch pockets on the back, and two patch pockets with flaps on the sides. The left side patch pocket features a decorative strap. The trousers close with a fly front zipper. An elastic cord with a stopper is threaded through the casing at the garment hem. The trousers are floor length.



IMPORTANT!

The contents of this pattern are copyright protected and belong exclusively to Vikisews. You may use Vikisews patterns for personal use. It is prohibited to share Vikisews patterns and instructions with third parties, as well as to publish patterns and instructions online for public access. According to part 1 of clause 1252 and clause 1301 of the Civil Code of the Russian Federation, failure to comply with the mentioned rules constitutes a breach of the legislation in force in the field of copyright and entails liability of the violator. Illegal use or distribution will be prosecuted in accordance with legislation.

You may use Vikisews patterns for commercial use, to sew custom-made garments and/or create fashion collections, on the condition that the patterns are solely used in a manufacturing setting and are not further shared with individuals.

TOTAL EASE ALLOWANCE

	Waistline ease	Hipline ease
cm	8.3–8.4	5.7–7.3
inches	3 1/4	2 1/4–2 7/8

GARMENT LENGTH

Height, cm	Side seam length including waistband, cm	Height, ft	Side seam length including waistband, in
1 (154–160)	99.2–100.9	1 (5'1"–5'3")	39–39 3/4
2 (162–168)	103.5–105.2	2 (5'4"–5'6")	40 3/4–41 3/8
3 (170–176)	107.8–109.5	3 (5'7"–5'9")	42 1/2–43 1/8
4 (178–184)	112.1–113.8	4 (5'10"–6'1")	44 1/8–44 3/4

Finished hem width, all heights

	34	36	38	40	42	44	46	48	50	52
cm	26.6	27	27.5	27.9	28.4	28.8	29.3	29.7	30.2	30.6
inches	10 1/2	10 5/8	10 7/8	11	11 1/8	11 3/8	11 1/2	11 3/4	11 7/8	12

SUGGESTED FABRIC

To sew the trousers, choose fabrics with the following properties:

- Medium weight, malleable, breathable, non-stretch or with very little stretch, opaque
- The fiber content can include natural fibers (cotton) or blends (cotton + viscose, etc.)
- The following fabrics are recommended: twill, denim, corduroy

Attention! We do not recommend stretchy knit materials and lightweight sheer fabrics (chiffon, organza, stretch lace).

For the pocket bags, we recommend using cotton, challis or poplin.

The garment in the photo is made of denim. The fabric is medium weight, malleable and with little stretch. The fiber content for the pocket bags is 100% cotton.

PATTERN PIECES LIST

1. From main fabric:

- Front leg — cut 2
- Back leg — cut 2
- Back yoke — cut 2
- Slash pocket — cut 2
- Patch pocket — cut 2
- Side patch pocket — cut 2
- Side patch pocket flap — cut 4
- Slash pocket flap — cut 4
- Right waistband — cut 2
- Left waistband — cut 2
- Strap — cut 1 on fold
- Strap loop — cut 1
- Pocket bag — cut 2
- Belt loop — cut 1 (5 pieces)
- Fly shield — cut 1 on fold

2. From lining fabric:

- Pocket bag — cut 2

***IMPORTANT!** Don't forget to transfer all pattern notches onto the fabric.*

3. From interfacing:

- Right waistband — cut 2
- Left waistband — cut 2
- Side patch pocket flap — cut 2
- Slash pocket flap — cut 2

Additionally, cut the following from interfacing:

- Four 3 cm (1 1/8") wide strips (length according to the paper pattern) to be attached to the top edge of the back patch pockets and the top edge of the side patch pockets
- One 4 cm (1 5/8") wide strip (length according to the paper pattern) to be attached to the fly front seam allowance on the right front leg
- One 1.5 cm (5/8") wide strip (length according to the paper pattern) to be attached to the zipper seam allowance on the left front leg
- Two 3x5 cm (1 1/8" by 2") strips to be attached to the eyelet placement sections on the back and front legs
- Six 3x3 cm (1 1/8" by 1 1/8") square pieces to be attached to the snap placement sections on the front: slash pocket flaps, right and left waistband pieces

SEAM ALLOWANCES

All pattern pieces include seam allowances:

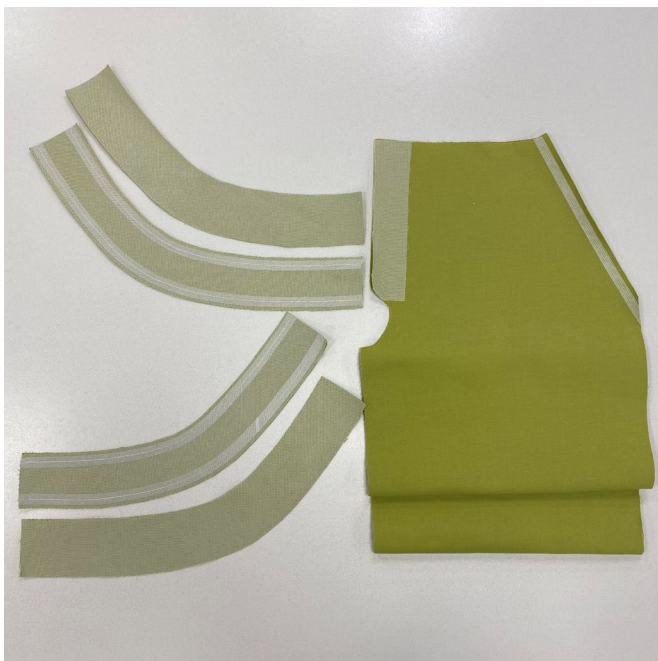
- Garment hem — 3 cm (1 1/8")
- Top edge of the patch pocket — 3 cm (1 1/8")
- Top edge of the side patch pocket — 3 cm (1 1/8")
- All the other edges — 1 cm (3/8")

Take this into account when laying out the pattern pieces on the fabric.



Transfer the center front line from the pattern to the front leg pieces with hand basting stitches.

Use light-colored thread for hand stitching in order to prevent the fabric from being stained during steam pressing.

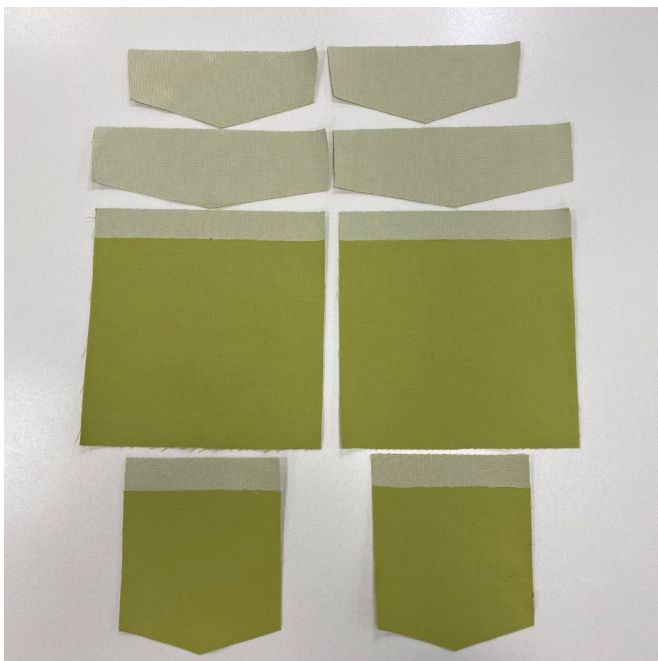


Fully interface the following pieces:

- Left waistband — 2 pieces
- Right waistband — 2 pieces
- Slash pocket flap — 2 pieces
- Side patch pocket flap — 2 pieces

Partially interface the following pieces:

- Top edge seam allowance of the back patch pocket
- Top edge seam allowance of the side patch pocket
- Fly front on the right front leg
- Zipper seam allowance on the left front leg
- Eyelet placement sections on the back and front legs
- Snap placement sections on the slash pocket flaps, right and left waistband pieces on the front



Apply fusible stay tape to the following pieces:

- Top and bottom edges of the right waistband
- Top and bottom edges of the left waistband
- Slash pocket openings on the front legs
- Flap seam allowances on the slash pocket pieces