

# FROM THE FOUNDER OF THE #VIKISEWS BRAND

---

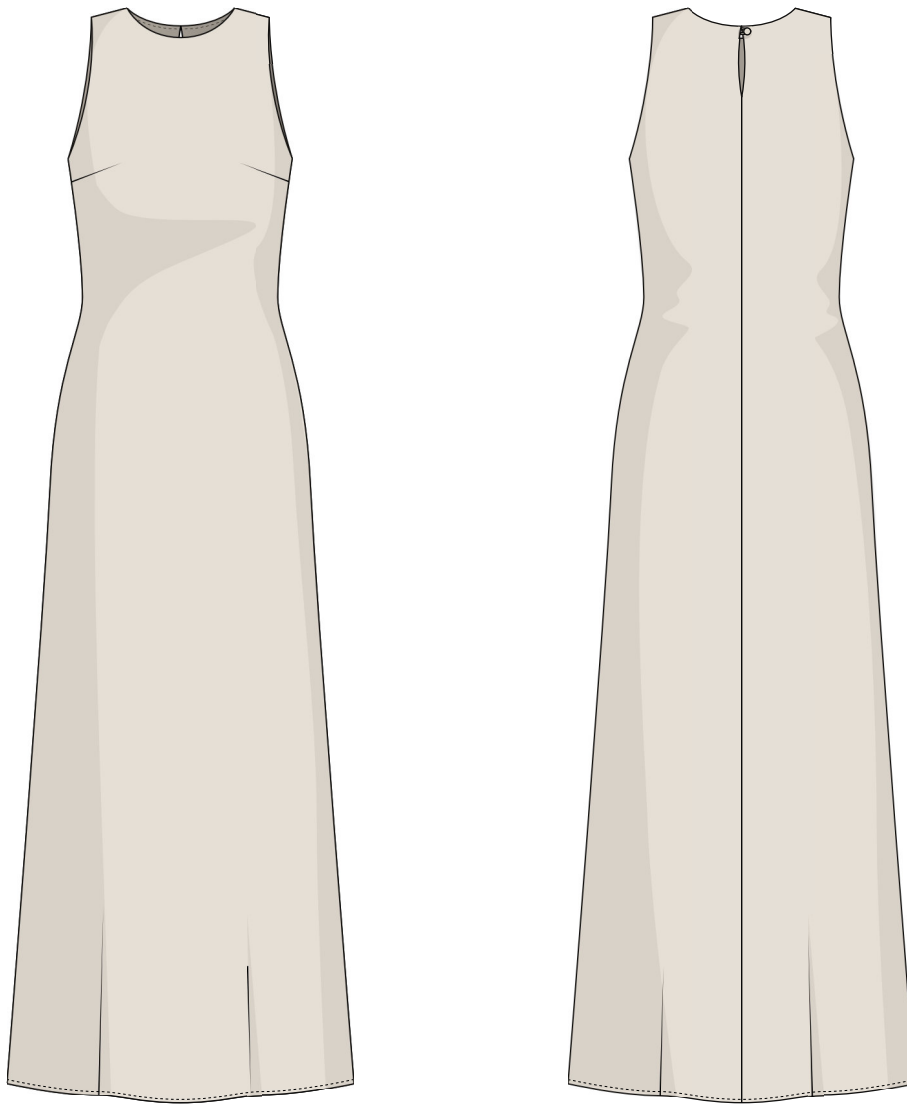


Back in 2016, when I was working on my first set of sewing instructions, I was trying to write them in such a way that even a complete beginner could easily understand and use them to create their very first garment. These instructions laid the foundation for the Vikisews brand, its vision and its mission. I wanted to create modern patterns with the utmost detailed and clear instructions.

Now, with each new collection we are constantly improving our instructions, amending them and adding more relevant details. By the time the final product reaches you, our drafters, correctors, and editors would have spent weeks perfecting every word and every photograph. If you compile a few of our instructions together, you will get a sewing manual that will assist you in sewing all kinds of garments at any difficulty level.

And I would be very happy if these instructions helped you to turn your hobby into a lifelong passion... Enjoy the process! Create your ultimate dream wardrobe! Wear your garments proudly for years to come!

If you have any questions, please contact us at [info@vikisews.com](mailto:info@vikisews.com) — we are always there to help.



## AILYN PATTERN DESCRIPTION

---

Ailyn is a close-fitting dress cut on a bias. It features bust darts on the front and a neck opening in the center back seam. The neckline is round. The dress closes at the back neck with a button and a rouleau button loop. Ailyn is fully lined and is mid-calf length.



## IMPORTANT!

---

The contents of this pattern are copyright protected and belong exclusively to Vikisews. You may use Vikisews patterns for personal use. It is prohibited to share Vikisews patterns and instructions with third parties, as well as to publish patterns and instructions online for public access. According to part 1 of clause 1252 and clause 1301 of the Civil Code of the Russian Federation, failure to comply with the mentioned rules constitutes a breach of the legislation in force in the field of copyright and entails liability of the violator. Illegal use or distribution will be prosecuted in accordance with legislation.

You may use Vikisews patterns for commercial use, to sew custom-made garments and/or create fashion collections, on the condition that the patterns are solely used in a manufacturing setting and are not further shared with individuals.

## TOTAL EASE ALLOWANCE

---

	Bust ease	Waistline ease	Hipline ease
cm	2.4–7.3	10.1–14.1	10.7
inches	1–2 7/8	4–5 1/2	4 1/4

## GARMENT LENGTH

---

Height, cm	Length at center back, cm	Height, ft	Length at center back, in
1 (154–160)	119.5–121.3	1 (5'1"–5'3")	47–47 3/4
2 (162–168)	123.5–125.2	2 (5'4"–5'6")	48 5/8–49 1/4
3 (170–176)	127.5–129.2	3 (5'7"–5'9")	50 1/4–50 7/8
4 (178–184)	131.6–133.2	4 (5'10"–6'1")	51 3/4–52 1/2

## SUGGESTED FABRIC

---

To sew the dress, choose blouse and dress-weight fabrics with the following properties:

- medium weight, malleable, breathable, soft, non-stretch or with very little stretch, opaque
- the fiber content can include natural fibers (silk, cotton, linen), artificial fibers (viscose), blends (wool + silk, wool + polyester, cotton + viscose, etc.), and synthetics (polyester, polyester + elastane)
- the following fabrics are recommended: natural silk, faux silk, crepe satin, dress-weight viscose

**Attention!** We do not recommend stretchy knit materials and lightweight sheer fabrics (chiffon, organza, stretch lace).

For the lining, use the same fabric as for the main garment. This is of crucial importance when it comes to cutting on a bias. Even a slight difference in the properties of the fabrics used for the main garment and the lining may result in the garment losing its shape.

The dress in the photo is made of dress-weight silk. This fabric is medium weight, malleable, soft and with very little stretch. The fiber content is 100% polyester.

# TOOLS AND EQUIPMENT

---

- Sewing machine for construction
- Overlocker for finishing raw edges. This may be replaced with a stretch overlock stitch or a zigzag stitch on the sewing machine (overlock or zigzag stitch width 2–3mm, stitch length 2.5mm).
- Stitch-in-the-ditch foot for the sewing machine (optional)

# PATTERN PIECES LIST

---

## 1. From main fabric:

- Back — cut 2 + cut 2 lining
- Front — cut 1 + cut 1 lining

*IMPORTANT! Don't forget to transfer all pattern markings and notches onto the fabric.*

# SEAM ALLOWANCES

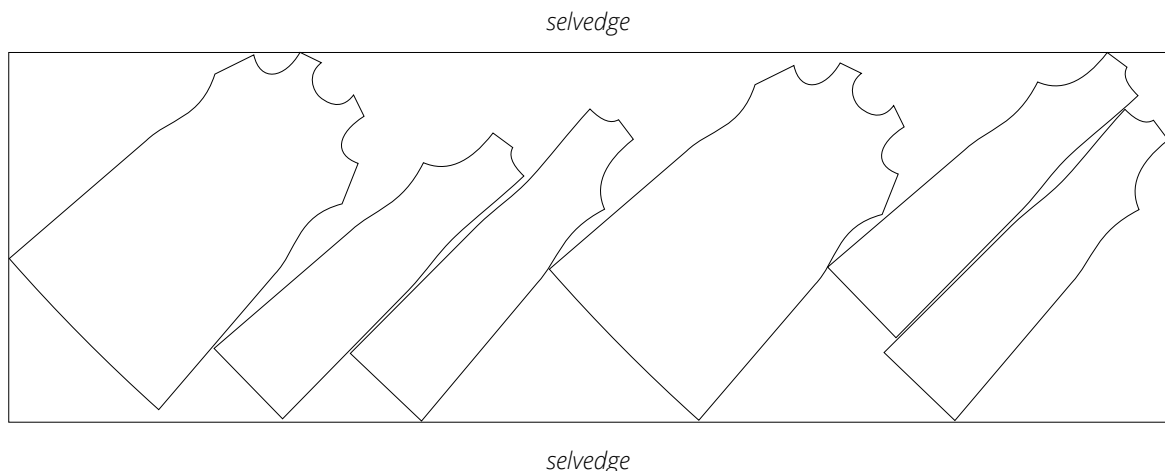
---

All pattern pieces include seam allowances: 1 cm (3/8") for all edges.  
Take this into account when laying out the pattern pieces on the fabric.

# CUTTING LAYOUT

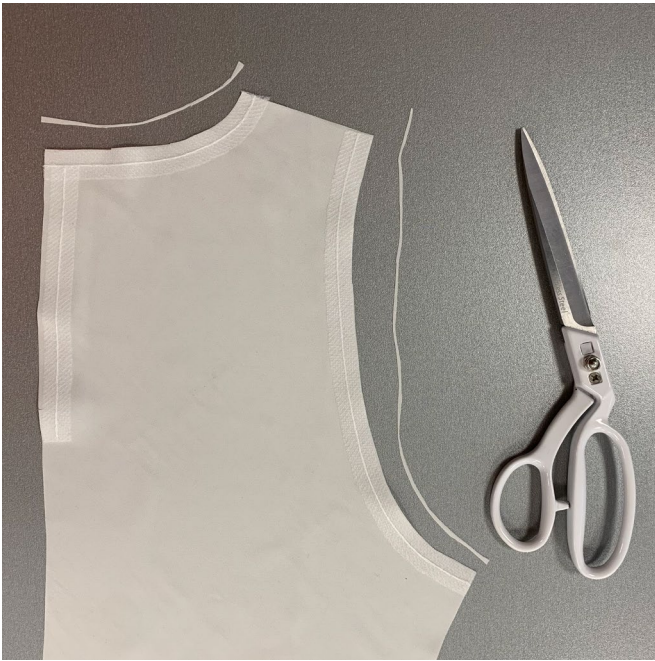
---

Main fabric, 135 cm (53") / 140 cm (55") / 145cm (57") wide, cut on a single layer,  
for all sizes in all heights, with a directional print

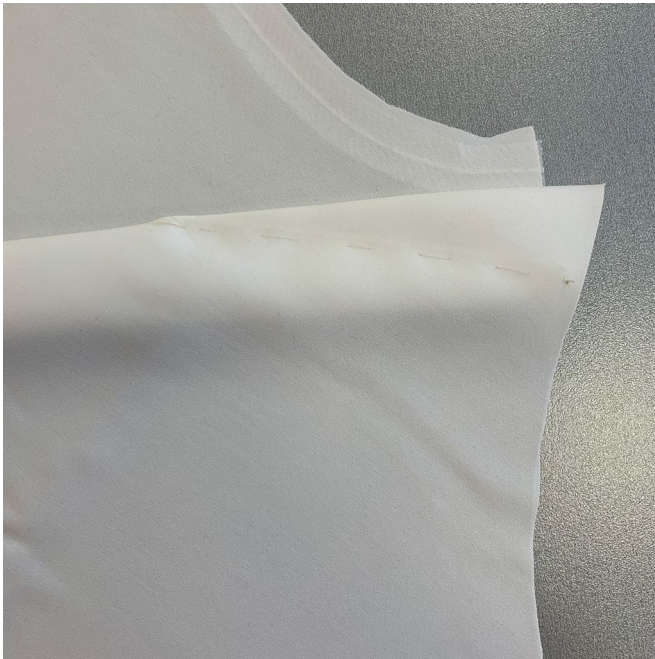


**READY? LET'S GET SEWING!**

---



Trim the neckline and armhole edges on the front lining and back lining pieces by 2 mm (1/16").



Match the dart legs on the wrong side of the front according to the marking, pin and baste at 2 mm (1/16") from the seam line in order to avoid the basting thread being caught in the stitching.

Machine-stitch from the side edge up to the dart apex. Backstitch at the beginning. Leave long thread tails at the end, tie a knot and hide the thread tail inside the dart using a large-eyed needle.

Do the same with the darts on the front lining.



Press the darts flat.