

# FROM THE FOUNDER OF THE #VIKISEWS BRAND

---

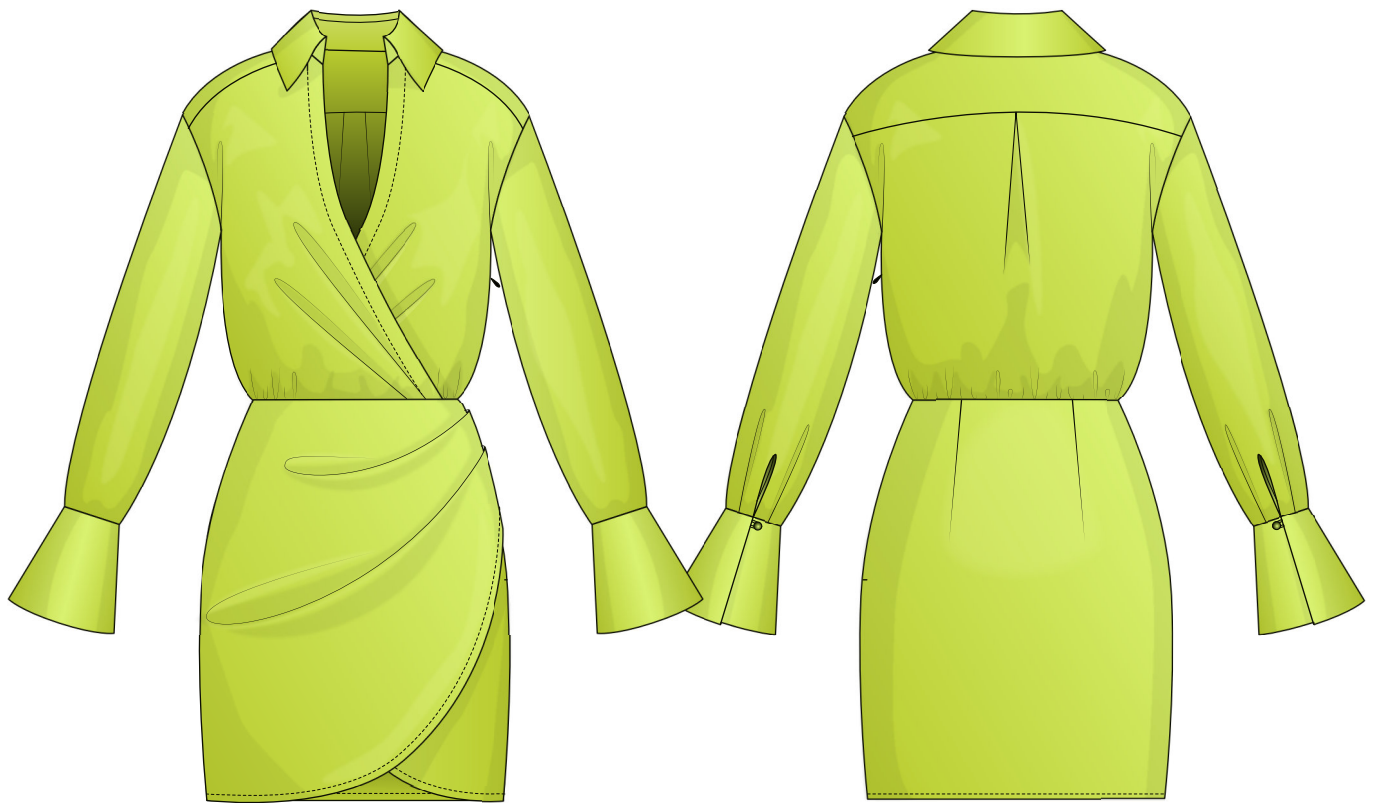


Back in 2016, when I was working on my first set of sewing instructions, I was trying to write them in such a way that even a complete beginner could easily understand and use them to create their very first garment. These instructions laid the foundation for the Vikisews brand, its vision and its mission. I wanted to create modern patterns with the most detailed and clear instructions.

Now, with each new collection we are constantly improving our instructions, amending them and adding more relevant details. By the time the final product reaches you, our drafters, correctors, and editors would have spent weeks perfecting every word and every photograph. If you compile a few of our instructions together, you will get a sewing manual that will assist you in sewing all kinds of garments at any difficulty level.

And I would be very happy if these instructions helped you to turn your hobby into a lifelong passion... Enjoy the process! Create your ultimate dream wardrobe! Wear your garments proudly for years to come!

If you have any questions, please contact us at [info@vikisews.com](mailto:info@vikisews.com) - we are always there to help.



## SYLVIE PATTERN DESCRIPTION

---

Sylvie is a semi-fitted dress with a fitted waist. The dress features a waistline seam, faux wrap front and waist pleats. There is a double layer yoke at the back with the shoulder seam shifted toward the front. The bodice is gathered at the front and back waist. The front skirt consists of two overlapping parts and features pleats in the left-hand side seam. The dress has a foldover collar with a collar stand, a deep V-neckline, and a slightly extended shoulder line. The set-in sleeves are long and semi-fitted. The bottom of the sleeve features pleats and a bias-bound slit. The sleeves are finished with cuffs with a button and loop closure. The dress closes with an invisible zipper in the left-hand side seam. The dress is above-knee length.



## IMPORTANT!

---

The contents of this pattern are copyright protected and belong exclusively to VikiSews. You may use VikiSews patterns for personal use. It is prohibited to share VikiSews patterns and instructions with third parties, as well as to publish patterns and instructions online for public access. According to part 1 of clause 1252 and clause 1301 of the Civil Code of the Russian Federation, failure to comply with the mentioned rules constitutes a breach of the legislation in force in the field of copyright and entails liability of the violator. Illegal use or distribution will be prosecuted in accordance with legislation.

You may use VikiSews patterns for commercial use, to sew custom-made garments and/or create fashion collections, on the condition that the patterns are solely used in a manufacturing setting and are not further shared with individuals.

# TOTAL EASE ALLOWANCE

|        | Bust ease    | Waistline ease | Hipline ease | Upper arm ease |
|--------|--------------|----------------|--------------|----------------|
| cm     | 24.7-25.7    | 2.5            | 6            | 4.5-6          |
| inches | 9 3/4-10 1/8 | 1              | 2 3/8        | 1 3/4-2 3/8    |

# GARMENT LENGTH, SLEEVE LENGTH

| Height, cm  | Garment length from waist down, cm | Sleeve length including shoulder width and cuff, cm |
|-------------|------------------------------------|---|
| 1 (154-160) | 46.5                               | 68.6-71   |
| 2 (162-168) | 49.5                               | 70.6-73   |
| 3 (170-176) | 52.5                               | 72.5-74.9   |
| 4 (178-184) | 55.5                               | 74.5-76.9   |

| Height, ft       | Garment length from waist down, in | Sleeve length including shoulder width and cuff, in |
|------------------|------------------------------------|---|
| 1 (5'1" - 5'3")  | 18 1/4                             | 27-28   |
| 2 (5'4" - 5'6")  | 19 1/2                             | 27 3/4-28 3/4                                       |
| 3 (5'4" - 5'6")  | 20 5/8                             | 28 1/2-29 1/2                                       |
| 4 (5'10" - 6'1") | 21 7/8                             | 29 3/8-30 1/4                                       |

# SUGGESTED FABRIC

To sew this dress, choose dress-weight fabrics with the following properties:

- medium-weight, pliable, breathable, soft, non-stretch or low-stretch, opaque
- the fiber content can include natural fibers (silk, cotton), artificial fibers (viscose), blends (silk + cotton, silk + viscose, etc.), and synthetics (polyester, polyester + elastane)
- the following fabrics are recommended: crepe, silk, artificial silk, satin, silk velvet.

**Attention!** We do not recommend stretchy knit materials (jersey fabrics) or lightweight sheer fabrics (chiffon, organza, stretch lace).

The dress in the photos is made from satin. The fabric is medium-weight, soft, low-stretch. The fiber content is polyester + elastane.

2. Interfacing, 140cm (55") wide, for all heights:

| Size   | 34–40 | 42–52 |
|--------|-------|-------|
| Meters | 0.4   | 0.5   |
| Yards  | 3/8   | 1/2   |

**IMPORTANT!** When purchasing fabric, please account for shrinkage and buy 5% more than required.

3. One invisible zipper, 35cm (14") long for all sizes and heights

4. Stitch-reinforced fusible bias tape - 0,8m (7/8 yd)

5. Straight grain fusible tape, 1cm (3/8") wide - 2m (2 1/8 yd)

6. Two buttons, 0,7–1cm (1/4–3/8") in diameter

7. Matching thread - 5 spools (1 spool for the sewing machine + 4 spools for the overlocker)

## TOOLS AND EQUIPMENT

- sewing machine for construction
- overlocker for finishing seam allowances. It can be replaced with a stretch overlock stitch or a zigzag stitch on the sewing machine (overlock or zigzag stitch width 2-3mm, stitch length 2.5mm)
- edgestitch foot for the sewing machine (optional)
- invisible zipper foot for the sewing machine.

## PATTERN PIECES LIST

### 1. From main fabric:

- front bodice - cut 2
- right front skirt - cut 1
- left front skirt - cut 1
- back bodice - cut 1 on fold
- back skirt - cut 1 on fold
- back yoke - cut 2
- sleeve - cut 2
- collar - cut 2
- collar stand - cut 2
- cuff - cut 4
- placket - cut 2
- rouleau loops - cut 1 (makes 2 loops)
- sleeve placket binding - cut 2

**IMPORTANT!** Don't forget to transfer all the notches from the pattern to your fabric.

### 2. From interfacing:

- collar - cut 2
- collar stand - cut 2
- cuff - cut 4
- placket - cut 2

## SEAM ALLOWANCES

Pattern pieces include 1cm (3/8") seam allowances.

Take this into account when laying out pattern pieces on the fabric.



**Fully interface the following pieces:**

- cuff - 4 pieces
- collar - 2 pieces
- collar stand - 2 pieces
- placket - 2 pieces

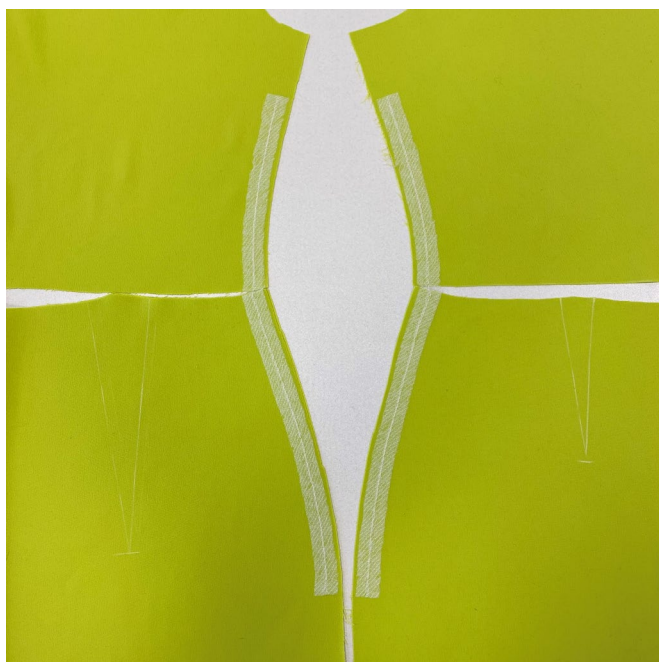
**Interface with straight grain fusible tape:**

- one of the collar stand pieces: along the seam allowances on the long sides
- placket: along the front neckline seam allowances

**Interface with fusible bias tape:**

- zipper seam allowances in the left-hand side seam on the front bodice, back bodice, left front skirt, and back skirt pieces.

We recommend testing your interfacing on a scrap of fabric before applying it to the pattern pieces. Check the iron's settings including temperature and steam settings (check if it's safe to use steam on your main fabric). Check how long it takes for the interfacing to bond.



To apply interfacing, position its gluey side onto the wrong side of the fabric piece (or part of it) and press. Try not to stretch the pieces with the iron. Firmly press the piece section by section, holding it down with the iron for a few seconds until that section is adhered and then pressing down the next section. You can use a cotton pressing cloth to protect your iron sole. Once the interfacing is fused, leave the piece on a hard flat surface for 15 minutes for it to cool down.

## FITTING

### First fitting

We recommend doing a first fitting for any garment.

**Why?** The first fitting is done to check the balance of the garment, adjust its volume (if you didn't make a toile and didn't make any changes to the pattern pieces before cutting) but only to make the garment smaller, adjust the length of the garment and sleeves, the depth of the neckline.