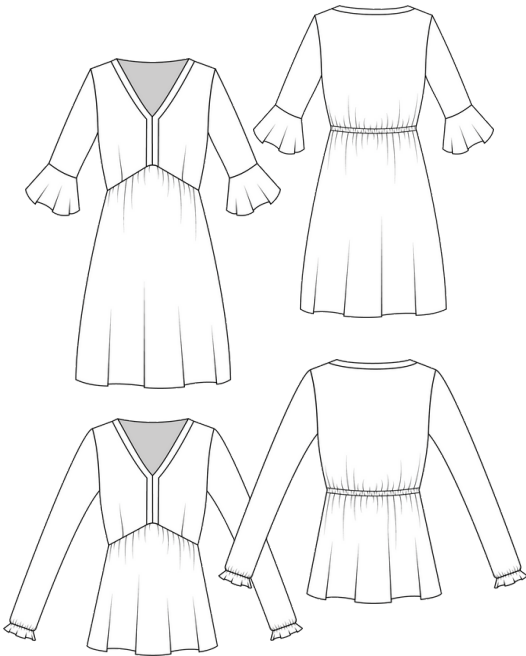


VALENTINA

# CONTENTS



**03** Introduction

**05** Size and fabric

**06** Printing

**08** Cutting

**11** Fit & Adjustments

**14** INSTRUCTIONS

**26** READY!

Copyright 2022 by Anja Siewert.

All images and texts published in these instructions are protected by copyright and may only be used commercially with the express permission of Anja Siewert. Copying and passing on the instructions and the pattern is not permitted. Commercial use of the instructions and the pattern is prohibited. The explanations and texts in this manual have been compiled and checked to the best of our knowledge. However, no guarantee for success can be given. No liability can be accepted for any errors in the instructions and the pattern.

## SIZE SELECTION

Please measure yourself before cutting and select your suitable size using the size chart. If your size falls between two sizes, you can use the layer function to print both sizes first. The pattern is designed for a body height of 168cm. For tips on lengthening and shortening, see page 12.

| SIZE                              | BUST          | WAIST         | HIP           |
|-----------------------------------|---------------|---------------|---------------|
| <b>1</b> (EU 32 / US 0 / UK 4)    | 81cm (32in)   | 64cm (25in)   | 90cm (35in)   |
| <b>2</b> (EU 34 / US 2 / UK 6)    | 85cm (33.5in) | 68cm (27in)   | 94cm (37in)   |
| <b>3</b> (EU 36 / US 4 / UK 8)    | 89cm (35in)   | 72cm (28in)   | 98cm (38.5in) |
| <b>4</b> (EU 38 / US 4 / UK 10)   | 94cm (37in)   | 76cm (30in)   | 102cm (40in)  |
| <b>5</b> (EU 40 / US 6 / UK 12)   | 98cm (38.5in) | 80cm (31.5in) | 106cm (42in)  |
| <b>6</b> (EU 42 / US 8 / UK 14)   | 103cm (40in)  | 88cm (34.5in) | 110cm (43in)  |
| <b>7</b> (EU 44 / US 10 / UK 16)  | 108cm (42in)  | 94cm (37in)   | 115cm (45in)  |
| <b>8</b> (EU 46 / US 12 / UK 18)  | 112cm (44in)  | 100cm (39in)  | 120cm (47in)  |
| <b>9</b> (EU 48 / US 14 / UK 20)  | 117cm (46in)  | 106cm (42in)  | 125cm (49in)  |
| <b>10</b> (EU 50 / US 16 / UK 22) | 122cm (48in)  | 112cm (44in)  | 130cm (51in)  |

## FABRIC SELECTION

**VALENTINA** is designed for woven fabrics. Fabrics with a light drape such as viscose, light linen or a light cotton are best suited.

## AMOUNT OF FABRIC

The indicated quantities are based on a fabric width of **1.40m (1.5yd / 55in)**.

Please note that you may need more fabric for certain patterns. On the other hand, with a fabric width of 1.50m, you may need less fabric.

| Size          | 1     | 2     | 3     | 4     | 5     | 6     | 7     | 8     | 9     | 10    |
|---------------|-------|-------|-------|-------|-------|-------|-------|-------|-------|-------|
| <b>blouse</b> | 1,7m  | 1,7m  | 1,7m  | 1,7m  | 2,2m  | 2,2m  | 2,2m  | 2,7m  | 2,7m  | 2,8m  |
|               | 1.8yd | 1.8yd | 1.8yd | 1.8yd | 2.4yd | 2.4yd | 2.4yd | 2.9yd | 2.9yd | 3yd   |
|               | 67in  | 67in  | 67in  | 67in  | 87in  | 87in  | 87in  | 106in | 106in | 110in |
| <b>dress</b>  | 2m    | 2m    | 2m    | 2,2m  | 2,5m  | 2,5m  | 2,5m  | 2,8m  | 3m    | 3,2m  |
|               | 2.1yd | 2.1yd | 2.1yd | 2.4yd | 2.7yd | 2.7yd | 2.7yd | 3yd   | 3.2yd | 3.5yd |
|               | 79in  | 79in  | 79in  | 87in  | 98in  | 98in  | 98in  | 110in | 118in | 126in |

## Additional material

In addition to your fabric, you will also need

- interfacing for your facing
- a matching elastic thread (for light fabrics white, for dark fabrics black)
- sewing thread in matching colors

Have you transferred all the notches and markers?  
Then let's get started!

1

### Sewing darts

Take the front pieces. We will start by sewing the bust darts. At this point, you should have already transferred the dart point to the wrong side of your fabric.

2

### Sewing darts

Place the front piece right sides together along the dart. The open edges of the dart should meet. Pin the dart together. The pinheads should point in the direction of the dart point.

3

### Sewing darts

Sew the dart with a 1cm (0.39") seam allowance. Start at the bottom edge of the front piece. Make the dart taper gently towards the tip and do not back-tack the seam at the dart tip. Leave the threads a little longer and knot them there by hand.

4

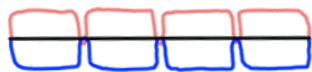
### Sewing the facing

Take two of the front-facing pieces and one of the back-facing pieces. Place them right sides together at the shoulder seams. Make sure the notches meet. The seam allowance of the facing pieces will overlap on one side. Sew the shoulder seams and then press the seam allowances apart. Repeat with the other facing pieces.

By smocking with an elastic thread, we can easily ruffle our back piece. Here I will briefly explain what you should consider before the first stitches with the elastic thread. Elastic thread comes in black, white, and sometimes red and blue. Since the elastic thread will only be visible on the wrong side of our fabric, you should choose a black elastic thread for dark fabrics and a white one for light fabrics. Before you start, please always take a look at the instructions for the sewing machine. The instructions often describe how to use elastic thread.

### Difference between smocking seam and normal topstitch seam

In a normal **topstitch seam**, the top and bobbin threads are intertwined in the center of the fabric. This means that only one thread is visible on each side. For example, if you sew a seam with a red top thread and a blue bobbin thread on the fabric with the right side of the fabric facing up, you will see only the red top thread on the right side and only the blue bobbin thread on the wrong side of the fabric. However, you will not be able to see the interlacing of the two threads at first glance.



normal topstitch seam



smocking seam

In a **smocking seam** with elastic thread, the elastic thread lies smoothly on the back of the fabric (our wrong side of the fabric). I.e. only the elastic thread (blue - see illustration) is looped by the upper thread. On the wrong side of the fabric, you can see how the top thread wraps around the elastic thread that is lying smoothly. The upper thread is thus also visible on the left side of the fabric. On the right side of the fabric, only our normal sewing thread, the top thread, and not the elastic thread, is visible.

This is how the seam should look on the wrong side of the fabric. The black elastic thread lies smooth and is looped by the yellow top thread.

