

FROM THE FOUNDER OF THE #VIKISEWS BRAND

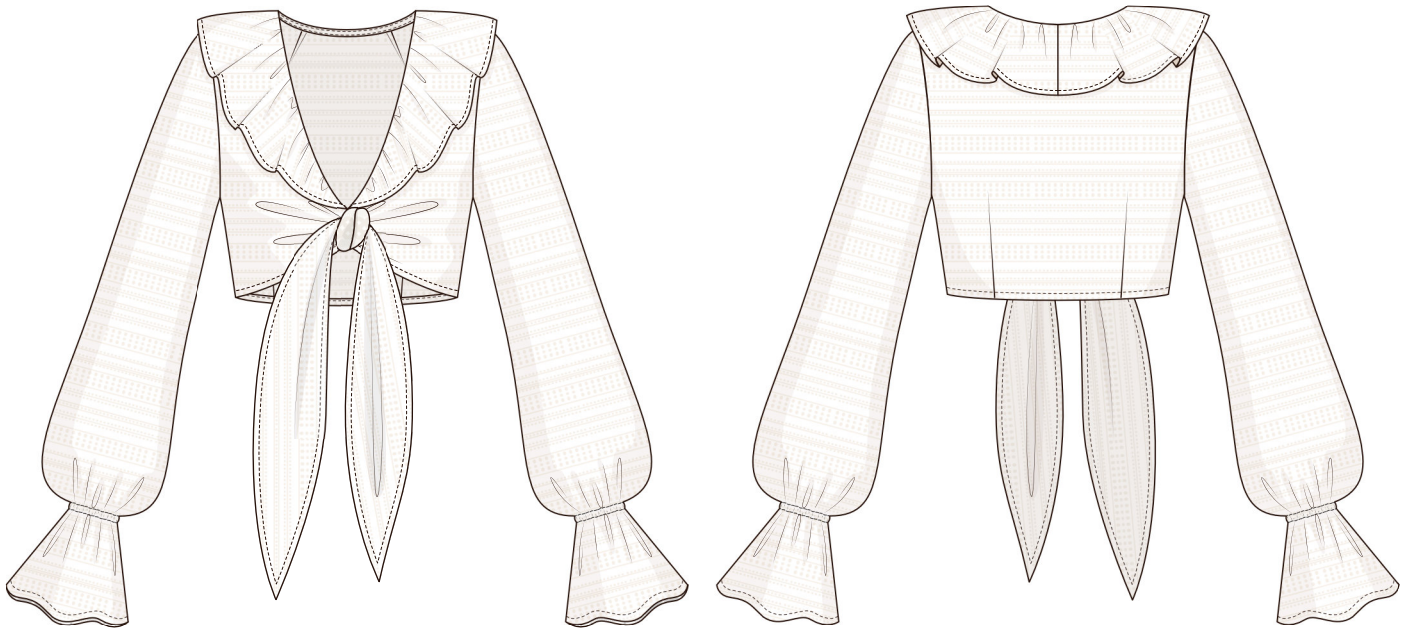


Back in 2016, when I was working on my first set of sewing instructions, I was trying to write them in such a way that even a complete beginner could easily understand and use them to create their very first garment. These instructions laid the foundation for the Vikisews brand, its vision and its mission. I wanted to create modern patterns with the utmost detailed and clear instructions.

Now, with each new collection we are constantly improving our instructions, amending them and adding more relevant details. By the time the final product reaches you, our drafters, correctors, and editors would have spent weeks perfecting every word and every photograph. If you compile a few of our instructions together, you will get a sewing manual that will assist you in sewing all kinds of garments at any difficulty level.

And I would be very happy if these instructions helped you to turn your hobby into a lifelong passion... Enjoy the process! Create your ultimate dream wardrobe! Wear your garments proudly for years to come!

If you have any questions, please contact us at info@vikisews.com — we are always there to help.



RAQUEL PATTERN DESCRIPTION

Raquel is a close-fitting blouse with an accentuated waist. The back features shoulder darts transferred to the neckline. The front has long, grown-on ties. The deep V-cut neckline features an attached flounce and is finished with bias binding. The set-in sleeves are long, flared toward the bottom. The sleeves feature elasticated casings at the wrists. The blouse is above-waist length.



IMPORTANT!

The contents of this pattern are copyright protected and belong exclusively to Vikisews. You may use Vikisews patterns for personal use. It is prohibited to share Vikisews patterns and instructions with third parties, as well as to publish patterns and instructions online for public access. According to part 1 of clause 1252 and clause 1301 of the Civil Code of the Russian Federation, failure to comply with the mentioned rules constitutes a breach of the legislation in force in the field of copyright and entails liability of the violator. Illegal use or distribution will be prosecuted in accordance with legislation.

You may use Vikisews patterns for commercial use, to sew custom-made garments and/or create fashion collections, on the condition that the patterns are solely used in a manufacturing setting and are not further shared with individuals.

TOTAL EASE ALLOWANCE

	Bust ease	Waistline ease	Hipline ease
cm	10	8.1–7.9	8.1–8.2
inches	3 7/8	3 1/4–3 1/8	3 1/4

GARMENT LENGTH, SLEEVE LENGTH

Height, cm	Back length, cm	Sleeve length, cm
1 (154–160)	33.8–36.8	65.4–67.4
2 (162–168)	34.7–37.7	67.5–69.5
3 (170–176)	35.7–38.7	69.5–71.5
4 (178–184)	36.7–39.7	71.5–73.5

Height, ft	Back length, in	Sleeve length, in
1 (5'1"–5'3")	13 1/4–14 1/2	25 3/4–26 1/2
2 (5'4"–5'6")	13 5/8–14 7/8	26 5/8–27 3/8
3 (5'7"–5'9")	14–15 1/4	27 3/8–28 1/8
4 (5'10"–6'1")	14 1/2–15 5/8	28 1/8–28 7/8

SUGGESTED FABRIC

To sew this garment, choose blouse- and dress-weight fabrics with the following properties:

- medium weight, pliable, soft, non-stretch or low-stretch
- the fiber content can include natural fibers (cotton, linen), artificial fibers (viscose), blends (linen + polyester, cotton + viscose, etc.), and synthetics (polyester)
- we recommend the following fabrics: textured cotton, cotton shirting, linen.

Attention! We do not recommend using stretchy knit materials. The fabric has to be structured.

The garment in the photo is made of cotton eyelet fabric. This fabric is medium weight, non-stretch, and structured. The fiber content is 100% cotton.

IMPORTANT! When purchasing fabric, please account for shrinkage and buy 5% more than required.

2. Elastic, 1 cm wide, in cm:

Height, cm	34	36	38	40	42	44	46	48	50	52
1 (154–160)	34.4	35	35.6	36.2	36.8	37.4	38	38.4	39	39.6
2 (162–168)	34.6	35.2	35.8	36.4	37	37.6	38.2	38.6	39.2	39.8
3 (170–176)	34.8	35.4	36	36.6	37.2	37.8	38.4	39	39.4	40
4 (178–184)	35.2	35.8	36.4	37	37.6	38.2	38.8	39.9	39.6	40.2

Elastic, 3/8" wide, in inches:

Height, ft	34	36	38	40	42	44	46	48	50	52
1 (5'1"–5'3")	13 1/2	13 3/4	14	14 1/4	14 1/2	14 3/4	15	15 1/8	15 3/8	15 5/8
2 (5'4"–5'6")	13 5/8	13 7/8	14 1/8	14 3/8	14 5/8	14 3/4	15	15 1/4	15 3/8	15 5/8
3 (5'7"–5'9")	13 3/4	13 7/8	14 1/8	14 3/8	14 5/8	14 7/8	15 1/8	15 3/8	15 1/2	15 3/4
4 (5'10"–6'1")	13 7/8	14 1/8	14 3/8	14 5/8	14 3/4	15	15 1/4	15 3/4	15 5/8	15 7/8

3. Matching thread — 5 spools (1 spool for the sewing machine + 4 spools for the overlocker)

TOOLS AND EQUIPMENT

- sewing machine for construction
- overlocker for finishing raw edges. This may be replaced with a stretch overlock stitch or a zigzag stitch on the sewing machine (overlock or zigzag stitch width 2–3 mm, stitch length 2.5 mm)
- stitch-in-the-ditch foot for the sewing machine (optional)



Press the darts flat.



Press the seam allowances of the darts towards the center back.



Place the front and back pieces right sides together.

Pin the shoulder seams, baste, and stitch on the sewing machine. Backstitch at the beginning and end.