

FROM THE FOUNDER OF THE #VIKISEWS BRAND



Back in 2016, when I was working on my first set of sewing instructions, I was trying to write them in such a way that even a complete beginner could easily understand and use them to create their very first garment. These instructions laid the foundation for the Vikisews brand, its vision and its mission. I wanted to create modern patterns with the utmost detailed and clear instructions.

Now, with each new collection we are constantly improving our instructions, amending them and adding more relevant details. By the time the final product reaches you, our drafters, correctors, and editors would have spent weeks perfecting every word and every photograph. If you compile a few of our instructions together, you will get a sewing manual that will assist you in sewing all kinds of garments at any difficulty level.

And I would be very happy if these instructions helped you to turn your hobby into a lifelong passion... Enjoy the process! Create your ultimate dream wardrobe! Wear your garments proudly for years to come!

If you have any questions, please contact us at info@vikisews.com — we are always there to help.



REESE PATTERN DESCRIPTION

Reese is a close-fitting dress with adjustable spaghetti straps. The front of the dress is fitted with bust darts transferred to the side seams, as well as with waist darts. The shaping at the back is achieved with waist darts. The dress has a center front placket fastening with buttons and rouleau loops. Reese is above-knee length.



IMPORTANT!

The contents of this pattern are copyright protected and belong exclusively to Vikisews. You may use Vikisews patterns for personal use. It is prohibited to share Vikisews patterns and instructions with third parties, as well as to publish patterns and instructions online for public access. According to part 1 of clause 1252 and clause 1301 of the Civil Code of the Russian Federation, failure to comply with the mentioned rules constitutes a breach of the legislation in force in the field of copyright and entails liability of the violator. Illegal use or distribution will be prosecuted in accordance with legislation.

You may use Vikisews patterns for commercial use, to sew custom-made garments and/or create fashion collections, on the condition that the patterns are solely used in a manufacturing setting and are not further shared with individuals.

TOTAL EASE ALLOWANCE

	Bust ease	Waistline ease	Hipline ease
cm	5.3–6.6	7.8–9.6	5.8–7.2
inches	2 1/8–2 5/8	3 1/8–3 3/4	2 1/4–2 7/8

GARMENT LENGTH

Height, cm	Back length, cm	Height, ft	Back length, in
1 (154–160)	58.1–59.7	1 (5'1"–5'3")	22 7/8–23 1/2
2 (162–168)	60.6–62.2	2 (5'4"–5'6")	23 7/8–24 1/2
3 (170–176)	63.1–64.9	3 (5'7"–5'9")	24 7/8–25 1/2
4 (178–184)	65.7–67.5	4 (5'10"–6'1")	25 7/8–26 5/8

SUGGESTED FABRIC

To sew this dress, choose dress-weight fabrics with the following properties:

- medium weight, pliable, soft, non-stretch or with very little stretch, opaque
- the fiber content can include natural fibers (silk), artificial fibers (viscose), blends (silk + polyester, silk + viscose, etc.), and synthetics (polyester, polyester + elastane)
- the following fabrics are recommended: satin, crepe, dress-weight viscose, silk.

Attention! We do not recommend very stretchy knit fabrics and lightweight sheer fabrics (chiffon, organza, stretch lace).

The dress in the photo is made of artificial silk. The fabric is medium weight, pliable, soft, and non-stretch. The fiber content is 100% polyester.

PATTERN PIECES LIST

1. From main fabric:

- back — cut 1 on fold
- front — cut 2
- placket — cut 1
- back facing — cut 1 on fold
- front facing — cut 2
- strap + ring tab — cut 2
- rouleau loop — cut 2.

2. From interfacing:

- placket — cut 1
- back facing — cut 1 on fold
- front facing — cut 2.

IMPORTANT! Don't forget to transfer all pattern markings and notches onto the fabric.

SEAM ALLOWANCES

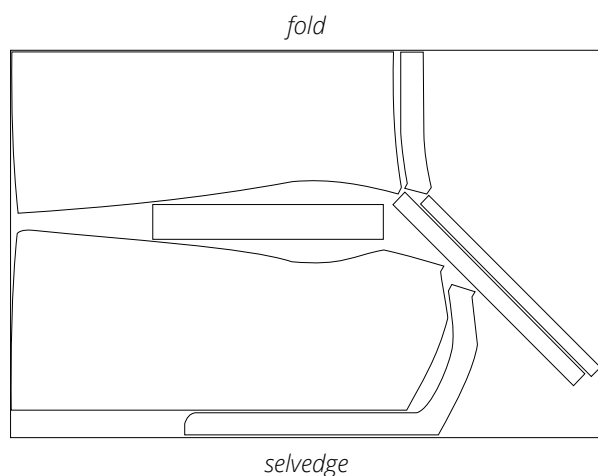
All pattern pieces include seam allowances as follows:

- garment hem allowance — 2 cm (3/4")
- all other edges — 1 cm (3/8").

Take this into account when laying out pattern pieces on the fabric.

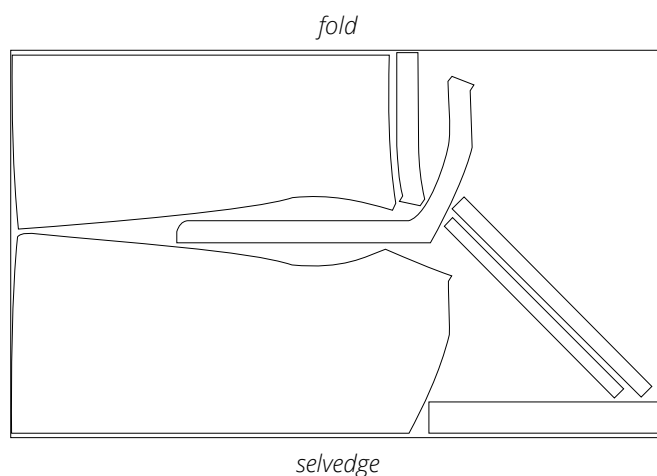
CUTTING LAYOUT

Main fabric with a directional print, 140–145 cm (55–57") wide, cut on fold, for sizes 34–42 in all heights



Important! Cut only one placket piece.

Main fabric with a directional print, 140–145 cm (55–57") wide, cut on fold, for sizes 44–48 in all heights



Important! Cut only one placket piece.

Important! If the needle leaves visible holes in the fabric (satin, silk, etc.), we recommend making a TOILE first in order to check the fit and evaluate possible issues. In this case, there is no need for a fitting, except to check the lengths. We recommend testing on a scrap of fabric first to see whether your material is prone to be marked by needles.

If one of the pieces ends up longer than the other after basting, do not rush to true them by cutting off the excess or stretching the shorter piece. First make sure that the notches are properly matched, lay the pieces on a flat surface and try to re-baste them together. If the pieces still don't match in length because they have stretched or there has been a cutting mistake, you can always true the pieces after the fitting, during the construction of the garment.

After assembling the garment, press it lightly and press the seam allowances either to one side or open.

What to look for during fitting?

The left and right sides of the garment should look the same.

Check the garment balance – the side seams and the center front line should all be vertical.

The edges of the center fastening should not overlap, nor spread apart.

The garment hem should be parallel to the floor.

Evaluate the fit of the front and back while looking at the person from the side. The front and back should not be riding up or sagging. There should be no horizontal folds at the back, no pulling at the shoulder blade area.

Evaluate the side seams from the front or back. The garment sides should not sag or ride up.

Check the size and placement of the darts. The tip of the bust dart should point toward the bust apex but not go over it.

Verify the garment length.

Check for fit issues associated with individual features of the body (for example, an asymmetrical figure with shoulders at different levels, etc.).

Verify the garment volume, there should be enough ease for a comfortable fit.

After the fitting, mark changes symmetrically to both sides of the garment; if needed, baste once more for another fitting.



Working on the wrong side, pin each of the darts on the front and back pieces.