

FROM THE FOUNDER OF THE #VIKISEWS BRAND

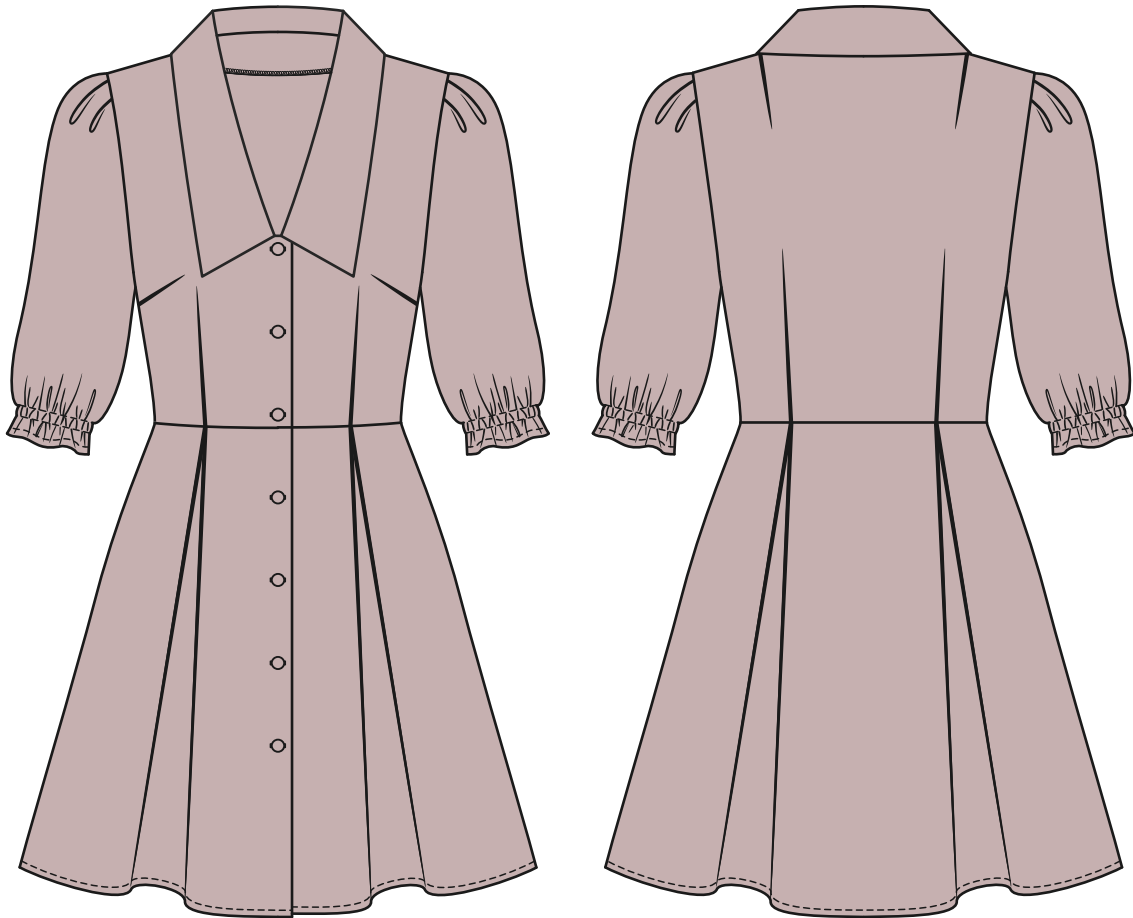


Back in 2016, when I was working on my first set of sewing instructions, I was trying to write them in such a way that even a complete beginner could easily understand and use them to create their very first garment. These instructions laid the foundation for the Vikisews brand, its vision and its mission. I wanted to create modern patterns with the utmost detailed and clear instructions.

Now, with each new collection we are constantly improving our instructions, amending them and adding more relevant details. By the time the final product reaches you, our drafters, correctors, and editors would have spent weeks perfecting every word and every photograph. If you compile a few of our instructions together, you will get a sewing manual that will assist you in sewing all kinds of garments at any difficulty level.

And I would be very happy if these instructions helped you to turn your hobby into a lifelong passion... Enjoy the process! Create your ultimate dream wardrobe! Wear your garments proudly for years to come!

If you have any questions, please contact us at info@vikisews.com - we are always there to help.



SHARON PATTERN DESCRIPTION

Sharon is a semi-fitted dress with a fitted waist. The dress has a waist seam, bust and waist darts on the front, as well as shoulder and waist darts on the back. The full skirt features box pleats at the waist. The dress has a deep V-neckline with a turn-down collar. The set-in sleeves are short, wide and pleated at the cap. There is a sewn-on casing at the bottom of the sleeves with elastic threaded through it. The dress closes with buttons and buttonholes at the front. Sharon is above knee length.



IMPORTANT!

The contents of this pattern are copyright protected and belong exclusively to VikiSews. You may use VikiSews patterns for personal use. It is prohibited to share VikiSews patterns and instructions with third parties, as well as to publish patterns and instructions online for public access. According to part 1 of clause 1252 and clause 1301 of the Civil Code of the Russian Federation, failure to comply with the mentioned rules constitutes a breach of the legislation in force in the field of copyright and entails liability of the violator. Illegal use or distribution will be prosecuted in accordance with legislation.

You may use VikiSews patterns for commercial use, to sew custom-made garments and/or create fashion collections, on the condition that the patterns are solely used in a manufacturing setting and are not further shared with individuals.

TOTAL EASE ALLOWANCE

	Bust ease	Waistline ease	Hipline ease	Upper arm ease
cm	6	3.5	46	19.3
inches	2 3/8	1 3/8	18 1/8	7 5/8

GARMENT LENGTH, SLEEVE LENGTH

Height, cm	Garment back length, sizes 34–46, cm	Garment back length, sizes 48–52, cm	Sleeve length, cm
1 (154-160)	84	88	34
2 (162-168)	87	91	36
3 (170-176)	90	94	38
4 (178-184)	93	97	40

Height, ft	Garment back length, sizes 34–46, in	Garment back length, sizes 48–52, in	Sleeve length, in
1 (5'1"–5'3")	33 1/8	34 5/8	13 3/8
2 (5'4"–5'6")	34 1/4	35 7/8	14 1/8
3 (5'7"–5'9")	35 3/8	37	15
4 (5'10"–6'1")	36 5/8	38 1/4	15 3/4

SUGGESTED FABRIC

To sew this dress, choose dress-weight and suiting fabrics with the following properties:

- lightweight or medium-weight, soft, non-stretch or low-stretch, opaque
- the fiber content can include natural fibers (wool, silk, cotton, linen), artificial fibers (viscose), blends (wool + silk, wool + polyester, cotton + viscose, etc.), and synthetics (polyester, polyester + elastane)
- the following fabrics are recommended: cotton, linen, crepe, silk, viscose, sateen, denim, twill, lightweight corduroy, wool, gabardine.

Attention! We do not recommend stretchy knit materials (jersey fabrics).

The dress in the photos is made of dress-weight 100% viscose. The fabric is medium-weight, soft, non-stretch. The collar is made of shirting, 95% cotton + 5% elastane.

4. Seven buttons, 0.9–1cm (3/8") in diameter
5. Elastic, 1.2cm (1/2") wide – 55–65cm (21 5/8–25 5/8") depending on the size
6. Matching thread – 5 spools (1 spool for the sewing machine + 4 spools for the overlocker).

TOOLS AND EQUIPMENT

- sewing machine for construction
- overlocker for finishing seam allowances. It can be replaced with a stretch overlock stitch or a zigzag stitch on the sewing machine (overlock or zigzag stitch width 2–3mm, stitch length 2.5mm)
- buttonhole foot for the sewing machine
- edgestitch foot for the sewing machine (optional)
- elastic threader / bodkin (can be replaced with a safety pin).

PATTERN PIECES LIST

1. From main fabric:

- front bodice – cut 2
- front skirt – cut 2
- back bodice – cut 1 on fold
- back skirt – cut 1 on fold
- sleeve – cut 2
- sleeve casing – cut 2
- front facing – cut 2
- back neck facing – cut 1 on fold

2. From additional material:

- upper collar – cut 1 on fold
- undercollar – cut 1 on fold

IMPORTANT! Don't forget to transfer all the notches from the pattern to your fabric.

3. From interfacing:

- front facing – cut 2
- back neck facing – cut 1 on fold
- upper collar – cut 1 on fold
- undercollar – cut 1 on fold

SEAM ALLOWANCES

Pattern pieces include the following seam allowances:

- garment hem – 2cm (3/4")
- all other edges – 1cm (3/8")

Take this into account when laying out pattern pieces on the fabric.



First fitting

We recommend doing a first baste fitting for any garment you are making.

What for? The first fitting is done to check the balance of the garment, adjust its volume (if you didn't make a toile and didn't make any changes to the pattern pieces before cutting) but only to make the garment smaller, adjust the length of the garment and sleeves, the depth of the neckline.

How? After applying the interfacing and stay tape, baste the darts and then construct the garment (including sleeves) along the main structural seams: shoulder seams, side seams, waist seam. Baste the upper collar in. Insert elastic into the sleeve casings. Baste the garment hem.

To achieve a good fit, you should correctly assemble the garment for the first fitting, so pay attention to the notches. Pin the pieces at the notches first and then between them, distributing the fabric evenly.

Assemble the garment using one of these two methods:

- use a long machine stitch (4–5mm stitch length)
- baste by hand (approximately 1cm [3/8"] stitch length). Make sure to baste on a flat surface like a table, don't leave the fabric unsupported.