

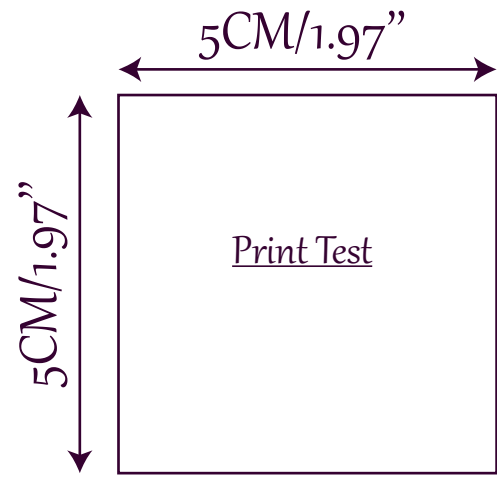
COLUMBUS

Unisex bag

The COLUMBUS bag measures 21cm/8.27" length, 22cm/8.66" height and 8cm/3.15" depth.

Pattern's elements:

N°	Element	To be cut
1	FLAP	1X in the fabric + 1X in the lining+ 2X in the fusing
2	FRONT	1X in the fabric + 1X in the fusing
3	BACK	1X in the fabric + 1X in the fusing
4	UPPER ZIP	2X in the fabric+ 2X in the lining + 4X in the fusing, all are cut in the folding
5	SIDE-UNDER BAG	1X in the fabric + 2X in the lining+ 2X in the fusing, all are cut in the folding
6	FRONT POCKET	1X in the fabric + 1X in the lining+ 2X in the fusing
7	FLAP POCKET BAG	1X in the lining + 1X in the fusing
8	BACK POCKET BAG	1X in the lining + 1X in the fusing
9	INSIDE POCKET BAG	1X in the lining + 1X in the fusing
10	INSIDE FRONT-BACK LINING	2X in the lining + 2X in the fusing
11	INSIDE POCKETS	2X in the fabric + 2X in the fusing



---->BE CAREFUL: Some elements must be cut in the folding of the fabric, lining or fusing. All informations are on the pattern. Well follow them.

ALL SEAMS VALUES ARE IN RED ON THE PATTERN AND ARE AT 1CM/0.39".

!! SOME ELEMENTS MUST BE ASSEMBLY TOGETHER ON THE PAPER BE FORE TO CUT THEM ON THE FABRIC.

WELL FOLLOW THE INFORMATIONS MENTIONNED.

!! elements on page 19 to 27 are not in scale.

It's a miniature pattern to give you the measures and the shape you must have when you print and assembly them.

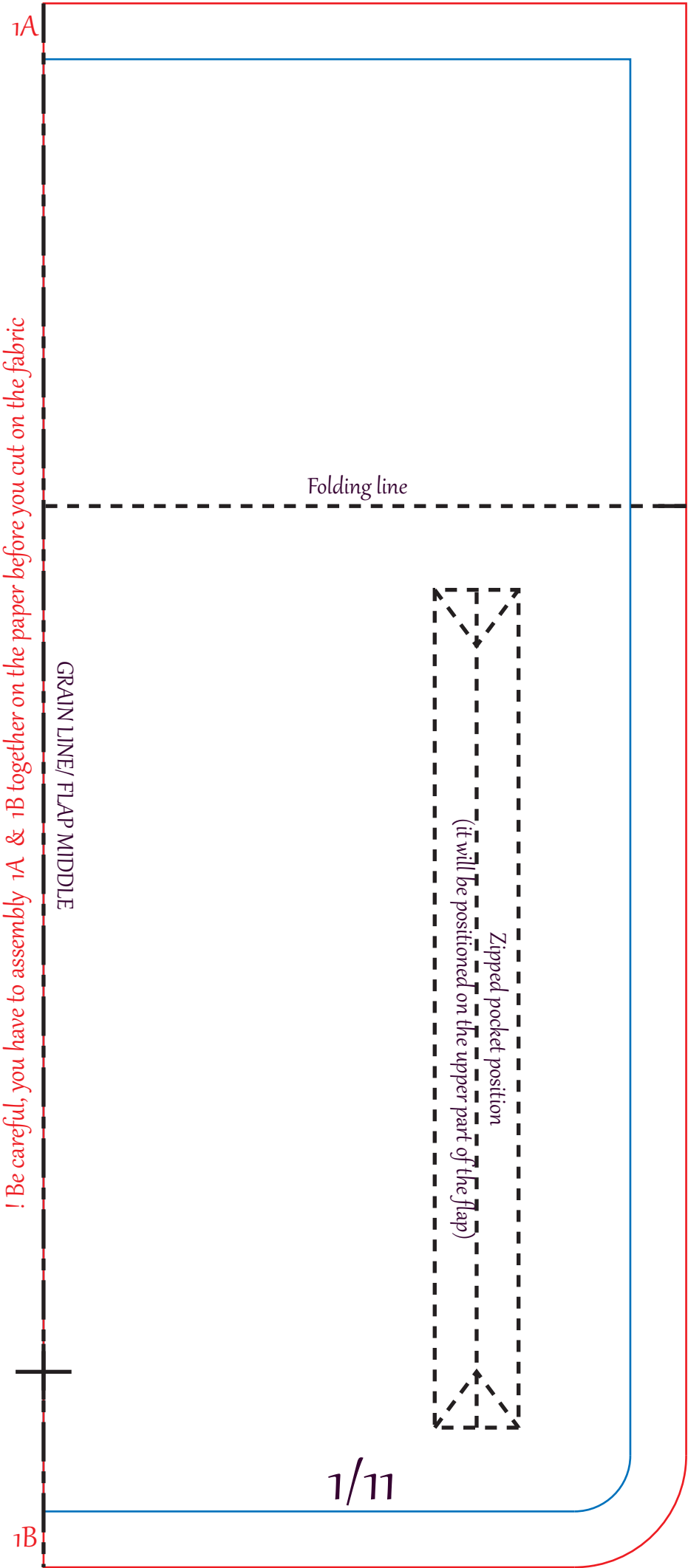


COLUMBUS

Unisex bag

THE FLAP

page 2/2



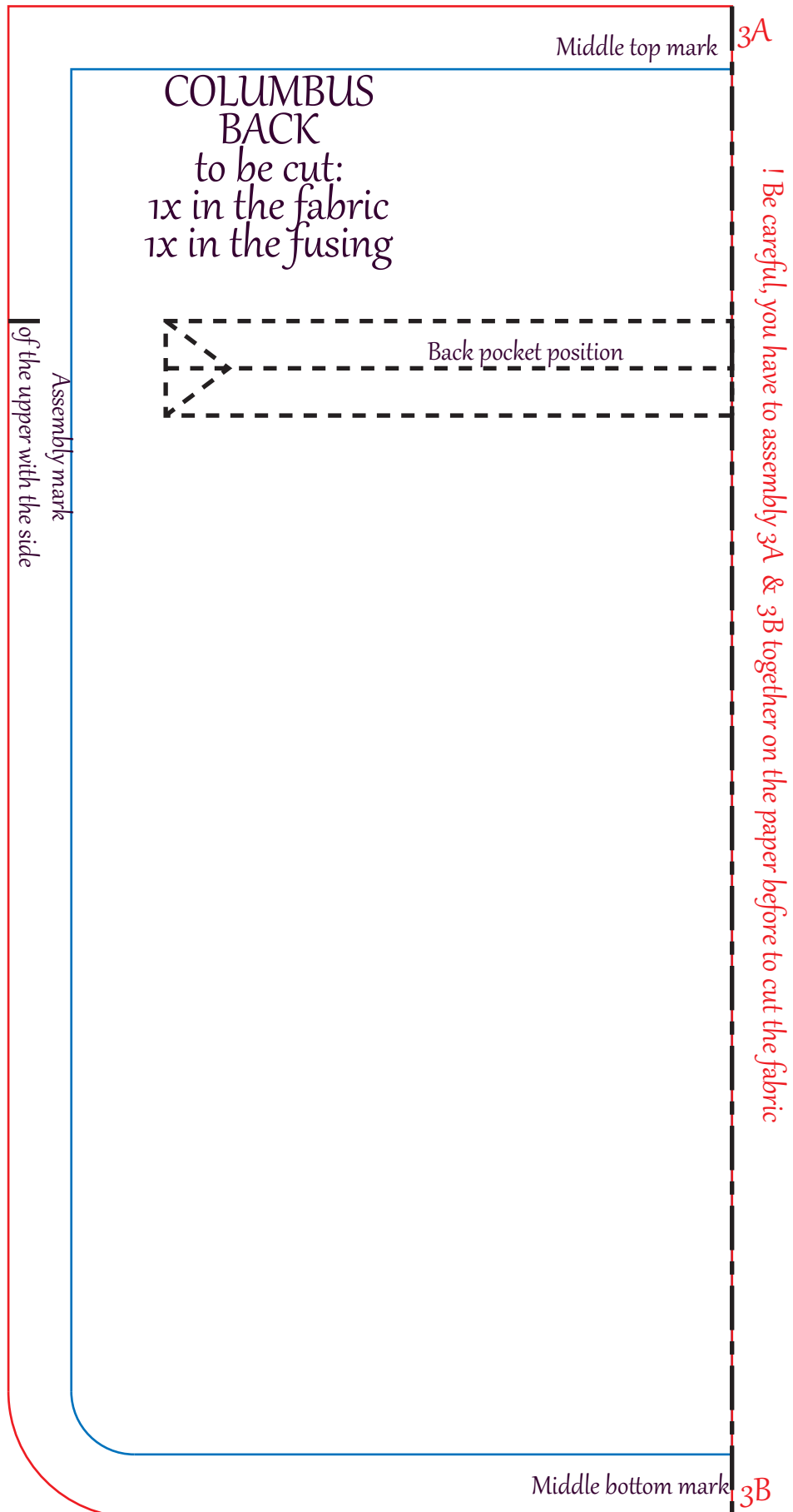
! Be careful, you have to assembly 1A & 1B together on the paper before you cut on the fabric

COLUMBUS

Unisex bag

THE BACK

page 1/2



COLUMBUS

Unisex bag

6/11

Middle top mark

COLUMBUS FRONT POCKET

To be cut:
1x in the fabric
1x in the lining
2x in the fusing

GRAIN LINE/ FRONT POCKET MIDDLE

Magnetic button position
(it will be positioned
on the fabric part of the front pocket)

Flap line position

Middle bottom mark