

# FROM THE FOUNDER OF THE #VIKISEWS BRAND

---



Back in 2016, when I was working on my first set of sewing instructions, I was trying to write them in such a way that even a complete beginner could easily understand and use them to create their very first garment. These instructions laid the foundation for the Vikisews brand, its vision and its mission. I wanted to create modern patterns with the most detailed and clear instructions.

Now, with each new collection we are constantly improving our instructions, amending them and adding more relevant details. By the time the final product reaches you, our drafters, correctors, and editors would have spent weeks perfecting every word and every photograph. If you compile a few of our instructions together, you will get a sewing manual that will assist you in sewing all kinds of garments at any difficulty level.

And I would be very happy if these instructions helped you to turn your hobby into a lifelong passion... Enjoy the process! Create your ultimate dream wardrobe! Wear your garments proudly for years to come!

If you have any questions, please contact us at [info@vikisews.com](mailto:info@vikisews.com) - we are always there to help.



## CLARISSA PATTERN DESCRIPTION

---

Clarissa is a flared dress of moderate fulness, the close fit of its bodice is achieved by applying multiple rows of shirring. The semi-raglan sleeves are generously gathered along the sleeve caps into an elastic casing. The sleeves are long and voluminous and are gathered at the bottom with the help of an elastic casing stitched 6cm from the sleeve hem. Length of the dress is mid-calf.



## IMPORTANT!

---

The contents of this pattern are copyright protected and belong exclusively to VikiSews. You may use VikiSews patterns for personal use. It is prohibited to share VikiSews patterns and instructions with third parties, as well as to publish patterns and instructions online for public access. According to part 1 of clause 1252 and clause 1301 of the Civil Code of the Russian Federation, failure to comply with the mentioned rules constitutes a breach of the legislation in force in the field of copyright and entails liability of the violator. Illegal use or distribution will be prosecuted in accordance with legislation.

You may use VikiSews patterns for commercial use, to sew custom-made garments and/or create fashion collections, on the condition that the patterns are solely used in a manufacturing setting and are not further shared with individuals.

## TOTAL EASE ALLOWANCE

---

Bust ease, cm	Waistline ease, cm	Hipline ease, cm	Upper arm ease, cm
0	66.8-87.7	45.1-66.5	36-44

## GARMENT LENGTH, SLEEVE LENGTH

---

Height, cm	Garment length at center back, cm	Sleeve length, cm
1 (154-160)	73	57.9-58.6
2 (162-168)	76	60-60.7
3 (170-176)	79	62-62.8
4 (178-184)	82	64-64.9

## SUGGESTED FABRIC

---

To make this dress, choose dress weight fabrics with the following properties:

- Medium weight, with good drape, breathable, soft, non-stretch or with very little stretch, opaque
- The fiber content can include natural fibers (silk, cotton, linen), artificial (viscose), blends (cotton + viscose, etc.) and synthetic (polyester, polyester + elastane)
- The following fabrics are recommended: cotton fabric with some body, linen, shirting denim, double gauze, crinkle cotton

**Attention!** We do not recommend stretchy knit materials and lightweight sheer fabrics (chiffon, organza, stretch lace) for this dress.

The dress on the photo is made with dress/suiting weight linen. This fabric is medium weight, non-stretch and holds shape well. The fiber content is 100% linen.

# TOOLS AND EQUIPMENT

---

- Sewing machine for construction
- Overlocker for finishing raw edges. This may be replaced with a stretch overlock stitch or a zigzag stitch on your sewing machine (overlock or zigzag stitch width 2-3mm, stitch length 2.5mm)
- Special sewing machine foot with ruler or stitch guide (optional)
- Bodkin or similar threading aid, or a safety pin for pulling elastic through a channel

## PATTERN PIECES LIST

---

### 1. From main fabric:

- Front – cut 1 on fold
- Back – cut 1 on fold
- Sleeve – cut 2
- Top sleeve channel – cut 2
- Bottom sleeve channel – cut 2

*IMPORTANT! Don't forget to transfer all pattern marks and notches to your fabric.*

## SEAM ALLOWANCES

---

The pattern pieces are drafted to include the following seam allowances:

- Top of front and back pieces – 1.5 cm
- All the other edges – 1cm

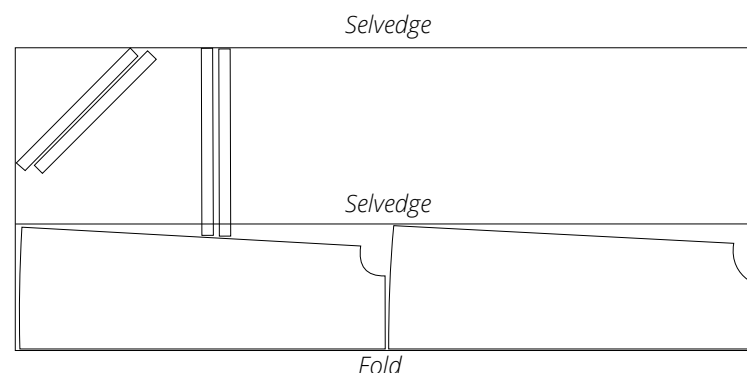
Take this into consideration when positioning your pattern pieces on the fabric.

## CUTTING LAYOUT

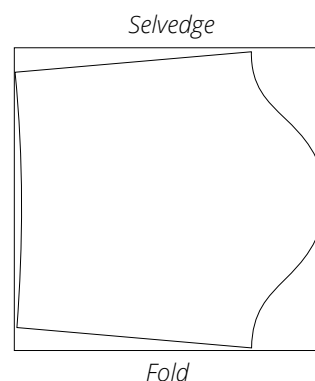
---

Main fabric, 130cm wide, for cutting in two stages, for size 34 in all heights, without directional print or nap

Stage 1, partially folded, fold created for front and back pieces only



Stage 2, folded



**Attention!** Top sleeve channel and bottom sleeve channel pieces are cut out in one layer out of the remaining fabric



Stitch over the marked lines, leaving a loose end of approximately 5-7cm on each side. If your gathering tension ends up being too tight, you will be glad to use the extra long ends to do the adjustments. If during your fitting you discover that your gathering is, indeed, too tight, you can let out the elastic threads by stretching the stitching lines slightly. If the gathering ends up being too loose, you can pull on the elastic threads to tighten it.



After you complete your shirring, the pieces will have shrunk approximately in half.

Press the gathers on the right side of the fabric.

Put front and back pieces right sides together, match the side seams and notches. Pin and run a basting machine stitch with 4-5mm length.

Prepare your garment for the first fitting by basting all pieces together. Baste sleeve seams together, baste the sleeves into the armhole, insert (or baste) the elastic in the top part of the sleeve cap.

### First garment fitting

We recommend doing a first fitting for every garment.

**For what purpose?** The goal of the first fitting is to check the balance of the garment and to correct the fit (if you didn't make a toile and didn't make any adjustments to the pattern prior to cutting the main fabric) only to make it smaller, adjustment of garment length and sleeve length, fine-tuning the neckline depth and shape.

**How?** Assemble all the pattern pieces (including sleeves) along the main seams, thread elastic through the gathering channels.

To ensure a well-fitting garment, it's important to properly assemble it for the first fitting, so pay attention to the notches during construction. When you pin pieces together, pin at the notches first, then at the ends and between the notches, making sure the fabric is laying smoothly.

### To baste the garment:

- use either a long straight machine stitch (stitch length 4-5mm) or
- baste by hand (stitch length approximately 1cm). For hand basting, it's important to have the pieces lay on a smooth flat surface (table) without any parts hanging off the surface.