

FROM THE FOUNDER OF THE #VIKISEWS BRAND

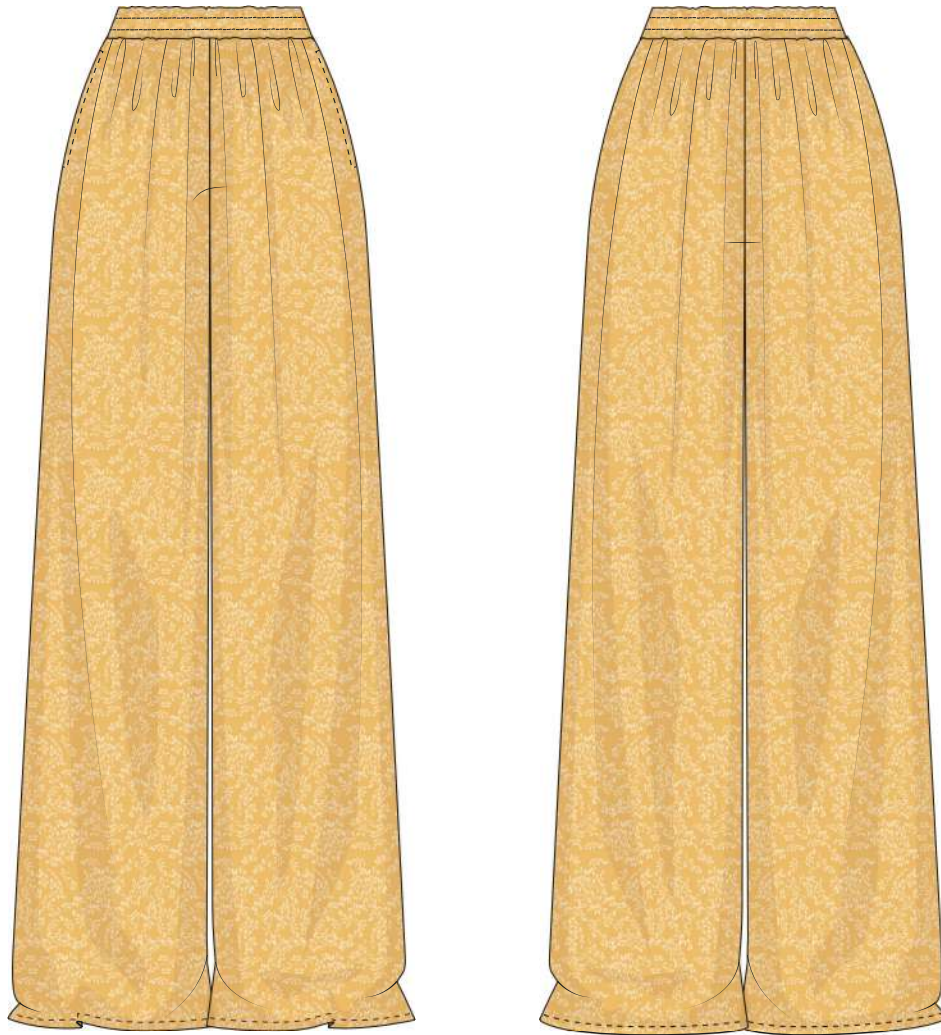


Back in 2016, when I was working on my first set of sewing instructions, I was trying to write them in such a way that even a complete beginner could easily understand and use them to create their very first garment. These instructions laid the foundation for the Vikisews brand, its vision and its mission. I wanted to create modern patterns with the most detailed and clear instructions.

Now, with each new collection we are constantly improving our instructions, amending them and adding more relevant details. By the time the final product reaches you, our drafters, correctors, and editors would have spent weeks perfecting every word and every photograph. If you compile a few of our instructions together, you will get a sewing manual that will assist you in sewing all kinds of garments at any difficulty level.

And I would be very happy if these instructions helped you to turn your hobby into a lifelong passion... Enjoy the process! Create your ultimate dream wardrobe! Wear your garments proudly for years to come!

If you have any questions, please contact us at info@vikisews.com - we are always there to help.



MARA PATTERN DESCRIPTION

Mara is a pair of voluminous pants with a straight silhouette. The side seams feature functional pockets. The wide waistband is elasticated. The elastic is secured inside the waistband by two rows of stitches. The upper edge of the waistband sits on the natural waist. The pants are below ankle length.



IMPORTANT!

The contents of this pattern are copyright protected and belong exclusively to VikiSews. You may use VikiSews patterns for personal use. It is prohibited to share VikiSews patterns and instructions with third parties, as well as to publish patterns and instructions online for public access. You may use VikiSews patterns for commercial use, to sew custom-made garments and/or create garment collections, on the condition that the patterns are solely used in a manufacturing setting and are not further shared with individuals.

TOTAL EASE ALLOWANCE

Waistline ease, cm	Hipline ease, cm
36.5-37	15.8-15.9

GARMENT LENGTH AND WIDTH

Height, cm	Side seam length including waistband, cm	Circumference of the pant at the hemline, cm
1 (154-160)	105.4-106.9	66-84
2 (162-168)	109.7-111.2	66-84
3 (170-176)	114-115,5	66-84
4 (178-184)	118.3-119.8	66-84

SUGGESTED FABRIC

To sew these pants, choose dress-weight fabrics with the following properties:

- light- to mid-weight, with good drape, breathable, fluid, light, soft, non-stretch or with little stretch, opaque
- the fabric content can include natural (silk, cotton, linen), artificial (viscose), blends (linen + silk, linen + cotton, cotton + viscose, etc.), and synthetic fibers (polyester)
- the following fabrics are recommended: dress-weight viscose, challis, natural silk, man-made silk, polyester.

Attention! We do not recommend very stretchy knit materials (jersey fabric) and lightweight sheer fabrics (chiffon, organza, stretch lace).

The pants on the photo are made in dress-weight fabric. This fabric is light, soft, non-stretch and has good drape. The fiber content is 100% polyester.

PATTERN PIECES LIST

1. From main fabric:

- front leg – cut 2
- back leg – cut 2
- pocket bag – cut 4
- waistband – cut 1

IMPORTANT! Don't forget to transfer all pattern markings and notches onto the fabric.

Additionally, cut 2 fusible interfacing strips, 1.5 cm wide, to interface the seam allowances of the pocket opening. The grainline of the interfacing should be parallel to the longer side of the strips (along the selvedge of the interfacing). As an alternative, use straight fusible tape.

SEAM ALLOWANCES

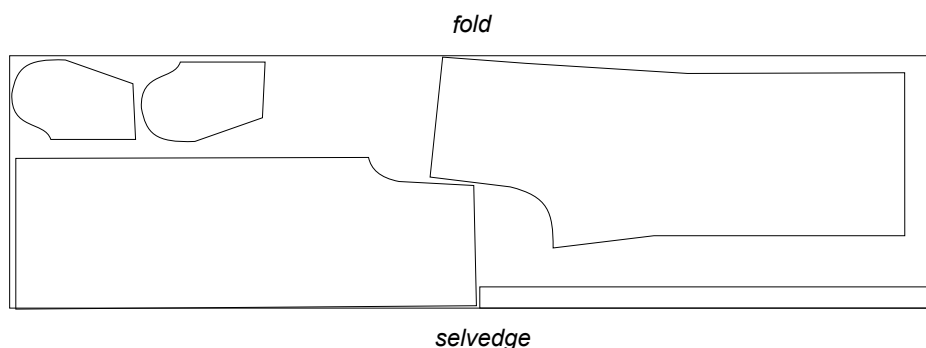
All pattern pieces include seam allowances as follows:

- garment hem allowance – 4cm
- all other seams – 1cm

Take this into account when laying out pattern pieces on the fabric.

CUTTING LAYOUT

Main fabric, 130cm wide, folded, for sizes 34-40 in all heights;
sizes 42-46 in height 3-4, with a non-directional print



Important! The waistband piece is cut from leftovers, on a single layer of fabric.



Partially interface:

- Front leg pocket opening seam allowances, using either strips of interfacing or ready-made 1cm wide straight fusible tape.

If using fusible interfacing, the grainline should be parallel to the longer side of the strips. The strips should be 1 cm wide.

Interfacing must be equal to the length of the section to be interfaced, plus an additional 1.5 cm on each side. The fusible tape should be placed 0.7-0.8 cm from the seam allowance edge.

To interface, put the gluey side of the interfacing (the side that feels rough to the touch) on top of the wrong side of the fabric piece (or a section thereof) and press with the iron.

Do not iron the piece, but instead press it section by section, holding it down with the iron a few seconds until that section is adhered and then pressing down the next section. You may use a cotton pressing cloth to protect your iron sole. Once the interfacing process is complete, leave the piece on a hard, flat surface for 15 minutes for it to cool down.



Partially press and steam the back leg pieces:

- slightly stretch the crotch extension (the part which has a curved shape) toward the inseam. Make sure to stretch both back leg pieces equally.
- stretch the inseam to the side by 0.5cm from the knee level and up to the crotch point.