

FROM THE FOUNDER OF THE #VIKISEWS BRAND

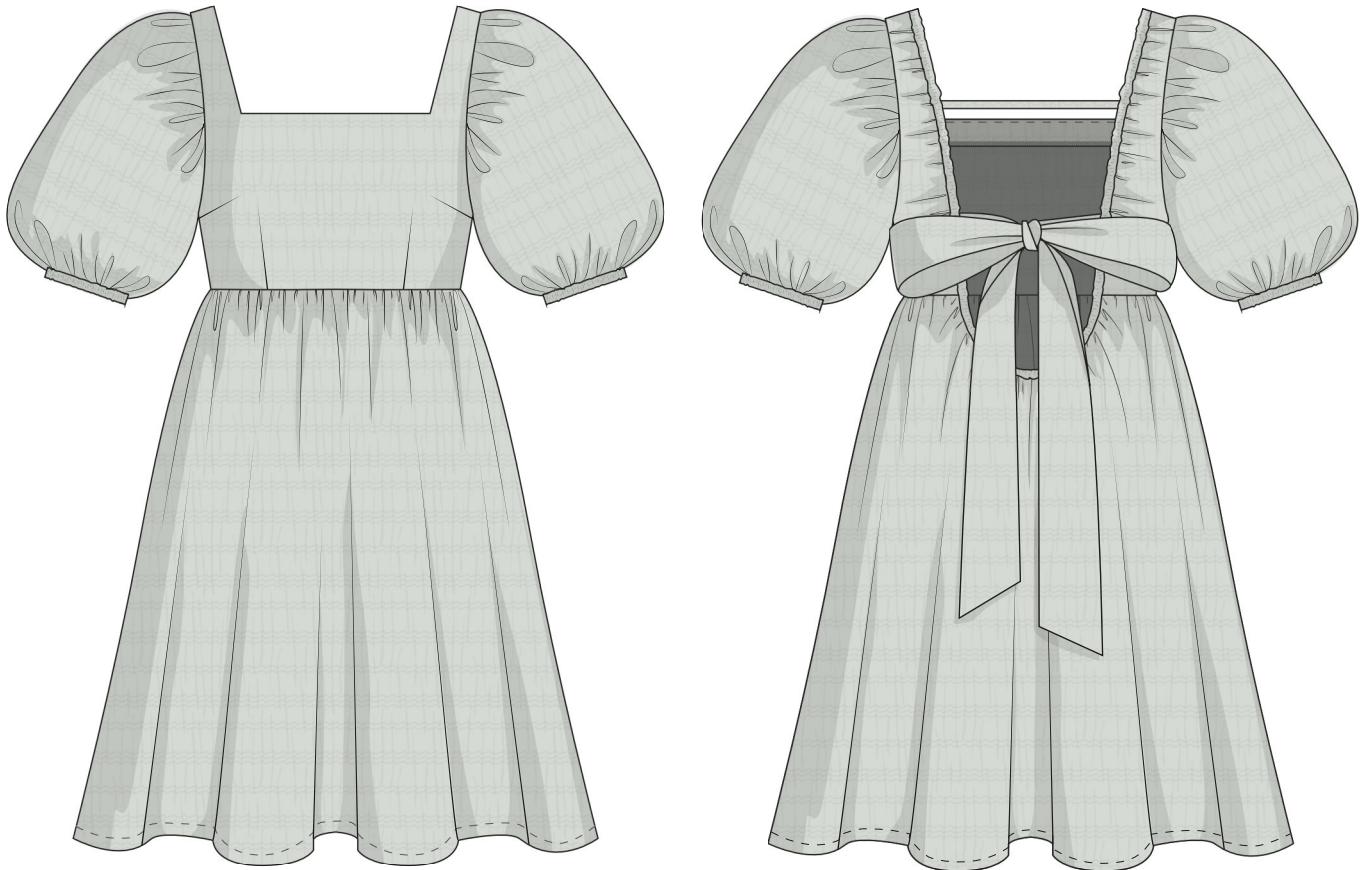


Back in 2016, when I was working on my first set of sewing instructions, I was trying to write them in such a way that even a complete beginner could easily understand and use them to create their very first garment. These instructions laid the foundation for the Vikisews brand, its vision and its mission. I wanted to create modern patterns with the most detailed and clear instructions.

Now, with each new collection we are constantly improving our instructions, amending them and adding more relevant details. By the time the final product reaches you, our drafters, correctors, and editors would have spent weeks perfecting every word and every photograph. If you compile a few of our instructions together, you will get a sewing manual that will assist you in sewing all kinds of garments at any difficulty level.

And I would be very happy if these instructions helped you to turn your hobby into a lifelong passion... Enjoy the process! Create your ultimate dream wardrobe! Wear your garments proudly for years to come!

If you have any questions, please contact us at info@vikisews.com - we are always there to help.



UNI PATTERN DESCRIPTION

Uni features a semi fitted bodice, an empire waist and a voluminous skirt with gathers. The shaping of the bodice is achieved with bust and waist darts. The front bodice has a wide, square neck, while the back bodice has a U-shaped neckline ending at the waistline. The neckline edge on the back bodice is gathered using elastic threaded through applied channels. The back strap sewn into the channels at the shoulder blades level secures the back bodice in place. The back bodice features wide ties that form a bow with long tails at the bust level. The shoulder seams have been shortened. The voluminous sleeves are set-in and feature tight gathers around the cap. The hem of the sleeve is elasticated. The sleeve is above-elbow length. The skirt is straight, wide and features tight gathers at the waistline. Uni is above-knee length.



IMPORTANT!

The contents of this pattern are copyright protected and belong exclusively to VikiSews. You may use VikiSews patterns for personal use. It is prohibited to share VikiSews patterns and instructions with third parties, as well as to publish patterns and instructions online for public access. You may use VikiSews patterns for commercial use, to sew custom-made garments and/or create garment collections, on the condition that the patterns are solely used in a manufacturing setting and are not further shared with individuals.

TOTAL EASE ALLOWANCE

Bust ease, cm	Waistline ease, cm	Hipline ease, cm	Upper arm ease, cm
1.3-3.6	107.8-158.6	89.9-141.5	64.6-87.8

GARMENT LENGTH, SLEEVE LENGTH

Height, cm	Garment length from waist down, cm	Sleeve length, cm
1 (154-160)	43.4	37.7
2 (162-168)	45.5	39.3
3 (170-176)	48.1	40.6-41.1
4 (178-184)	50.7	42.2-42.7

SUGGESTED FABRIC

To sew this dress, choose dress-weight fabrics with the following properties:

- medium weight, with good drape, breathable, soft, non-stretch or with little stretch, opaque;
- the fabric content can include natural (silk, cotton, linen), artificial (viscose), blends (silk + polyester, cotton + viscose, etc.), and synthetic fibers (polyester, polyester + elastane)
- the following fabrics are recommended: cotton with good drape, crinkle fabric, shirting fabric, denim, manmade silk with good-drape.

Attention! We do not recommend very stretchy knit materials (viscose jersey fabric) and lightweight sheer fabrics (chiffon, organza, stretch lace).

The dress on the photo is made in crinkled fabric. This fabric is medium weight, soft, has good drape and very little stretch. The fiber content is a blend of cotton (88%), polyamide (11%), and elastane (1%).

4. Elastic, 1 cm wide, in centimetres:

Size	Height			
	1 (154-160)	2 (162-168)	3 (170-176)	4 (178-184)
34	140.2	138.8	140.6	142.7
36	135.8	143.3	145.2	147.3
38	140.1	148.2	150.1	151.2
40	144.7	153.9	157.8	159.8
42	159.7	158.7	160.3	162.3
44	165.3	164.5	165.9	168.1
46	170.9	169.9	171.7	173.7
48	176.7	175.9	177.9	179.5
50	182.3	181.5	185.1	185.3
52	188.1	187.3	189.5	190.9

***IMPORTANT!** When purchasing fabric, please account for shrinkage and buy 5% more than required.*

5. Lightweight fusible knit interfacing, 140cm wide for all sizes and heights – 0.2m.

6. Matching thread, 5 spools (1 spool for the sewing machine and 4 spools for the serger)

TOOLS AND EQUIPMENT

- sewing machine for construction;
- serger for finishing raw edges. This may be replaced with a stretch overlock stitch or a zigzag stitch on the sewing machine (overlock or zigzag stitch width 2-3mm, stitch length 2.5mm);
- bodkin for threading elastic through a channel (may be replaced with a safety pin).

Important! Check if the chosen fabric is prone to be left with visible holes from the needle (such as silk, batiste, etc.). In such case, make sure to check the fit or detect any potential fit issues by sewing a TOILE first. Test fitting the garment from the main fabric is either not done at all, or has the purpose to solely adjust the length (of the skirt, of the sleeve, etc.).

If after basting, one piece ends up being bigger than the other one, do not rush to true them (making them identical by trimming the excess). Firstly, make sure all notches match. Secondly, lay your pieces on a flat surface and try once again to baste them. If you still end up with pieces not equal in size, for example, after one has been stretched out, or there was a mistake made while cutting out, the pieces should be trued after performing the test fit, while constructing the actual garment.

After assembling the garment, gently press it. Press flat or press open the seams.

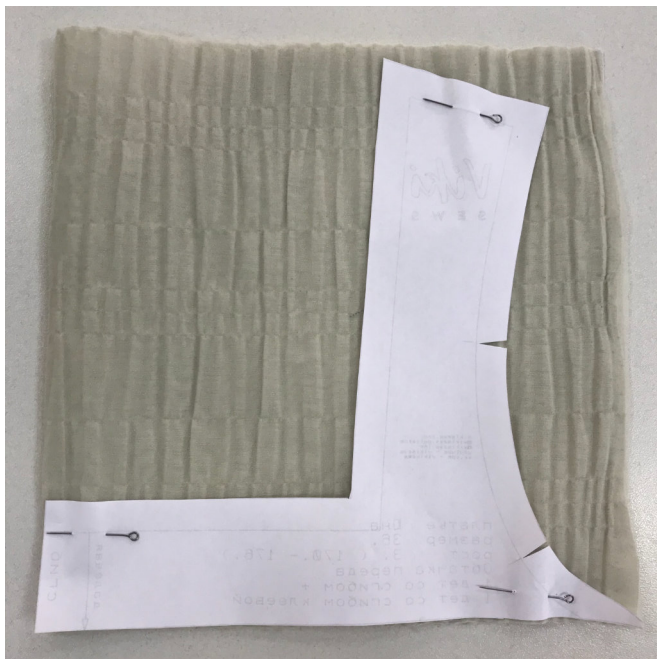
What should be considered when testing the fit?

Analyze the balance of the garment – side seams should be vertical. Analyze the shoulder seam, it should lay on the natural shoulder line.

The back should not sag or ride up. There should be no horizontal folds on the back, nor stress folds in the shoulder blades area, at the shoulders, around the neckline neither at the front, nor at the back.

Pay attention if the garment has fit issues due to individual body features.

After the test fit, alter the pattern pieces, and if necessary, baste again the garment for a new test fit.



Fully interface the front neck facing

For crinkle fabrics, it is recommended to firstly interface a piece of fabric suitable in size for the pattern piece. Secondly, cut out the pattern piece.

When interfacing or pressing crinkle fabrics, the iron should not be pressed firmly against the fabric. Instead - gently press the fabric using the steam setting.

To interface, put the gluey side of the interfacing (the side that feels rough to the touch) on top of the wrong side of the fabric piece (or a section thereof) and press with the iron. Do not iron the piece, but instead press it section by section, holding it down with the iron a few seconds until that section is adhered and then pressing down the next section. You may use a cotton pressing cloth to protect your iron sole. Once the interfacing process is complete, leave the piece on a hard, flat surface for 15 minutes for it to cool down.