

Viki

S E W S

DRESS

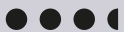
CAITLIN



SIZES

34-52

DIFFICULTY



INTERMEDIATE



PROMO CODE
all_patterns20

20% off
your next purchase on
vikisews.com

FROM THE FOUNDER OF THE #VIKISEWS BRAND



Back in 2016, when I was working on my first set of sewing instructions, I was trying to write them in such a way that even a complete beginner could easily understand and use them to create their very first garment. These instructions laid the foundation for the Vikisews brand, its vision and its mission. I wanted to create modern patterns with the utmost detailed and clear instructions.

Now, with each new collection we are constantly improving our instructions, amending them and adding more relevant details. By the time the final product reaches you, our drafters, correctors, and editors would have spent weeks perfecting every word and every photograph. If you compile a few of our instructions together, you will get a sewing manual that will assist you in sewing all kinds of garments at any difficulty level.

And I would be very happy if these instructions helped you to turn your hobby into a lifelong passion... Enjoy the process! Create your ultimate dream wardrobe! Wear your garments proudly for years to come!

If you have any questions, please contact us at info@vikisews.com — we are always there to help.



CAITLIN PATTERN DESCRIPTION

Caitlin is a close-fitting dress with an accentuated waist. It features a waist seam that sits above the natural waistline, a deep V-neckline with a flounce and flounce sleeves. The skirt is cut on the bias and has a gentle A-line shape. The front bodice is fitted with bust darts transferred to the side seams and waist darts. The back bodice is fitted with shoulder and waist darts. The front skirt features a yoke. Caitlin has flounces at the waist and at the yoke bottom. It fastens with an invisible zipper in the center back seam. The dress is finished with a free-hanging lining and is midi length.



IMPORTANT!

The contents of this pattern are copyright protected and belong exclusively to Vikisews. You may use Vikisews patterns for personal use. It is prohibited to share Vikisews patterns and instructions with third parties, as well as to publish patterns and instructions online for public access. According to part 1 of clause 1252 and clause 1301 of the Civil Code of the Russian Federation, failure to comply with the mentioned rules constitutes a breach of the legislation in force in the field of copyright and entails liability of the violator. Illegal use or distribution will be prosecuted in accordance with legislation.

You may use Vikisews patterns for commercial use, to sew custom-made garments and/or create fashion collections, on the condition that the patterns are solely used in a manufacturing setting and are not further shared with individuals.

TOTAL EASE ALLOWANCE

	Bust ease	Waistline ease	Hipline ease
cm	5.9–9.4	12.5–15.3	18.6–21.9
inches	2 3/8–3 3/4	4 7/8–6	7 3/8–8 5/8

GARMENT LENGTH

Height, cm	Garment length from waist down, cm	Height, ft	Garment length from waist down, in
1 (154–160)	82	1 (5'1"–5'3")	32 1/4
2 (162–168)	85	2 (5'4"–5'6")	33 1/2
3 (170–176)	88	3 (5'7"–5'9")	34 5/8
4 (178–184)	91	4 (5'10"–6'1")	35 7/8

SUGGESTED FABRIC

To sew this dress, choose dress-weight fabrics with the following properties:

- lightweight, fluid, soft, non-stretch or with very little stretch
- the fiber content can include natural fibers (silk, cotton), artificial fibers (viscose), blends (silk + polyester, cotton + viscose, etc.), and synthetics (polyester, polyester + elastane)
- the following fabrics are recommended: atlas, dress-weight viscose, natural silk, artificial silk, chiffon, crepe de chine, batiste

Attention! We do not recommend stretchy knit fabrics and structured fabrics (satin, organza).

For the lining, we recommend artificial fibers (viscose), blends (viscose + elastane, viscose + polyester), and synthetics (polyester, polyester + elastane).

The dress in the photo is made of chiffon. The fabric is lightweight, soft, with good drape and very little stretch. The fiber content is 100% natural silk.

The lining is polyester + elastane.

IMPORTANT! Don't forget to transfer all pattern markings and notches onto the fabric.

Glue the front skirt lining pattern pieces together along the marked line before cutting the lining fabric.

Cut strips of interfacing that are 1.5 cm (5/8") wide and equal in length to the following:

- armscye seam allowances on the front and back bodice pieces
- neckline seam allowances on the front and back bodice pieces
- center seam allowance along the zipper section on the back bodice piece
- shoulder seam allowance on the front bodice piece
- center seam allowance along the zipper section on the back skirt lining piece (after the outer shell and lining are assembled, see below).

The interfacing strips should be cut on the straight grain (parallel to the selvedge).

SEAM ALLOWANCES

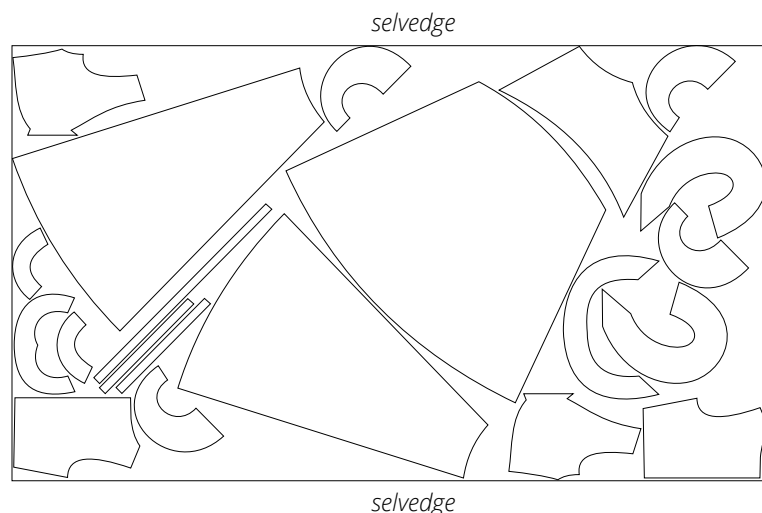
All pattern pieces include seam allowances as follows:

- center seam allowances on the back bodice piece — 1.5 cm (5/8")
- center seam allowances on the back skirt piece — 1.5 cm (5/8")
- all other edges — 1 cm (3/8")

Take this into account when laying out pattern pieces on the fabric.

CUTTING LAYOUT

Main fabric, 140 cm (55") wide, with a directional print/nap, cut on a single layer,
for sizes 34–38 in all heights





Transfer the main construction lines to the garment pieces with hand stitches:

- waist and shoulder darts on the back bodice piece
- waist and bust darts on the front bodice piece

Use light-colored thread in order to avoid marking the fabric during pressing and steaming.

Partially interface the following pieces:

- armscye seam allowances on the front and back bodice pieces
- neckline seam allowances on the front and back bodice pieces
- center seam allowance along the zipper section on the back bodice piece
- shoulder seam allowance on the front bodice piece

We recommend testing your interfacing and fusible stay tape on a scrap of fabric before applying it to the main pieces. Check your iron's temperature and steam settings (check if it's safe to use steam on your main fabric). Check how long it takes for the interfacing to bond.

To interface, put the gluey side of the interfacing onto the wrong side of the fabric piece (or a section thereof) and press with the iron. Do not iron the piece, but instead press it section by section, holding it down with the iron a few seconds until that section is adhered and then pressing down the next section. You may use a cotton pressing cloth to protect your iron sole. Once the interfacing is fused, leave the piece on a hard flat surface for 15 minutes for it to cool down.

FITTING

We recommend doing a fitting for any garment.

Why? The fitting is done to check the balance of the garment, adjust the ease (only to reduce it and given that you haven't sewn a toile and haven't made any pattern modifications prior to cutting the fabric), adjust the garment length.

How? After applying the fusible stay tape, we recommend basting the darts and the main construction seams (center back, shoulder and side seams). Baste the garment hem, the neckline flounce, and the armscye flounces.

To ensure a well-fitting garment, it's important to properly assemble it for the fitting, so pay attention to the notches. First pin the pieces at the notches and then between them, making sure the fabric is laying smoothly.

Hand-baste the garment (approximately 1 cm [3/8"] stitch length). Ensure the pieces are laying on a straight flat surface (table) without any parts hanging off the surface.