

# FROM THE FOUNDER OF THE #VIKISEWS BRAND

---

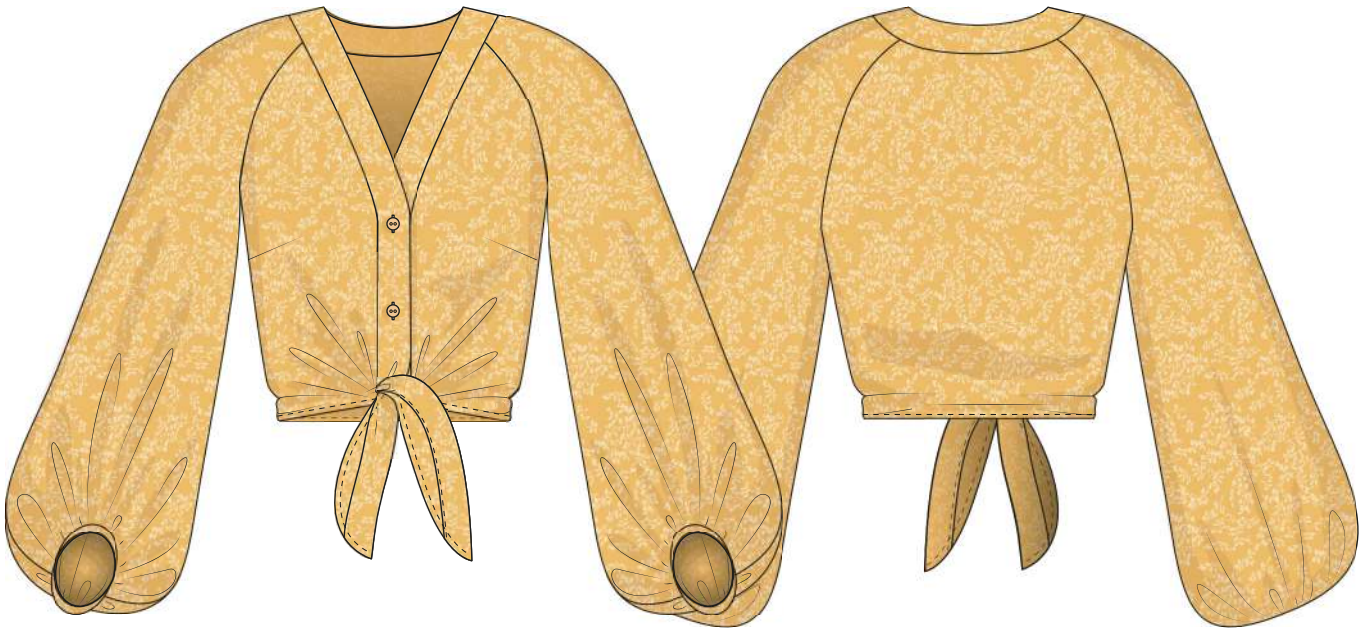


Back in 2016, when I was working on my first set of sewing instructions, I was trying to write them in such a way that even a complete beginner could easily understand and use them to create their very first garment. These instructions laid the foundation for the Vikisews brand, its vision and its mission. I wanted to create modern patterns with the most detailed and clear instructions.

Now, with each new collection we are constantly improving our instructions, amending them and adding more relevant details. By the time the final product reaches you, our drafters, correctors, and editors would have spent weeks perfecting every word and every photograph. If you compile a few of our instructions together, you will get a sewing manual that will assist you in sewing all kinds of garments at any difficulty level.

And I would be very happy if these instructions helped you to turn your hobby into a lifelong passion... Enjoy the process! Create your ultimate dream wardrobe! Wear your garments proudly for years to come!

If you have any questions, please contact us at [info@vikisews.com](mailto:info@vikisews.com) - we are always there to help.



## LUCY PATTERN DESCRIPTION

---

Lucy is a fitted at the waist moderate volume blouse. The front bust darts are integrated into the side seams, the front ties are part of the front panels. It has a deep V-neck and a front button placket. The raglan sleeve flares out into a wide gathered bishop shape at the bottom. The bottom of the sleeve is asymmetrical, slightly shorter at the front, and is finished with a continuous narrow cuff. The bottom of the blouse sits at the natural waist.



## IMPORTANT!

---

The contents of this pattern are copyright protected and belong exclusively to VikiSews. You may use VikiSews patterns for personal use. It is prohibited to share VikiSews patterns and instructions with third parties, as well as to publish patterns and instructions online for public access. According to part 1 of clause 1252 and clause 1301 of the Civil Code of the Russian Federation, failure to comply with the mentioned rules constitutes a breach of the legislation in force in the field of copyright and entails liability of the violator. Illegal use or distribution will be prosecuted in accordance with legislation.

You may use VikiSews patterns for commercial use, to sew custom-made garments and/or create fashion collections, on the condition that the patterns are solely used in a manufacturing setting and are not further shared with individuals.

# TOTAL EASE ALLOWANCE

---

	Bust ease	Waistline ease	Upper arm ease
cm	11.6–11.8	15.5–15.9	7.5
inches	4 5/8	6 1/8–6 1/4	3

# GARMENT LENGTH, SLEEVE LENGTH

---

Height, cm	Garment length at center back, cm	Sleeve length, including shoulder width, cm
1 (154-160)	38.9-40.7	63-65
2 (162-168)	39.9-41.7	65.1-67
3 (170-176)	40.9-42.7	66.8-68.9
4 (178-184)	41.9-43.7	68.7-70.8

Height, ft	Garment length at center back, in	Sleeve length, including shoulder width, in
1 (5'1"–5'3")	15 3/8–16	24 3/4–25 5/8
2 (5'4"–5'6")	15 3/4–16 3/8	25 5/8–26 3/8
3 (5'7"–5'9")	16 1/8–16 3/4	26 1/4–27 1/8
4 (5'10"–6'1")	16 1/2–17 1/4	27–27 7/8

# SUGGESTED FABRIC

---

To sew this blouse, choose dress weight fabrics with the following properties:

- medium- and lightweight, soft, pliable or not pliable, non-stretch
- the fiber content can include natural fibers (silk, cotton, linen), man-made fibers (acetate, viscose), blends (cotton + viscose, etc.), and synthetic fibers (polyester)
- the following fabrics are recommended: satin, natural and artificial silk, poplin, linen, broderie anglaise, shirting cotton, viscose, batiste.

The blouse in the photo has been made with a medium-weight, non-stretch, soft, pliable, 100% polyester fabric.

# TOOLS AND EQUIPMENT

---

- sewing machine for construction
- overlocker for finishing raw edges. This may be replaced with a stretch overlock stitch or a zigzag stitch on your sewing machine (overlock or zigzag stitch width 2-3mm, stitch length 2.5mm)
- edgestitch foot for the sewing machine (optional)
- buttonhole foot for the sewing machine

# PATTERN PIECES LIST

---

## 1. From the main fabric:

- front – cut 2
- back – cut 1 on fold
- front sleeve – cut 2
- back sleeve – cut 2
- front placket – cut 4
- back placket – cut 2 on fold
- sleeve hem binding – cut 2

## 2. From Interfacing:

- front placket – cut 4
- back placket – cut 2 on fold

**IMPORTANT!** Don't forget to transfer all the notches from the pattern to your fabric.

# SEAM ALLOWANCES

---

Pattern pieces include the following seam allowances:

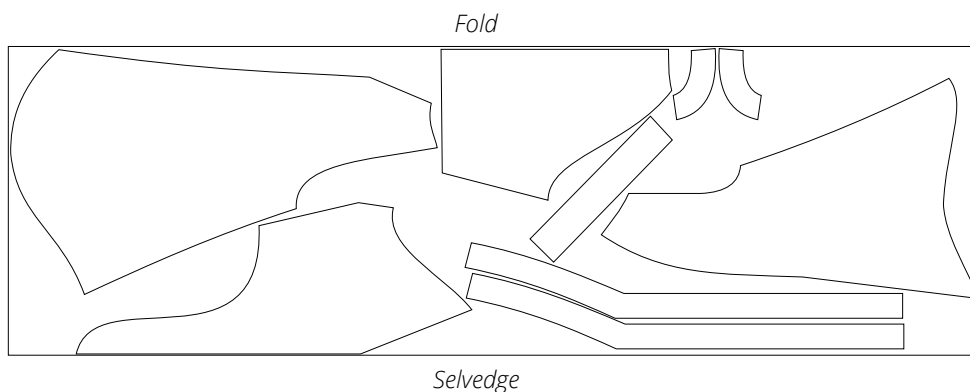
- all edges - 1cm (3/8")

Take this into account when laying out pattern pieces on the fabric.

# CUTTING LAYOUT

---

Main fabric, 110cm (43") wide on fold, for sizes 34 – 40 in all heights,  
for a non-directional print



**Use one of the following two construction methods:**

- use a long machine stitch (4-5mm stitch length)
- baste by hand (approximately 1cm (3/8") stitch length). Make sure to baste on a flat surface, like a table, don't leave the fabric unsupported.

**Important!** If the needle leaves visible holes in the fabric (leather, suede, rainwear fabric, silk, etc.), we recommend making a TOILE to check for fitting issues. In this case, there is no need for a fitting, except to check the length. We recommend testing your material before you start sewing.

If after basting one of the pieces ends up longer than the other, don't rush to trim the longer piece or stretch the shorter one. First make sure that the notches match, lay out the pieces on a flat surface and try basting again. If the pieces still don't match because they've stretched or there has been a cutting mistake, you can always trim the pieces after the fitting during the construction of the garment.

After assembling the garment, press it lightly and press the seam allowances either to one side or open.

### **What to look for during fitting?**

Check the garment balance - side seams should be aligned vertically.

Check the side view of the front and back of the garment (look at yourself sideways in the mirror). The front and back should not sag or ride up.

Check the side seams while looking at the garment from the front or back - the sides of the garment should not be sagging or riding up.

Check the length of the garment.

Check for issues that might be caused by the unique features of the person's body (for example, an asymmetric figure such as uneven shoulders, etc.)

Check the garment fit, there should be enough ease and it should feel comfortable.

After the fitting, mark corrections symmetrically on both sides of the garment; if needed, baste once more and do another fitting.



Pin, baste and stitch the darts on the wrong side of the front pieces. Backstitch at the beginning of the seam only; at the end hand-tie the loose threads, thread them through a large-eyed needle, pull through and hide the threads inside the body of the dart.