

FROM THE FOUNDER OF THE #VIKISEWS BRAND



Back in 2016, when I was working on my first set of sewing instructions, I was trying to write them in such a way that even a complete beginner could easily understand and use them to create their very first garment. These instructions laid the foundation for the Vikisews brand, its vision and its mission. I wanted to create modern patterns with the utmost detailed and clear instructions.

Now, with each new collection we are constantly improving our instructions, amending them and adding more relevant details. By the time the final product reaches you, our drafters, correctors, and editors would have spent weeks perfecting every word and every photograph. If you compile a few of our instructions together, you will get a sewing manual that will assist you in sewing all kinds of garments at any difficulty level.

And I would be very happy if these instructions helped you to turn your hobby into a lifelong passion... Enjoy the process! Create your ultimate dream wardrobe! Wear your garments proudly for years to come!

If you have any questions, please contact us at info@vikisews.com - we are always there to help.



NOLA PATTERN DESCRIPTION

Nola is a close-fitting dress with a trapeze silhouette. The front features a yoke gathered on the bottom and finished with a channel for ties on the top. The back has side panels as well as a shirred center panel. The skirt has a slight A-line shape. Nola has a short, voluminous sleeve with gathers along the shoulder and a channel for elastic at the hem. The front and back necklines are quite deep, and the dress is above knee length.



IMPORTANT!

The contents of this pattern are copyright protected and belong exclusively to Vikisews. You may use Vikisews patterns for personal use. It is prohibited to share Vikisews patterns and instructions with third parties, as well as to publish patterns and instructions online for public access. According to part 1 of clause 1252 and clause 1301 of the Civil Code of the Russian Federation, failure to comply with the mentioned rules constitutes a breach of the legislation in force in the field of copyright and entails liability of the violator. Illegal use or distribution will be prosecuted in accordance with legislation.

You may use Vikisews patterns for commercial use, to sew custom-made garments and/or create fashion collections, on the condition that the patterns are solely used in a manufacturing setting and are not further shared with individuals.

TOTAL WEARING EASE

Bust ease, cm	Waistline ease, cm	Hipline ease, cm	Upper arm ease, cm
4,2-5,3	14,2-15,3	13,2-15,9	17,5

GARMENT LENGTH, SLEEVE LENGTH

Height, cm	Length of back from waist down (different for each size), cm	Sleeve length, cm
1 (154-160)	41-41,2	26,9-27,6
2 (162-168)	45-45,1	28-28,6
3 (170-176)	49-49,1	29-29,6
4 (178-184)	53-53,1	30-30,6

SUGGESTED FABRIC

To sew this dress, choose woven fabrics with the following properties:

- Light to medium weight, no stretch or very little stretch, soft with good drape, opaque;
- The fiber content can include natural fibers (silk, cotton), artificial (viscose), blends (cotton + viscose, silk + polyester, etc), and synthetic (polyester, polyester + elastane, etc);
- The following fabrics are recommended: natural or artificial silk, viscose poplin or rayon challis, crepe, lightweight atlas, chiffon.

Attention! We do not recommend stretchy knit materials.

The dress on the model is made with 100% silk. This fabric is lightweight, soft and non-stretchy.

PATTERN PIECES LIST

- 1. From main fabric:**
1. Front skirt – cut 1 on fold
 2. Top front bodice piece – cut 4
 3. Front yoke – cut 1 on fold
 4. Back skirt – cut 1 on fold
 5. Center back bodice – cut 1 on fold
 6. Side back bodice – cut 4
 7. Sleeve – cut 2
 8. Sleeve channel – cut 2
 9. Tie for the channel – cut 2

IMPORTANT!

Don't forget to transfer all pattern markings and notches onto the fabric.

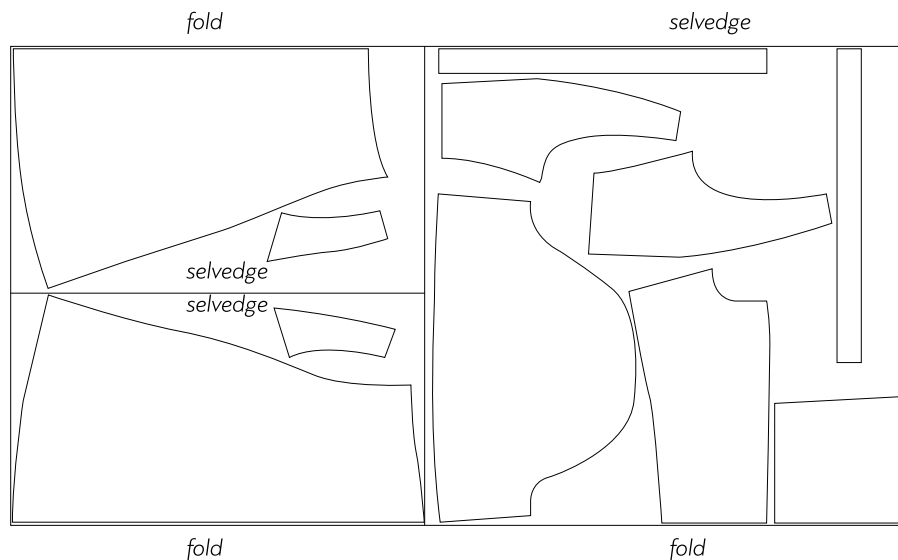
SEAM ALLOWANCES

All pattern pieces include 1 cm seam allowances. Take this into account when laying out pattern pieces on the fabric.

CUTTING LAYOUT

Main fabric, 140cm wide, cut in two parts for sizes 34-36 for all heights, with a directional print

- 1st part – with two folds
- 2nd part – with one fold



Important! In situations where the needle leaves marks in the fabric (leather, suede, nylon, silk, etc.), in order to check the fit and evaluate possible issues, we recommend making a muslin first! In this case, you won't need to do fittings, simply try on the assembled muslin to evaluate the length of garment and sleeves, mark the placement of buttons/snaps. We recommend testing on a scrap piece of fabric first to see whether your chosen material is prone to be marked by needles.

During basting, if it so happens that one piece is longer than the other, don't rush to true them by cutting the excess off or stretch the shorter piece. First make sure that the notches are properly matched, lay the pieces on a flat surface and try to re-baste the pieces together. If the pieces still don't match in length, for example if one stretched or if there was a mistake during cutting, then the truing can be done after the first fitting, during construction of the garment.

After assembly, seams should be lightly pressed flat, then pressed to one side or pressed open.

What to look for during fitting?

The right and left sides of the garment should look the same.

Verify the balance of the garment – the side seams should be vertical, the shoulder seam should lie on the natural slope of the shoulder.

If the hem of the garment is straight, then the hem should hang parallel to the floor. If the hem is curved, then it should be verified against the pattern pieces.

Evaluate the side view of the front and back of the garment (look at yourself sideways in the mirror). The front and back should not sag or be pulled up. The back should not pull across the shoulder blades, the shoulders and underneath the neck.

Evaluate the side seams from the front or back. The sides should not sag or pull up.

Check for fit issues associated with individual features of the body (for example an asymmetrical figure with uneven shoulders, etc.)

Check for garment volume, there should be enough volume and it should feel comfortable.

After the fitting, mark changes symmetrically to both sides of the garment; if needed, baste once more and try on again.



Place the inner top front bodice piece and the inner side back bodice piece right sides together. Align the shoulder edges, pin, baste and stitch on your sewing machine. Start and end with a backstitch.