

FROM THE FOUNDER OF THE #VIKISEWS BRAND

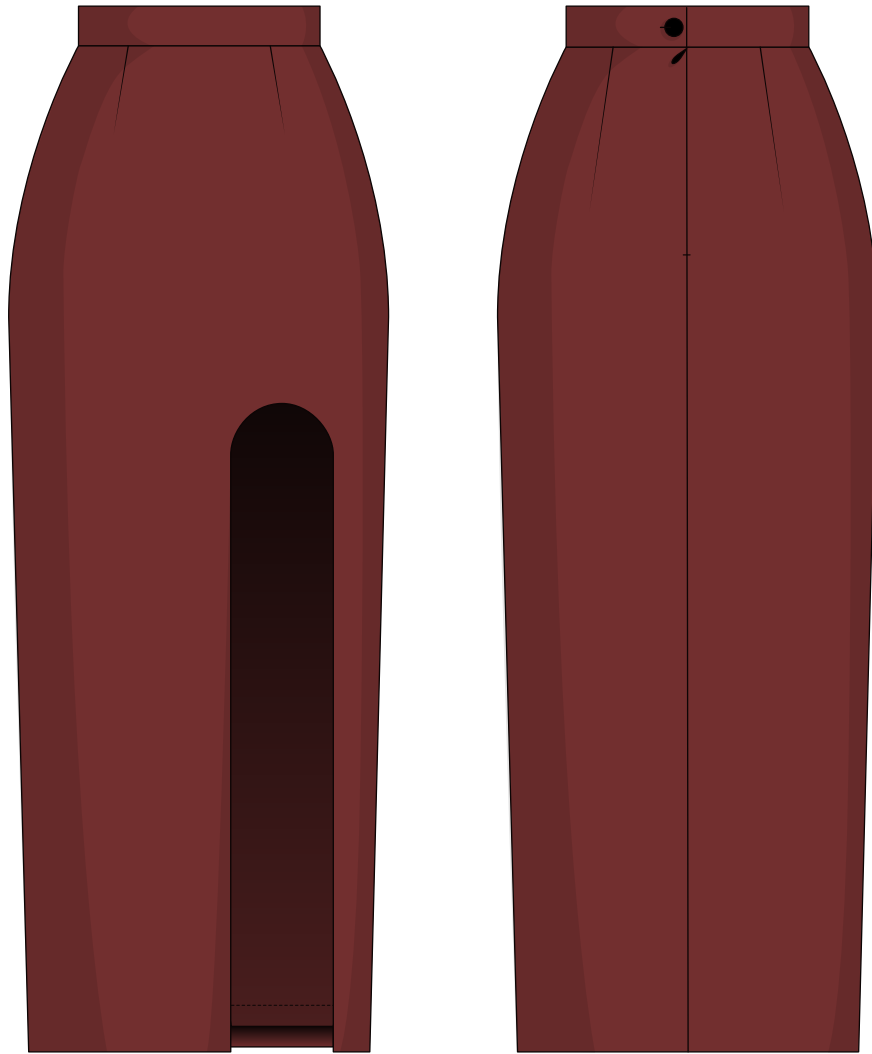


Back in 2016, when I was working on my first set of sewing instructions, I was trying to write them in such a way that even a complete beginner could easily understand and use them to create their very first garment. These instructions laid the foundation for the Vikisews brand, its vision and its mission. I wanted to create modern patterns with the most detailed and clear instructions.

Now, with each new collection we are constantly improving our instructions, amending them and adding more relevant details. By the time the final product reaches you, our drafters, correctors, and editors would have spent weeks perfecting every word and every photograph. If you compile a few of our instructions together, you will get a sewing manual that will assist you in sewing all kinds of garments at any difficulty level.

And I would be very happy if these instructions helped you to turn your hobby into a lifelong passion... Enjoy the process! Create your ultimate dream wardrobe! Wear your garments proudly for years to come!

If you have any questions, please contact us at info@vikisews.com - we are always there to help.



MALIKA PATTERN DESCRIPTION

Malika is a semi-fitted straight skirt. The skirt is shaped with front and back waist darts. The front features a shaped cutout. The skirt closes with an invisible zipper in the center back seam. The applied waistband closes with a button and buttonhole. The skirt is lined. Malika is below-knee length.



IMPORTANT!

The contents of this pattern are copyright protected and belong exclusively to VikiSews. You may use VikiSews patterns for personal use. It is prohibited to share VikiSews patterns and instructions with third parties, as well as to publish patterns and instructions online for public access. According to part 1 of clause 1252 and clause 1301 of the Civil Code of the Russian Federation, failure to comply with the mentioned rules constitutes a breach of the legislation in force in the field of copyright and entails liability of the violator. Illegal use or distribution will be prosecuted in accordance with legislation.

You may use VikiSews patterns for commercial use, to sew custom-made garments and/or create fashion collections, on the condition that the patterns are solely used in a manufacturing setting and are not further shared with individuals.

TOTAL EASE ALLOWANCE

	Waistline ease	Hipline ease
cm	3	4
inches	1 1/8	1 5/8

GARMENT LENGTH

Height, cm	Garment length, cm	Height, ft	Garment length, in
1 (154-160)	83.5	1 (5'1" - 5'3")	32 7/8
2 (162-168)	87.5	2 (5'4" - 5'6")	34 1/2
3 (170-176)	91.5	3 (5'7" - 5'9")	36
4 (178-184)	95.5	4 (5'10" - 6'1")	37 5/8

SUGGESTED FABRIC

To sew this skirt, choose suiting fabrics with the following properties:

- medium-weight, soft, without stretch or with little stretch, opaque
- the fiber content can include natural fibers (wool, cotton), artificial fibers (viscose), blends (wool + silk, wool + polyester, cotton + viscose, etc.), and synthetics (polyester, polyester + elastane)
- the following fabrics are recommended: wool suiting, gabardine, faux leather, suede, silk velvet, fine wale corduroy.

Attention! We do not recommend stretchy knit materials (jersey fabrics) or lightweight sheer fabrics (chiffon, organza, stretch lace).

For the lining, the following fabrics are recommended: lining fabrics made from artificial fibers (viscose), blends (viscose + elastane, viscose + polyester), or synthetics (polyester, polyester + elastane).

The skirt in the photos is made from wool suiting. The fabric is medium-weight, pliable, soft, with little stretch. The fiber content is wool + cotton + polyester. The lining is 100% viscose.

PATTERN PIECES LIST

1. From main fabric:

- front - cut 1
- back - cut 2
- waistband - cut 1

2. From lining fabric:

- front lining - cut 1
- back lining - cut 2

Attention! When cutting, place all pieces on the right side of the fabric.

SEAM ALLOWANCES

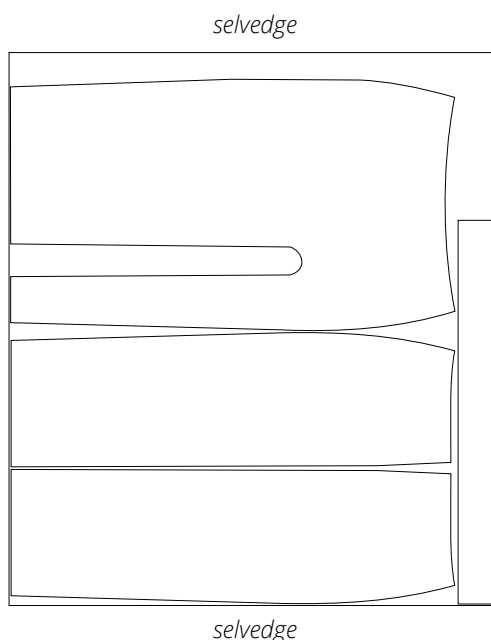
Pattern pieces include the following seam allowances:

- garment hem - 4cm (1 5/8")
- lining hem - 2cm (3/4")
- center back seam - 1,5cm (5/8")
- all other edges - 1cm (3/8")

Take this into account when laying out pattern pieces on the fabric.

CUTTING LAYOUT

Main fabric, 140-150cm (55-60") wide, cut on a single layer,
for all sizes and heights, for directional print or nap



IMPORTANT! Don't forget to transfer all the notches from the pattern to your fabric.

3. From interfacing:

- waistband - cut 1

Also from interfacing, cut 2 strips that are 1,5cm (5/8") wide and 20cm (7 7/8") long. These will be used to interface the zipper area seam allowances.

What to look for during fitting?

The right and left sides of the garment should look identical.

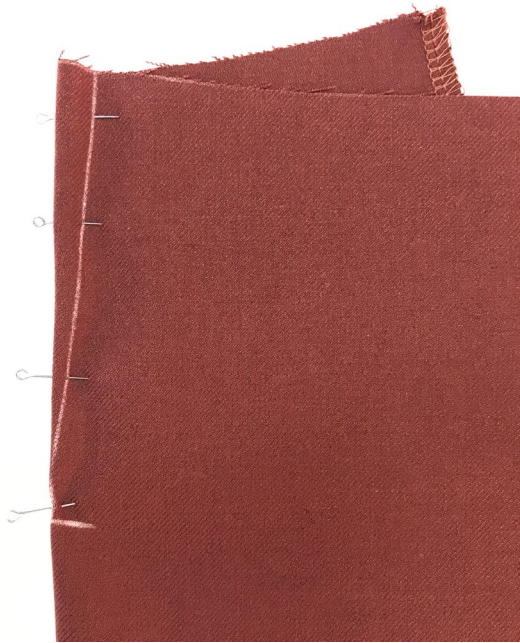
Check the garment balance - side seams should be aligned vertically.

Check for issues that might be caused by unique features of the person's body.

After the fitting, make symmetrical adjustments to both sides of the garment and then do another baste fitting if necessary.



With the right side facing up, overlock the side and center back edges on the front and back skirt pieces.



Working from the wrong side, pin each dart on the front and back skirt pieces.