

# FROM THE FOUNDER OF THE #VIKISEWS BRAND

---

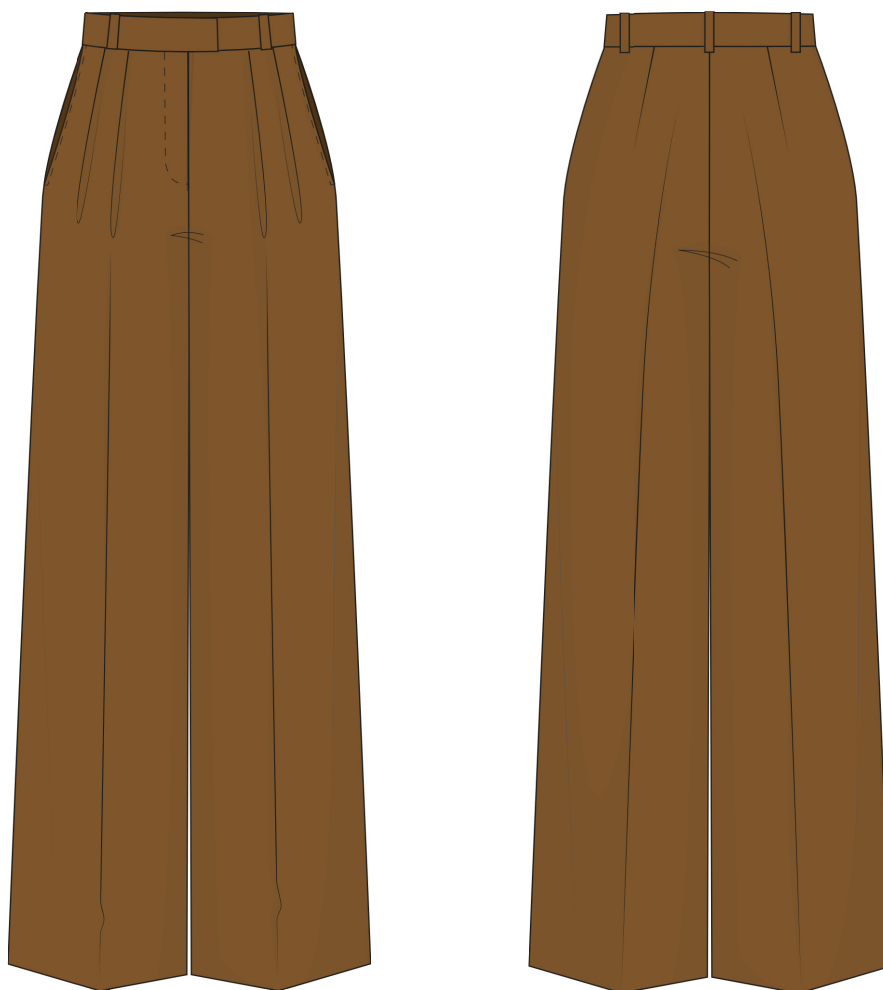


Back in 2016, when I was working on my first set of sewing instructions, I was trying to write them in such a way that even a complete beginner could easily understand and use them to create their very first garment. These instructions laid the foundation for the Vikisews brand, its vision and its mission. I wanted to create modern patterns with the most detailed and clear instructions.

Now, with each new collection we are constantly improving our instructions, amending them and adding more relevant details. By the time the final product reaches you, our drafters, correctors, and editors would have spent weeks perfecting every word and every photograph. If you compile a few of our instructions together, you will get a sewing manual that will assist you in sewing all kinds of garments at any difficulty level.

And I would be very happy if these instructions helped you to turn your hobby into a lifelong passion... Enjoy the process! Create your ultimate dream wardrobe! Wear your garments proudly for years to come!

If you have any questions, please contact us at [info@vikisews.com](mailto:info@vikisews.com) - we are always there to help.



## DAPHNA PATTERN DESCRIPTION

---

Daphna is a pair of loose-fitting, straight-cut palazzo trousers with pressed creaselines on the front and back. At the waist, there are two soft pleats facing the center on each side of the front. The back features waist darts. There are functional pockets in the side seams. The trousers have an applied waistband with belt loops. The upper edge of the waistband sits at the natural waistline. Daphna fastens with a fly front zipper, as well as with a hook-and-bar. The trousers are floor-length.



## IMPORTANT!

---

The contents of this pattern are copyright protected and belong exclusively to VikiSews. You may use VikiSews patterns for personal use. It is prohibited to share VikiSews patterns and instructions with third parties, as well as to publish patterns and instructions online for public access. According to part 1 of clause 1252 and clause 1301 of the Civil Code of the Russian Federation, failure to comply with the mentioned rules constitutes a breach of the legislation in force in the field of copyright and entails liability of the violator. Illegal use or distribution will be prosecuted in accordance with legislation.

You may use VikiSews patterns for commercial use, to sew custom-made garments and/or create fashion collections, on the condition that the patterns are solely used in a manufacturing setting and are not further shared with individuals.

# TOTAL EASE ALLOWANCE

---

	Waistline ease	Hipline ease
cm	5	20.5
inches	2	8 1/8

# GARMENT LENGTH

---

Height, cm	Side seam length including waistband, cm	Height, ft	Side seam length including waistband, in
1 (154–160)	111	1 (5'1"–5'3")	43 3/4
2 (162–168)	115	2 (5'4"–5'6")	45 1/4
3 (170–176)	119	3 (5'7"–5'9")	46 7/8
4 (178–184)	123	4 (5'10"–6'1")	48 3/8

# SUGGESTED FABRIC

---

To sew these trousers, choose suiting fabrics with the following properties:

- medium-weight, pliable, breathable, non-stretch or low-stretch, opaque
- the fabric content can include natural (wool, silk, cotton, linen), artificial (viscose), blends (wool + silk, wool + polyester, cotton + viscose, etc.), and synthetic fibers (polyester, polyester + elastane)
- the following fabrics are recommended: wool suiting, gabardine, denim, tweed, corduroy, linen, twill, wool crepe.

We do not recommend very stretchy knit materials (jersey fabric) and lightweight sheer fabrics (chiffon, organza, stretch lace).

For the lining choose lining fabric which includes artificial (viscose), blends (viscose + elastane, viscose + polyester, etc.), and synthetic fibers (polyester, polyester + elastane).

The trousers in the photo are made of suiting fabric. This fabric is medium-weight, pliable, soft, and has little stretch. The fiber content is a blend of polyester, viscose and spandex. The lining is viscose + polyester.

4. One trouser zipper, 20 cm (8") long, for all sizes in all heights
5. One button, 1.5–2 cm (5/8–3/4") in diameter
6. One pair of hook-and-bar fastener
7. Matching thread, 5 spools (1 spool for the sewing machine and 4 spools for the overlocker)

## TOOLS AND EQUIPMENT

---

- sewing machine for construction
- overlocker for finishing raw edges. It may be replaced with a stretch overlock stitch or a zigzag stitch on the sewing machine (overlock or zigzag stitch width 2–3 mm, stitch length 2.5 mm)
- buttonhole foot for the sewing machine
- stitch-in-the-ditch foot for the sewing machine (optional).

## PATTERN PIECES LIST

---

### 1. From main fabric:

- front leg - cut 2
- back leg - cut 2
- pocket bag - cut 2 (to be attached to the pocket opening on the back leg)
- belt - cut 1
- fly shield - cut 1 on fold
- belt loops - cut 1.

### 2. From lining fabric:

- pocket bag - cut 2 (to be attached to the pocket opening on the front leg).

### 3. From interfacing:

- fly extension - cut 1
- belt - cut 1.

***IMPORTANT!** Don't forget to transfer all pattern markings and notches onto the fabric.*

Also, to interface the pocket opening, cut 2 strips of interfacing that are 1.5 cm (5/8") wide and as long as the pocket opening (to be measured on the pattern piece), plus an additional 3 cm (1 1/8"). The grainline of the interfacing should be parallel to the longer side of the strip (along the selvedge of the interfacing).

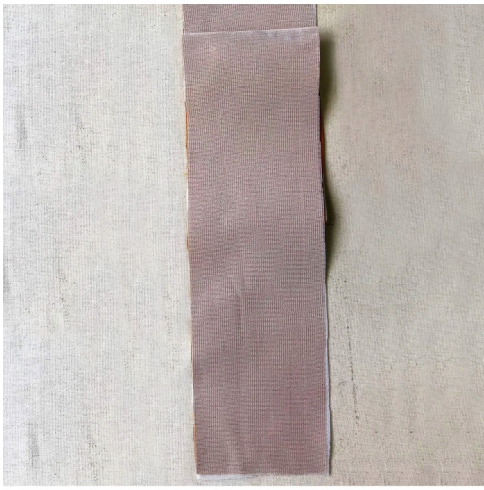
## SEAM ALLOWANCES

---

All pattern pieces include seam allowances as follows:

- hem allowance - 4 cm (3 1/8")
- all other seams - 1 cm (3/8").

Take this into account when laying out pattern pieces on the fabric.



Fully interface the waistband piece.

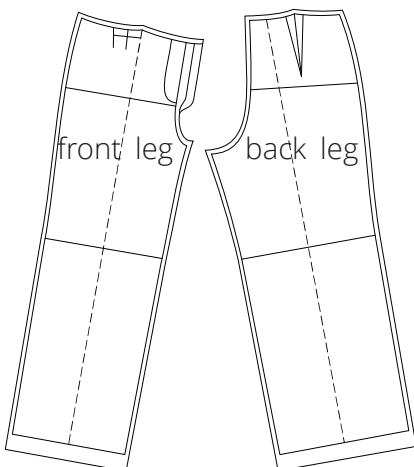
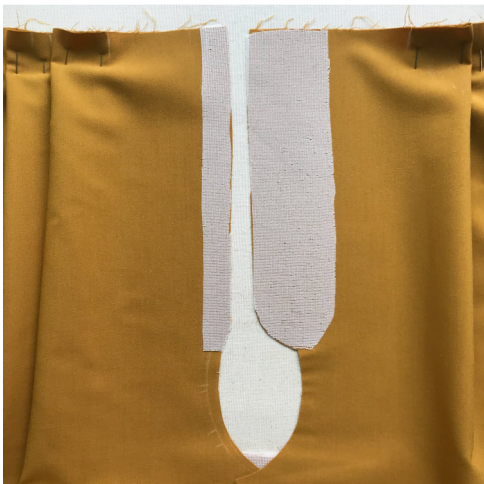
Partially interface the following pieces:

- the pocket opening seam allowances. To do so, cut strips of interfacing that are 1.5 cm (5/8") wide and as long as the segment to be interfaced. The grainline of the interfacing should be parallel to the longer side of the strip (along the selvedge of the interfacing).
- the seam allowance edge for finishing the fly on the left-leg front piece.
- the fly extension on the right-leg front piece.

To interface, put the gluey side of the interfacing (the side that feels rough to the touch) on top of the wrong side of the fabric piece (or a section thereof) and press with the iron.



Do not iron the piece, but instead press it section by section, holding it down with the iron a few seconds until that section is adhered and then pressing down the next section. You may use a cotton pressing cloth to protect your iron sole. Once the interfacing process is complete, leave the piece on a hard, flat surface for 15 minutes for it to cool down.



Trace baste along the markings on the front and back leg pieces to mark the creaselines, as well as the center front line in the fly extension area.

Use light-colored thread to avoid color transfer when steam pressing the fabric.

Press the creaselines on the front and back leg pieces.