

FROM THE FOUNDER OF THE #VIKISEWS BRAND

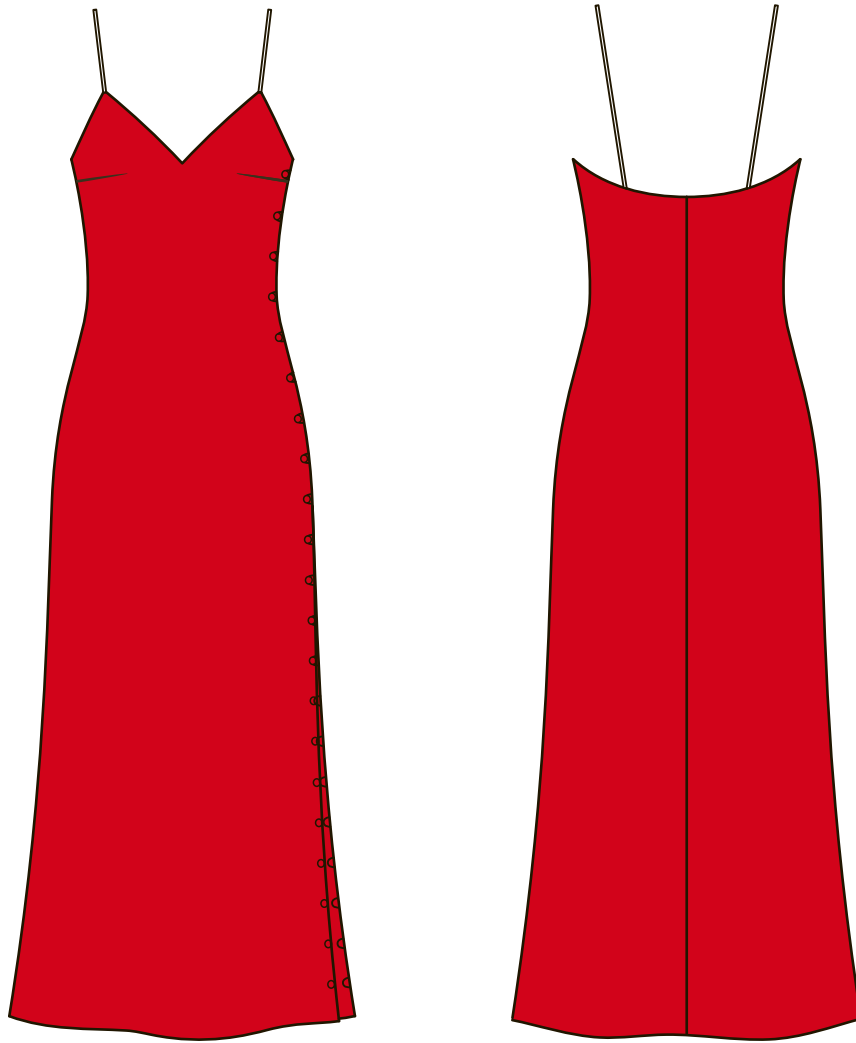


Back in 2016, when I was working on my first set of sewing instructions, I was trying to write them in such a way that even a complete beginner could easily understand and use them to create their very first garment. These instructions laid the foundation for the Vikisews brand, its vision and its mission. I wanted to create modern patterns with the utmost detailed and clear instructions.

Now, with each new collection we are constantly improving our instructions, amending them and adding more relevant details. By the time the final product reaches you, our drafters, correctors, and editors would have spent weeks perfecting every word and every photograph. If you compile a few of our instructions together, you will get a sewing manual that will assist you in sewing all kinds of garments at any difficulty level.

And I would be very happy if these instructions helped you to turn your hobby into a lifelong passion... Enjoy the process! Create your ultimate dream wardrobe! Wear your garments proudly for years to come!

If you have any questions, please contact us at info@vikisews.com - we are always there to help.



LACEY PATTERN DESCRIPTION

Lacey is a close-fitting slip dress with an accentuated waist. The dress is bias-cut and is additionally fitted with a center back seam. There are bust darts on the front. The dress is self-lined, sleeveless, and has spaghetti straps. There are decorative buttons and button loops along the entire length of the left side seam. The left side seam ends in a slit that's also trimmed with buttons and button loops that can be used to adjust the height of the slit. Lacey is midi length.



IMPORTANT!

The contents of this pattern are copyright protected and belong exclusively to VikiSews. You may use VikiSews patterns for personal use. It is prohibited to share VikiSews patterns and instructions with third parties, as well as to publish patterns and instructions online for public access. According to part 1 of clause 1252 and clause 1301 of the Civil Code of the Russian Federation, failure to comply with the mentioned rules constitutes a breach of the legislation in force in the field of copyright and entails liability of the violator. Illegal use or distribution will be prosecuted in accordance with legislation.

You may use VikiSews patterns for commercial use, to sew custom-made garments and/or create fashion collections, on the condition that the patterns are solely used in a manufacturing setting and are not further shared with individuals.

TOTAL EASE ALLOWANCE

The garment is bias-cut, so the ease measurements are estimated.

	Bust ease	Waistline ease	Hipline ease
cm	1.1–1.6	11	8
inches	3/8–5/8	4 3/8	3 1/8

GARMENT LENGTH

Height, cm	Garment length at center back, cm	Height, ft	Garment length at center back, in
1 (154–160)	78.6–82.3	1 (5'1"–5'3")	31–32 3/8
2 (162–168)	81.6–85.3	2 (5'4"–5'6")	32 1/8–33 5/8
3 (170–176)	84.6–88.3	3 (5'7"–5'9")	33 1/4–34 3/4
4 (178–184)	87.7–91.4	4 (5'10"–6'1")	34 1/2–36

SUGGESTED FABRIC

To sew this dress, choose dress-weight fabrics with the following properties:

- medium-weight, pliable, breathable, soft, non-stretch or low-stretch, opaque
- the fiber content can include natural fibers (silk), artificial fibers (viscose), blends (silk + polyester, polyester + viscose, etc.), and synthetics (polyester, polyester + elastane)
- the following fabrics are recommended: silk, artificial silk, dress-weight viscose, charmeuse.

Attention! We do not recommend stretchy knit materials (jersey fabrics), or lightweight sheer fabrics (chiffon, organza, stretch lace).

We recommend using the same fabric for the lining. This is very important for bias-cut garments. Even the slightest difference in the properties of the outer fabric and lining can cause distortion in the final garment.

The dress in the photos is made of charmeuse. The fabric is medium-weight, pliable, soft, non-stretch. The fabric content is 100% polyester.

PATTERN PIECES LIST

1. From main fabric:

- front – cut 1 + 1 lining
- back – cut 2 + 2 lining
- strap – cut 2
- rouleau loop – cut 1

IMPORTANT! Don't forget to transfer all the notches from the pattern to your fabric. This is especially important for a bias-cut garment.

SEAM ALLOWANCES

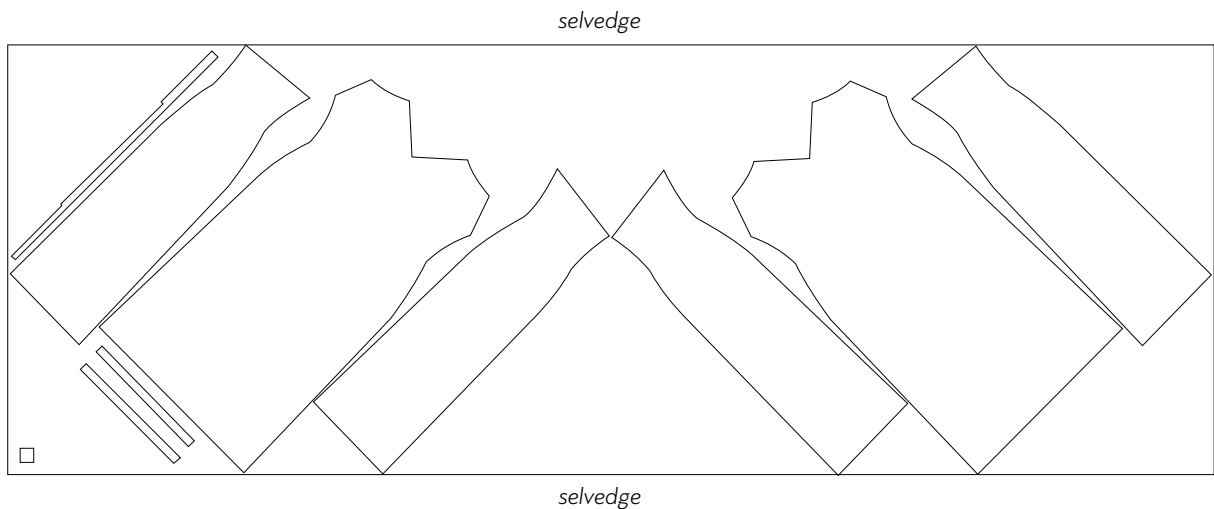
Pattern pieces include the following seam allowances:

- all edges – 1cm (3/8")

Take this into account when laying out pattern pieces on the fabric.

CUTTING LAYOUT

Main fabric, 140cm (55") wide, cut on a single layer, for all sizes in all heights, without print or nap direction



READY? LET'S GET SEWING!

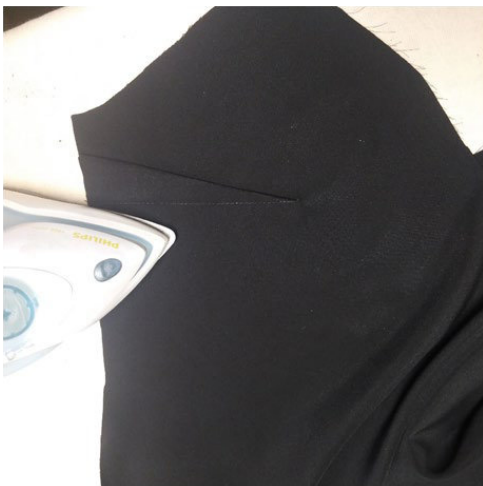


Following the markings, pin the darts on the wrong side of the outer front piece. Baste if necessary. Machine-stitch the darts, starting from the base of the dart and continuing toward the dart point. Backstitch at the beginning of the seam. At the tip of the dart, tie the thread ends into knots and hide them inside the seam allowance using a large-eye needle.

Stitch the darts on the lining front piece the same way.



Press the dart flat.



Press the dart up. Shrink out the fullness at the dart point.