

FROM THE FOUNDER OF THE #VIKISEWS BRAND



Back in 2016, when I was working on my first set of sewing instructions, I was trying to write them in such a way that even a complete beginner could easily understand and use them to create their very first garment. These instructions laid the foundation for the Vikisews brand, its vision and its mission. I wanted to create modern patterns with the most detailed and clear instructions.

Now, with each new collection we are constantly improving our instructions, amending them and adding more relevant details. By the time the final product reaches you, our drafters, correctors, and editors would have spent weeks perfecting every word and every photograph. If you compile a few of our instructions together, you will get a sewing manual that will assist you in sewing all kinds of garments at any difficulty level.

And I would be very happy if these instructions helped you to turn your hobby into a lifelong passion... Enjoy the process! Create your ultimate dream wardrobe! Wear your garments proudly for years to come!

If you have any questions, please contact us at info@vikisews.com - we are always there to help.



NIKKI PATTERN DESCRIPTION

Nikki is a straight cropped semi-fitted sweatshirt. It features long drop-shoulder sleeves that are sewn in flat. The neckline is round and finished with a neckband made from ribbing. The sweatshirt is topstitched along the shoulder seams, armhole seams, bottom hem and sleeve hems. Nikki is below waist length.



IMPORTANT!

The contents of this pattern are copyright protected and belong exclusively to VikiSews. You may use VikiSews patterns for personal use. It is prohibited to share VikiSews patterns and instructions with third parties, as well as to publish patterns and instructions online for public access. According to part 1 of clause 1252 and clause 1301 of the Civil Code of the Russian Federation, failure to comply with the mentioned rules constitutes a breach of the legislation in force in the field of copyright and entails liability of the violator. Illegal use or distribution will be prosecuted in accordance with legislation.

You may use VikiSews patterns for commercial use, to sew custom-made garments and/or create fashion collections, on the condition that the patterns are solely used in a manufacturing setting and are not further shared with individuals.

TOTAL EASE ALLOWANCE

Bust ease, cm	Waistline ease, cm	Hipline ease, cm	Upper arm ease, cm
28.8-34.8	46.9-52.7	18.3-24.3	20-24

GARMENT LENGTH, SLEEVE LENGTH

Height, cm	Garment length at center back, cm	Sleeve length including shoulder width, cm
1 (154-160)	54.5	71.7-73.5
2 (162-168)	57.5	73.7-75.5
3 (170-176)	60.5	75.7-77.4
4 (178-184)	63.5	77.7-79.4

SUGGESTED FABRIC

To sew this sweatshirt, choose knit fabrics with the following properties:

- soft, breathable, non-stretch or with little stretch, medium weight
- the fiber content can include natural fibers (wool, cotton), artificial (viscose), blends (wool + polyester, cotton + polyester, cotton + elastane, etc.) and synthetics (polyester, polyester + elastane)
- the following fabrics are recommended: sweatshirt fleece, thick French terry

Attention! We do not recommend lightweight sheer fabrics (chiffon, organza, stretch lace).

Additionally, we recommend using rib knit material for the neckband.

The sweatshirt in the photos is made from sweatshirt fleece. The fabric is soft, durable, with little stretch. The fiber content is 50% cotton and 50% polyester. The neckband is made from ribbing.

PATTERN PIECES LIST

1. From main fabric:

- Front - cut 1 on fold
- Back - cut 1 on fold
- Sleeve - cut 2

2. From additional material:

- Neckband - cut 1

IMPORTANT! Don't forget to transfer all the notches from the pattern to your fabric.

SEAM ALLOWANCES

Pattern pieces include the following seam allowances:

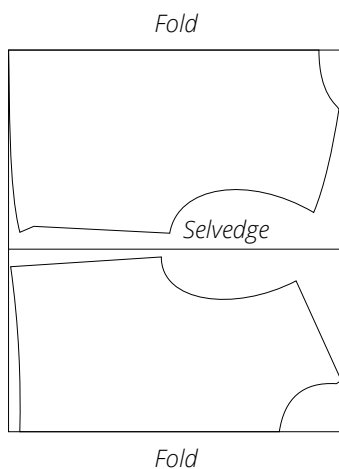
- All edges - 1cm

Take this into account when laying out pattern pieces on the fabric.

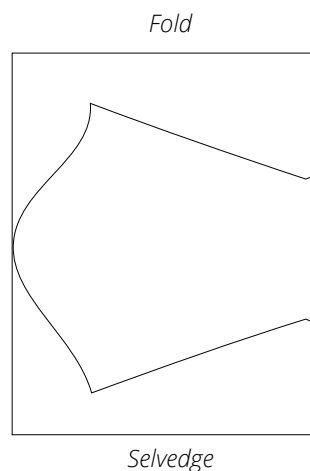
CUTTING LAYOUT

Main fabric, 160cm wide, for all sizes and heights,
for a non-directional print or without nap

1st part with two folds



2nd part on fold





Press the seams. First, press the seams flat.



Press the seam allowance towards the front with the help of a tailor's roll.



Topstitch the shoulder seams using a flatlock stitch. If you are using a coverlock machine, stitch from the right side of the garment. If you are using a coverstitch machine, stitch from the wrong side of the garment. The sample in the photos was topstitched from the wrong side on a coverstitch machine. The topstitching was done on top of the seam allowance, with the left needle positioned over the back of the sweatshirt, and the middle and right needles positioned over the front. The photo shows how the seam looks from the right side. Press the seam.